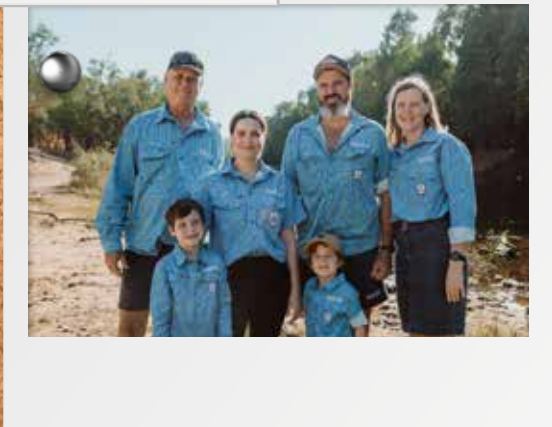
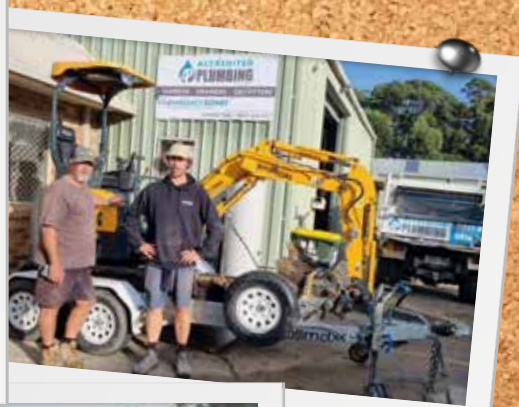


plumbers choice

TRADE
ONLY



Multiple generations of plumbers supporting Trade Only



489 Mountain Highway, Bayswater, VIC 3153
Email: info@plumberschoice.com.au • Ph: (03) 9720 8274

www.plumberschoice.com.au



Luke's Editorial



We have been around for 27 years and a new generation of Plumbers is supporting Trade Only.

Plumbers Choice has been around for over 27 years now. That's 27 years of Trade Only. We have seen many changes over the years within our industry.

We've seen the evolution of plumbing products, soldering transition to press, the old fashioned paper diaries disappearing with the emergence of phones and iPads, but the thing that pulls on the heart strings the most is the changing of the guard to future generations. We have seen many businesses come and go, many Plumbers retire but we love to see when it stays in the family. We've been lucky enough to deal with many plumbers who have followed in their father's footsteps, some have even continued the legacy for 3 generations and all have supported Trade Only.

So this Edition's cover is dedicated to all those multi-generations plumbing companies who have passed down their business but also passed on the Trade Only legacy! You are all changing an industry for the better!

LUKE BOLTON
DIRECTOR, PLUMBERS CHOICE



Unfortunately one of our loyal Trade Only supporters Peter from Peters Plumbing Service was forced to retire early and hand over his business to his sons due to a MND diagnosis. If you know of anyone living with MND or just want to donate to help find a cure. Head to fightmnd.org.au

HOW TO ORDER



Online - 24 hours
www.plumberschoice.com.au



Email - 24 hours
sales@plumberschoice.com.au



Phone - Business Hours
(03) 9720 8274
Our knowledgeable staff will take your order.



At our Trade Outlets
Monday - Friday
489 Mountain Highway, Bayswater, VIC 3153
4/200 Woodpark Road, Smithfield, NSW 2164



Personal Sales Rep
Your personal Sales Representative is able to tailor our service to suit your needs.



Shop Trade Only from the palm of your hand!

PEX PIPE BAG

NO MORE WRESTLING WITH COILS



HEAVY DUTY ZIP



STURDY CARRY HANDLE

NO MORE MESSY TANGLED COILS ONSITE OR IN THE UTE

- Protects coils from UV damage
- Made from Rip Stop Vinyl
- Protects pipe from cuts and abrasions

DESIGNED & TESTED BY AUSTRALIAN PLUMBERS

SUITS COIL UP TO
• 16mm X 100m
• 20mm X 50m



Innovative tools for PLUMBERS

JAY TYPE

TIMBER SCREW

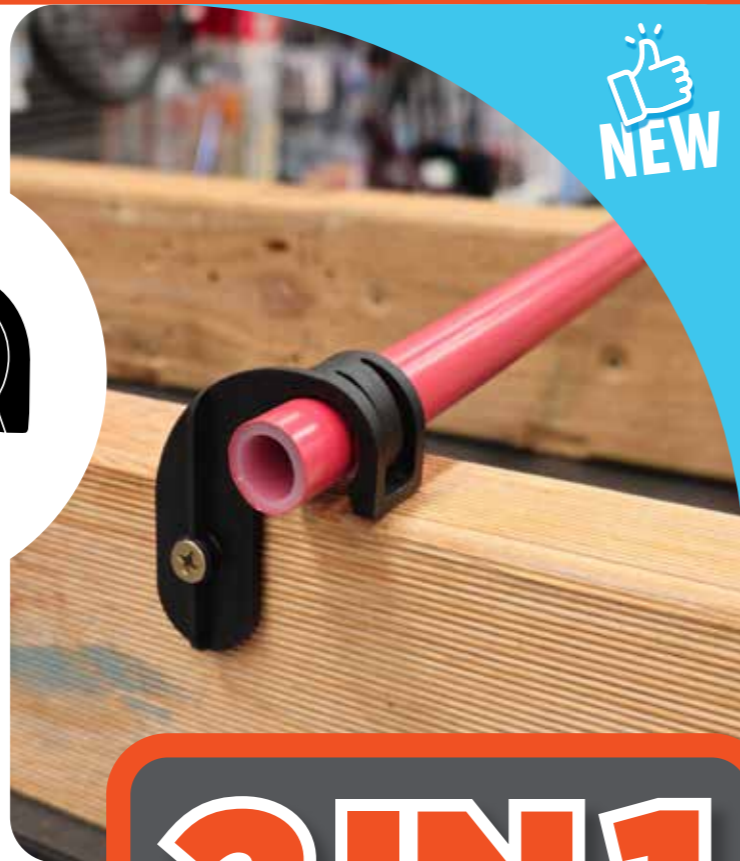
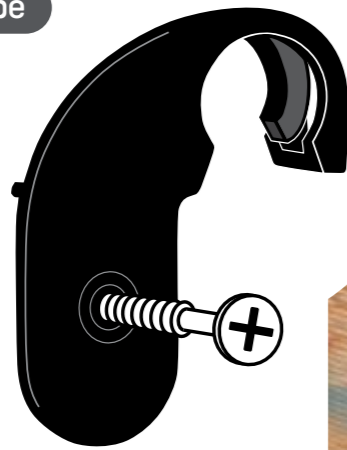
For 16-20mm Pex Pipe

- Saves time and money by only having to stock one clip
- Use on trusses and under bearers
- The original Kody design

PATENTED

BAG QTY
25

16 - 20mm | Code: 5588 **\$13.48**



DUALPEX

AQUARIUS
DISTRIBUTION

2IN1

ONE CLIP FITS TWO PIPE SIZES!

STUD CLIP

HEX SD SCREW

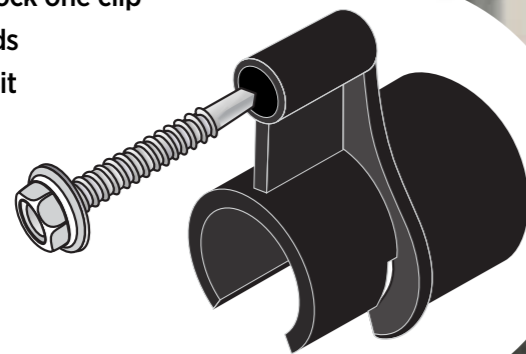
For 16-20mm Pex Pipe

- Saves time and money by only having to stock one clip
- Use on Steel Studs
- 1/4" Hex Driver Bit included in bag

PATENTED

BAG QTY
100

16 - 20mm | Code: 5569 **\$42.36**



FREE
DRIVER
BIT

Receive a **FREE**
1/4 INCH MAGNETIC
NUT SETTER with
every Hex Head bag



BULK SPECIAL

PICK YOUR BONUS!



PURCHASE ANY BOX OF PEX CLIPS & RECEIVE...

GET YOUR **BONUS**
PVC PIPE SAW 500mm
plumtool™



VALUED AT \$70.33

GET YOUR **BONUS**
RAPID BORE BIT 25mm
plumtool™



VALUED AT \$40.51

OR

VALID UNTIL 30TH JUNE 2024

PEX CLIPS

PEX SADDLES NYLON ANCHOR MASONRY NAIL

BAG QTY
100

- Strong Concrete nail included

16mm Code: 7898 20mm Code: 7899 25mm Code: 7897

\$32.92 **\$34.08** **\$44.97**



DUALPEX SADDLES NYLON ANCHOR MASONRY NAIL

- Clips onto the pipe and stays in position until fastening is driven in

16 - 20mm | Code: 7896

\$41.11 BAG QTY
100



PEX SADDLES TIMBER SCREW

BAG QTY
100

- Suits Timber
- For Pex with Bugle Screw

16mm Code: 4524 20mm Code: 4525

\$30.54 **\$32.14**



DUALPEX PEX SADDLES TIMBER SCREW

- Clips onto the pipe and stays in position until fastening is driven in

16 - 20mm | Code: 5568

\$39.56 BAG QTY
100



IMPACT DRILL COMPATIBLE ONLY ONE ON THE MARKET



BOX
500



INCLUDES
FREE
DRIVER BIT
IN EVERY BOX

25mm x 8g CL2
Code: 2105 \$51.89

**HEX HEAD
SELF
DRILLING**

PEX SADDLES HEX HEAD SD SCREW

BAG QTY
100

16mm
Code: 9075

\$35.49



20mm
Code: 9076

\$36.43



Suits
Metal
Frame

DUALPEX PEX SADDLES HEX HEAD SD SCREW

Suits
Metal
Frame

16 - 20mm
Code: 5577

\$39.88



16 - 20mm
Code: 5578

\$42.70

with
tab

FREE



Every bag comes with a **FREE**
1/4 INCH MAGNETIC NUT SETTER

Pick your flavour!

1/2 inch BSP cover plates to suit every appetite

1/2" FAVES



NEW

1/2" FLAT CHROME

- Solid stainless steel
- Chrome plated
- 22mm hole
- 67mm OD

67mm

Flat 1/2" BSP
Pack Qty 50 Code 9154

67mm

10mm Rise 1/2" BSP
Pack Qty 50 Code 9153

72mm

16mm Rise 1/2" BSP
Pack Qty 10 Code 1652

72mm

22mm Rise 1/2" BSP
Pack Qty 10 Code 1653

White Plastic 1/2" BSP
Pack Qty 50 Code 1775

Flat 1/2" BSP
Pack Qty 1 Code 4018

10mm Rise 1/2" BSP
Pack Qty 1 Code 4015

Rough Brass 1/2" BSP
Pack Qty 10 Code 4001

65mm

34mm Rise 1/2" BSP
Pack Qty 10 Code 1649

70mm

Flat Square 1/2" BSP
Pack Qty 10 Code 4011

STAINLESS STEEL

70mm

10mm Rise Square 1/2" BSP
Pack Qty 2 Code 4010

CHROME PLATED ABS PLASTIC

White Metal 1/2" BSP 10mm Rise
Pack Qty 1 Code 4013

White Plastic 1/2" BSP Flat Adhesive
Pack Qty 10 Code 4909

Square Flat 1/2" BSP
Pack Qty 1 Code 4025

Square Rise 1/2" BSP 10mm
Pack Qty 1 Code 4026

Rough Brass 1/2" BSP for Corrugated
Pack Qty 1 Code 4005

COVER PLATE LABELS

- Suit any 1/2", 5/8" or 3/4" Centre Cover Plate
- Self Adhesive
- UV Stable
- Can be retrofitted

per 10



48mm

'Rainwater'
White on Green
CODE: 4901



48mm

'Rainwater'
Green on Clear
CODE: 4902



48mm

'Rainwater Do Not Drink'
Green on Clear
CODE: 4903



48mm

'Recycled Water Do Not Drink'
White on Lilac
CODE: 4904

STAINLESS PRINTED COVER PLATES

- UV Stable

per 1



67mm

'Rainwater'
White on Green
CODE: 4905



67mm

'Rainwater'
Green on Clear
CODE: 4907



67mm

'Recycled Water Do Not Drink'
White on Lilac
CODE: 4906

WHITE PRINTED COVER PLATES

per 10



73mm

'Recycled Water Do Not Drink'
Lilac on White
CODE: 1579



73mm

'Rainwater'
Green on White
CODE: 8562

"For the professional plumber"

DISHWASHER COVER PLATES

- Leave a neat finish in the cupboard
- Keeps pests out
- Fits over the solenoid valve

Code: 1792

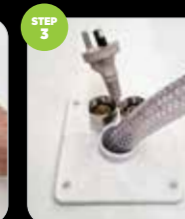
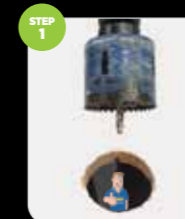


MULTI PURPOSE COVER PLATE

Suitable for Washing Machines & Dishwashers

- Leave a neat finish in the cupboard
- Covers a hole in the cupboard up to 120mm x 115mm
- Keeps pests out
- Fits hot & cold hoses, power cord, Optional outlet hose cap

Code: 1796





**F+F
NOW
AVAILABLE**



EXTENDO
GAS CONNECTOR



✓ Saves Space, **ONE** Connector does it all!

✓ Flame resistant stainless steel

✓ 12mm internal bore for better gas flow

✓ AGA Approved 8633G

✓ 1/2" M+F

✓ 1/2" F+F



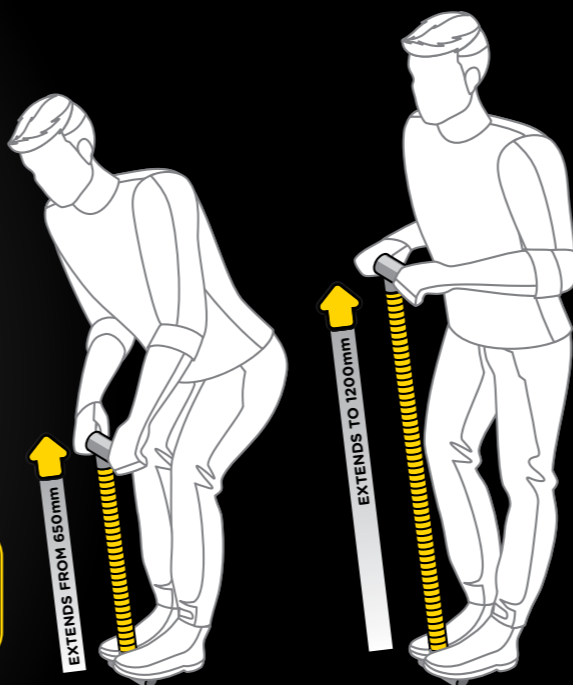
Extendable from **650mm** — TO — **1200mm**

M+F Code: 6176
F+F Code: 6178

**BOX
10**



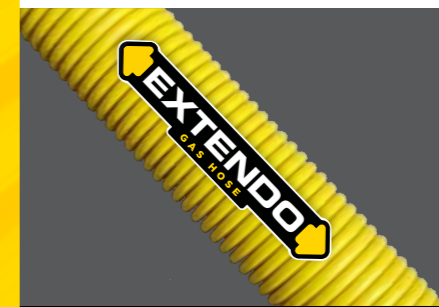
HANDY TIP:
Attach brass tee to either end to create a handle



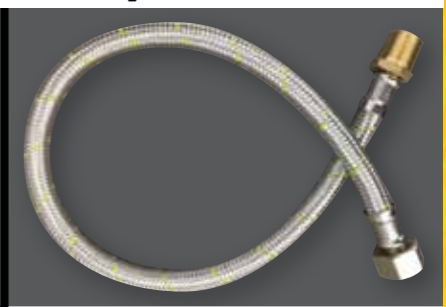
New Extendo

Traditional

Extendability



Extendable

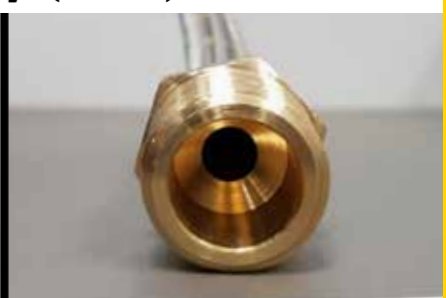


Fixed length

Capacity (Flow)



3.5 times the capacity of traditional gas hoses



Reduced internal bore, restricting gas flow

Flame Resistance



Superior flame & heat resistance



Rubber core is easily ignited

STEEL STUDWORK?

plumbers choice HAS THE ANSWERS!



\$599³⁷
INC. GST
Code: 1914

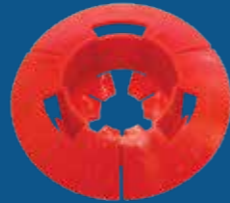
STUD PUNCH

- For the plumber in a hurry!
- Designed for cutting holes in steel stud work
- Cuts holes super fast



\$427⁴
INC. GST
Code: 9241

BAG 100



MULTI-FIT GROMMET

Works in varying thicknesses of studwork (thickness 0.42mm to 2mm)
Complies to Australian Standards AS3500.12 Clause 5.5 2.2 Part C



34MM AND 58MM

STEEL STUD DRILL

- Also great in roofing work for overflows, etc
- 34mm to suit yellow grommets
- 58mm for drainage vents



34mm
\$70⁵⁵
INC. GST
Code: 2000

58mm
\$152⁰⁹
INC. GST
Code: 2001



16MM TO 20MM

STUD CLIP WITH HEX SD SCREW

- Saves time and money by only having to stock one clip
- Use on Steel Studs
- 1/4" Hex Driver Bit included in bag

PATENTED

16mm - 20mm
\$42³⁶
INC. GST
Code: 5569

BAG 100



FREE



Every bag comes with a **FREE** 1/4 INCH MAGNETIC NUT SETTER

FREE

BAG QTY 100

\$35.49

PEX SADDLES
HEX HEAD SD SCREW

16mm | Code: 9075



FREE

BAG QTY 100

\$36.43

PEX SADDLES
HEX HEAD SD SCREW

20mm | Code: 9076



FREE

BAG QTY 100

\$39.88

DUALPEX
HEX HEAD SD SCREW

16mm - 20mm | Code: 5577



FREE

BAG QTY 100

\$42.70

DUALPEX W/TAB
HEX HEAD SD SCREW

16mm to 20mm | Code: 5578



with tab



ONE CLIP FITS 16MM - 20MM PEX PIPE

BAG 100

\$38³⁴
INC. GST
Code: 5558

DUALPEX CLIP
SD SCREW



BAG 100

\$41¹¹
INC. GST
Code: 5575

DUALPEX CLIP
SD SCREW WITH TAB

With Tab

BOX 500



INCLUDES **FREE**

DRIVER BIT IN EVERY BOX

25mm x 8g CL2
Code: 2105 **\$51.89**

HEX HEAD
SELF
DRILLING

PRELOADED

WITH HEX SD SCREWS
Code: 1471



UNLOADED

Code: 1450



MINI PRELOADED

WITH BUGLE SCREWS
Code: 1474



FASTANOG

- Faster than timber noggins
- Compulsory in termite areas
- Set back measurer



SLIDE TO ADJUST LENGTH

preloaded
set back measurer



plumtool™
HEX BIT HOLDER
with Carabiner

Keep all your Hex Bit Drives handy and in reach

- Quick release
- Suitable for all 1/4 Hex Shank bits
- Aluminium alloy construction
- x 5 Clips and carabiner included

\$22.00

CODE: 6101



CLICK IN!
CLICK OUT!
QUICK RELEASE



TRUSTED BRAND

ROOF & GUTTER SILICONE



- Bostik Quality
- Ideal for sealing sheet metal, roofing & guttering
- Potable water approved AS4020-1999
- Neutral Cure
- Non-Corrosive

GREY
300ml



Code: 9953

BOX 20

BLACK
300ml



Code: 9812

BOX 20

TRANSLUCENT
300ml



Code: 9926

BOX 20

**DRILLS FASTER
LASTS LONGER**

\$40.93

10 PACK

CODE: 9687

plumtool™
**DOUBLE ENDED
DRILL BITS**

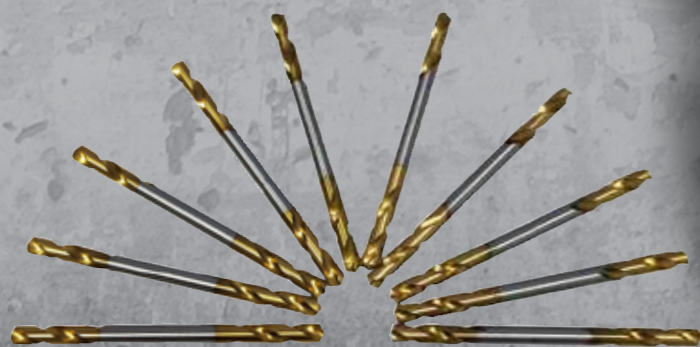
Drill won't ever slip or run off again

- Number 30 Double Ended Panel Drill Bits
- Comes with FREE Click Adaptor
- To Suit 1/8" rivets

FREE BONUS



CLICK ADAPTOR



Innovative tools for **PLUMBERS**

SILICONE - XTREME



- UV resistant, absorbs acoustic and mechanical vibrations
- Highly flexible with up to 400% elongation
- Sticks and seals all common building materials, even in the wet
- Contains zero solvents and is non-bubbling
- +/-25% cyclic expansion and low VOC
- Interior and exterior use

GREY
290ml



Code: 8225

BOX 12

WHITE
290ml



Code: 9845

BOX 12

BLACK
290ml



Code: 8226

BOX 12



BOSTIKTRADE



BOSTIKTRADE



BOSTIKAUSTRALIA

bostik.com

BULK SPECIAL

TEFLON BOXES

100 Rolls

\$110

CODE 9011

THREAD TAPE
PINK

100 Rolls

\$137.50

CODE 9010

THREAD TAPE
YELLOW

200 Rolls

\$137.50

CODE 9012

THREAD TAPE
WHITE

RED BACK

100 Rolls

\$165

CODE 1546

THREAD TAPE
GREY

RED BACK



PRICES INC. GST

Valid until 30th June 2024

RED BACK PLUMBERS' TUBE-PASTE

CODE: 1843

150g



RATED TO 1600 kPa WHEN USED IN CONJUNCTION WITH HEMP, TEFLON OR ON FLARED FITTINGS

- Does not set hard
- Non-toxic & odourless
- Heat rating from -20C to 95C
- Environmentally friendly/non-flammable
- Approved for use on drinking water, NG, LPG, TG & TLPG



Quick tighten & release

Adjustable jaw replaces the need for multiple spanners

- Smooth jaws prevent damage to plated finishes
- Quick adjustment button
- Increased grip from parallel jaws

CODE: 2608

250mm

\$126.50 INC. GST

plumtool™

Innovative tools for PLUMBERS



PLUMTOOL

RATCHETING FLAT JAW PLIERS



Slimline jaws are great for tight spots!

GULLY GRABBER

The Gully Grabber is designed to remove hazards and blockages safely

- Extends up to 2 metres
- Stores in a handy 600mm tube
- Genuine Plumtool
- Patented

CODE: 2610

Extends up to 2m

Up to 2m

\$278.26 INC. GST



LEVEL GRADIENT ADJUSTABLE

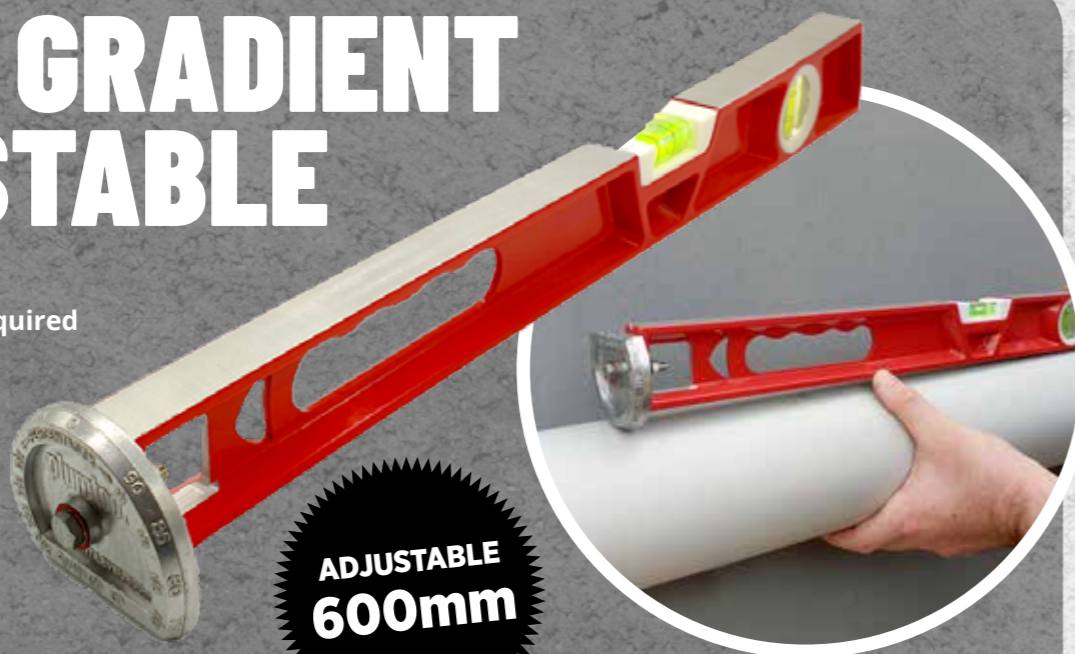
- Great drainers' tool
- Set dial to gradient required
- As used by plumbing inspectors
- Can also be used as a standard level

CODE: 2493

600mm

\$205.61 INC. GST

ADJUSTABLE 600mm



plumtool™

Innovative tools for PLUMBERS

COPPER & BRASS LARGE PRESS FITTINGS

32-50mm

ALWAYS IN STOCK



PRESS GAS FITTINGS

CODE	SIZE
Press Gas Coupling	
7952	Press Gas Coupling 32mm
7953	Press Gas Coupling 40mm
7954	Press Gas Coupling 50mm
Press Gas Slip Repair Coupling	
7955	Press Gas Slip Repair Coupling 32mm
7956	Press Gas Slip Repair Coupling 40mm
7957	Press Gas Slip Repair Coupling 50mm
Press Gas Reducing Coupling F/F	
7958	Press Gas Reducing Coupling 32 x 20mm F/F
7959	Press Gas Reducing Coupling 32 x 25mm F/F
7960	Press Gas Reducing Coupling 40 x 25mm F/F
7961	Press Gas Reducing Coupling 40 x 32mm F/F
7962	Press Gas Reducing Coupling 50 x 25mm F/F
7963	Press Gas Reducing Coupling 50 x 32mm F/F
7964	Press Gas Reducing Coupling 50 x 40mm F/F
Press Gas Reducer M/F	
7965	Press Gas Reducer 32 x 20mm M/F
7966	Press Gas Reducer 32 x 25mm M/F
7967	Press Gas Reducer 40 x 25mm M/F
7968	Press Gas Reducer 40 x 32mm M/F
7969	Press Gas Reducer 50 x 25mm M/F
7970	Press Gas Reducer 50 x 32mm M/F
7971	Press Gas Reducer 50 x 40mm M/F
Press Gas Elbow F/F 90°	
7972	Press Gas Elbow 32mm x 90 F/F
7973	Press Gas Elbow 40mm x 90 F/F
7974	Press Gas Elbow 50mm x 90 F/F
Press Gas Elbow F/F 45°	
7975	Press Gas Elbow 32mm x 45 F/F
7976	Press Gas Elbow 40mm x 45 F/F
7977	Press Gas Elbow 50mm x 45 F/F
Press Gas Tee	
7978	Press Gas Tee 32mm
7979	Press Gas Tee 40mm
7980	Press Gas Tee 50mm
Press Gas Tee Reducing	
7981	Press Gas Tee 32 x 32 x 20
7982	Press Gas Tee 32 x 32 x 25
7983	Press Gas Tee 40 x 40 x 20
7984	Press Gas Tee 40 x 40 x 25
7985	Press Gas Tee 40 x 40 x 32
7986	Press Gas Tee 50 x 50 x 25
7987	Press Gas Tee 50 x 50 x 32
7988	Press Gas Tee 50 x 50 x 40
Press Gas End Cap	
7989	Press Gas End Cap 32mm
7990	Press Gas End Cap 40mm
7991	Press Gas End Cap 50mm
Press Gas Adaptor MI	
7992	Press Gas Adaptor 32mm x 32MI
7993	Press Gas Adaptor 40mm x 40MI
7994	Press Gas Adaptor 50mm x 50MI
Press Gas Adaptor FI	
7995	Press Gas Adaptor 32mm x 32FI
7996	Press Gas Adaptor 40mm x 40FI
7997	Press Gas Adaptor 50mm x 50FI

PRESS WATER FITTINGS

CODE	SIZE	CODE	SIZE
Press Water Coupling		Press Water Elbow M/F 90°	
7901	Press Water Coupling 32mm	7927	Press Water Elbow 32mm x 90 M/F
7902	Press Water Coupling 40mm	7928	Press Water Elbow 40mm x 90 M/F
7903	Press Water Coupling 50mm	7929	Press Water Elbow 50mm x 90 M/F
Press Water Slip Repair Coupling		Press Water Elbow F/F 45°	
7904	Press Water Slip Repair Coupling 32mm	7930	Press Water Elbow 32mm x 45 F/F
7905	Press Water Slip Repair Coupling 40mm	7931	Press Water Elbow 40mm x 45 F/F
7906	Press Water Slip Repair Coupling 50mm	7932	Press Water Elbow 50mm x 45 F/F
Press Water Reducing Coupling F/F		Press Water Tee	
7907	Press Water Reducing Coupling 32 x 20mm F/F	7933	Press Water Tee 32mm
7908	Press Water Reducing Coupling 32 x 25mm F/F	7934	Press Water Tee 40mm
7909	Press Water Reducing Coupling 40 x 20mm F/F	7935	Press Water Tee 50mm
7910	Press Water Reducing Coupling 40 x 25mm F/F	Press Water Tee Reducing	
7911	Press Water Reducing Coupling 40 x 32mm F/F	7936	Press Water Tee 32 x 32 x 20
7912	Press Water Reducing Coupling 50 x 20mm F/F	7937	Press Water Tee 32 x 32 x 25
7913	Press Water Reducing Coupling 50 x 25mm F/F	7938	Press Water Tee 40 x 40 x 25
7914	Press Water Reducing Coupling 50 x 32mm F/F	7939	Press Water Tee 40 x 40 x 32
7915	Press Water Reducing Coupling 50 x 40mm F/F	7940	Press Water Tee 50 x 50 x 25
Press Water Reducer M/F		7941	Press Water Tee 50 x 50 x 32
7916	Press Water Reducer 32 x 20mm M/F	7942	Press Water Tee 50 x 50 x 40
7917	Press Water Reducer 32 x 25mm M/F	Press Water End Cap	
7918	Press Water Reducer 40 x 20mm M/F	7943	Press Water End Cap 32mm
7919	Press Water Reducer 40 x 25mm M/F	7944	Press Water End Cap 40mm
7920	Press Water Reducer 40 x 32mm M/F	7945	Press Water End Cap 50mm
7921	Press Water Reducer 50 x 25mm M/F	Press Water Adaptor MI	
7922	Press Water Reducer 50 x 32mm M/F	7946	Press Water Adaptor 32mm x 32MI
7923	Press Water Reducer 50 x 40mm M/F	7947	Press Water Adaptor 40mm x 40MI
Press Water Elbow F/F 90°		7948	Press Water Adaptor 50mm x 50MI
7924	Press Water Elbow 32mm x 90 F/F	Press Water Adaptor FI	
7925	Press Water Elbow 40mm x 90 F/F	7949	Press Water Adaptor 32mm x 32FI
7926	Press Water Elbow 50mm x 90 F/F	7950	Press Water Adaptor 40mm x 40FI
		7951	Press Water Adaptor 50mm x 50FI

COPPER & BRASS

PRESS FITTINGS

Flame-free
Permanent V-Profile
press join
All fittings comply
with Australian
Standards AS3688

25 YEAR WARRANTY*

Against defects and
manufacturing faults in
CuPress fittings.

*when installed in accordance with national, state
and local plumbing codes by a licensed plumber.
Please contact Brasshards for a copy of our full
warranty document.



PLUMBING SUPPLIES SPECIALIST

all prices include GST

GAS FITTINGS



Press Gas Coupling

Code	Size
8639	15mm
8640	20mm
8641	25mm



Press Gas Slip Repair Coupling

Code	Size
8642	15mm
8643	20mm
8644	25mm



Press Gas Elbow f/f 90°

Code	Size
8645	15mm x 90
8646	20mm x 90
8647	25mm x 90



Press Gas Elbow f/f 45°

Code	Size
8697	15mm x 45
8648	20mm x 45
8649	25mm x 45



Press Gas Reducing Coupling f/f

Code	Size
8650	20mm x 15mm
8651	25mm x 20mm



Press Gas Reducer m/f

Code	Size
8652	20mm x 15mm
8653	25mm x 20mm



Press Gas Tee

Code	Size
8654	15mm
8655	20mm
8656	25mm



Press Gas Tee Reducing

Code	Size
8657	20 x 20 x 15
8658	25 x 25 x 15
8659	25 x 25 x 20



Press Gas End Cap

Code	Size
8660	15mm
8661	20mm
8662	25mm



Press Gas Elbow Lugged

Code	Size
8663	15mm x 15FI
8664	20mm x 20FI



Press Gas Elbow Lugged

Code	Size
8665	15mm x 15MI

EXCLUSIVE TO PLUMBERS CHOICE

Blockhead Press Gas Elbow Lugged (90mm)

15mm x 15MI
Code: 8698



Press Gas Adaptor MI

Code	Size
8666	15mm x 15MI
8667	20mm x 20MI
8668	25mm x 25MI



Press Gas Adaptor FI

Code	Size
8669	15mm x 15FI
8670	20mm x 20FI
8671	25mm x 25FI



Press Gas Slip Tee

Code	Size
8693	20mm

WATER FITTINGS



Press Water Coupling

Code	Size
8601	15mm
8602	20mm
8603	25mm



Press Water Slip Repair Coupling

Code	Size
8604	15mm
8605	20mm
8606	25mm



Press Water Elbow f/f 90°

Code	Size
8607	15mm x 90
8608	20mm x 90
8609	25mm x 90



Press Water Elbow f/f 45°

Code	Size
8610	15mm x 45
8611	20mm x 45
8612	25mm x 45



Press Water Elbow m/f 90°

Code	Size
8681	15mm
8682	20mm



Press Water Reducing Coupling f/f

Code	Size
8613	20mm x 15mm
8614	25mm x 20mm
8542	18mm x 15mm
8543	20mm x 18mm



Press Water Reducer m/f

Code	Size
8615	20mm x 15mm
8616	25mm x 20mm



Press Water End Cap

Code	Size
8623	15mm
8624	20mm
8625	25mm



Press Water Adaptor FI

Code	Size
8636	15mm x 15FI
8637	20mm x 20FI
8638	25mm x 25FI



Press Water Adaptor MI

Code	Size
8633	15mm x 15MI
8680	15mm x 20MI
8691	20mm x 15MI
8634	20mm x 20MI
8635	25mm x 25MI



Press Water Tee Reducing

Code	Size
8620	20 x 20 x 15
8621	25 x 25 x 15
8622	25 x 25 x 20
8683	20 x 15 x 15
8684	20 x 15 x 20



Press Water Tee

Code	Size
8617	15mm
8618	20mm
8619	25mm



Press Water Slip Tee

Code	Size
8692	15mm
8690	20mm
8694	20 x 20 x 15



Press Water Elbow Lugged

Code	Size
8626	15mm x 15FI
8598	20mm x 15FI
8627	20mm x 20FI

Press Water Elbow Lugged

Code	Size
8628	15mm x 15MI



Press Water Union Loose Nut (Flat seat)

Code	Size
8685	15mm x 15mm Press
8679	20mm x 20mm Press



Press Water Union Loose Nut Compression

Code	Size
8696	15mm x 15mm Press
8689	20mm x 20mm Press



Press Water Elbow MI

Code	Size
8631	15mm x 15MI
8632	20mm x 20MI



Press Water Elbow UNION

Code	Size
8687	15mm x 1/2"
8688	20mm x 3/4"



Press Water Elbow FI

Code	Size
8629	15mm x 15FI
8630	20mm x 20FI

EXCLUSIVE TO PLUMBERS CHOICE

Blockhead Press Water Elbow Lugged (90mm)

15mm x 15MI
Code: 8699



SPILL SAFE



STOP THE SLOP



Tip entire contents into pan



Allow to set

3 Remove pan

- Turn the pan water to GEL
- No more water spills to clean up

\$7.55
INC. GST
Code: 2509

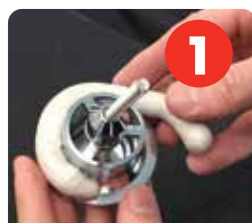
RED BACK



BEDDING COMPOUND

Permanent flexible seal for plugs & washers

- Easier clean up than silicone
- Remains flexible
- Temperature range: -10°C to +100°C
- Made in Germany



Place around plug & washer



Tighten into place



Remove excess. Job Complete



\$22.76
INC. GST
Code: 1846

RED BACK



SPECIAL



ONLY
\$82.50
INC GST



Includes Low Level Flush Pipe

FLUIDMASTER PRO CISTERN

Most Powerful Flush System
Adjustable up to 9/4.5L PRO Cistern with Link and Seat

- 4.5/3L Dual Flush Technology
- Simple Flush Volume Conversion to 6/3L or 9/4.5L
- UV Resistant - Certified
- Plastic Cistern with Bottom Inlet
- Saves Water
- INSTALL WITH CONFIDENCE**
- code: 2089



Valid until 30th June 2024

FRAMING STIFFENER PLATE



Are you complying with AS 1684.2 2021?

When holes for waste pipes or vents are drilled through top or bottom timber plate it must be reinforced.

- Framing Stiffener Plate is made from quality heavy gauge 1.55mm Galvanised Steel
- The Framing Stiffener Plate can be fitted above the timber plate if required



CODE: 2738

FRAMING STIFFENER PLATE

Kit includes: 1 x Frame Stiffener Plate
12 x Type 17 35mm x 12G Z/Yellow Screws

INSTALLATION NOTES:

- When the Stiffener Plate is fitted to the underside of the top plate, a hole of up to 60mm diameter is allowed in the plate.
- If the studs are too close together, the Stiffener Plate can be fitted to the top of the top plate.
- When fitting the Stiffener Plate to a stud the centre of the hole for pipework must be at least 100mm from any noggin or the top plate.
- Use **ALL 12 screws** provided to attach the Stiffener Plate to restore the strength of the studwork.

CHECK OUT OUR NEW CLEARANCE PAGE

CRACKING DEALS WHILE STOCKS LAST!

ITEMS ADDED REGULARLY

DRAINLAG 10M ROLL
\$7.00
SAVE \$7.07
CODE: 8720

RED BACK HEXTYTE
\$12.50
SAVE \$12.22
CODE: 5631
55m

THERMOCOUPLE 600mm UNIVERSAL
\$10.00
SAVE \$9.76
CODE: 8005

COVER PLATE WHITE PLASTIC RAISED 50mm
\$100
SAVE \$71.20
CODE: 2034
Per 200

AND MANY, MANY MORE....

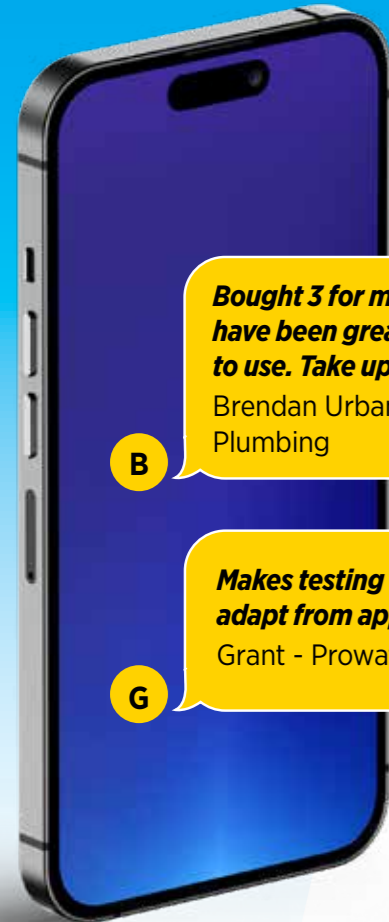
WWW.PLUMBERSCHOICE.COM.AU/CLEARANCE

CLEARANCE SALE CLEARANCE SALE CLEARANCE SALE CLEARANCE SALE



Jacko's Review

NOW
\$164
SAVE \$20
CODE: 7894



B Bought 3 for my guys. They have been great and easy to use. Take up no space.
Brendan Urban Tide Plumbing

G Makes testing quicker. Easy to adapt from appliances to lines.
Grant - Prowater Plumbing

Valid until 30th June 2024

plumtool™

SAFETY PROBE INSULATED

Find underground pipes without digging

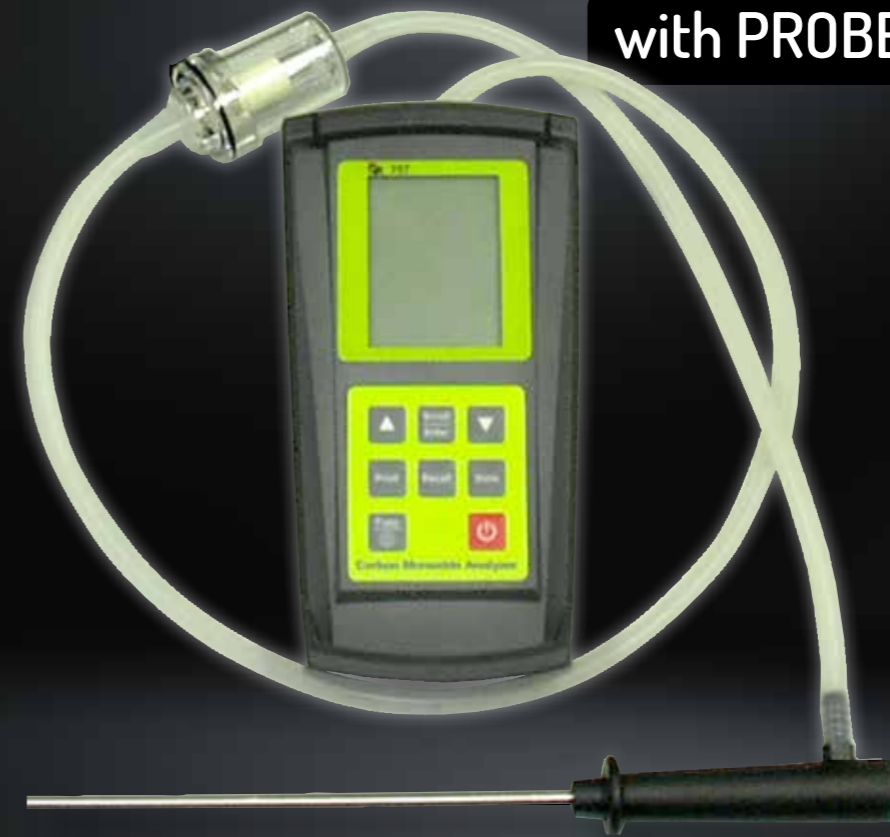
- Fully insulated handles, tested to 5,000 volts, to avoid electrocution
- Can be easily dismantled for ease of storage and transport

LENGTH 1200mm

CAUTION
USE ONLY AN INSULATED EARTH PROBE TO AVOID ELECTRIC SHOCKS

CARBON MONOXIDE ANALYSER

with PROBE



FREE
PLUMTEST SMOKE PEN
WITH EVERY CARBON MONOXIDE ANALYSER #8020

- Ambient CO testing
- Measures 0-10,000 ppm CO
- Pump driven
- 1 PPM sensitivity
- Auto zero
- Audible alarm
- Save and recall readings with time and date stamp
- Infrared port for use with optional A740 IR printer
- Testing from high heat/high heat sources with sampling

\$1210.00
Code: 8020

comes in sturdy carry case

Code: 9837
\$86.26

DETECTS SLIGHTEST AIR MOVEMENT & GAS SPILLAGE

As seen on VBA Training video
vba.vic.gov.au/carbon-monoxide-safety-program

plumtest

SMOKE PEN inc 6 Wicks

- Specified for carbon monoxide testing
- HVAC air movement or leakage checks
- Comes with 6 smoke wicks
- Ideal for testing smoke alarms
- Refill packs of wicks available
- Non-toxic, slow burning, smoke emitter

WATER TESTING

Plumtest Thermometer Digital

- Measures temperatures from -50 ° to 200 ° C.
- It is perfect for checking the out flow temperature of hot water units, thermostatic mixers and tempering valves.
- Includes battery

Code 1324

\$43.67
INC. GST



Flow Rate Cup Tester

- Scale measures flow rates of 0 to 17 litres per minute
- Measure water flow rates to determine if suitable flow is available prior to plumbing installation

Code 7276

\$38.67
INC. GST



Plumtest Water Pressure Tester on Hose 2500 Kpa

- Universal brass connector will fit to 1 inch or 3/4 inch BSP thread
- Glycerin filled gauge protects workings
- High pressure hose allows flexibility to make reading gauge easier
- Dual scale reads in both kPa and psi

\$98.24
INC. GST

Code 1119



Plumtest Test Bucket

- For pressure testing that water systems are sealed and free from leaks
- Reliable and accurate test results
- Suitable for residential or commercial use
- 12L Solid Steel Bucket
- Quality 2 valve system

Kit includes:

- 1.5m long hose
- 4 spare washers

Code 9866

\$547.03
INC. GST



RELIABLE & ACCURATE TEST RESULTS

DRAINAGE PLUGS

Inflatable Test Plugs

- With Schroeder Valve

50mm
w/ 1.5m hose
Code: 9006
\$107.80

100mm
w/ 2.5m hose
Code: 2009
\$132

150mm
w/ 1.5m hose
Code: 9007
\$176.00



Test Plug Right Angled with Handles 100mm

- The only plug to use when testing at a right angled junction
- Keeps hands out of drains
- Cannot be lost down drain
- Cast Aluminium
- Patented

Code: 2004

\$153.16



Inflatable Test Plug Pump

Code: 2104

- Suits Inflatable Test Plugs
- Hand pump
- Can't over inflate
- Convenient handy size

NEW



Test Plug Aluminium

- A breeze to install
- 2 convenient tie-off points

90mm

Code: 8765

\$64.68

100mm

Code: 2149

\$52.84



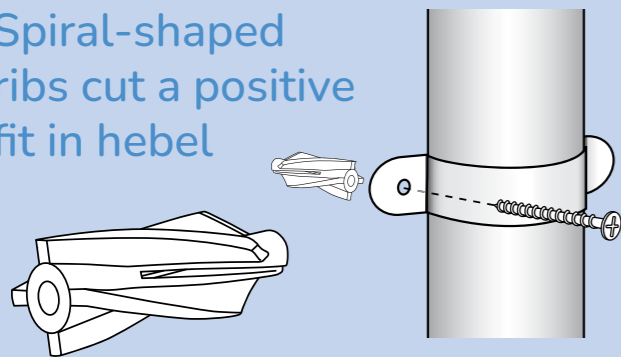
all prices include GST



downpipe fixing can be tricky, **but we have the answers**

Hebel Anchor

Spiral-shaped ribs cut a positive fit in hebel



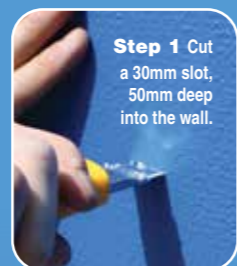
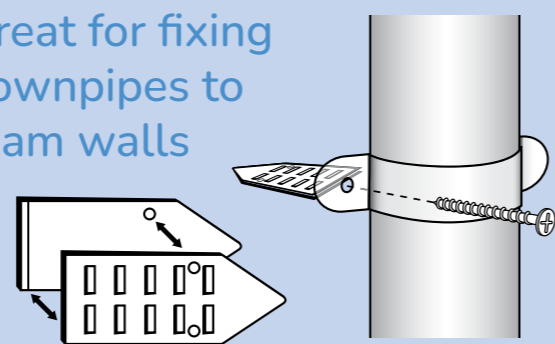
- The spiral-shaped outer ribs cut a positive fit in the soft building material
- Pre-drill with a 8mm drill bit
- Adapted for wood, self-tapping and chipboard screws of 4.0 to 5.0 diameter

8mm
\$71.50
INC. GST

CODE 1295
BAG QTY: 50

Styrowedge

Great for fixing downpipes to foam walls



Step 1 Cut a 30mm slot, 50mm deep into the wall.



Step 2 Take 2 Styrowedge halves and join the smooth sides together.



Step 3 Insert the Styrowedge into the slot in the wall. Ensure it is flush with the wall.

Step 5 Place downpipe & clip in position. Insert a 8-12 gauge screw into Styrowedge & tighten.



\$58.42
INC. GST

CODE 1222
BAG QTY: 50



BLACK ROCKET® NITRILE GLOVES

Value & incredible toughness working together

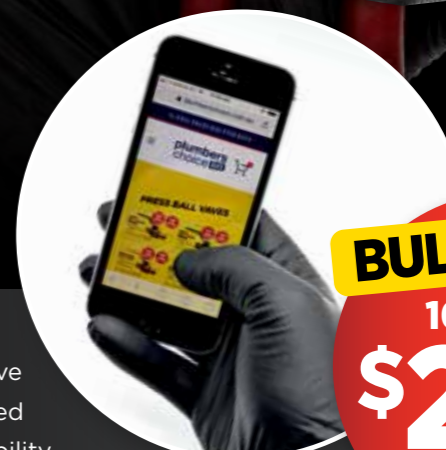


BLACK ROCKET® NITRILE DISPOSABLE GLOVES

The toughest, cost effective trade based black disposable gloves you will experience. Ultimate value and incredible toughness.



- 100% Nitrile
- Cost Effective
- Fully Textured
- Tough Durability
- Mobile Phone Compatible
- Latex Free & Powder Free
- Box of 100



BULK PRICE
10 BOXES
\$209
\$20.90 ea

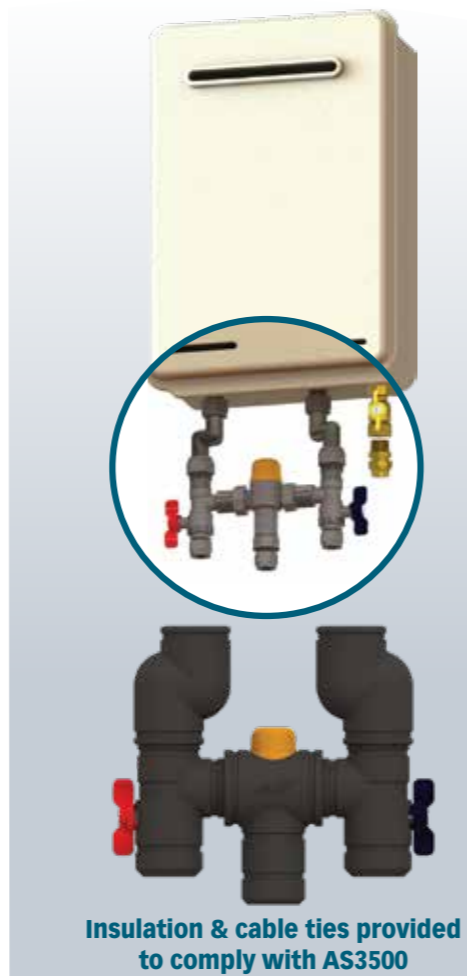
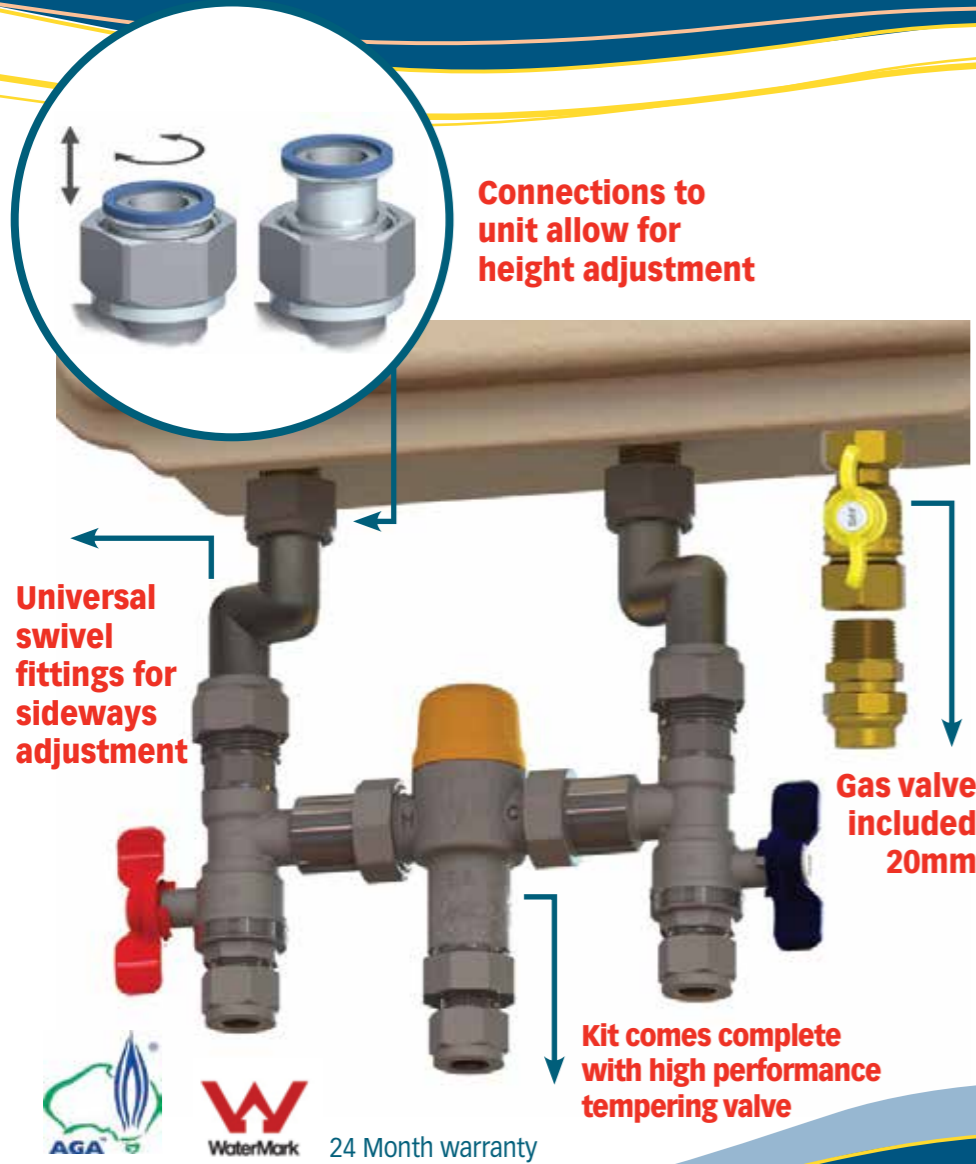
Valid until 30th June 2024

LRG | CODE: 5511

X-LRG | CODE: 5512

\$29.15 per box

Quickie Kit



Fit-off a hot water service in minutes!
Suits all instantaneous hot water services.

15mm outlet & tempering valve Code: 8300 | 20mm outlet & tempering valve Code: 8301

Andrew from AMT Plumbing in Bayswater said:

I recently tried the Quickie Kit on an install. I reckon it saved me at least 30-45 minutes. The insulation and cable ties included in the kit made for a nice neat finish. Everything I needed was there.

PRESS UNION BALL VALVE KIT

- A complete kit to suit your specific combination of gas and water connection
- Rubber Gaskets - Easy No Leak Sealing
- Gas Safety Certified



PRESS UNION BALL VALVE KIT
20mm GAS X 15mm WATER



\$88.33
INC. GST
Code: 8551

PRESS UNION BALL VALVE KIT
20mm GAS & WATER



\$88.33
INC. GST
Code: 8552

LITTLE PLUMBERS PLAYGROUND

word scramble

can you rearrange these letters to work out the words?

- pumberlricheo
- omlltuop
- inatrepce
- nlcosiei
- taerdlyon
- utsleptm

.....



Match up

Draw a line from word to item to match them up

Shifter

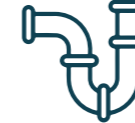
Toilet

Tool belt

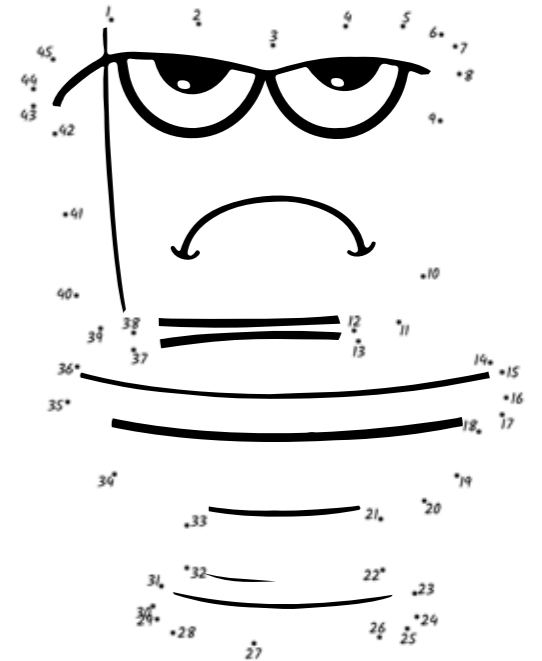
Pipe

Tempering Valve

Tap



dot to dot

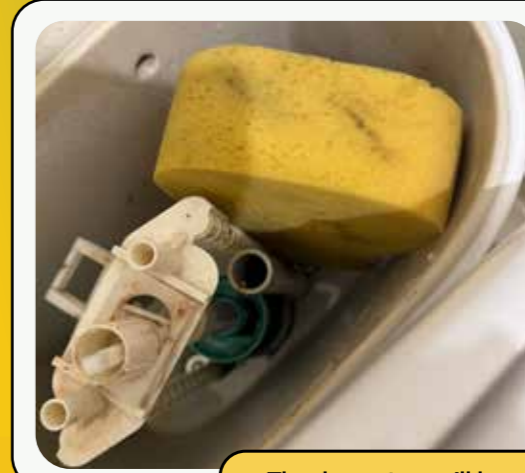


Answers: Word Scramble - Plumbers Choice, Plumtool, Apprentice, Silicone, Trade Only, Plumtest

tip of the month

To get involved send us an email
info@plumberschoice.com.au

Every featured story receives **\$200** Store Credit



Use a sponge to get all the water out of the bottom of the toilet cistern. You can then remove the cistern or replace the inlet valve without spilling any water.

Courtesy of Tony from Asquith Plumbing

Thanks mate, we'll be sending you \$200 store credit

RIGHT ANGLE GAS BALL VALVE

MxF
15mm



cHS CHRIS HUNTER
SALES



Saves installation time

Fewer fittings required on installation

Takes up less space than
traditional install

Leaves a professional finish

AGA approved

Code: 8099

FLEXIBLE MIXER TAP DRIVER KIT

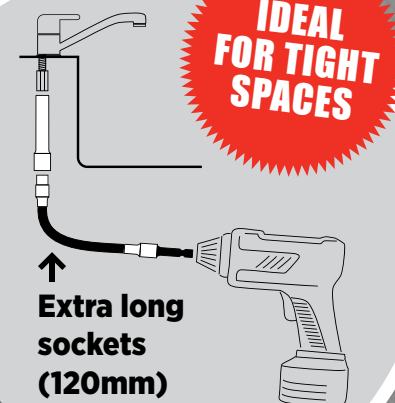
Tighten basin and
sink mixers fast

Kit Contains:

- 3/8 Flexible Drive (200mm long)
- 3/8 Hex Adaptor (40mm long)
- 3/8 Drive Socket Set:
9mm x 120mm, 10mm x 120mm,
11mm x 120mm, 12mm x 120mm,
13mm x 120mm

CODE: 9828

\$119.20
INC. GST



**IDEAL
FOR TIGHT
SPACES**

↑
**Extra long
sockets
(120mm)**

plumtool™

Innovative tools for **PLUMBERS**