

plumbers choice

TRADE
ONLY



**NATURAL GAS IS
AN EXCELLENT
TRANSITION FUEL**

489 Mountain Highway, Bayswater, VIC 3153

Email: info@plumberschoice.com.au • Ph: (03) 9720 8274

www.plumberschoice.com.au



Luke's Editorial



NATURAL GAS IS AN EXCELLENT TRANSITION FUEL



Natural gas is an excellent transitional fuel that can complement renewable energy sources, especially for households that use gas for cooking in the evening when the sun isn't shining.

Natural gas is a relatively clean burning fossil fuel compared to coal and oil, releasing 50% less pollutants and greenhouse gases.

It is also abundant and affordable, making it a reliable energy source while countries work to expand renewable energy production. Its low cost and availability mean it can help reduce electricity prices, making it a responsible and sensible choice for households.

Additionally, the gas infrastructure that has already been paid for (both financially and in carbon inputs) takes pressure off our electrical network that will come under increasing load in the coming years as we transition to renewables.

Of course, at Plumbers Choice we protect plumbers and gas fitters who are doing this important work by never selling to the general public.

Our goal is to change the way plumbing goods are sold in Australia to a Trade Only Industry.

LUKE BOLTON
DIRECTOR, PLUMBERS CHOICE

plumbers
choice TRADE ONLY

HOW TO ORDER



Online - 24 hours
www.plumberschoice.com.au



Email - 24 hours
sales@plumberschoice.com.au



Phone - Business Hours
(03) 9720 8274
Our knowledgeable staff will take your order.



At our Trade Outlets
Monday - Friday
489 Mountain Highway, Bayswater, VIC 3153
4/200 Woodpark Road, Smithfield, NSW 2164



Personal Sales Rep
Your personal Sales Representative is able to tailor our service to suit your needs.



**Shop
Trade Only
from the palm
of your
hand!**

SPECIAL

TEMPERING VALVES

ONLY
\$49.⁵⁰
INC. GST



15mm

YELLOW CAP 15mm

- Suitable for storage hot water systems
- Insulation included
- 2 year warranty
- Conforms AS4032.2 LIC No. 20137

Code: 6810

ONLY
\$69.³⁰
INC. GST



15mm

ORANGE CAP 15mm

- Suitable for solar and instantaneous hot water systems
- Insulation included
- High performance
- 2 year warranty
- Conforms AS4032.2 LIC No. 20137

Code: 6811

Valid until 30th June 2023

AVG
Australian Valve Group

W
WaterMark

AS GAS HEATERS FIRE UP THIS WINTER, HAVING THE **CORRECT EQUIPMENT** **IS VITAL**

PLUMTEST MANOMETER

Designed to meet all requirements
of the professional plumber

- Aluminium case
- Durable cover protects calibrations
- 300mm manometer for appliance testing
- 800mm manometer for line testing
- Magnet is riveted to the back of the 300mm manometer case to allow the manometer to be attached to an appliance
- Comes with rubber connecting hose

300mm
\$128.82

Code: 1870

800mm
\$160.53

Code: 1743





\$586.39

Code: 4512

PLUMTEST DIGITAL MANOMETER KIT

Suitable for appliance and line testing 0-15 kPa

- Within 1% accuracy
- 3 year warranty
- Comes with hose and hand bellows
- Comes with testing tee



\$528.45

Code: 1905

PLUMTEST DRY MANOMETER

10 kPa KIT

Fast accurate way to test gas fitting lines

- Fits directly onto the gas stand pipe
- No more leaky hoses or water loss
- No batteries required
- Can be calibrated by plumber
- Kit comes with hand bellows



\$586.39

Code: 1826

PLUMTEST COMBO DIGITAL GAS TESTER

COMBO

- For testing gas lines and appliances
- Easy use click on connectors
- Digital gauge, Testing tee, Hand bellows, 700mm rubber hose
- Operating Range 0 kPa to 30 kPa
- Suits Meters with 25mm thread



\$86.26

Code: 9837

PLUMTEST SMOKE PEN

with 6 WICKS

Ideal for testing the slightest air movement & gas spillage

- Specified for carbon monoxide testing
- HVAC air movement or leakage checks
- Comes with 6 smoke wicks
- Ideal for testing smoke alarms
- Refill packs of wicks available
- Non-toxic, slow burning, smoke emitter

CARBON MONOXIDE ANALYSER

with PROBE

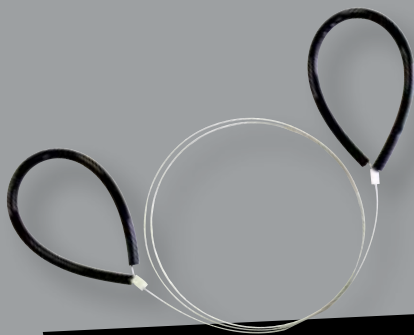
\$1151.63

Code: 8020



- Ambient CO testing
- Measures 0-10,000 ppm CO
- Pump driven
- 1 PPM sensitivity
- Auto zero
- Audible alarm
- Save and recall readings with time and date stamp
- Infrared port for use with optional A740 IR printer
- Testing from high heat/high heat sources with sampling

NEED TO CUT PVC?



CABLE SAW

Handy tool for cutting
PVC pipe in difficult
to reach places



\$18.78

INC. GST
CODE 9670



PIPE CUTTER AUTOCUT MONUMENT

Quick & Clean Cut

- Quality UK Designed & Made
- Light Weight
- Spare blades available
- Spare blade suits both Cutters

40mm PVC

\$49.72

INC. GST
CODE 2644

50mm PVC

\$53.02

INC. GST
CODE 2645

PVC PIPE SAW



Unique teeth
design will not
shatter pipe

- 500mm
- Specifically for cutting PVC pipe
- Comes with deburrer
- Will not shatter pipe
- Blade length 420mm

\$70.33

INC. GST
CODE 8011



RECIPROCATING SAW BLADE SAMURAI



CUT IS FREE OF BURRS

- Specifically designed for cutting PVC pipe
- Cuts straight
- Made in Japan
- 210mm

\$19.51

INC. GST
CODE 9632



SAMURAI
RECIPROCATING
SAW BLADE #9632



**IDEAL
FOR
CONFINED
SPACES**

INTERNAL PIPE CUTTER PLUMTOOL

with **DIAMOND
WHEEL**

- Will cut pipe from 40mm up to 150mm
- Fits into a battery drill for easy use
- Diamond wheel will not blunt on concrete or tiles



\$46.16

INC. GST
CODE 1347

HACK SAW BAHCO

**The most
common
hack saw on
the market**

- Swedish design and quality
- Very high blade tension for straight and accurate cuts



\$59.44

INC. GST
CODE 9917

LENOX HACK SAW BLADE

- Made in the USA
- 24 TPI x 300mm

\$4.41

INC. GST
CODE 9167

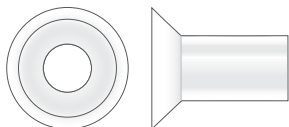


WC installs or repairs?



Pan Cone Black With Skirt

40mm **Code: 9971**
50mm **Code: 9972**

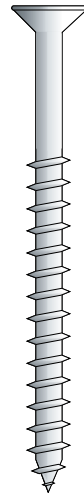


Pan Savers

- protect pans from damage and cracking

Code: 1983

**BOX
100**



Pan Screws S/S 12G

- Non-corrosive, will not go green
- 25mm make great dummy screws
- The biggest range
- Per 100

25mm	12G	Code: 9622
50mm	12G	Code: 9186
65mm	12G	Code: 2505
75mm	12G	Code: 1400



Wax Pan Seal

- Repair leaky toilets without removing the pan
- Forms a watertight, gastight, and odour-proof seal
- moulded to shape and ready to use
- Remains flexible, adjusts to expansion, contraction and settling

Code: 1882



Fluidmaster®



CODE 2095

Side Entry Cistern Inlet Valve

1/2" Plastic Thread

- Quick release system for easy maintenance
- Compact design
- Anti-syphon
- Quiet fill



CODE 2096

Side Entry Cistern Inlet Valve

3/8" Brass Thread

- Quick release system for easy maintenance
- Compact design
- Anti-syphon
- Quiet fill

CODE: 1997

Universal Dual Flush Cable Valve

- Genuine Fluidmaster product
- Beware of imitations
- Top, front or side fitted flush buttons



CODE: 2131

Universal Dual Flush Outlet Valve

- Fixes leaking toilets and saves water
- Full and half flush
- Easy adjustment
- Includes standard 38mm dual flush buttons
- Other button sizes available





Cistern Washer Kit 100 Piece

- Contains 11 types of the most common washers
- Never run out of cistern washers again

Code: 6687

KIT CONTAINS

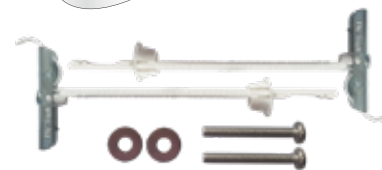
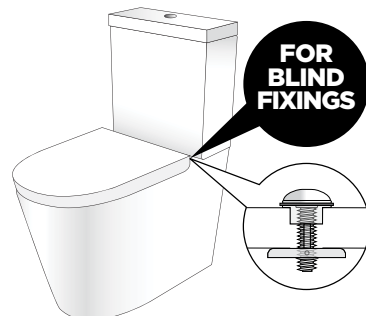
- 7 x 9603 Cistern Washer Doulton Top Hat Old Style Ballcock
- 4 x Cistern Washer Brent New Style
- 3 x Cistern Washers Replacement Fluidmaster (242)
- 5 x Cistern Washer Gebrit Seating Silicone
- 7 x Cistern Washer Doulton Top Hat New Style Ballcock
- 25 x Float Valve Washers 1/2 Inch
- 5 x Cistern Washer Doulton Concave Suction
- 7 x Cistern Washer 'K' Seating
- 15 x Cistern Washer Caroma Seating Red Silicone
- 7 x Cistern Washer Doulton Seating
- 18 x Cistern Washer Caroma New Style Ballcock #2



Toggle Springs For Cistern S/S

- Stainless steel bolt & washer
- Will not rust
- 3/16 Inch x 75mm
- Zinc plated toggle
- Designed to give maximum holding power in cavity walls

Code: 3157



Toilet Seat Fixing TST6

- Top/Blind fixing toilet seat anchor kit
- Easy to fit
- Includes stainless steel bolts and washers

Code: 6169



PRO SERIES® CISTERN with Link and Seat

\$114.55

INC GST | **CODE 2089**

Most Powerful Flush System

- Low Level Flush Pipe
- 4.5/3L Dual Flush Technology
- Simple Flush Volume Conversion to 6/3L or 9/4.5L
- UV Resistant - Certified
- Plastic Cistern with Bottom Inlet
- Saves Water
- Cistern - 391mm H x 420mm D x 133mm W



CODE: 2099

Pro Series Cistern Inlet Valve

- Ultra quiet
- Fast refill
- Reduces water hammer
- Genuine Fluidmaster product
- Beware of imitations
- 5 Year Warranty



CODE: 2040

Brass Stem Cistern Inlet Valve

- Heavy duty brass thread will not cross thread
- Ultra quiet
- Fast refill
- Reduces water hammer
- Genuine Fluidmaster product
- Beware of imitations

STEEL STUDWORK?

plumbers choice

HAS THE ANSWERS!



\$599³⁷
INC. GST
Code: 1914

STUD PUNCH

- For the plumber in a hurry!
- Designed for cutting holes in steel stud work
- Cuts holes super fast

plumtool™



BAG
100

\$427⁴
INC. GST
Code: 9241

plumtool™

MULTI-FIT GROMMET

Works in varying thicknesses of studwork (thickness 0.42mm to 2mm)

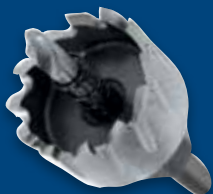
Complies to Australian Standards AS3500.12 Clause 5.5 2.2 Part C



**34MM
AND
58MM**

STEEL STUD DRILL

- Also great in roofing work for overflows, etc
- 34mm to suit yellow grommets
- 58mm for drainage vents



34mm

\$70⁵⁵
INC. GST
Code: 2000



58mm

\$152⁰⁹
INC. GST
Code: 2001



STUD CLIPS WITH SD SCREW

- Works in any size hole

BAG
100



16mm

\$30⁵³
INC. GST
Code: 5571

**16MM
AND
20MM**



20mm

\$32⁴³
INC. GST
Code: 5572

EACH HEX HEAD BAG COMES WITH A **FREE** DRIVER BIT

NEW



BAG QTY
100

**PEX SADDLES
HEX HEAD SD SCREW**

• 16mm
Code: 9075 **\$35.48**



BAG QTY
100

**PEX SADDLES
HEX HEAD SD SCREW**

• 20mm
Code: 9076 **\$36.42**

DUALPEX

BAG QTY
100



**DUALPEX
HEX HEAD SD SCREW**

• 16mm to 20mm
Code: 5577 **\$39.87**

DUALPEX

BAG QTY
100



WITH
TAB

**DUALPEX W/TAB
HEX HEAD SD SCREW**

• 16mm to 20mm
Code: 5578 **\$42.70**



**ONE
CLIP FITS
16MM - 20MM
PEX PIPE**



BAG
100

\$33³⁴
INC. GST
Code: 5558

**DUALPEX CLIP
SD SCREW**



BAG
100

With
Tab

\$41¹¹
INC. GST
Code: 5575

**DUALPEX CLIP
SD SCREW
WITH TAB**



BAG
100

With
Tab

16mm
Code: 4526 **\$34.83**
20mm
Code: 4527 **\$38.55**

**PEX SADDLES
SD SCREW
WITH TAB**

PRELOADED

WITH HEX
SD SCREWS

Code: 1471



330mm - 600mm

UNLOADED

Code: 1450



330mm - 600mm

**MINI
PRELOADED**

WITH BUGLE
SCREWS

Code: 1474



190mm - 330mm

FASTANOG

- Faster than timber noggins
- Compulsory in termite areas
- Set back measurer



preloaded
set back
measurer

**SLIDE TO
ADJUST
LENGTH**



Spend \$500
on any combination of
32-50mm Press fittings
and you will receive a

\$50
CREDIT

**AT PLUMBERS
CHOICE**



**ALWAYS
IN STOCK**



COPPER & BRASS LARGE PRESS FITTINGS

32-50mm

PRESS GAS FITTINGS

CODE	SIZE
Press Gas Coupling	
7952	Press Gas Coupling 32mm
7953	Press Gas Coupling 40mm
7954	Press Gas Coupling 50mm
Press Gas Slip Repair Coupling	
7955	Press Gas Slip Repair Coupling 32mm
7956	Press Gas Slip Repair Coupling 40mm
7957	Press Gas Slip Repair Coupling 50mm
Press Gas Reducing Coupling F/F	
7958	Press Gas Reducing Coupling 32 x 20mm F/F
7959	Press Gas Reducing Coupling 32 x 25mm F/F
7960	Press Gas Reducing Coupling 40 x 25mm F/F
7961	Press Gas Reducing Coupling 40 x 32mm F/F
7962	Press Gas Reducing Coupling 50 x 25mm F/F
7963	Press Gas Reducing Coupling 50 x 32mm F/F
7964	Press Gas Reducing Coupling 50 x 40mm F/F
Press Gas Reducer M/F	
7965	Press Gas Reducer 32 x 20mm M/F
7966	Press Gas Reducer 32 x 25mm M/F
7967	Press Gas Reducer 40 x 25mm M/F
7968	Press Gas Reducer 40 x 32mm M/F
7969	Press Gas Reducer 50 x 25mm M/F
7970	Press Gas Reducer 50 x 32mm M/F
7971	Press Gas Reducer 50 x 40mm M/F
Press Gas Elbow F/F 90°	
7972	Press Gas Elbow 32mm x 90 F/F
7973	Press Gas Elbow 40mm x 90 F/F
7974	Press Gas Elbow 50mm x 90 F/F
Press Gas Elbow F/F 45°	
7975	Press Gas Elbow 32mm x 45 F/F
7976	Press Gas Elbow 40mm x 45 F/F
7977	Press Gas Elbow 50mm x 45 F/F
Press Gas Tee	
7978	Press Gas Tee 32mm
7979	Press Gas Tee 40mm
7980	Press Gas Tee 50mm
Press Gas Tee Reducing	
7981	Press Gas Tee 32 x 32 x 20
7982	Press Gas Tee 32 x 32 x 25
7983	Press Gas Tee 40 x 40 x 20
7984	Press Gas Tee 40 x 40 x 25
7985	Press Gas Tee 40 x 40 x 32
7986	Press Gas Tee 50 x 50 x 25
7987	Press Gas Tee 50 x 50 x 32
7988	Press Gas Tee 50 x 50 x 40
Press Gas End Cap	
7989	Press Gas End Cap 32mm
7990	Press Gas End Cap 40mm
7991	Press Gas End Cap 50mm
Press Gas Adaptor MI	
7992	Press Gas Adaptor 32mm x 32MI
7993	Press Gas Adaptor 40mm x 40MI
7994	Press Gas Adaptor 50mm x 50MI
Press Gas Adaptor FI	
7995	Press Gas Adaptor 32mm x 32FI
7996	Press Gas Adaptor 40mm x 40FI
7997	Press Gas Adaptor 50mm x 50FI

PRESS WATER FITTINGS

CODE	SIZE	CODE	SIZE
Press Water Coupling		Press Water Elbow M/F 90°	
7901	Press Water Coupling 32mm	7927	Press Water Elbow 32mm x 90 M/F
7902	Press Water Coupling 40mm	7928	Press Water Elbow 40mm x 90 M/F
7903	Press Water Coupling 50mm	7929	Press Water Elbow 50mm x 90 M/F
Press Water Slip Repair Coupling		Press Water Elbow F/F 45°	
7904	Press Water Slip Repair Coupling 32mm	7930	Press Water Elbow 32mm x 45 F/F
7905	Press Water Slip Repair Coupling 40mm	7931	Press Water Elbow 40mm x 45 F/F
7906	Press Water Slip Repair Coupling 50mm	7932	Press Water Elbow 50mm x 45 F/F
Press Water Reducing Coupling F/F		Press Water Tee	
7907	Press Water Reducing Coupling 32 x 20mm F/F	7933	Press Water Tee 32mm
7908	Press Water Reducing Coupling 32 x 25mm F/F	7934	Press Water Tee 40mm
7909	Press Water Reducing Coupling 40 x 20mm F/F	7935	Press Water Tee 50mm
7910	Press Water Reducing Coupling 40 x 25mm F/F	Press Water Tee Reducing	
7911	Press Water Reducing Coupling 40 x 32mm F/F	7936	Press Water Tee 32 x 32 x 20
7912	Press Water Reducing Coupling 50 x 20mm F/F	7937	Press Water Tee 32 x 32 x 25
7913	Press Water Reducing Coupling 50 x 25mm F/F	7938	Press Water Tee 40 x 40 x 25
7914	Press Water Reducing Coupling 50 x 32mm F/F	7939	Press Water Tee 40 x 40 x 32
7915	Press Water Reducing Coupling 50 x 40mm F/F	7940	Press Water Tee 50 x 50 x 25
Press Water Reducer M/F		7941	Press Water Tee 50 x 50 x 32
7916	Press Water Reducer 32 x 20mm M/F	7942	Press Water Tee 50 x 50 x 40
7917	Press Water Reducer 32 x 25mm M/F	Press Water End Cap	
7918	Press Water Reducer 40 x 20mm M/F	7943	Press Water End Cap 32mm
7919	Press Water Reducer 40 x 25mm M/F	7944	Press Water End Cap 40mm
7920	Press Water Reducer 40 x 32mm M/F	7945	Press Water End Cap 50mm
7921	Press Water Reducer 50 x 25mm M/F	Press Water Adaptor MI	
7922	Press Water Reducer 50 x 32mm M/F	7946	Press Water Adaptor 32mm x 32MI
7923	Press Water Reducer 50 x 40mm M/F	7947	Press Water Adaptor 40mm x 40MI
Press Water Elbow F/F 90°		7948	Press Water Adaptor 50mm x 50MI
7924	Press Water Elbow 32mm x 90 F/F	Press Water Adaptor FI	
7925	Press Water Elbow 40mm x 90 F/F	7949	Press Water Adaptor 32mm x 32FI
7926	Press Water Elbow 50mm x 90 F/F	7950	Press Water Adaptor 40mm x 40FI
		7951	Press Water Adaptor 50mm x 50FI

EXCLUSIVE TO PLUMBERS CHOICE

PRESS SLIP TEES



- 25 year warranty*
- Permanent V-Profile press join profile
- Leak detection o-ring
- Complies with Australian Standards AS3688

STEP 1



Mark 24mm gap in copper using guide on fitting

STEP 2



Cut 24mm Gap in Copper

STEP 3



Pull copper back to slide tee onto one side

STEP 4



Slide back into position and crimp press fitting

PRESS WATER SLIP TEE

15mm

\$11.97

INC. GST

CODE 8692

PRESS WATER SLIP TEE

20mm

\$13.41

INC. GST

CODE 8690

PRESS WATER SLIP TEE

20x20x15mm

\$16.84

INC. GST

CODE 8694

PRESS GAS SLIP TEE

20mm

\$17.85

INC. GST

CODE 8693

BLOCK HEAD

SAME PRICE AS A TRADITIONAL LUGGIE!

- Reduce the number of noggins required
- Can press it while in place
- Lead free brass
- 25 year warranty
- Fix it from any direction



BRASSHARDS
EST. 1967

PLUMBING SUPPLIES SPECIALIST

PATENTED

Blockhead Press Water Elbow Lugged
15mm x 15MI (90mm)
CODE: 8699

Blockhead Press Gas Elbow Lugged
15mm x 15MI (90mm)
CODE: 8698



Same day delivery for Sydney and Melbourne Metro



PRESS GAS FITTINGS



PRESS GAS COUPLING

CODE	SIZE	PRICE
8639	15mm	\$6.26
8640	20mm	\$8.04
8641	25mm	\$13.75



PRESS GAS SLIP REPAIR COUPLING

CODE	SIZE	PRICE
8642	15mm	\$6.00
8643	20mm	\$7.54
8644	25mm	\$11.69



PRESS GAS ELBOW F/F 90°

CODE	SIZE	PRICE
8645	15mm x 90	\$7.44
8646	20mm x 90	\$9.72
8647	25mm x 90	\$17.86



PRESS GAS ELBOW F/F 45°

CODE	SIZE	PRICE
8697	15mm x 45	\$8.50
8648	20mm x 45	\$11.60
8649	25mm x 45	\$15.46



PRESS GAS REDUCING COUPLING F/F

CODE	SIZE	PRICE
8650	20mm x 15mm	\$11.11
8651	25mm x 20mm	\$13.70



PRESS GAS REDUCER M/F

CODE	SIZE	PRICE
8652	20mm x 15mm	\$9.71
8653	25mm x 20mm	\$13.12



PRESS GAS TEE

CODE	SIZE	PRICE
8654	15mm	\$8.59
8655	20mm	\$14.81
8656	25mm	\$23.15



PRESS GAS TEE REDUCING

CODE	SIZE	PRICE
8657	20 x 20 x 15	\$15.29
8658	25 x 25 x 15	\$23.52
8659	25 x 25 x 20	\$26.00



PRESS GAS END CAP

CODE	SIZE	PRICE
8660	15mm	\$8.10
8661	20mm	\$9.13
8662	25mm	\$16.08



PRESS GAS ELBOW LUGGED

CODE	SIZE	PRICE
8663	15mm x 15FI	\$18.40
8664	20mm x 20FI	\$20.12



BLOCKHEAD PRESS GAS ELBOW LUGGED (90MM)

CODE	SIZE	PRICE
8698	15mm x 15MI	\$18.40



PRESS GAS ADAPTOR MI

CODE	SIZE	PRICE
8666	15mm x 15MI	\$5.51
8667	20mm x 20MI	\$13.59
8668	25mm x 25MI	\$21.39



PRESS GAS ADAPTOR FI

CODE	SIZE	PRICE
8669	15mm x 15FI	\$7.44
8670	20mm x 20FI	\$11.32
8671	25mm x 25FI	\$15.43



PRESS GAS SLIP TEE

CODE	SIZE	PRICE
8693	20mm	\$17.85

25 YEAR WARRANTY*

Brasshards is proud to offer a 25 year warranty against defects and manufacturing faults in CuPress fittings (when installed in accordance with national, state and local plumbing codes by a licensed plumber). Issues arising from incorrect installation, misuse or environmental elements are not covered by this warranty. Please contact Brasshards for a copy of our full warranty document.

PRESS WATER FITTINGS

- Flame-free
- Permanent V-Profile press join
- All fittings comply with Australian Standards AS3688



PRESS WATER COUPLING

CODE	SIZE	PRICE
8601	15mm	\$4.24
8602	20mm	\$6.28
8603	25mm	\$8.92



PRESS WATER SLIP REPAIR COUPLING

CODE	SIZE	PRICE
8604	15mm	\$4.81
8605	20mm	\$7.12
8606	25mm	\$10.78



PRESS WATER ELBOW F/F 90°

CODE	SIZE	PRICE
8607	15mm x 90	\$4.81
8608	20mm x 90	\$7.36
8609	25mm x 90	\$13.57



PRESS WATER ELBOW F/F 45°

CODE	SIZE	PRICE
8610	15mm x 45	\$6.01
8611	20mm x 45	\$8.28
8612	25mm x 45	\$15.24



PRESS WATER ELBOW M/F 90°

CODE	SIZE	PRICE
8681	15mm	\$5.55
8682	20mm	\$7.29



PRESS WATER REDUCING COUPLING F/F

CODE	SIZE	PRICE
8613	20mm x 15mm	\$9.61
8614	25mm x 20mm	\$16.39
8542	18mm x 15mm	\$21.89
8543	20mm x 18mm	\$24.22



PRESS WATER REDUCER M/F

CODE	SIZE	PRICE
8615	20mm x 15mm	\$8.62
8616	25mm x 20mm	\$12.24



PRESS WATER END CAP

CODE	SIZE	PRICE
8623	15mm	\$7.62
8624	20mm	\$9.23
8625	25mm	\$18.07



PRESS WATER TEE

CODE	SIZE	PRICE
8617	15mm	\$7.41
8618	20mm	\$11.17
8619	25mm	\$20.72



PRESS WATER TEE REDUCING

CODE	SIZE	PRICE
8620	20 x 20 x 15	\$13.85
8621	25 x 25 x 15	\$19.60
8622	25 x 25 x 20	\$23.53
8683	20 x 15 x 15	\$18.29
8684	20 x 15 x 20	\$19.24



PRESS WATER SLIP TEE

CODE	SIZE	PRICE
8692	15mm	\$11.96
8690	20mm	\$13.41
8694	20x20x15	\$16.84



PRESS WATER ELBOW LUGGED

CODE	SIZE	PRICE
8626	15mm x 15FI	\$13.69
8598	20mm x 15FI	\$16.71
8627	20mm x 20FI	\$19.53



BLOCKHEAD PRESS WATER ELBOW LUGGED (90MM)

CODE	SIZE	PRICE
8699	15mm x 15MI	\$16.76



PRESS WATER ELBOW FI

CODE	SIZE	PRICE
8629	15mm x 15FI	\$15.14
8630	20mm x 20FI	\$18.33



PRESS WATER ELBOW MI

CODE	SIZE	PRICE
8631	15mm x 15MI	\$14.59
8632	20mm x 20MI	\$18.34



PRESS WATER ELBOW UNION

CODE	SIZE	PRICE
8687	15mm x 1/2"	\$9.26
8688	20mm x 3/4"	\$13.98



PRESS WATER ADAPTOR MI

CODE	SIZE	PRICE
8633	15mm x 15MI	\$7.11
8680	15mm x 20MI	\$10.87
8691	20mm x 15MI	\$12.99
8634	20mm x 20MI	\$11.76
8635	25mm x 25MI	\$21.03



PRESS WATER ADAPTOR FI

CODE	SIZE	PRICE
8636	15mm x 15FI	\$6.75
8637	20mm x 20FI	\$8.62
8638	25mm x 25FI	\$15.36



PRESS UNION

CODE	SIZE	PRICE
8685	Loose Nut 15mm x 15mm Press (Flat Seat)	\$11.90
8679	Loose Nut 20mm x 20mm Press (Flat Seat)	\$13.38

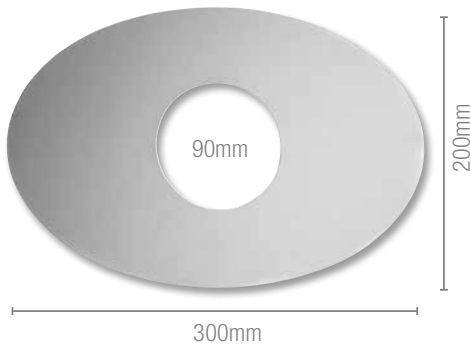


PRESS UNION

CODE	SIZE	PRICE
8696	Loose Nut Compression 15mm x 15mm Press	\$10.47
8689	Loose Nut Compression 20mm x 20mm Press	\$10.80

NEED TO TIDY UP SOME WE'VE GOT YOU

SHOWER MIXER FIXER

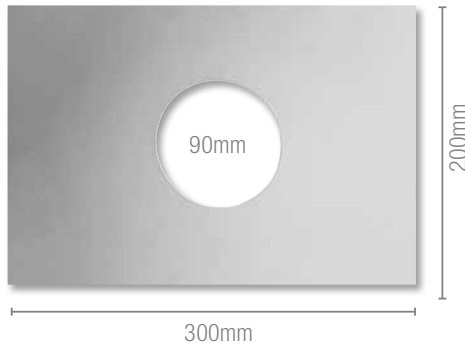


OVAL COVER PLATE CHROME

- Replace shower mixers with ease
- Fits all mixers
- Chrome plated brass

OVAL | Pack Qty 1 | Code 2987

\$96.⁸⁵



RECTANGLE COVER PLATE CHROME

- Replace shower mixers with ease
- Fits all mixers
- Chrome plated brass

RECTANGLE | Pack Qty 1 | Code 2983

\$99.⁴⁴



Powder coated black metal. Professional architectural finish

- Fits all mixers
- 90mm Hole
- 300mm x 200mm

RECTANGLE | Pack Qty 1 | Code 2993

\$144.²⁶

NEW

WHITE PLASTIC RAISED COVER PLATE

- OD 100mm
- For a professional finish inside the cupboard



40mm

Pack Qty 10
Code 2023
\$19.23ea



50mm

Pack Qty 10
Code 2024
\$19.23ea

TILES? COVERED.



TILER'S BOO BOO

- Chrome plated brass
- For use behind tap flanges



90mm Square

Pack Qty 1 | Code 6170 | \$17.97ea

TILER'S BOO BOO

TILER'S BOO BOO

- Chrome plated brass
- For use behind tap flanges

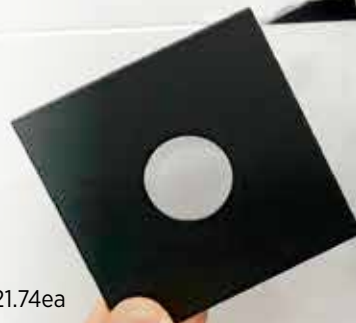


90mm Round

Pack Qty 1 | Code 4012 | \$16.27ea

TILER'S BOO BOO

- Powder coated black metal
- Professional architectural finish.

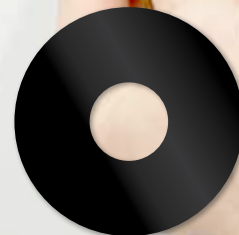


90mm Square

Pack Qty 1 | Code 6172 | \$21.74ea

TILER'S BOO BOO

- Powder coated black metal
- Professional architectural finish.



90mm Round

Pack Qty 1 | Code 6173 | \$21.22ea

DISHWASHER COVER PLATES

- Leaves a neat finish in the cupboard
- Keeps pests out
- Fits over the solenoid valve

Code: 1792

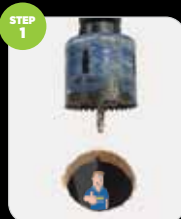


MULTI-PURPOSE COVER PLATE

Suitable for Washing Machines & Dishwashers

- Leaves a neat finish in the cupboard
- Covers a hole in the cupboard up to 120mm x 115mm
- Keeps pests out
- Fits hot & cold hoses, power cord. Optional outlet hose cap

Code: 1796



SPECIALS

TOP ASSEMBLIES

TAPWARE
NOW
INCLUDING

WOMBAT
PREMIUM TAP VALVES



BASIN SET

- EZ Clean Anti-Vandal C/P
- Complies with Australian Standards
- WELS Rated

Code: 3700

ONLY
\$60.00
INC. GST



BASIN TOP ASSEMBLY

- EZ Clean Anti-Vandal C/P
- Complies with Australian Standards
- WELS Rated

Code: 3707

ONLY
\$27.50
INC. GST



WALL TOP ASSEMBLY CERAMIC DISC

- EZ Clean Anti-Vandal C/P
- Complies with Australian Standards
- WELS Rated

Code: 3710

ONLY
\$55.00
INC. GST

WITH
CERAMIC
DISC



WALL TOP ASSEMBLY

- EZ Clean Anti-Vandal C/P
- Complies with Australian Standards
- WELS Rated

Code: 3704

ONLY
\$27.50
INC. GST

Valid until 30th June 2023



AW AUSTWORLD

Same day delivery for Sydney and Melbourne Metro

PEX BAG

No more wrestling with coils

- Made from Rip Stop Vinyl
- Protects pipe from cuts and abrasions
- Protects coils from UV damage
- Comes with sturdy carry handle
- Suits up to 100m x 16mm Coil
- Suits up to 50m x 20mm Coil

Code: 8008

DESIGNED &
TESTED BY
AUSTRALIAN
PLUMBERS



**HEAVY
DUTY ZIP**



**STURDY
CARRY HANDLE**

**NO
MORE
MESSY TANGLED
COILS ONSITE OR
IN THE UTE**





PEX CLIPS

PRICES INC. GST

BAG QTY
100



PEX SADDLES MASONRY NAIL

16mm | Code: 9054
\$27.47
20mm | Code: 9055
\$29.18

BAG QTY
100



DUALPEX MASONRY NAIL

• 16mm to 20mm
Code: 5559
\$35.54

BAG QTY
100



DUALPEX WITH TAB MASONRY NAIL

• 16mm to 20mm
Code: 5551
\$39.80

BAG QTY
100



DUALPEX TWISTED NAIL

• 16mm to 20mm
Code: 7895
\$39.85

BAG QTY
100



DUALPEX TIMBER SCREW

• 16mm to 20mm
Code: 5568
\$39.56

BAG QTY
100



DUALPEX NYLON ANCHOR MASONRY NAIL

• 16mm to 20mm
Code: 7896
\$41.11

BAG QTY
100

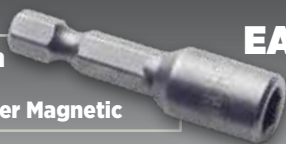


PEX SADDLES NYLON ANCHOR MASONRY NAIL

16mm | Code: 7898
\$32.92
20mm | Code: 7899
\$34.08

NEW

1/4 inch
42mm
Nut Setter Magnetic



EACH HEX HEAD BAG
COMES WITH A

FREE

DRIVER BIT

BAG QTY
100



PEX SADDLES HEX HEAD SD SCREW

• 16mm
Code: 9075 **\$35.49**

BAG QTY
100



PEX SADDLES HEX HEAD SD SCREW

• 20mm
Code: 9076 **\$36.43**

BAG QTY
100



DUALPEX HEX HEAD SD SCREW

• 16mm to 20mm
Code: 5577 **\$39.88**

BAG QTY
100



DUALPEX W/TAB HEX HEAD SD SCREW

• 16mm to 20mm
Code: 5578 **\$42.70**

INFLATABLE TEST PLUG 50mm

- To suit 50mm PVC
- 1.5m hose w/ Schroeder Valve
- Inflate with car pump

Note: Internal Pipe Size 45mm to 60mm, Max Inflation 10psi, (68kpa) with Schroeder Valve

Code: 9006

\$107.80



INFLATABLE TEST PLUG 150mm

- To suit 150mm PVC
- 1.5m hose w/ Schroeder Valve
- Inflate with car pump

Note: Internal Pipe Size 140mm to 160mm, Max Inflation 7psi, (48kpa) with Schroeder Valve

Code: 9007

\$176.00

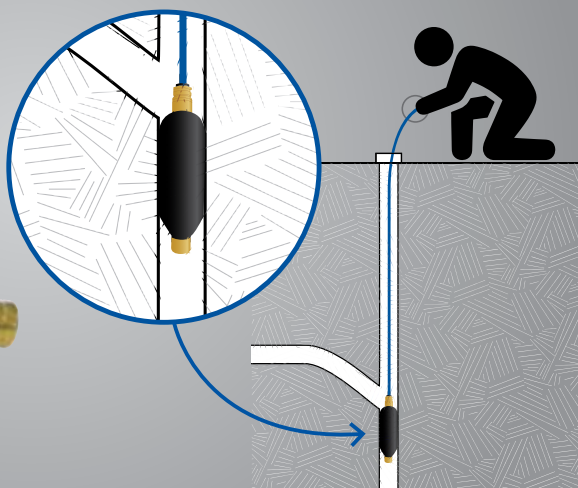


INFLATABLE TEST PLUG 100mm - 150mm

- Size 100mm-150mm
- Also known as Pneumatic test plug
- Can be lowered into drain

Code: 9003

\$197.43



EXTENSION HOSE

TO SUIT INFLATABLE TEST PLUG

- 1.2m length (4ft)

Code: 9004

\$55.52



TEST PLUG ALUMINIUM 100mm

- A breeze to install
- 2 convenient tie-off points
- Size 100mm

Code: 2149

\$52.84



TEST PLUG RIGHT ANGLED WITH HANDLES 100mm

- Keeps hands out of the drain
- A breeze to install
- Cannot be lost down drain
- The only plug to use when testing at a right angled junction
- Cast Aluminium
- Patented

Code: 2004

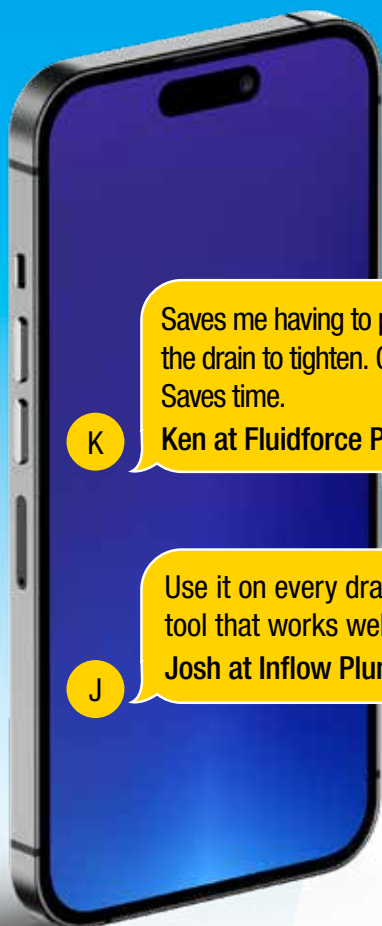
\$153.16



CHS CHRIS HUNTER
SALES



Jacko's Review



Saves me having to put my hand down the drain to tighten. Can't lose it either. Saves time.

K

Ken at Fluidforce Plumbing

Use it on every drain. Great handy tool that works well - very happy with it.

J

Josh at Inflow Plumbing Solutions

Valid until 30th June 2023

NOW
\$99.00

SAVE \$45.34

CODE: 2009



INFLATABLE TEST PLUG

- Equipped with 2.5m hose
- To suit 100mm PVC
- Inflate with car pump
- Can be used down an inspection shaft

100mm

**DON'T TAKE
THE RISK!
REACH
FOR THE
GULLY
GRABBER**

GULLY GRABBER

The Gully Grabber is designed to remove hazards and blockages safely

- Extends up to 2 metres
- Stores in a handy 600mm tube
- Genuine Plumtool
- Patented

\$278.26 INC. GST

Code: 2610

EXTENDS
UP TO
2M

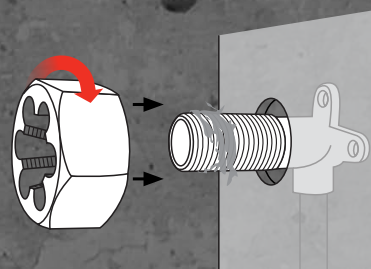


plumtool™

FRANZ TAP & DIE KIT

The handy kit for

- Straightening and cleaning threads
- Fixing crossed threads
- Cleaning out tap bonnet



\$253.34

Code: 2101



Kit contains:

- 1/2 inch BSP Franz nut
- 1/2 inch BSP Franz tap
- 3/4 inch BSP Franz nut
- 3/4 inch BSP Franz tap
- Franz Spindle Cleaner
- Franz Bonnet Cleaner T Handle
- Franz Nut 10mm Rod

plumtool™



TRUSTED BRAND

HIGH PERFORMANCE FLEXIBLE MS SEALANT AND ADHESIVE

GREY Code: 8225 • **WHITE** Code: 9845 • **BLACK** Code: 8226



- UV resistant, absorbs acoustic and mechanical vibrations
- Highly flexible with up to 400% elongation
- Sticks and seals all common building materials, even in the wet
- Contains zero solvents and is non-bubbling
- +/-25% cyclic expansion and low VOC
- Interior and exterior use



BOSTIKTRADE



BOSTIKTRADE



BOSTIKAUSTRALIA

bostik.com



ROOF & GUTTER SILICONE



TRANSLUCENT 300g



- Bostik Quality
- Ideal for sealing sheet metal, roofing & guttering
- Potable water approved AS4020-1999
- Neutral Cure
- Non-Corrosive

**BOX
20**

Code: 9926

GREY 300g



- Bostik Quality
- Ideal for sealing sheet metal, roofing & guttering
- Potable water approved AS4020-1999
- Neutral Cure
- Non-Corrosive

**BOX
20**

Code: 9953

BLACK 300g



- Bostik Quality
- Ideal for sealing sheet metal, roofing & guttering
- Potable water approved AS4020-1999
- Neutral Cure
- Non-Corrosive

**BOX
20**

Code: 9812

NEW!

PATENTED

BAL RATED DRAINAGE VENT & FLASHING KIT

Kit includes:

- Steel vent and cowl
- BAL rated flashing to suit steel roof
- Steel to PVC insulated adaptor

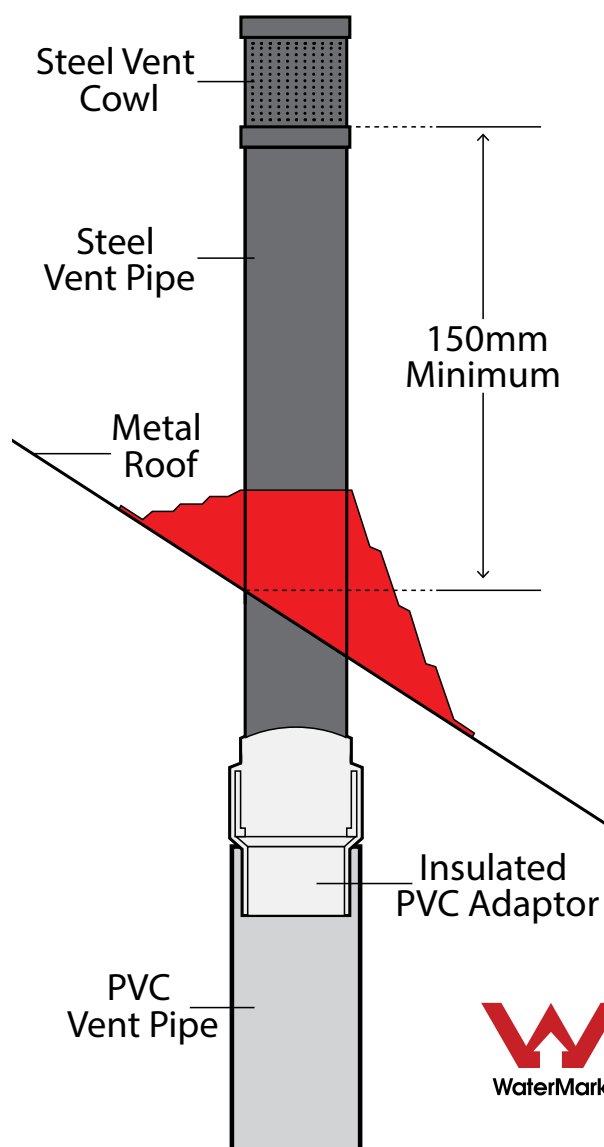
BAL12.5
Black Flashing Kit

Code: **8876**



BAL29
Red Silicone Kit

Code: **8877**



EXTENDO

GAS CONNECTOR

F + F NOW AVAILABLE



Extendable
from **650mm**
to **1200mm**



- ✓ Saves Space, **ONE Connector** does it all!
- ✓ 12mm internal bore for better gas flow
- ✓ Flame resistant stainless steel
- ✓ AGA Approved 8633G
- ✓ 1/2" M+F
- ✓ 1/2" F+F

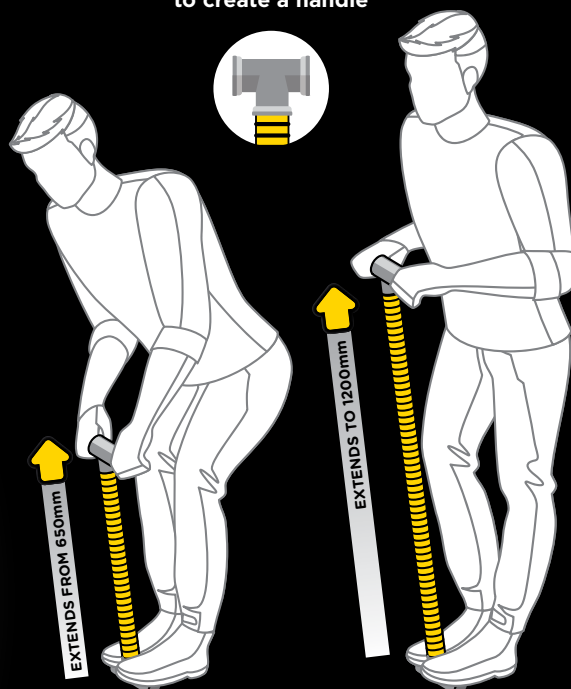


BOX
10

\$246.78 INC. GST

M+F Code: 6176
F+F Code: 6178

HANDY TIP:
Attach a brass tee to either end
to create a handle



water TESTING

Flow Rate Cup Tester

- Scale measures flow rates of 0 to 17 litres per minute
- Measure water flow rates to determine if suitable flow is available prior to plumbing installation



\$38.67
INC. GST

Code 7276

Plumtest Thermometer Digital

- Measures temperatures from -50 degrees to 200 degrees Centigrade.
- It is perfect for checking the out flow temperature of hot water units, thermostatic mixers and tempering valves.
- Includes battery



\$43.67
INC. GST

Code 1324

Plumtest Test Bucket

- For pressure testing water systems are sealed and free from leaks
- Reliable and accurate test results
- Suitable for residential or commercial use

- 12L Solid Steel Bucket
- Quality 2 valve system

Kit includes:

- 1.5m long hose
- 4 spare washers

Code 9866



\$547.03
INC. GST

Plumtest Water Pressure Tester on Hose 2500 Kpa

- Universal brass connector will fit to 1 inch or 3/4 inch BSP thread
- Glycerin filled gauge protects workings
- High pressure hose allows flexibility to make reading gauge easier
- Dual scale reads in both KPa and PSI

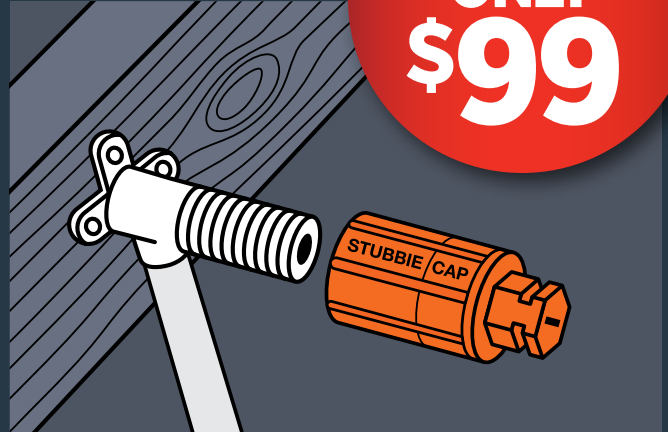
Code 1119



\$98.24
INC. GST

SPECIAL

STUBBIE TEST CAP



BULK PRICE

BAG OF 100

ONLY

\$99

- Easier to install cabinets
- Can be removed with screw driver or shifter
- Safer high visibility
- Available in a bag of 100

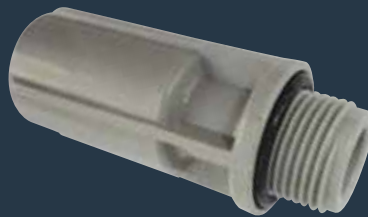
\$1.55 each
INC. GST
Code: 4803



TEST CAP 1/2 INCH

- Size 1/2 inch
- Female
- Fast cap for testing at rough in stage

\$1.66 each
INC. GST
Code: 5051



TEST PLUG DUO GREY

- Duo plug and cap combination
- For testing hot and cold water installations
- One product does both plug and test cap

\$2.77 each
INC. GST
Code: 5052



TEST CAP DRAINABLE

- Small removable plug for easy drainage of water line
- Eliminates spilling inside wall cavity

\$2.61 each
INC. GST
Code: 5053

**NOW
AVAILABLE**

COPPER COILS

- Copper tube to be dispatched from Brisbane
- **Quality Guaranteed:** Copper tube is certified to comply with AS1432 - copper tube for plumbing, gas fittings and drainage applications



3/4 INCH

19mm x 1.02 x 18m
Annealed Type B

\$276.43 inc. GST

Per 1. Minimum order of 2

CODE: 7801



1/2 INCH

12mm x 0.91 x 18m
Annealed Type B

\$141.68 inc. GST

Per 1. Minimum order of 3

CODE: 7800



1/2 INCH

12mm x 1.02 x 18m
Annealed Type A

\$159.50 inc. GST

Per 1. Minimum order of 3

CODE: 7802

COPPER ROUNDING TOOL

NEW

3/4" \$55.64 inc. GST

Code: 9898

Suitable for 3/4" copper tube

1/2" \$52.88 inc. GST

Code: 9988

Suitable for 1/2" copper tube

- Saves time
- Nuts slide on easily
- Great frustration saver
- Lightweight and compact

**ROUNDS
OUT
COPPER IN
SECONDS!**



plumtool™

Innovative tools for **PLUMBERS**

- For a professional finish inside the cupboard.
- Flexy Flange cupboard plate fits tight to pipe which makes it ant-proof.

1 Flexy Flange Fits 4 Sizes!



Small

Pack Qty 10

\$24.22 INC. GST

Code: 8250

PATENTED

Suits 9-22mm pipe

80mm



Medium

Pack Qty 5

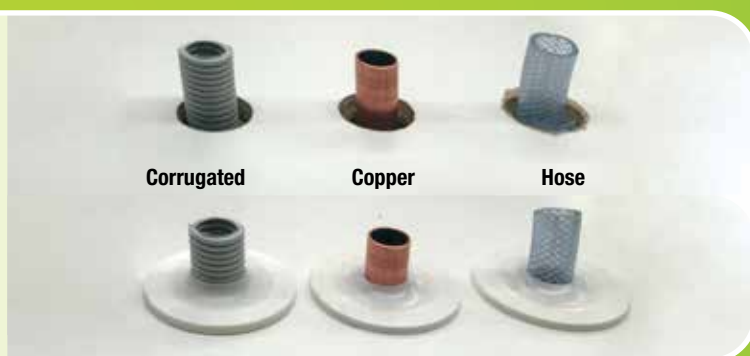
\$16.09 INC. GST

Code: 8252

PATENTED

Suits 22-44mm pipe

90mm



Large

Pack Qty 5

\$17.92 INC. GST

Code: 9968

PATENTED

Suits 40-60mm pipe

105mm



Rectangle

Pack Qty 5

\$23.83 INC. GST

Code: 2202

PATENTED

Suits 40-60mm pipe

115mm

170mm





SORTING BIN STACK ABLE

LARGE

\$25.41
INC. GST

Can be divided
into 3 with
Divider

Code: 2690



420 x 370 x 175mm

MEDIUM

\$17.27
INC. GST

Can be divided
into 2 with
Divider

Code: 2686



210 x 370 x 175mm

DIVIDER

\$3.30
INC. GST

Used to divide
storing bins to
create extra
storage

Code: 2692



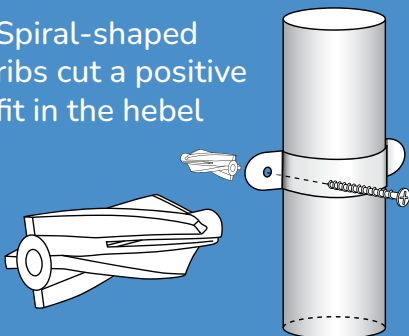
- Ideal for sorting and organising small fittings
- Sorting bins can be stacked on top of each other or side by side
- Bins include 4 pegs for stacking



down pipe
fixing can
be tricky,
**but we
have the
answers**

Hebel Anchor

Spiral-shaped
ribs cut a positive
fit in the hebel



*Spiral shaped
ribs lock into
Hebel*

8mm

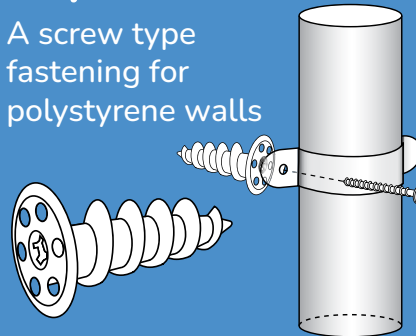
\$71.50
INC. GST

CODE 1295

BAG QTY: 50

Styroscrew

A screw type
fastening for
polystyrene walls



*Great for fixing
downpipes
to foam walls*

\$70.29
INC. GST

CODE 1223

BAG QTY: 50

Wall Plugs

Tapered end
Green



35mm x 6.5mm

\$12.55
INC. GST

CODE 9934

BOX QTY: 50

35mm x 6.5mm

\$63.62
INC. GST

CODE 9168

BOX QTY: 500

Black Nylon Tap Ins



UV stabilised for outdoor use
Galvanized nail will not rust

5mm x 40mm

\$114.41
INC. GST

CODE 1187

BOX QTY: 500

5mm x 25mm

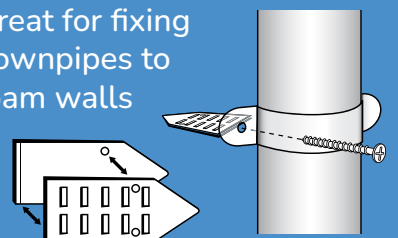
\$81.76
INC. GST

CODE 9524

BOX QTY: 500

Styrowedge

Great for fixing
downpipes to
foam walls



\$58.42
INC. GST

CODE 1222

BAG QTY: 50

PLUMBER SPOT LIGHT



**14
YEARS**
INDUSTRY
EXPERIENCE

Robert Shipway

**HELLO
PLUMBING**
BELROSE, NSW

How did you get into plumbing?

My grandfather worked for Sydney Water for 30 years as a draftsman, and my dad was an auto-electrician so being a tradie was always on the cards. Plumbing looked like a good option.

What made you start your own business, and what advice would you pass on to the next generation?

I broke my neck and was stuck at home for 9 months. Rather than sit around and play video games I started researching and putting together a business plan so that when I was on my feet I was ready to go. I still look back to the plan now to stay on track. Having a good business plan, and processes and procedures in place make all the difference in succeeding.

What positive changes have you seen in the industry over your journey?

The exploding growth of new businesses. Technology and supplier support has made starting a trade business easier than ever before.

What problems do you face in the current market?

Finding loyal and talented staff. Good plumbers, who can provide a high level of customer service. The increasing cost of business and the customer attitudes towards those increases is also difficult.

Why do you use Plumbers Choice?

Same day delivery is a massive one. Waiting on stock is a pet peeve of mine. Plumbers Choice has always been fair and approachable, and the website ease of use is great.

What are your thoughts on "Trade Only"?

I love the idea of Trade Only, only licensed tradies should be doing the work. There are so many potential risks when people do their own work; floods, fire, etc. And it increases the cost of insurance.

**TIP OF
THE
MONTH**

We'll tip
YOU
when you tip
US!



Every featured story receives a
\$200 Store Credit

When making a sharper than 90 degree bend with internal bending springs. Put a little bit of RedBack Tap Lube on the spring which allows the spring to be reversed out with a cordless drill.

Courtesy -
Alan Sheldon



Thanks mate, we'll be sending you \$200 store credit

To get involved send us an email info@plumberschoice.com.au



TIGHTEN BASIN & SINK MIXERS FAST



Extra long
sockets (120mm)

**IDEAL
FOR TIGHT
SPACES**

FLEXIBLE MIXER TAP DRIVER KIT

\$119.20
INC. GST

Code: 9828

Kit Contains:

- 3/8 Flexible Drive (200mm long)
- 3/8 Hex Adaptor (40mm long)
- 3/8 Drive Socket Set:
9mm x 120mm, 10mm x 120mm, 11mm x 120mm,
12mm x 120mm, 13mm x 120mm

NIPPLE CUTTER & CATCHER



CREATE THE PERFECT SEALING SURFACE

- Single piece shaft results in less chattering
- Provides the perfect sealing surface
- Create a flat or chamfered end on the nipple



\$106.51
INC. GST

Code: 9231

**NEW
CLEAR
CATCHER**

plumtool™

Innovative tools for **PLUMBERS**

BACK IN STOCK

**AVOID A
SHOCKING
EXPERIENCE!**



BONDING STRAP



Always use when disconnecting
or cutting a gas or water pipe
Industrial Plumtest quality cable
and clamps

Clamp Capacity - 8mm to 32mm

Cable 1400mm long x 16mm

Rated to 200AMPS

Comply with AS3500.1 2003

Code: 1527



Combo Digital Gas Manometer



- Operating Range 0 kPa to 10 kPa
- Accuracy 0.5% over Operating Range
- Operating Temperature -10°C to 95°C

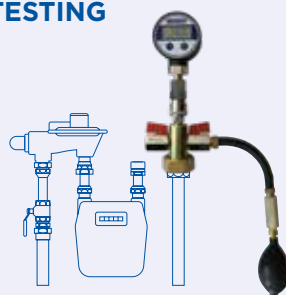
Kit contains:

- Digital Gauge with click on connection
- 700mm Rubber Hose with click on connection
- Testing Tee with click on connection
- Hand Bellows

Code: 1826

One kit does two jobs

GAS LINE TESTING



APPLIANCE TESTING

