

# plumbers choice

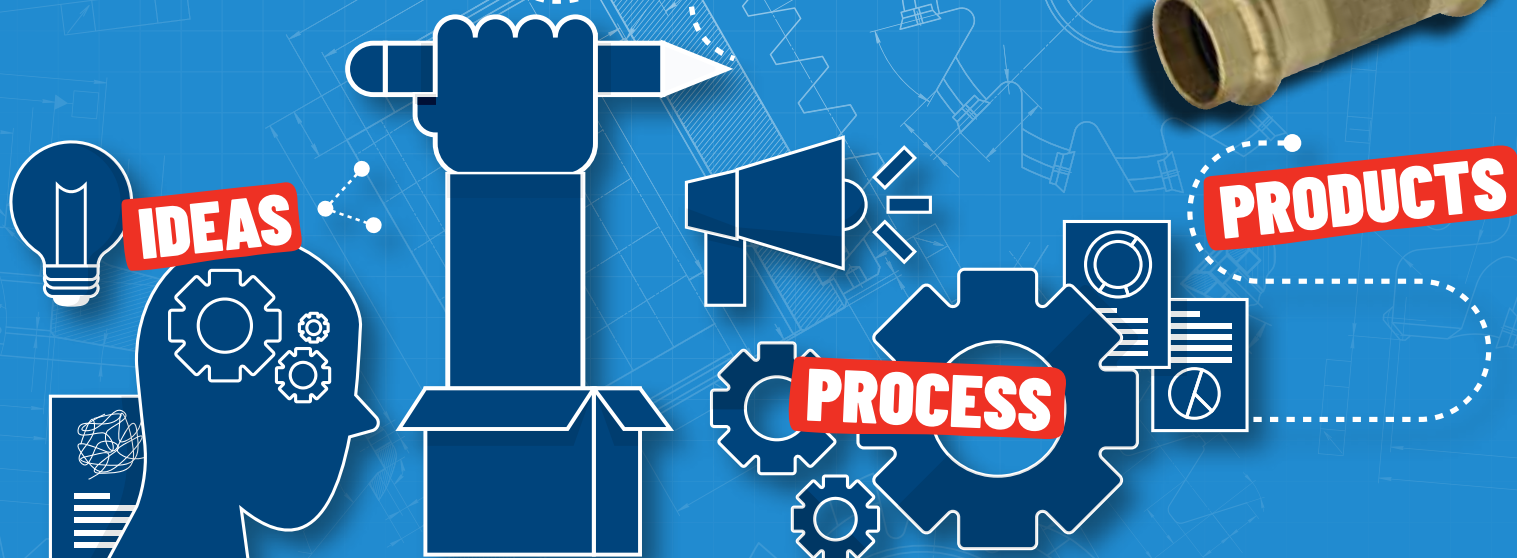
**TRADE  
ONLY**

**PLUMBERS CHOICE**

**CONTINUING TO**

**INNOVATE**

**THE PLUMBING  
INDUSTRY**



489 Mountain Highway, Bayswater, VIC 3153

Email: [info@plumberschoice.com.au](mailto:info@plumberschoice.com.au) • Ph: (03) 9720 8274

[www.plumberschoice.com.au](http://www.plumberschoice.com.au)



# Luke's Editorial



At Plumbers Choice we are proud to offer the freshest and best new innovations to the plumbing industry. You could say it is part of our DNA. In the past 8 months we have introduced some gems.

In case you missed them here is a quick summary. All seven innovations listed have had significant support from our Trade Only customers.

My personal favourite is the new **Cylinder Strap**. Why didn't someone invent this 25 years ago? How many backs would have been saved? ●-----

**LUKE BOLTON**  
DIRECTOR, PLUMBERS CHOICE

**plumbers**  
**choice** TRADE ONLY

## Plumtool Flexible Mixer Tap Kit

Fits in your battery drill and gets you into tight places



**SEE PAGE 4**

## Press Slip Tee 20mm

GENIUS! The name says it all!

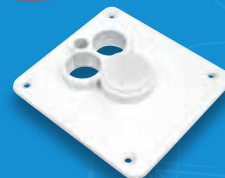


**SEE BACK PAGE**

## White Washing Machine Cover Plate

For a professional finish.

**SEE PAGE 23**



## Cover Plate For Corrugated Walls

Finally a solution for corrugated walls



**SEE PAGE 22**

## PVC Auto Cutters

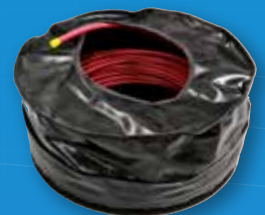
Quick clean cut in confined spaces



**SEE PAGE 20**

## Nipple Cutter with Clear Catcher

The new clear catcher is the best thing since... the invention of the nipple cutter.



**SEE PAGE 4**

## Pex Bag

Protect your pex. Allows for easy dispensing

**SEE PAGE 3**

**SEE PAGE 32**  
FOR MORE DETAILS



## HOW TO ORDER



**Online - 24 hours**  
[www.plumberschoice.com.au](http://www.plumberschoice.com.au)



**Email - 24 hours**  
[sales@plumberschoice.com.au](mailto:sales@plumberschoice.com.au)



**Phone - Business Hours**  
(03) 9720 8274  
Our knowledgeable staff will take your order.



**At our Trade Outlets**  
Monday - Friday  
489 Mountain Highway, Bayswater, VIC 3153  
4/200 Woodpark Road, Smithfield, NSW 2164

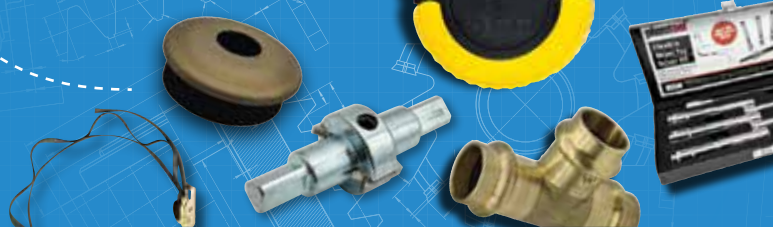


**Personal Sales Rep**  
Your personal Sales Representative is able to tailor our service to suit your needs.



**Shop Trade Only from the palm of your hand!**





# PEX BAG

## No more wrestling with coils

- Made from Rip Stop Vinyl
- Protects pipe from cuts and abrasions
- Protects coils from UV damage
- Comes with sturdy carry handle
- Suits up to 100m x 16mm Coil
- Suits up to 50m x 20mm Coil

Code: 8008

DESIGNED &  
TESTED BY  
AUSTRALIAN  
PLUMBERS



**NO MORE  
MESSY TANGLED  
COILS ONSITE OR  
IN THE UTE**



**HEAVY  
DUTY ZIP**



**STURDY  
CARRY HANDLE**



PLUMBERS CHOICE  
CONTINUING TO  
**INNOVATE**

THE

PLUMBING  
INDUSTRY



## FLEXIBLE MIXER TAP DRIVER KIT

**\$119.20**  
INC. GST

Code: 9828

## TIGHTEN BASIN & SINK MIXERS FAST



Extra long  
sockets (120mm)

**IDEAL  
FOR TIGHT  
SPACES**

### Kit Contains:

- 3/8 Flexible Drive (200mm long)
- 3/8 Hex Adaptor (40mm long)
- 3/8 Drive Socket Set:  
9mm x 120mm, 10mm x 120mm, 11mm x 120mm,  
12mm x 120mm, 13mm x 120mm

## NIPPLE CUTTER & CATCHER



### CREATE THE PERFECT SEALING SURFACE

- Single piece shaft results in less chattering
- Provides the perfect sealing surface
- Create a flat or chamfered end on the nipple



**\$106.51**  
INC. GST

Code: 9231

**NEW  
CLEAR  
CATCHER**

**plumtool™**

*Innovative tools for* **PLUMBERS**



# BULK SPECIAL

## TEFLON BOXES

**PINK**

• 100 rolls

Code: 9011

**\$110.00 inc GST**

**YELLOW**

• 100 rolls

Code: 9010

**\$137.50 inc GST**

**WHITE**

**RED BACK**

• 200 rolls

Code: 9012

**\$137.50 inc GST**

**GREY**

**RED BACK**

• 100 rolls

Code: 1546

**\$165.00 inc GST**



Valid until October 31st 2022



## HIGH PERFORMANCE FLEXIBLE MS SEALANT AND ADHESIVE

**GREY** Code: 8225 • **WHITE** Code: 9845 • **BLACK** Code: 8226



- UV resistant, absorbs acoustic and mechanical vibrations
- Highly flexible with up to 400% elongation
- Sticks and seals all common building materials, even in the wet
- Contains zero solvents and non-bubbling
- +/-25% cyclic expansion and low VOC
- Interior and exterior use

## SEAL'N'FLEX ONE PLUS P590

LOW MODULUS  
POLYURETHANE SEALANT



• Code: 8230 •



### TOP SPECS. CONSTRUCTION SEALANT FOR EXPANSION AND DILATION JOINTS

- Extremely elastic, > 1000% elongation at break
- Capable of filling joints up to 80mm
- Ultimate UV resistance
- Hazard label-free
- Zero bubbling
- Adheres to damp surfaces
- Wet tooling
- Water potable
- Green Building Specification
- Suitable for flashings, concrete, fiber cement, wood, brickwork, mortar, metal, aluminum, facades etc



BOSTIKTRADE



BOSTIKTRADE



BOSTIKAUSTRALIA

bostik.com





**30% MORE  
EFFICIENT THAN  
STANDARD BLADES**

**CUTS STRAIGHT  
EVERYTIME**

**BATTERIES  
LAST LONGER**

**CUT IS FREE  
OF BURRS**

**AVAILABLE IN A  
BOX of 10**

**SPECIAL**

**\$19.51**  
INC GST

**SAMURAI RECIPROCATING  
SAW BLADE PVC**

• 210mm • 16TPI • Made in Japan

**CODE: 9632**

**SPECIFICALLY  
DESIGNED FOR  
CUTTING  
PVC**



"Where were these blades 5 years ago – they are the **strongest and sharpest blades I've used**, all cuts are dead straight and it's very handy in tight spaces. I haven't bothered using a PVC saw since I bought these. **Highly recommended!**"

– Liam Hornet Plumbing

# EXACTAPAK

• PROUDLY AUSTRALIAN MADE •



## The authentic all Australian Exactapak is designed for the Australian Professional Plumber

The Exactapak keeps plumbing essentials organised, easily accessible and ready to transport to the next job.



Contents not included

— THE —  
ORIGINAL &  
THE BEST!

### Exactapak Compact

L 400mm  
W 270mm  
H 100mm



**\$74.64**  
INC. GST  
Code: 5892

Multi  
6

### Exactapak Small

L 367mm  
W 176mm  
H 70mm



**\$102.77**  
INC. GST  
Code: 5891

Multi  
10

### Exactapak Large

L 484mm  
W 312mm  
H 62mm



**\$102.77**  
INC. GST  
Code: 5890

**100  
PIECE**

## Cistern washer kit

Far more cost effective than carded washers

Contains 11 types of the most common washers

- 7 x 9603 Cistern Washer Doulton Top Hat Old Style Ballcock
- 4 x Cistern Washer Brent New Style
- 3 x Cistern Washers Replacement Fluidmaster (242)
- 5 x Cistern Washer Gebrit Seating Silicone
- 7 x Cistern Washer Doulton Top Hat New Style Ballcock
- 25 x Float Valve Washers 1/2 Inch
- 5 x Cistern Washer Doulton Concave Suction
- 7 x Cistern Washer 'K' Seating
- 15 x Cistern Washer Caroma Seating Red Silicone
- 7 x Cistern Washer Doulton Seating
- 18 x Cistern Washer Caroma New Style Ballcock #2



**\$145.19**  
INC. GST  
Code: 6687



# WONDER JUICE



UNLIKE OTHERS  
**WONDER  
JUICE LID  
WON'T  
POP OFF**

New generation product for sealing and locking brass and steel threads.

Wonder Juice can be used as a replacement for teflon and hemp.

- No more leaks
- Rated up to 3000kpa
- Sets hard, so it will never work loose
- Heat range -50C to 150C
- Environmentally friendly/non-flammable
- SGS approved for drinking water and air lines
- AGA approved for use on NG, LPG, TG & LLPG



**SCREW  
CAP**



## RED BACK





**CONTACT  
PLUMBERS  
CHOICE FOR  
BULK ORDER  
PRICING!**



**\$770**  
INC. GST

**20 YEAR  
WARRANTY**  
**BAL CERTIFIED**



**\$495**  
INC. GST



**SPECIAL**



## AQUASEAL BLACK FLASHRITE #2 PRE-CUT

- Pull straight over 40mm to 50mm vent pipes

CODE	COLOUR	PIPE SIZE
1446	Black (EPDM)	40mm - 50mm

## FLASHRITE MINI BLACK

- Pull straight over 3mm to 20mm penetrations

CODE	COLOUR	PIPE SIZE
1420	Black (EPDM)	3mm - 20mm

**The only Australian Made flashing on the market**



**NEW!**

**PATENTED**

# BAL RATED DRAINAGE VENT & FLASHING KIT

## Kit includes:

- Steel vent and cowl
- BAL rated flashing to suit steel roof
- Steel to PVC insulated adaptor

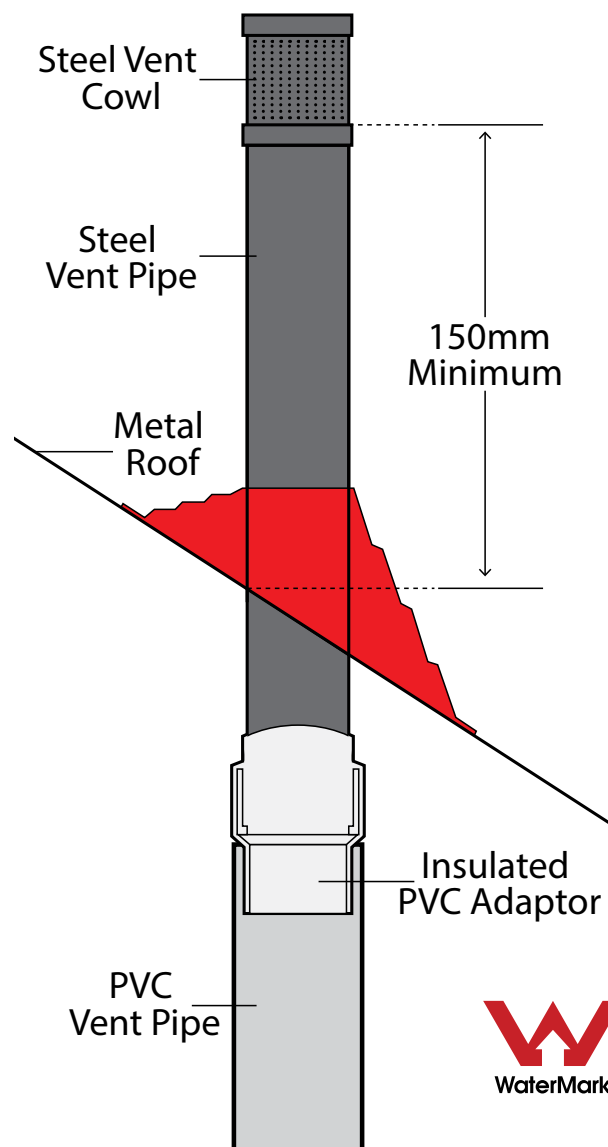
**BAL12.5**  
Black Flashing Kit

Code: **8876**



**BAL29**  
Red Silicone Kit

Code: **8877**





# Combo Digital Gas Manometer

**One kit does  
two jobs**

- Operating Range 0 kPa to 10 kPa
- Accuracy 0.5% over Operating Range
- Operating Temperature -10°C to 95°C

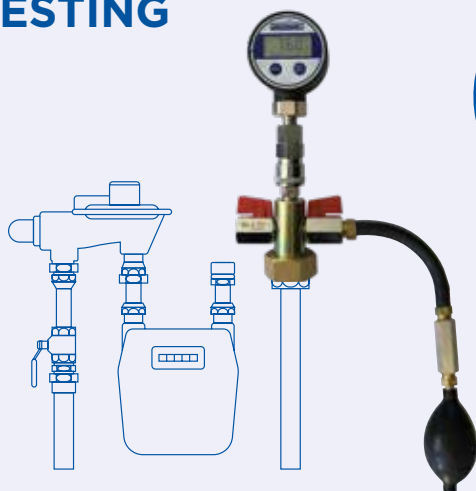
**Kit contains:**

- Digital Gauge with click on connection
- 700mm Rubber Hose with click on connection
- Testing Tee with click on connection
- Hand Bellows

Code: 1826

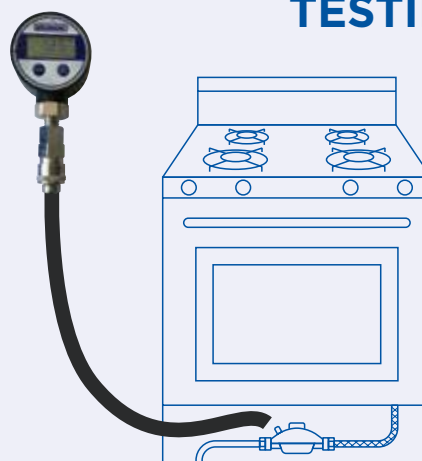


## GAS LINE TESTING



Click on connector

## APPLIANCE TESTING







DESIGNED BY  
Australian  
Plumbers

## EXTRA EASY INSTALL FEATURES BUILT-IN

# MONACO™

## Universal Cistern with Link and Seat

- Extra Easy Install Features Built-in
- 4.5/3L Dual Flush Technology
- Simple Flush Volume Conversion to 6/3L or 9/4.5L
- Plastic Cistern with Bottom Inlet
- UV Resistant - Certified
- Saves Water

CODE 2090



YEAR WARRANTY



WaterMark  
WM-022914  
AS 1172.2



### EQUIPPED WITH FLUIDMASTER TECHNOLOGY



Inlet Valve  
400UK063



Outlet Valve  
560AU02



# INLET VALVES

The Fluidmaster Inlet Valves are suited for side/rear entry toilet cisterns and water storage tanks.

CODE 2095

### Side Entry Cistern Inlet Valve

1/2" Plastic Thread

- Quick release system for easy maintenance
- Compact design
- Anti-siphon
- Quiet fill



CODE 2096

### Side Entry Cistern Inlet Valve

3/8" Brass Thread

- Quick release system for easy maintenance
- Compact design
- Anti-siphon
- Quiet fill



## Install with Confidence

- Low Level Flush Pipe Included
- 4.5/3L Dual Flush Technology
- Simple Flush Volume Conversion to 6/3L or 9/4.5L
- UV Resistant - Certified
- Plastic Cistern with Bottom Inlet
- Saves Water
- Cistern - 391mm H x 420mm D x 133mm W



## PRO SERIES® CISTERN with Link and Seat

**Most Powerful  
Flush System**

**\$109.10**

INC GST | CODE 2089



YEAR WARRANTY



WaterMark  
WM-022914  
AS 1172.2



# WOMBAT

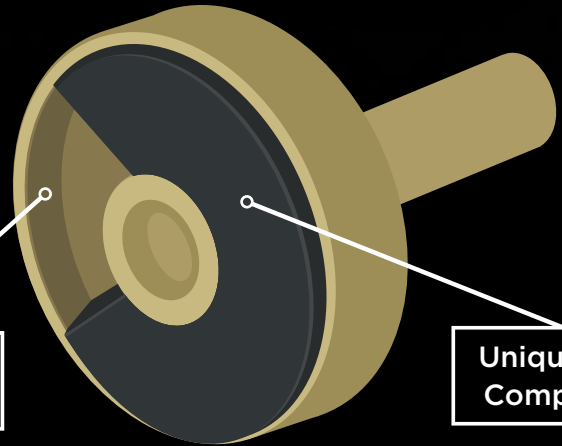
Australian Designed

Brass Shroud prevents spreading and splitting

Tough NP3 compound which is heat resistant and hard wearing

Passes 100,000 cycle test

Complies with AS3718



Protective Brass Shroud

Unique NP3 Compound

**10 Pack**  
Code: 8810

**100 Pack**  
Code: 8811



**PATENT  
PENDING**



## **PLUMTOOL BREECH STRAIGHTENER**

- For straightening tap breeches prior to fit off
- Reverse tool to straighten 1/2 B.S.P. lugged elbows
- Patented

Code: 2395

**\$63.07**  
INC. GST



## **PLUMTOOL TAP FLANGE REMOVER**

- Use with your hand to increase grip x 3
- Grips any shaped flange
- Use very carefully with round jaw multi-grips to remove stubborn flanges
- Be sure to grab the rubber on the flap area

Code: 8539

**\$18.47**  
INC. GST



## **PLUMTOOL LONG NOSE PLIERS**

- 270mm long, twice the reach of standard pliers
- Will remove tap washers from even the deepest breeches
- Thin profile to fit into tap bodies

Code: 1667

**\$45.05**  
INC. GST





**PLUMTOOL  
FRANZ NUT  
SPINDLE CLEANER**

- For cleaning threads on standard tap spindles
- Much cleaner and easier to use than a wire brush.

Code: 9854

**\$44.99**  
INC. GST



**PLUMTOOL  
FRANZ BONNET CLEANER  
T HANDLE**

- For cleaning and straightening the internal thread of tap spindles

Code: 2006

**\$36.66**  
INC. GST



**RED BACK  
TAP LUBRICANT**

- Approved for potable water
- Working range of between -10°C and 150°C

Code: 9996

**\$18.08**  
INC. GST



**BODY  
WASHERS  
RED FIBRE  
EZ CLEAN**

- For standard taps
- Thin washer for installation of bells
- 23mm ID x 28 OD

Bag of 50

**\$15.44**  
INC. GST

Code: 9449



**O RINGS NO.8.5**

- For standard tap repairs
- Number 8.5

Bag of 100

**\$15.15**  
INC. GST

Code: 9164



**TAP RESEATER -  
FACE & EDGE  
CUTTER**

- Removes sharp edges on seats so valves will not stick or tear

**\$91.81**  
INC. GST

Code: 2359



**HYDROSEAL TAP  
RESEATER**

- Genuine Hydroseal product

**\$60.17**  
INC. GST

Code: 2005



**HYDROSEAL  
CUTTER  
1/2 INCH  
TUNGSTEN**

- Replacement cutting head for tap reseater

**\$93.13**  
INC. GST

Code: 2499



**PLUMTOOL  
SPINDLE ACCESS DRILL**

- Cuts tiles to allow access to tap body
- Diamond core drill will cut even the hardest of porcelain tiles
- Nylon bush prevents damage to the spindle
- Patented

Code: 1916

**\$193.45**  
INC. GST



**STRONGEST  
ON MARKET**

**PLUMTOOL  
TUBE SPANNER KIT**

- Will not round out under stress
- Kit Contains:  
Hex 20mm x 21mm,  
Hex 22mm x 23mm,  
Hex 29mm x Square 24mm,  
Hex 25mm & Hex 28mm,  
Turning Bar 230mm
- Made in Germany

Code: 2513

**\$191.44**  
INC. GST



**PLUMTOOL  
TAP HANDLE PULLER**

- Unique shroud stops slipping
- Holes in arms allow for removal of ezy clean handles
- A must for maintenance plumbers

Code: 1758

**\$72.44**  
INC. GST

## PLUMBER SPOT LIGHT



**20+  
YEARS  
INDUSTRY  
EXPERIENCE**

**KYLE  
SKALICKY**

Jetty Plumbing  
COFFS HARBOUR, NSW

### What made you become a plumber?

I came from a long line of plumbers. My Grandfather, dad, and older brother were all plumbers so I guess I was just born with shit in my veins.

### What positive changes have you seen in the industry over your journey?

The technology in apps, programs, and tools and materials. Also the attitude of the tradesman and the training of apprentices is getting better.

### What problems do you face in the current market?

Price rises on supplies are always troublesome. Finding decent tradesmen is always a hurdle for us. We need more good plumbers! If you are one please call Kyle @ Jetty Plumbing ;) or look for our job ad on seek.

### Why do you use Plumbers Choice?

Competitive pricing is a good start but the great customer service from guys with knowledge of the industry and with a sense of humour keep me coming back. Love these legends. The great warranties and next day delivery is important and amazing.

### What are your thoughts on "Trade Only"?

It's great, protects the plumbers. I hate when the customers compare pricing at Bunnings and it's cheaper than what I can get at the local suppliers. No one compares their schooner at the pub with Dan Murphys.

### Any advice for the next generation of plumbers?

Find the good bits, the silver lining while in a trench full of shit. It's the little things that make the day great.

**TIP OF  
THE  
MONTH**

We'll tip  
**YOU**  
when you tip  
**US!**

Every featured story receives a  
**\$200 Store Credit**

**ONLY  
TAKES  
2  
MINS!**

Use a 300mm epanda to  
do a cut into an existing  
line. Take 2 minutes and  
far more permanent than  
a rubber repair coupling

Courtesy Ben  
- Ben Goding Plumbing



Thanks mate, we'll be sending you \$200 store credit

To get involved send us an email [info@plumberschoice.com.au](mailto:info@plumberschoice.com.au)



## SANITARY PUMPS



### Hyjet Sololift2 HLS C-3 Grey Wastewater Lifting Station Pump

Suitable for pumping grey wastewater from 3 different appliances in total:

- 1 x washing machine and/or dishwasher (Hot water resistant up to 90°C for 30 minutes)
- 1 x bathtub and/or cabinet shower
- 1 x washbasin or kitchen sink

Code **2016**

**\$1,165.00**  
inc gst

### Hyjet Sololift2 HLS WC-1 Domestic Sewer Macerating Lifting Station Pump

Suitable for pumping wastewater from:

- 1x toilet (base stand)

Additional sanitary appliances optional:

- 1x wash basin
- 1x cabinet shower
- 1x a bidet or urinal

**\$1,210.00**  
inc gst

Code **2017**



### Hyjet Sololift2 HLS WC-3 Domestic Sewer Macerating Lifting Station Pump

Suitable for pumping wastewater from:

- 1x toilet (base stand)

Additional sanitary appliances optional:

- 1x washbasin

**HYJET**  
pumps

Made by: Grundfos

Code **2018**

**\$1,452.80**  
inc gst

## CIRCULATION PUMPS



### Hyjet 20mm Hot/Cold Circulating Water Pump Stainless W/Unions

#### Application

- Hot water circulating for domestic and commercial hot water systems
- Cold water circulating for air-conditioning and cooling systems

#### Features

- In-line pump casing for easy installation
- Barrel unions on suction and delivery for easy install and maintenance
- 3-speed manual adjustment to suit various applications

#### Application

- Max. Liquid temperature 110°C
- Max. Operating pressure 10 bar

Code **2019**

**\$412.50**  
inc gst

**HYJET**  
pumps





#### DOUBLE BOWL CONNECTOR

CODE	SIZE	PRICE
2804	50mm x 350mm	\$13.99
2839	50mm x 600mm	\$30.28



#### P-TRAP

CODE	SIZE	PRICE
2799	40mm	\$12.55
2798	50mm	\$12.55



#### COMBO S&P TRAP

CODE	SIZE	PRICE
2802	40mm	\$12.19
2803	50mm	\$13.84



#### P-TRAP SHORT LEG

CODE	SIZE	PRICE
2796	40mm	\$17.57
2797	50mm	\$17.57



#### COUPLING PVC THREADED MI

CODE	SIZE	PRICE
2823	40mm	\$2.43
2825	50mm	\$2.43



#### COUPLING PVC THREADED FI

CODE	SIZE	PRICE
2822	40mm	\$2.43
2824	50mm	\$2.43



#### SPIGOT ADAPTOR MI

CODE	SIZE	PRICE
2631	40mm	\$5.05
2629	50mm	\$5.68



#### SPIGOT ADAPTER FI

CODE	SIZE	PRICE
2632	40mm	\$5.05
2630	50mm	\$5.68



#### SLAB REPAIR COUPLING

CODE	SIZE	PRICE
2623	40mm	\$8.53
2624	50mm	\$7.71



#### M/F IN PIPE BENDS 88°

CODE	SIZE	PRICE
2626	40mm x 88 Degree	\$5.68
2625	50mm x 88 Degree	\$6.09



#### BENDS 88° PLAIN F/F DWV

CODE	SIZE	PRICE
2808	40mm x 88 Degree	\$2.18
2809	50mm x 88 Degree	\$2.53



#### BENDS 88° M/F DWV

CODE	SIZE	PRICE
2816	40mm x 88 Degree	\$5.58
2818	50mm x 88 Degree	\$5.58



#### BEND 45° PLAIN F/F DWV

CODE	SIZE	PRICE
2806	40mm x 45 Degree	\$2.18
2807	50mm x 45 Degree	\$2.53



#### M/F BENDS 45° DWV

CODE	SIZE	PRICE
2815	40mm x 45 Degree	\$3.55
2817	50mm x 45 Degree	\$4.18



#### JUNCTION PLAIN 88°

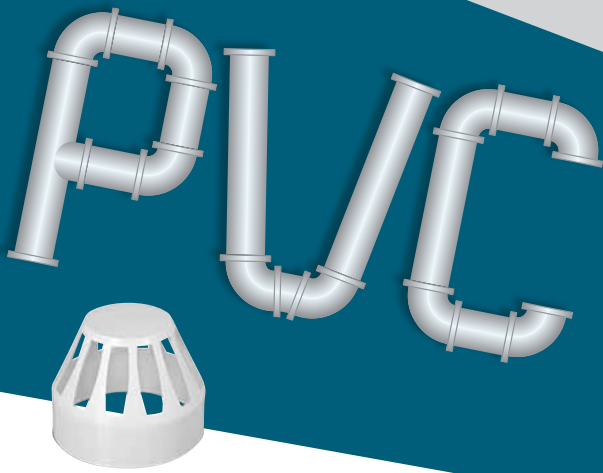
CODE	SIZE	PRICE
2837	40mm x 88 Degree	\$8.93
2836	50mm x 88 Degree	\$8.93



#### JUNCTION PLAIN 45°

CODE	SIZE	PRICE
2628	40mm	\$8.93
2627	50mm	\$8.93





ALL PVC  
COMPLIES  
WITH  
ASNZ1260

WE HAVE A GREAT  
RANGE OF DWV  
FITTINGS TO COVER ALL  
YOUR FIT OFF NEEDS

\*ALL PRICES INCLUDE GST

# FITTINGS

## VENT COWL

CODE	SIZE	PRICE
2829	50mm	\$3.16



## WEATHERING APRON

CODE	SIZE	PRICE
2633	50mm	\$2.75



## AIR ADMITTANCE VALVE

CODE	SIZE	PRICE
2465	32mm, 40mm, 50mm	\$47.32



## LEVEL INLET TAPER

CODE	SIZE	PRICE
2622	40mm x 50mm	\$5.04



## SOCKET REDUCER

CODE	SIZE	PRICE
2620	40mm x 50mm	\$5.05



## PIPE REDUCER

CODE	SIZE	PRICE
2621	40mm x 50mm	\$7.10
2618	100mm x 40mm	\$5.73
2619	100mm x 50mm	\$5.73



## PUDDLE FLANGE

CODE	SIZE	PRICE
2680	80mm x 50mm	\$8.32



## TRAP ADAPTOR

CODE	SIZE	PRICE
2795	32-40mm	\$2.84



## TRAP EXTENSION WITH OVERFLOW

CODE	SIZE	PRICE
2784	50mm x 60mm	\$16.09



## TRAP EXTENSION

CODE	SIZE	PRICE
2780	40mm x 25mm	\$10.77
2781	50mm x 25mm	\$10.77



## TRAP EXTENSION SOLVENT WELD

CODE	SIZE	PRICE
2782	40mm x 200mm	\$30.72
2783	50mm x 200mm	\$30.72



## PAN COLLAR 100MM

CODE	SIZE	PRICE
2800	Standard	\$11.48
2801	20mm Offset	\$11.48



## FLEXI FIN PAN COLLAR

CODE	SIZE	PRICE
2821	100mm	\$19.91
2820	20mm Offset	\$20.70
2634	40mm Offset	\$27.46



PLUMBERS CHOICE  
CONTINUING TO  
**INNOVATE**

THE

PLUMBING  
INDUSTRY

# MONUMENT PVC CUTTERS

## QUICK & CLEAN CUT!



**GREAT  
FOR 40MM  
& 50MM  
POLY**



PIPE CUTTER  
AUTOCUT MONUMENT  
50MM PVC

**\$53<sup>02</sup>**

INC. GST  
Code: 2645



PIPE CUTTER  
AUTOCUT MONUMENT  
40MM PVC

**\$49<sup>72</sup>**

INC. GST  
Code: 2644

- Quality UK designed and made
- Light weight
- Ideal for confined spaces
- Spare blades available

## TRAP DRILL

### DRILLS AND DEBURS IN ONE ACTION

- Drills and deburs in one action
- Safety stop prevents over drilling
- For drilling hole in trap in preparation for connecting dishwasher
- Made from high quality, high speed steel



**SAFETY  
STOP  
PREVENTS  
OVER  
DRILLING**

**\$68.93**

INC. GST

Code: 2601



**plumtool™**



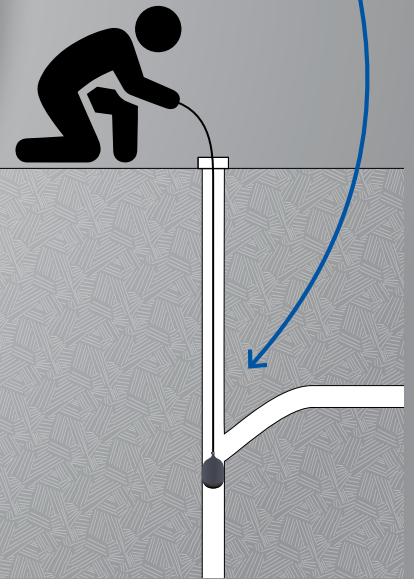
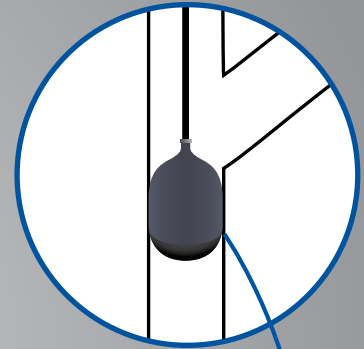
## INFLATABLE TEST PLUG 100MM

- Equipped with 2.5m hose
- To suit 100mm PVC
- Inflate with car pump
- Can be used down an inspection shaft

Code: 2009

**\$105.67**

**Equipped with  
2.5m hose**



## TEST PLUG ALUMINIUM 100MM

- A breeze to install
- 2 convenient tie-off points
- Size 100mm

Code: 2149

**\$52.84**



## TEST PLUG RIGHT ANGLED WITH HANDLES 100mm

- Keeps hands out of the drain
- A breeze to install
- Cannot be lost down drain
- The only plug to use when testing at a right angled junction
- Cast Aluminium
- Patented

Code: 2004

**\$153.16**



**CHS** CHRIS HUNTER  
SALES

**NEW**



**You asked,  
we delivered!**

## Cover Plate for Bayonet Fitting

**THE LARGEST RISE COVER  
PLATE ON THE MARKET**

- 39mm rise
- 1/2 inch BSP
- Ideal for bayonet gas fittings
- Fixing holes line up with bayonet



Code 6599

**NEW**



## Rough Brass for Corrugated 1/2" BSP

- Foam backing moulds to any position on corrugate, Keeps bugs out
- Rough brass cover plate matches the hose bib to leave a professional finish
- Will not rust outdoors



Code 4005



## Cover Plate Backing Foam

- Suits Cover Plates OD of 70mm
- Foam backing moulds to corrugation
- Adhesive backing to stick to Cover Plate
- Keeps out spiders and other pests



Code 4009



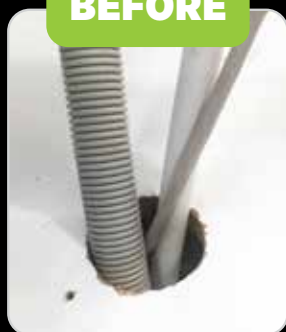
*"For the professional plumber"*

## DISHWASHER COVER PLATES

- Leaves a neat finish in the cupboard
- Keeps pests out
- Fits over the solenoid valve

Code: 1792

**BEFORE**



**AFTER**

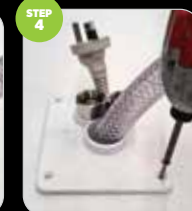
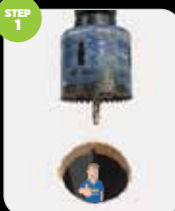


## MULTI PURPOSE COVER PLATE

Suitable for Washing Machines & Dishwashers

- Leaves a neat finish in the cupboard
- Keeps pests out
- Fits hot & cold hoses, power cord, Optional outlet hose cap

Code: 1796







# SORTING BIN STACK ABLE

**LARGE**

**\$25.41**  
INC. GST

Can be divided  
into 3 with  
Divider

Code: 2690



**420 x 370 x 170mm**

**MEDIUM**

**\$17.27**  
INC. GST

Can be divided  
into 2 with  
Divider

Code: 2686



**210 x 370 x 175mm**

**DIVIDER**

**\$3.30**  
INC. GST

Used to divide  
storing bins to  
create extra  
storage

Code: 2692



\*Divider only. Sorting bin not included.

- Ideal for sorting and organising small fittings
- Sorting bins can be stacked on top of each other or side by side
- Bins include 4 pegs for stacking

PLUMBERS CHOICE  
CONTINUING TO  
**INNOVATE** THE PLUMBING  
INDUSTRY



# PEX CLIPS

PRICES INC. GST



BAG QTY  
**100**

**PEX SADDLES  
MASONRY NAIL**

• 16mm  
Code: 9054 **\$26.16**



BAG QTY  
**100**

**PEX SADDLES  
MASONRY NAIL**

• 20mm  
Code: 9055 **\$27.80**



BAG QTY  
**100**

**DUALPEX  
MASONRY NAIL**

• 16mm to 20mm  
Code: 5559 **\$33.85**



BAG QTY  
**100**

**DUALPEX  
WITH TAB  
MASONRY NAIL**

• 16mm to 20mm  
Code: 5551 **\$37.91**



BAG QTY  
**100**

**DUALPEX  
TWISTED NAIL**

• 16mm to 20mm  
Code: 7895 **\$37.95**



BAG QTY  
**100**

**DUALPEX  
TIMBER SCREW**

• 16mm to 20mm  
Code: 5568 **\$37.68**

**NEW**

EACH HEX HEAD BAG COMES WITH A **FREE** DRIVER BIT



BAG QTY  
**100**

**PEX SADDLES  
HEX HEAD SD SCREW**

• 16mm  
Code: 9075 **\$36.72**



BAG QTY  
**100**

**PEX SADDLES  
HEX HEAD SD SCREW**

• 20mm  
Code: 9076 **\$34.69**



BAG QTY  
**100**

**DUALPEX  
HEX HEAD SD SCREW**

• 16mm to 20mm  
Code: 5577 **\$37.97**



BAG QTY  
**100**

**DUALPEX W/TAB  
HEX HEAD SD SCREW**

• 16mm to 20mm  
Code: 5578 **\$40.67**

# PAN WEDGE

Get the perfect  
silicone finish  
to the pan



- Lifts and levels the pan before applying silicone
- The wedge is invisible once installed



## LARGE



17mm Wide & steps up to 22mm High

**\$38<sup>89</sup>**  
INC. GST  
Code: 2022

**10**  
QTY

## MINI



6mm Wide & steps up to 5mm High

**\$38<sup>89</sup>**  
INC. GST  
Code: 2021

**100**  
QTY

**AQUARIUS**  
DISTRIBUTION

# COMPLETE COVER PLATES CAMERA DRAIN CAPS

- Cap fits in a 35mm hole
- Can be used on flat or round downpipes
- Seals the hole when inserted
- Can be removed easily



**\$36<sup>42</sup>**  
INC. GST  
Code: 4807

**QTY**  
**50**

**AQUARIUS**  
DISTRIBUTION



# UV STABILISED BLACK NYLON TAP-INS WILL NOT FAIL!



- Black Tap-Ins will not fail when exposed to the sun
- Decero coated nails will not rust (exceeds 1000 hour salt spray test)



Weather affected  
Nylon Tap-Ins  
are a thing of  
the past!



**BOX  
500**

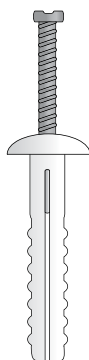


## NYLON TAP-INS - UV BLACK

- For outdoor use
- Black Nylon UV stabilised will not perish

CODE	LENGTH	QTY	PRICE
9524	5mm x 25mm	500	\$81.76
1187	5mm x 40mm	500	\$114.41

**BOX  
100**

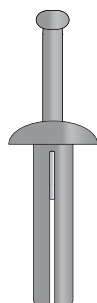


## NYLON TAP-INS - MUSHROOM HEAD

- 100% nylon, not plastic

CODE	LENGTH	QTY	PRICE
9345	5mm x 25mm	100	\$15.09
9925	6.5mm x 50mm	100	\$26.33

**BOX  
100**



## METAL TAP-INS - MUSHROOM HEAD

- Strong cast alloy

CODE	LENGTH	QTY	PRICE
9387	5mm x 25mm	100	\$40.33
1967	6.5mm x 25mm	100	\$43.81
1968	6.5mm x 32mm	100	\$55.59
1705	6.5mm x 40mm	100	\$52.98

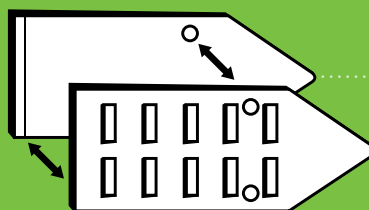
## NYLON TAP-INS - ROUND HEAD

- 100% nylon, not plastic

CODE	LENGTH	QTY	PRICE
9978	5mm x 25mm	100	\$14.78
9907	5mm x 25mm	500	\$65.24
9179	5mm x 40mm	100	\$21.14
9973	5mm x 40mm	500	\$90.51
9567	6.5mm x 25mm	100	\$21.64
2262	6.5mm x 40mm	100	\$26.04

\*All prices include GST

# STYROWEDGE



**\$58.42**

INC. GST  
Code: 1222

**BAG QTY  
50**



*Great for fixing  
downpipes  
to foam walls*

NB. Ensure all penetrations are sealed.

**Step 1** Cut a 30mm slot, 50mm deep into the wall.



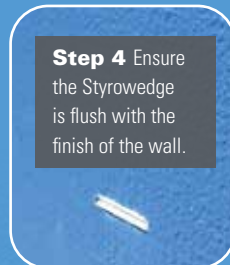
**Step 2** Take 2 Styrowedge halves and join the smooth sides together.



**Step 3** Insert the Styrowedge into the slot in the wall.



**Step 4** Ensure the Styrowedge is flush with the finish of the wall.



**Step 5**

Place the downpipe and clip in position on the wall. Insert an 8-12 gauge screw into the Styrowedge and tighten into place.



# EXTENDO

## GAS CONNECTOR

**F + F NOW AVAILABLE**



**BROMIC**  
PLUMBING & GAS

Extendable  
from **650mm**  
to **1200mm**

- ✓ Saves Space, **ONE Connector does it all!**
- ✓ 12mm internal bore for better gas flow
- ✓ Flame resistant stainless steel
- ✓ AGA Approved 8633G
- ✓ 1/2" M+F
- ✓ 1/2" F+F

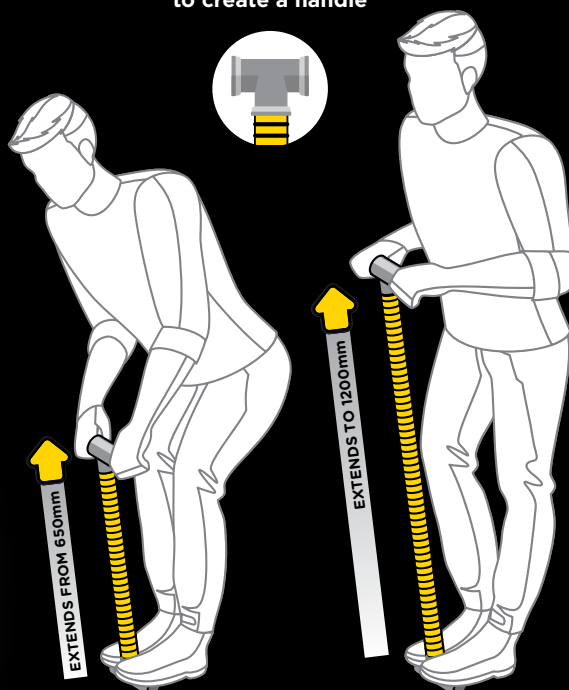


**BOX  
10**

**\$246.78**  
INC. GST

M+F Code: 6176  
F+F Code: 6178

**HANDY TIP:**  
Attach a brass tee to either end  
to create a handle





# Jacko's Review



## TUNGSTEN HOLE SAW KIT

CODE: 9430

- Pilot drill has tungsten tip suitable for cement sheet or timber
- Sizes to suit DWV pipe
- Drill tips made from certified YB8C Tungsten

### KIT CONTAINS

- Tungsten tip arbor
- 44mm, 59mm, 73mm, 93mm & 114mm hole saws



**SAVE**  
**\$136.69**

**ONLY**  
**\$200**

INC. GST

Great all round hole saw kit, excellent for cement sheet and tile underlining without burning out like the others do.

Jimmy -  
Jibba Jab Plumbing & Gas

J



**GREAT**  
**FOR**  
**TIMBER**  
**FRAMES**

plumtool™

Valid until October 31st 2022

Same day delivery for Sydney and Melbourne Metro

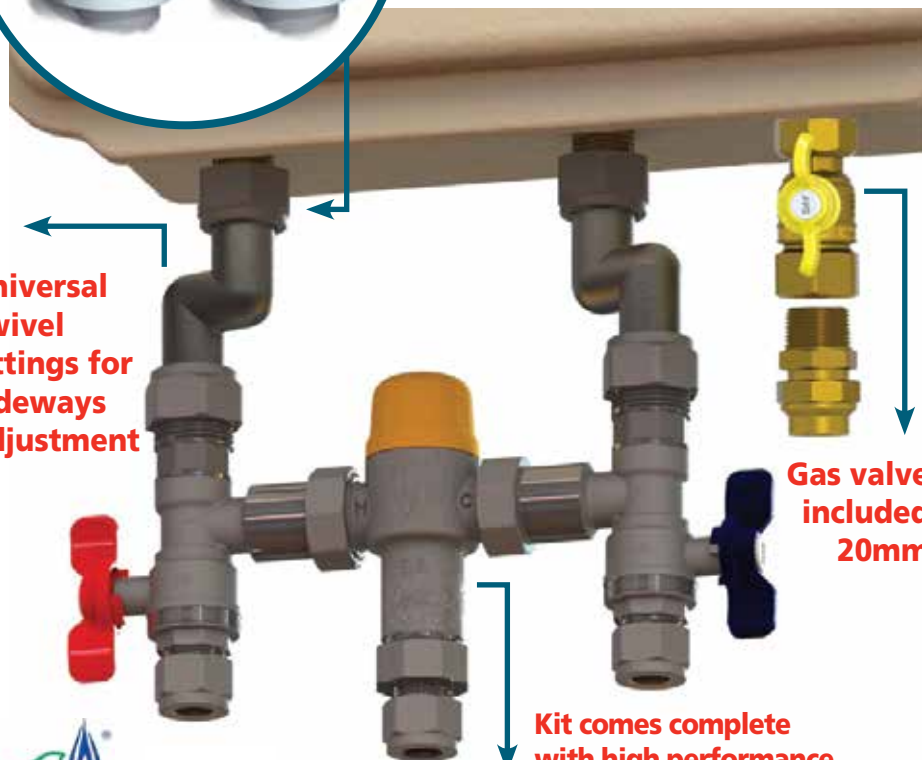


# Quickie Kit



**Connections to unit allow for height adjustment**

**Universal swivel fittings for sideways adjustment**



**Gas valve included 20mm**

**Kit comes complete with high performance tempering valve**



24 Month warranty



**Insulation & cable ties provided to comply with AS3500**

**Fit-off a hot water service in minutes!**  
Suits all instantaneous hot water services.

15mm outlet & tempering valve Code: 8300 | 20mm outlet & tempering valve Code: 8301

**Andrew from AMT Plumbing in Bayswater said:**

I recently tried the Quickie Kit on an install. I reckon it saved me at least 30-45 minutes. The insulation and cable ties included in the kit made for a nice neat finish. Everything I needed was there.

## PRESS UNION BALL VALVE KIT

- A complete kit to suit your specific combination of gas and water connection
- Rubber Gaskets - Easy No Leak Sealing
- Gas Safety Certified



**PRESS UNION BALL VALVE KIT  
20mm GAS X 15mm WATER**



**\$88.33**  
INC. GST  
Code: 8551

**PRESS UNION BALL VALVE KIT  
20mm GAS & WATER**



**\$88.33**  
INC. GST  
Code: 8552

# SPECIAL

## PRESS BALL VAVES

### PRESS BALL VALVE WATER

- Complies with Australian Standards AS3688

15mm Socket x Socket | **CODE: 8590**  
20mm Socket x Socket | **CODE: 8591**



**15mm**  
SOCKET X SOCKET  
**\$16.50**  
INC GST

**20mm**  
SOCKET X SOCKET  
**\$22.00**  
INC GST

### PRESS BALL VALVE WATER

- Complies with Australian Standards AS3688

15mm FI x Socket | **CODE: 8592**  
20mm FI x Socket | **CODE: 8593**



**15mm**  
FI X SOCKET  
**\$16.50**  
INC GST

**20mm**  
FI X SOCKET  
**\$22.00**  
INC GST

WATER

### PRESS BALL VALVE GAS

- Complies with Australian Standards AS3688
- AGA 6132 approved

15mm Socket x Socket | **CODE: 8594**  
20mm Socket x Socket | **CODE: 8595**



**15mm**  
SOCKET X SOCKET  
**\$16.50**  
INC GST

**20mm**  
SOCKET X SOCKET  
**\$22.00**  
INC GST

### PRESS BALL VALVE GAS

- Complies with Australian Standards AS3688
- AGA 6132 approved

15mm FI x Socket | **CODE: 8596**  
20mm FI x Socket | **CODE: 8597**



**15mm**  
FI X SOCKET  
**\$16.50**  
INC GST

**20mm**  
FI X SOCKET  
**\$22.00**  
INC GST

GAS

### TRI-SET VALVES

- One valve with three pressure settings 350kPa, 500kPa & 600kPa

Compression 15mm | **CODE: 3610**  
Female 15mm | **CODE: 3611**

**ONLY**  
**\$33.00**  
INC GST



Valid until  
October 31st 2022

PLUMBERS CHOICE  
CONTINUING TO  
**INNOVATE**

THE  
**PLUMBING  
INDUSTRY**

# A simple lifting strap

Developed by an  
**EXPERIENCED PLUMBER**

**CYLINDER  
STRAP**

**\$121** INC. GST

CODE 5087

- Australian Made & Designed
- Cylinder Lifting Aid
- 2.4m Length
- Assists in moving a cylinder in tight/difficult spots
- Put handles on your HWS for easy lifting





**NOW  
AVAILABLE**

## COPPER COILS

- Copper tube to be dispatched from Brisbane
- **Quality Guaranteed:** Copper tube is certified to comply with AS1432 - copper tube for plumbing, gas fittings and drainage applications



**3/4 INCH**

19mm x 1.02 x 18m  
Annealed Type B

**\$276.43** inc. GST

Per 1. Minimum order of 2

CODE: 7801



**1/2 INCH**

12mm x 0.91 x 18m  
Annealed Type B

**\$141.68** inc. GST

Per 1. Minimum order of 3

CODE: 7800



**1/2 INCH**

12mm x 1.02 x 18m  
Annealed Type A

**\$159.50** inc. GST

Per 1. Minimum order of 3

CODE: 7802

## COPPER ROUNDING TOOL

**NEW**

**3/4"** \$55.64 inc. GST

Code: 9898

Suitable for 3/4" copper tube

**1/2"** \$52.88 inc. GST

Code: 9888

Suitable for 1/2" copper tube

- Saves time
- Nuts slide on easily
- Great frustration saver
- Lightweight and compact

**ROUNDS  
OUT  
COPPER IN  
SECONDS!**



**plumtool™**

*Innovative tools for* **PLUMBERS**



## PRESS GAS FITTINGS



**PRESS GAS COUPLING**

CODE	SIZE	PRICE
8639	15mm	\$6.26
8640	20mm	\$8.04
8641	25mm	\$13.75



**PRESS GAS SLIP REPAIR COUPLING**

CODE	SIZE	PRICE
8642	15mm	\$6.00
8643	20mm	\$7.54
8644	25mm	\$11.69



**PRESS GAS ELBOW F/F 90°**

CODE	SIZE	PRICE
8645	15mm x 90	\$7.44
8646	20mm x 90	\$9.72
8647	25mm x 90	\$17.86



**PRESS GAS ELBOW F/F 45°**

CODE	SIZE	PRICE
8697	15mm x 45	\$8.50
8648	20mm x 45	\$11.60
8649	25mm x 45	\$15.46



**PRESS GAS REDUCING COUPLING F/F**

CODE	SIZE	PRICE
8650	20mm x 15mm	\$11.11
8651	25mm x 20mm	\$13.70



**PRESS GAS REDUCER M/F**

CODE	SIZE	PRICE
8652	20mm x 15mm	\$9.71
8653	25mm x 20mm	\$13.12



**PRESS GAS TEE**

CODE	SIZE	PRICE
8654	15mm	\$8.59
8655	20mm	\$14.81
8656	25mm	\$23.15



**PRESS GAS TEE REDUCING**

CODE	SIZE	PRICE
8657	20 x 20 x 15	\$15.29
8658	25 x 25 x 15	\$23.52
8659	25 x 25 x 20	\$26.00



**PRESS GAS END CAP**

CODE	SIZE	PRICE
8660	15mm	\$8.10
8661	20mm	\$9.13
8662	25mm	\$16.08



**PRESS GAS ELBOW LUGGED**

CODE	SIZE	PRICE
8663	15mm x 15FI	\$18.40
8664	20mm x 20FI	\$20.12



**BLOCKHEAD PRESS GAS ELBOW LUGGED (90MM)**

CODE	SIZE	PRICE
8698	15mm x 15MI	\$18.40



**PRESS GAS ADAPTOR MI**

CODE	SIZE	PRICE
8666	15mm x 15MI	\$5.51
8667	20mm x 20MI	\$13.59
8668	25mm x 25MI	\$21.39



**PRESS GAS ADAPTOR FI**

CODE	SIZE	PRICE
8669	15mm x 15FI	\$7.44
8670	20mm x 20FI	\$11.32
8671	25mm x 25FI	\$15.43



**PRESS GAS SLIP TEE**

CODE	SIZE	PRICE
8693	20mm	\$17.85

## 25 YEAR WARRANTY\*

Brasshards is proud to offer a 25 year warranty against defects and manufacturing faults in CuPress fittings (when installed in accordance with national, state and local plumbing codes by a licensed plumber). Issues arising from incorrect installation, misuse or environmental elements are not covered by this warranty. Please contact Brasshards for a copy of our full warranty document.



# PRESS WATER FITTINGS

- Flame-free
- Permanent V-Profile press join
- All fittings comply with Australian Standards AS3688



**PRESS WATER COUPLING**

CODE	SIZE	PRICE
8601	15mm	\$4.14
8602	20mm	\$6.13
8603	25mm	\$8.70



**PRESS WATER SLIP REPAIR COUPLING**

CODE	SIZE	PRICE
8604	15mm	\$4.69
8605	20mm	\$6.95
8606	25mm	\$10.52



**PRESS WATER ELBOW F/F 90°**

CODE	SIZE	PRICE
8607	15mm x 90	\$4.69
8608	20mm x 90	\$7.18
8609	25mm x 90	\$13.24



**PRESS WATER ELBOW F/F 45°**

CODE	SIZE	PRICE
8610	15mm x 45	\$5.86
8611	20mm x 45	\$8.08
8612	25mm x 45	\$14.87



**PRESS WATER ELBOW M/F 90°**

CODE	SIZE	PRICE
8681	15mm	\$5.41
8682	20mm	\$7.11



**PRESS WATER REDUCING COUPLING F/F**

CODE	SIZE	PRICE
8613	20mm x 15mm	\$9.38
8614	25mm x 20mm	\$15.99
8542	18mm x 15mm	\$00.00
8543	20mm x 18mm	\$00.00



**PRESS WATER REDUCER M/F**

CODE	SIZE	PRICE
8615	20mm x 15mm	\$8.41
8616	25mm x 20mm	\$11.94



**PRESS WATER END CAP**

CODE	SIZE	PRICE
8623	15mm	\$7.43
8624	20mm	\$9.00
8625	25mm	\$17.63



**PRESS WATER TEE**

CODE	SIZE	PRICE
8617	15mm	\$7.23
8618	20mm	\$10.90
8619	25mm	\$20.21



**PRESS WATER TEE REDUCING**

CODE	SIZE	PRICE
8620	20 x 20 x 15	\$13.51
8621	25 x 25 x 15	\$19.12
8622	25 x 25 x 20	\$22.96
8683	20 x 15 x 15	\$17.84
8684	20 x 15 x 20	\$18.77



**PRESS WATER SLIP TEE**

CODE	SIZE	PRICE
8692	15mm	\$11.67
8690	20mm	\$13.08
8694	20x20x15	\$16.43



**PRESS WATER ELBOW LUGGED**

CODE	SIZE	PRICE
8626	15mm x 15FI	\$13.36
8627	20mm x 20FI	\$19.05



**BLOCKHEAD PRESS WATER ELBOW LUGGED (90MM)**

CODE	SIZE	PRICE
8699	15mm x 15MI	\$16.35



**PRESS WATER ELBOW FI**

CODE	SIZE	PRICE
8629	15mm x 15FI	\$14.77
8630	20mm x 20FI	\$17.88



**PRESS WATER ELBOW MI**

CODE	SIZE	PRICE
8631	15mm x 15MI	\$14.23
8632	20mm x 20MI	\$17.89



**PRESS WATER ELBOW UNION**

CODE	SIZE	PRICE
8687	15mm x 1/2"	\$9.03
8688	20mm x 3/4"	\$13.64



**PRESS WATER ADAPTOR MI**

CODE	SIZE	PRICE
8633	15mm x 15MI	\$6.94
8680	15mm x 20MI	\$10.60
8691	20mm x 15MI	\$12.67
8634	20mm x 20MI	\$11.47
8635	25mm x 25MI	\$20.52



**PRESS WATER ADAPTOR FI**

CODE	SIZE	PRICE
8636	15mm x 15FI	\$6.59
8637	20mm x 20FI	\$8.41
8638	25mm x 25FI	\$14.99



**PRESS UNION**

CODE	SIZE	PRICE
8685	Loose Nut 15mm x 15mm Press (Flat Seat)	\$11.61
8679	Loose Nut 20mm x 20mm Press (Flat Seat)	\$13.05



**PRESS UNION**

CODE	SIZE	PRICE
8696	Loose Nut Compression 15mm x 15mm Press	\$10.21
8689	Loose Nut Compression 20mm x 20mm Press	\$10.54



PLUMBERS CHOICE  
CONTINUING TO  
**INNOVATE**

THE

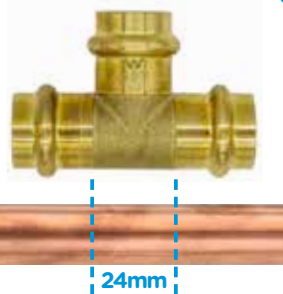
PLUMBING  
INDUSTRY

# PRESS SLIP TEES



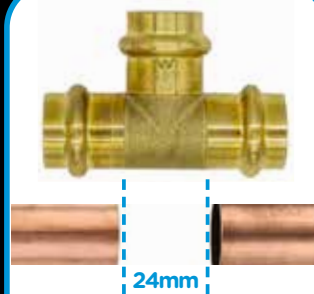
EXCLUSIVE TO PLUMBERS CHOICE

STEP 1



Mark 24mm gap in  
copper using guide  
on fitting

STEP 2



Cut 24mm Gap  
in Copper

STEP 3



Pull copper back  
to slide tee onto  
one side

STEP 4



Slide back into  
position and crimp  
press fitting



- 25 year warranty\*
- Permanent V-Profile press join profile
- Leak detection o-ring
- Complies with Australian Standards AS3688

PRESS  
**WATER**  
SLIP TEE

15mm

**\$11.67**  
INC. GST

CODE 8692

PRESS  
**WATER**  
SLIP TEE

20mm

**\$13.08**  
INC. GST

CODE 8690

PRESS  
**WATER**  
SLIP TEE

20x20x15mm

**\$16.43**  
INC. GST

CODE 8694

PRESS  
**GAS**  
SLIP TEE

20mm

**\$17.85**  
INC. GST

CODE 8693