

# plumbers choice **TRADE ONLY**

## WE ENJOY BEING THE **ODD ONE OUT**



**TRADE  
ONLY**

489 Mountain Highway, Bayswater, VIC 3153  
Email: [info@plumberschoice.com.au](mailto:info@plumberschoice.com.au) • Ph: (03) 9720 8274

[www.plumberschoice.com.au](http://www.plumberschoice.com.au)



# Luke's Editorial



## AT PLUMBERS CHOICE WE LOVE BEING THE ODD ONE OUT.

**From day one Plumbers Choice has always been a bit of a misfit in the plumbing industry and that is the way we like it.**

In the beginning, rather than setting up a retail branch network, we operated out of wholesale distribution centres. This gives our model a cost advantage over our competitors. We love passing on this advantage in the form of great value to plumbing businesses. We also love product innovation. These innovations make the working lives of plumbers easier and more productive. Plumbers who deal with us understand how important it is to stay ahead of the pack. Traditional plumbing supplies generally need to be dragged kicking and screaming to take on new products. When you run an old style branch network the flow of new products is difficult.

The difference we are most passionate about is our Trade Only stance. Our policy of only supporting the plumbing trade has made us laser focused on the needs of tradesmen and plumbing businesses. It is what makes us so good at what we do. It certainly makes us stand out from every other plumbing merchant in the country. I believe it is also the reason that many plumbers support us and it is this support that is fuelling our growth.

Our goal is in fact to change our industry to Trade Only. We love the support we receive from plumbers for being the odd one out.



**LUKE BOLTON**  
DIRECTOR, PLUMBERS CHOICE

**LUKE BOLTON - DIRECTOR, PLUMBERS CHOICE**

## HOW TO ORDER



### Online - 24 hours

[www.plumberschoice.com.au](http://www.plumberschoice.com.au)



### Email - 24 hours

[sales@plumberschoice.com.au](mailto:sales@plumberschoice.com.au)



### Phone - Business Hours

(03) 9720 8274

Our knowledgeable staff will take your order.



### At our Trade Outlets

Monday - Friday

489 Mountain Highway, Bayswater, VIC 3153

4/200 Woodpark Road, Smithfield, NSW 2164



### Personal Sales Rep

Your personal Sales Representative is able to tailor our service to suit your needs.



Shop  
Trade Only  
from the palm  
of your hand!



# DISHWASHER COVER PLATES

*"For the professional plumber"*



**BEFORE**

**AFTER**

**NEW**

- Leave a neat finish in the cupboard
- Keeps pests out
- Fits over the solenoid valve

**Code: 1792**

**STEP 1**



**STEP 2**



**STEP 3**



**STEP 4**



**Australia is  
currently  
experiencing a  
Mouse Plague**

**STOP**   
them in their tracks with a  
**DISHWASHER  
COVER PLATE**

Pipes will hold tightly and securely. These pipe supports are **built to last.**

*Nylon Coated*



**SPECIAL  
ALL C  
\$1**

# Clip Heads

**100mm  
Nylon Coated**

**Code: 1363**  
INC. GST

**90mm  
Nylon Coated**

**Code: 1362**  
INC. GST

**80mm  
Nylon Coated**

**Code: 1361**  
INC. GST

**65mm  
Nylon Coated**

**Code: 1360**  
INC. GST

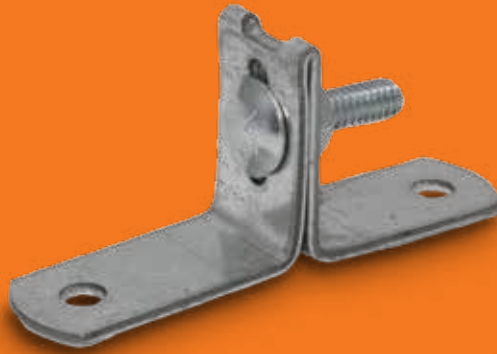
**50mm  
Nylon Coated**

**Code: 1359**  
INC. GST

**40mm  
Nylon Coated**

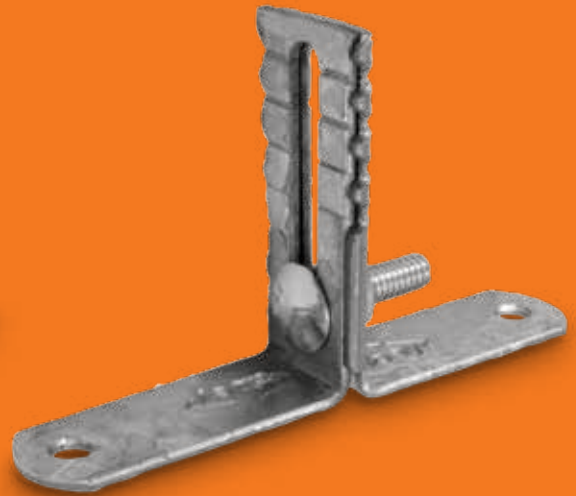
**Code: 1358**  
INC. GST

# Stand off Brackets



**Stand Off Bracket**  
Galvanised finish

**Code: 1569**  
INC. GST



**Stand Off Bracket**  
Adjustable  
Galvanised finish

**Code: 1813**  
INC. GST

**SPECIAL  
ONLY**

**.10**

INC. GST

# Hangers

**Hanging Strap**  
Light 350mm  
Galvanised finish

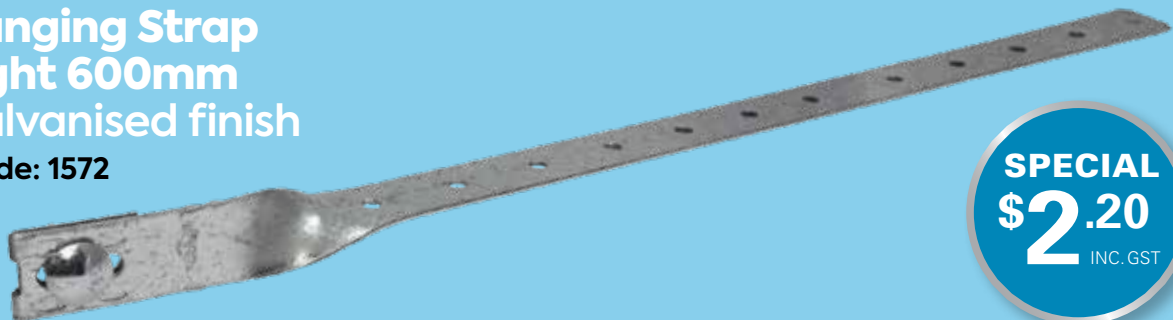
**Code: 1570**  
INC. GST



**NOW**  
**50mm LONGER**

**Hanging Strap**  
Light 600mm  
Galvanised finish

**Code: 1572**



**SPECIAL**  
**\$2.20**  
INC. GST

Valid until 31st August 2021

# Pex Clips

NYLON ANCHOR MASONRY NAIL

## DUALPEX NYLON ANCHOR MASONRY NAIL

For 16-20mm  
Pex Pipe

**\$35<sup>59</sup>**  
INC. GST

Code: 7896

**BAG  
100**

*With Nylon Anchor*



## DUALPEX SADDLE FOR PEX WITH NYLON ANCHOR MASONRY NAIL

25mm

**\$21<sup>42</sup>**  
INC. GST

Code: 7897

**BAG  
50**



**ALL IN  
ONE CLIP  
& PLUG**

**BAG  
QTY 100**



### Pex Saddles MASONRY NAIL

25mm Code: 9056 **\$38.40**



### Pex Saddles SD SCREW

25mm Code: 4523 **\$41.13**



*With Tab*

### DUALPEX MASONRY NAIL

16mm to 20mm  
Code: 5551 **\$34.47**



### DUALPEX MASONRY NAIL

16mm to 20mm  
Code: 5559 **\$30.76**



### DUALPEX TWISTED NAIL

16mm to 20mm  
Code: 7895 **\$34.50**



### DUALPEX TIMBER SCREW

16mm to 20mm  
Code: 5568 **\$34.26**

**NEW**

PRICES INC. GST

**plumtool™**

**BULK SPECIAL**

**FREE SAW**  
WITH ANY  
**BOX OF PEX CLIPS**



Valid until 31st August 2021

Same day delivery for Sydney and Melbourne Metro

# BIGGEST TIMBER SHORTAGE IN OVER 40 YEARS

## SAVE A LOG BUY A **FASTANOG**

**NEW**

Same  
price as a  
traditional  
luggie!

**BLOCK  
HEAD**

### **BLOCKHEAD LUGGED ELBOW**

- Reduce the number of noggins required
- Can press it while in place
- Fix it from any direction
- Lead-free brass
- 25 year warranty



Blockhead Press  
Water Elbow Lugged  
15mm x 15MI (90mm)  
**Code: 8699**

Blockhead Press  
Gas Elbow Lugged  
15mm x 15MI (90mm)  
**Code: 8698**



**Traditional Fix**  
Plumber's Noggin



**Stud Fix**  
Fix to side of studs



**Existing Noggin**  
Fix to carpenter's noggin



| PLUMBING SUPPLIES SPECIALIST |



**PATENTED**

Under licence no. 2001



# FASTANOG BLOCK

# 4x FASTER

- Pre-loaded with bugle screws
- Set back measurer
- Fits small spaces
- Strong and versatile

CODE: 1475

AVAILABLE IN A  
BOX OF 10



## FASTANOG

### PRELOADED WITH HEX SD SCREW

Extends 330mm – 600mm



Drill



Hex SD Screw



CODE: 1471



### PRELOADED WITH BUGLE SCREW

Extends 330mm – 600mm



Drill



Bugle Screw

CODE: 1464



### MINI PRELOADED WITH BUGLE SCREW

Extends 190mm – 330mm



Drill



Bugle Screw

CODE: 1474



## SAY GOODBYE TO TIMBER NOGGINS

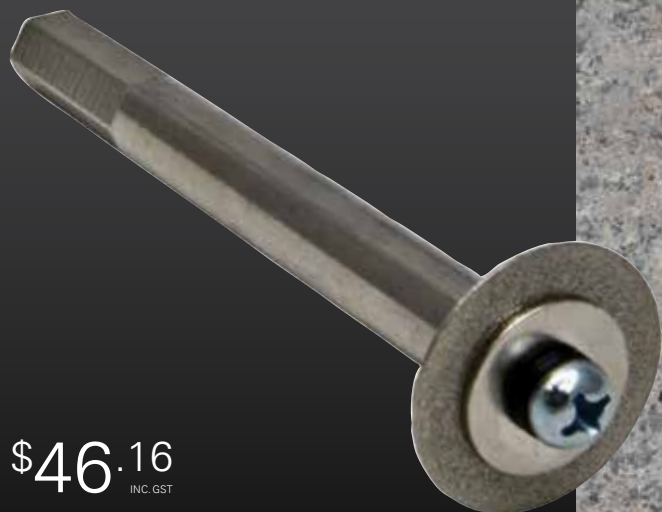
PATENTED

**plumtool™**

## INTERNAL PIPE CUTTER

**Diamond blade will not  
blunt on concrete**

- Cuts 40mm up to 150mm
- Extension bars available



**\$46.16**  
INC. GST

Code: 1347

**CUTS  
PLASTIC PIPE  
INTERNALLY**



**plumtool™**

## NIPPLE CUTTER & CATCHER

**To create the perfect  
sealing surface**

- Single piece shaft results in less chattering
- Provides the perfect sealing surface
- Create a flat or chamfered end on the nipple



**\$106.51**  
INC. GST

Code: 9231



**NEW  
CLEAR  
CATCHER**



# SPECIFICALLY DESIGNED FOR CUTTING PVC



**30% MORE  
EFFICIENT THAN  
STANDARD BLADES**

**CUTS STRAIGHT  
EVERYTIME**

**BATTERIES  
LAST LONGER**

**CUT IS FREE  
OF BURRS**



## **SAMURAI RECIPROCATING SAW BLADE PVC**

• 210mm • 16TPI • Made in Japan

**AVAILABLE IN A  
BOX of 10**

**\$19.51** EACH  
INC. GST  
Code: 9632

## **COPPER ROUNDING TOOL**

**NEW**

**3/4"** \$55.64  
INC. GST

Code: 9898

Suitable for 3/4" copper tube

**1/2"** \$52.88  
INC. GST

Code: 9988

Suitable for 1/2" copper tube

- Saves time
- Nuts slide on easily
- Great frustration saver
- Lightweight and compact

**ROUNDS  
OUT  
COPPER IN  
SECONDS!**



**plumtool™**

*Innovative tools for* **PLUMBERS**



## PRESS GAS FITTINGS



**PRESS GAS COUPLING**

CODE	SIZE	PRICE
8639	15mm	\$6.26
8640	20mm	\$8.04
8641	25mm	\$13.75



**PRESS GAS SLIP REPAIR COUPLING**

CODE	SIZE	PRICE
8642	15mm	\$6.00
8643	20mm	\$7.54
8644	25mm	\$11.69



**PRESS GAS ELBOW F/F 90°**

CODE	SIZE	PRICE
8645	15mm x 90	\$7.44
8646	20mm x 90	\$9.72
8647	25mm x 90	\$17.86



**PRESS GAS ELBOW F/F 45°**

CODE	SIZE	PRICE
8648	20mm x 45	\$11.60
8649	25mm x 45	\$15.46



**PRESS GAS REDUCING COUPLING F/F**

CODE	SIZE	PRICE
8650	20mm x 15mm	\$11.11
8651	25mm x 20mm	\$13.70



**PRESS GAS REDUCER M/F**

CODE	SIZE	PRICE
8652	20mm x 15mm	\$9.71
8653	25mm x 20mm	\$13.12



**PRESS GAS TEE**

CODE	SIZE	PRICE
8654	15mm	\$8.59
8655	20mm	\$14.81
8656	25mm	\$23.15



**PRESS GAS TEE REDUCING**

CODE	SIZE	PRICE
8657	20 x 20 x 15	\$15.29
8658	25 x 25 x 15	\$23.52
8659	25 x 25 x 20	\$26.00



**PRESS GAS END CAP**

CODE	SIZE	PRICE
8660	15mm	\$8.10
8661	20mm	\$9.13
8662	25mm	\$16.08



**PRESS GAS ELBOW LUGGED**

CODE	SIZE	PRICE
8663	15mm x 15FI	\$18.40
8664	20mm x 20FI	\$20.12



**BLOCKHEAD PRESS GAS ELBOW LUGGED (90MM)**

CODE	SIZE	PRICE
8698	15mm x 15MI	\$18.40



**PRESS GAS ADAPTOR MI**

CODE	SIZE	PRICE
8666	15mm x 15MI	\$5.51
8667	20mm x 20MI	\$13.59
8668	25mm x 25MI	\$21.39



**PRESS GAS ADAPTOR FI**

CODE	SIZE	PRICE
8669	15mm x 15FI	\$7.44
8670	20mm x 20FI	\$11.32
8671	25mm x 25FI	\$15.43

## 25 YEAR WARRANTY\*

Brasshards is proud to offer a 25 year warranty against defects and manufacturing faults in CuPress fittings (when installed in accordance with national, state and local plumbing codes by a licensed plumber). Issues arising from incorrect installation, misuse or environmental elements are not covered by this warranty. Please contact Brasshards for a copy of our full warranty document.

# PRESS WATER FITTINGS



**PRESS WATER COUPLING**

CODE	SIZE	PRICE
8601	15mm	\$4.13
8602	20mm	\$6.13
8603	25mm	\$8.70



**PRESS WATER SLIP REPAIR COUPLING**

CODE	SIZE	PRICE
8604	15mm	\$4.68
8605	20mm	\$7.19
8606	25mm	\$10.52



**PRESS WATER ELBOW F/F 90°**

CODE	SIZE	PRICE
8607	15mm x 90	\$4.68
8608	20mm x 90	\$7.19
8609	25mm x 90	\$13.24



**PRESS WATER ELBOW F/F 45°**

CODE	SIZE	PRICE
8610	15mm x 45	\$5.86
8611	20mm x 45	\$8.08
8612	25mm x 45	\$14.87



**PRESS WATER ELBOW M/F 90°**

CODE	SIZE	PRICE
8681	15mm	\$5.41
8682	20mm	\$7.11



**PRESS WATER REDUCING COUPLING F/F**

CODE	SIZE	PRICE
8613	20mm x 15mm	\$9.38
8614	25mm x 20mm	\$15.99



**PRESS WATER REDUCER M/F**

CODE	SIZE	PRICE
8615	20mm x 15mm	\$8.41
8616	25mm x 20mm	\$11.94



**PRESS WATER END CAP**

CODE	SIZE	PRICE
8623	15mm	\$7.43
8624	20mm	\$9.00
8625	25mm	\$17.63



**PRESS WATER TEE**

CODE	SIZE	PRICE
8617	15mm	\$7.23
8618	20mm	\$10.89
8619	25mm	\$20.21



**PRESS WATER TEE REDUCING**

CODE	SIZE	PRICE
8620	20 x 20 x 15	\$13.51
8621	25 x 25 x 15	\$19.12
8622	25 x 25 x 20	\$22.96
8683	20 x 15 x 15	\$17.84
8684	20 x 15 x 20	\$18.77



**PRESS WATER ELBOW LUGGED**

CODE	SIZE	PRICE
8626	15mm x 15FI	\$13.36
8627	20mm x 20FI	\$19.05



**BLOCKHEAD PRESS WATER ELBOW LUGGED (90MM)**

CODE	SIZE	PRICE
8699	15mm x 15MI	\$16.35



**PRESS WATER ELBOW FI**

CODE	SIZE	PRICE
8629	15mm x 15FI	\$14.77
8630	20mm x 20FI	\$17.88



**PRESS WATER ELBOW MI**

CODE	SIZE	PRICE
8631	15mm x 15MI	\$14.23
8632	20mm x 20MI	\$17.89



**PRESS WATER ELBOW UNION**

CODE	SIZE	PRICE
8687	15mm x 1/2"	\$9.03
8688	20mm x 3/4"	\$13.64



**PRESS WATER ADAPTOR MI**

CODE	SIZE	PRICE
8633	15mm x 15MI	\$6.95
8680	15mm x 20MI	\$10.60
8634	20mm x 20MI	\$11.47
8635	25mm x 25MI	\$20.52



**PRESS WATER ADAPTOR FI**

CODE	SIZE	PRICE
8636	15mm x 15FI	\$6.59
8637	20mm x 20FI	\$8.41
8638	25mm x 25FI	\$14.99



**PRESS UNION**

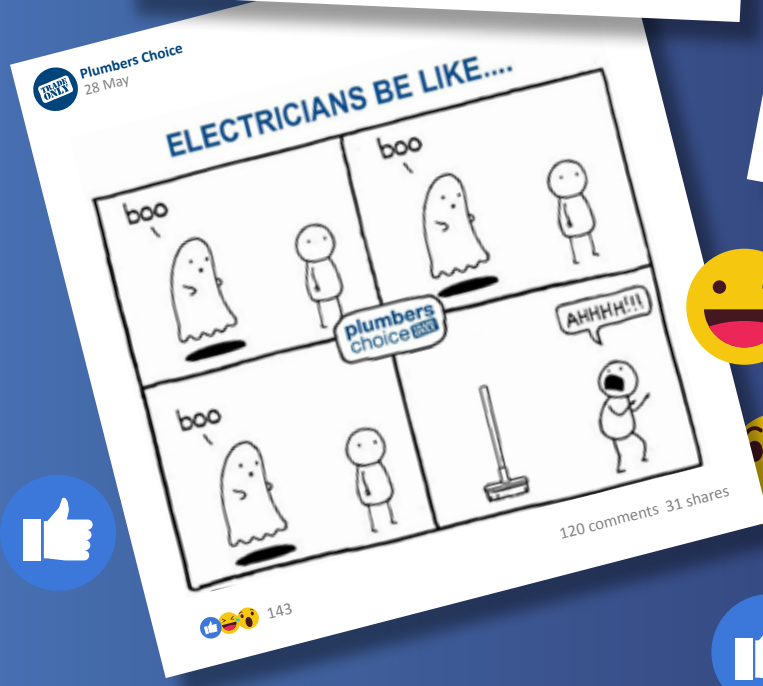
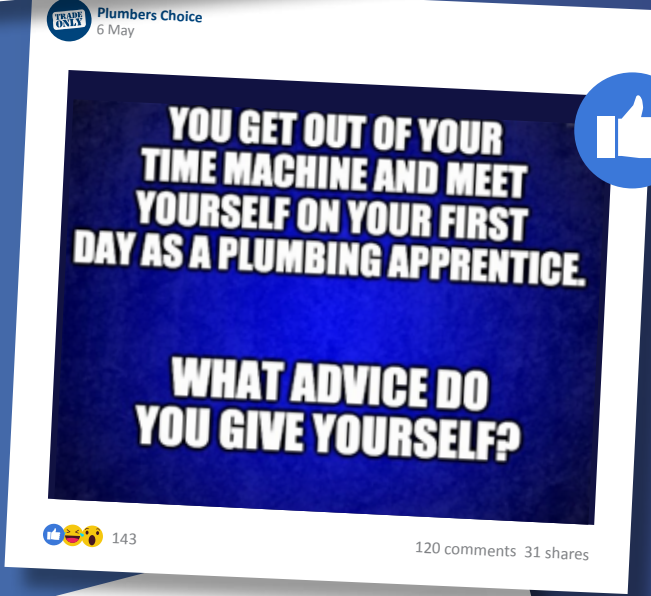
CODE	SIZE	PRICE
8685	15mm Loose Nut x 15mm Press (Flat Seat)	\$11.61
8679	20mm Loose Nut x 20mm Press (Flat Seat)	\$11.75

- Flame-free
- Permanent V-Profile press join
- All fittings comply with Australian Standards AS3688



**66K**  
FOLLOWERS

# Join the **TRADE ONLY** Conversation on **facebook**



# YOU SPOKE, WE LISTENED!

To continue to make things easier for you to support Trade Only, we've made a few additions to [www.plumberschoice.com.au](http://www.plumberschoice.com.au)



ORDER TEMPLATES

## Save Order Templates

You can now save custom Order Templates.

With just one click, add all the items from your Order Template to your shopping cart. Perfect for fit off packs, hottie kits or end of month stock top ups.



FAVOURITES

## Favourite Items

Access to your favourite and most used items on the one page.

No more scrolling through to add the same items you buy every order. Now add them all from the convenience of one page.



QUOTES

## Request a Quote

Want some gear quoted?

Haven't had some items priced up by your Sales Rep yet? Well, from the cart page you can now order or request a quote on the gear in your shopping cart.

## Don't have an online account yet?

Head to [www.plumberschoice.com.au/register/](http://www.plumberschoice.com.au/register/) and sign up today. Order any time from the convenience of your phone or laptop.



TIP OF  
THE  
MONTH

We'll tip  
**YOU**  
when you tip  
**US!**



Every featured story receives a  
**\$200 Store Credit**

Handy tip to make it easier to cut lengths of PVC. Cut out a couple of holes opposite each other in a 20 litre bucket. Slide PVC through, hold in place and cut to length.



Thanks to John from LK Plumbing.  
\$200 store credit is coming your way

To get involved send us an email [info@plumberschoice.com.au](mailto:info@plumberschoice.com.au)

# INTRODUCING THE **NEW** FLUIDMASTER PRO CISTERN

**Most Powerful Flush System**  
Adjustable up to 9/4.5L PRO Cistern  
with Link and Seat

**INSTALL WITH CONFIDENCE**

**SPECIAL**

**\$82.50**  
INC. GST  
CODE: 2089

Includes  
Low Level  
Flush Pipe



4.5/3L Dual Flush Technology  
Simple Flush Volume Conversion  
to 6/3L or 9/4.5L  
UV Resistant - Certified  
Plastic Cistern with Bottom Inlet  
Saves Water

**EQUIPPED WITH FLUIDMASTER TECHNOLOGY**



**Fluidmaster Pro  
Series Cistern  
Inlet Valve**



**Fluidmaster  
Universal Dual  
Flush Outlet Valve**



[www.Fluidmaster.com.au](http://www.Fluidmaster.com.au)





# BOOT GRIP RUN-OUT SALE

**DON'T MISS OUT**

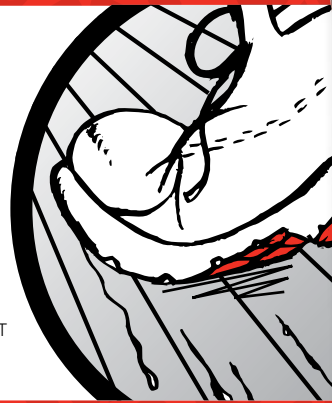
## BOOT GRIP

- Handy, no mess solution for wet and slippery metal roof surfaces

**GRIP. DON'T SLIP**

150 grams

\$28<sup>36</sup> INC. GST  
Code: 1177



**RED BACK**



# DRAIN DYE

**NON TOXIC  
TO THE  
ENVIRONMENT**

- Designed to trace waterflows in sewer & storm water drains
- 40g tub contains:  
20g green & 20g red

1kg Red  
\$232<sup>76</sup> INC. GST  
Code: 9902

1kg Green  
\$232<sup>76</sup> INC. GST  
Code: 2511

40g tub  
\$25<sup>70</sup> INC. GST  
Code: 1947



**RED BACK**



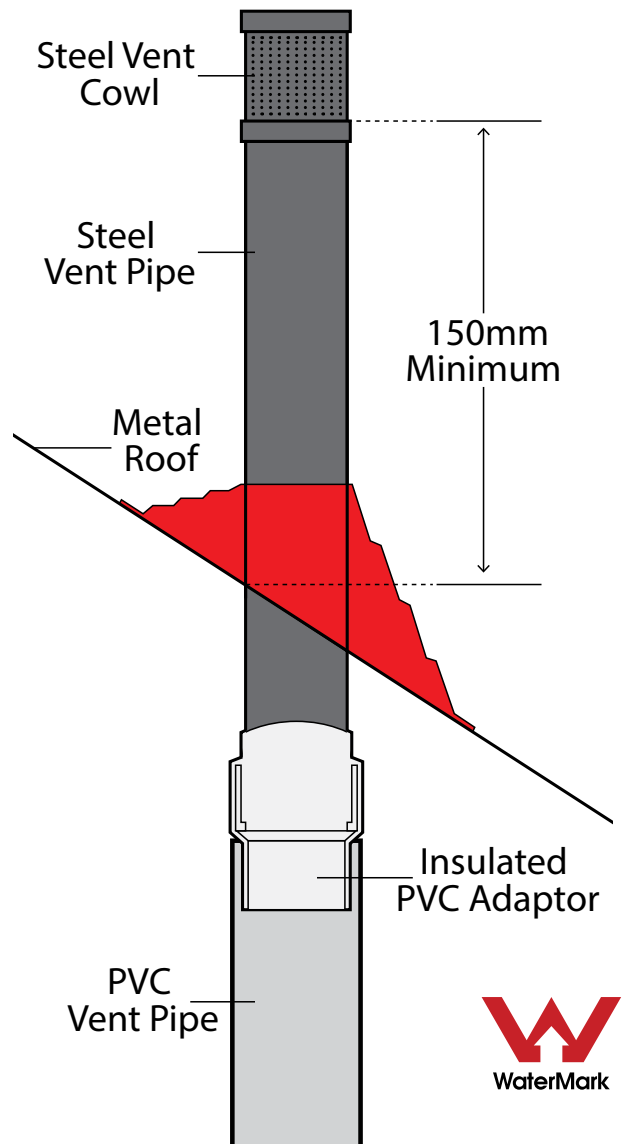
**NEW!**

# BAL RATED DRAINAGE VENT & FLASHING KIT

## Kit includes:

- Steel vent and cowl
- BAL rated flashing to suit steel roof
- Steel to PVC insulated adaptor

**PATENTED**



**BAL12.5**  
Black Flashing Kit

Code: **8876**



**BAL29**  
Red Silicone Kit

Code: **8877**



## Spring Loaded Access Panels



**203 x 203  
Spring Loaded  
Access Panel**

Code 1971 **\$38.84** inc gst



**356 x 356  
Spring Loaded  
Access Panel**

Code 1972 **\$44.84** inc gst

**AQUARIUS**  
DISTRIBUTION

**Easy install snap-in feature  
Paintable surface  
No framing required**

### **200 x 200 Access Panel Hatch Hinged**

Code 1884 **\$32.44** inc gst



### **300 x 300 Access Panel Hatch Hinged**

Code 1885 **\$39.94** inc gst



**AQUARIUS**  
DISTRIBUTION

**Create access to  
plumbing fittings in wall  
Use to repair cut out in  
a plaster wall**

## Hinged Access Panels

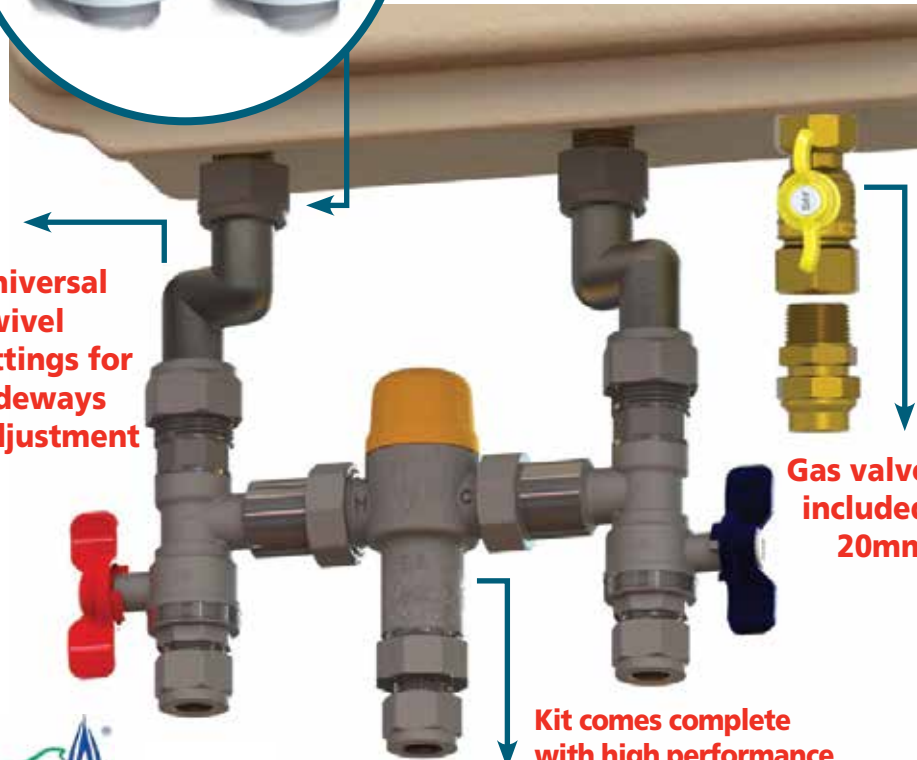


# Quickie Kit



Connections to unit allow for height adjustment

Universal swivel fittings for sideways adjustment



Gas valve included 20mm

Kit comes complete with high performance tempering valve



24 Month warranty



Insulation & cable ties provided to comply with AS3500

**Fit-off a hot water service in minutes!**  
Suits all instantaneous hot water services.

15mm outlet & tempering valve Code: 8300 | 20mm outlet & tempering valve Code: 8301

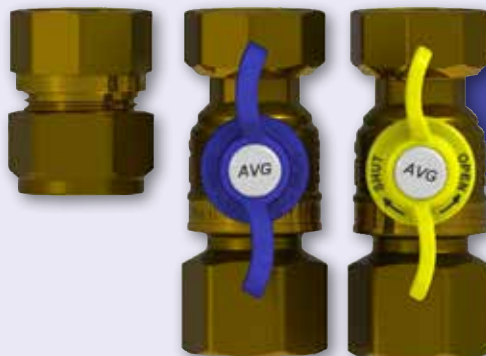
**Andrew from AMT Plumbing in Bayswater said:**

I recently tried the Quickie Kit on an install. I reckon it saved me at least 30-45 minutes. The insulation and cable ties included in the kit made for a nice neat finish. Everything I needed was there.

## Loose Nut Ball Valve Kit with Union

- Gas 20mm loose nut x 20mm female
- Water 20mm loose nut x 20mm female
- Outlet fitting 20Fi x 20C

Code: 8306



**Instantaneous Continuous Flow Kit**





# HIGH PERFORMANCE FLEXIBLE MS SEALANT AND ADHESIVE

**GREY** Code: 8225 • **WHITE** Code: 9845 • **BLACK** Code: 8226



- UV resistant, absorbs acoustic and mechanical vibrations
- Highly flexible with up to 400% elongation
- Sticks and seals all common building materials, even in the wet
- Contains zero solvents and non-bubbling
- +/-25% cyclic expansion and low VOC
- Interior and exterior use

BOSTIKTRADE

BOSTIKTRADE

BOSTIKAUSTRALIA

bostik.com

## ROOF & GUTTER SILICONE



### TRANSLUCENT 300g

- Bostik Quality
- Ideal for sealing sheet metal, roofing & guttering
- Potable water approved AS4020-1999
- Neutral Cure
- Non-Corrosive

Code: 9926

**BOX  
20**

### GREY 300g

- Bostik Quality
- Ideal for sealing sheet metal, roofing & guttering
- Potable water approved AS4020-1999
- Neutral Cure
- Non-Corrosive

Code: 9953

**BOX  
20**

### BLACK 300g

- Bostik Quality
- Ideal for sealing sheet metal, roofing & guttering
- Potable water approved AS4020-1999
- Neutral Cure
- Non-Corrosive

Code: 9812

**BOX  
20**

# ADHESIVE COVER PLATES

**STRONG  
ABS  
PLASTIC**



73mm

**16mm  
PEX Adhesive  
Round**

Pack Qty 10  
Code: 4908



73mm

**1/2" BSP  
Adhesive  
Round**

Pack Qty 10  
Code: 4909



100mm

**40mm PVC  
Pipe Adhesive  
Round**

Pack Qty 10  
Code: 1198



100mm

**50mm PVC  
Pipe Adhesive  
Round**

Pack Qty 10  
Code: 1197



128mm

**1/2" BSP  
Adhesive  
Oval**

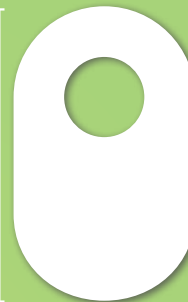
Pack Qty 10  
Code: 1181



200mm

**40mm  
PVC Pipe  
Adhesive  
Oval**

Pack Qty 10  
Code: 1196

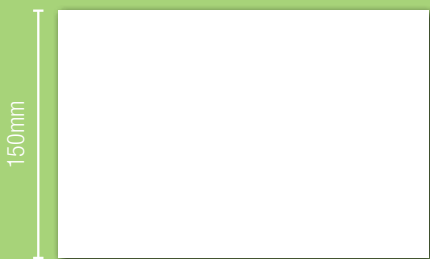


200mm

**50mm  
PVC Pipe  
Adhesive  
Oval**

Pack Qty 10  
Code: 1195

**NEW**



150mm

240mm

**Adhesive Patch**

Pack Qty 1  
Code: 1199



**Adhesive back  
for quick & easy installation**

- White to match inside of cupboard
- Great for covering drilling errors

- For a professional finish inside the cupboard.
- Flexy Flange cupboard plate fits tight to pipe which makes it ant-proof.

# 1 Flexy Flange Fits 4 Sizes!



80mm

Suits 9-22mm pipe

**Small**

Pack Qty 10

**\$22.64** INC. GST

Code: 8250

**PATENTED**



90mm

Suits 22-44mm pipe

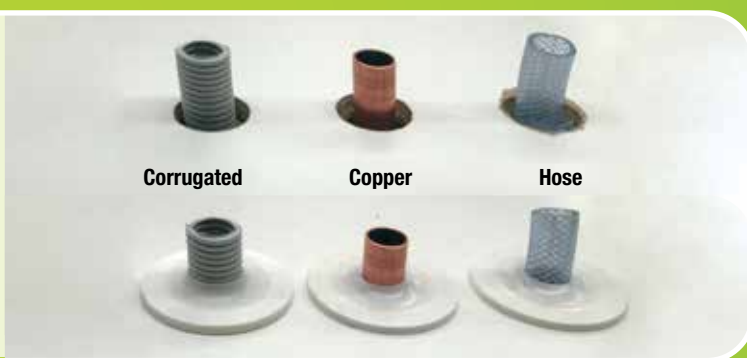
**Medium**

Pack Qty 5

**\$15.04** INC. GST

Code: 8252

**PATENTED**



105mm

Suits 40-60mm pipe

**Large**

Pack Qty 5

**\$16.74** INC. GST

Code: 9968

**PATENTED**



115mm

170mm

Suits 40-60mm pipe

**Rectangle**

Pack Qty 5

**\$22.26** INC. GST

Code: 2202

**PATENTED**



# RECYLED WATER KITS

## RECYLED WATER KIT

### HOSE TAP WITH ELBOW 18mm

- 5/8" Female Hose Bib Anti-Vandal
- 5/8" Male 180mm x 3/4" BSP Female Extended Lugged Elbow
- Includes: 5/8" Brass Cap, A/Vandal Key, Cover plate & Sign
- L/H Thread
- Commonly installed within Victoria

CODE: 4915



## RECYLED WATER DO NOT DRINK METAL SIGN

LILAC ON WHITE 100x75mm



- Commonly Used NSW, VIC
- Metal 100mm x 75mm
- Recycled Do Not Drink

CODE: 2522

## RECYLED HOSE COCK KIT

### WITH HOSE ADAPTOR, KEY & SIGN

- 3/4" Male Hose Bib Anti-Vandal
- Includes: Hose Adaptor, A/Vandal Key & Sign
- Commonly installed within NSW

CODE: 4914



## RECYLED WASHING MACHINE KIT

- 5/8" Female X 3/4" Male Washing Machine Stop
- 5/8" Male x 3/4" BSP Female 19BP Lugged Elbow 90mm Long
- Includes: 5/8" Brass Cap, Cover plate

CODE: 4916



## RECYLED LOOSE NUT WASHING MACHINE KIT

With Lugged Elbow 90mm

- 5/8" Female X 3/4" Male Loose Nut Washing Machine Stop
- 5/8" Male x 3/4" BSP Female 19BP Lugged Elbow 90mm Long
- Includes: 5/8" Brass Cap, Cover plate

CODE: 4917





# SPECIAL

## STOP TAPS



### STOP TAP LOOSE NUT

- Loose nut for ease of installation
- Ceramic Disc
- Unique rubber cone makes installation quick and simple
- Ideal for confined spaces
- Confirms AS3718

CODE: 6587  
**\$5.50**  
INC. GST



### STOP TAP LOOSE NUT WASHING MACHINE

- Loose nut for ease of installation
- Ceramic Disc
- Unique rubber cone makes installation quick and simple
- Ideal for confined spaces
- Confirms AS3718

CODE: 6590  
**\$9.90**  
INC. GST



### STOP TAP LOOSE NUT TRI VALVE

- Loose nut for ease of installation
- Ceramic Disc
- Unique rubber cone makes installation quick and simple
- Connect tap and dishwasher with single fitting
- Ideal for confined spaces
- Confirms AS3718

CODE: 6251  
**\$16.50**  
INC. GST

Valid until 31st August 2021



# CARBON MONOXIDE ANALYSER

- Suitable for testing as per VBA Carbon Monoxide Safety Program
- Measures carbon monoxide in ambient applications as well as high heat flue situations
- Measures 0 ~ 10,000 ppm CO
- Save and recall readings with time and date stamp
- Pump driven
- 1 PPM sensitivity
- Infrared port for use with optional A740 IR printer

Code: 8020



**NEW**

**COMES IN STURDY CARRY CASE**

**FREE SMOKE PEN WITH ANALYSER**  
Valid until August 31st 2021



## SMOKE PEN

**NEW**



**\$86.26** INC. GST  
Code: 9837



- Specified for carbon monoxide testing
- Ideal for testing the slightest air movement & gas spillage
- HVAC air movement or leakage checks
- Comes with 6 smoke wicks
- Refill packs of wicks available
- Non-toxic

As seen on VBA Training video [www.vba.vic.gov.au/carbon-monoxide-safety-program](http://www.vba.vic.gov.au/carbon-monoxide-safety-program)

**CHS** CHRIS HUNTER SALES

# EXTENDO

GAS CONNECTOR

**F + F NOW AVAILABLE**

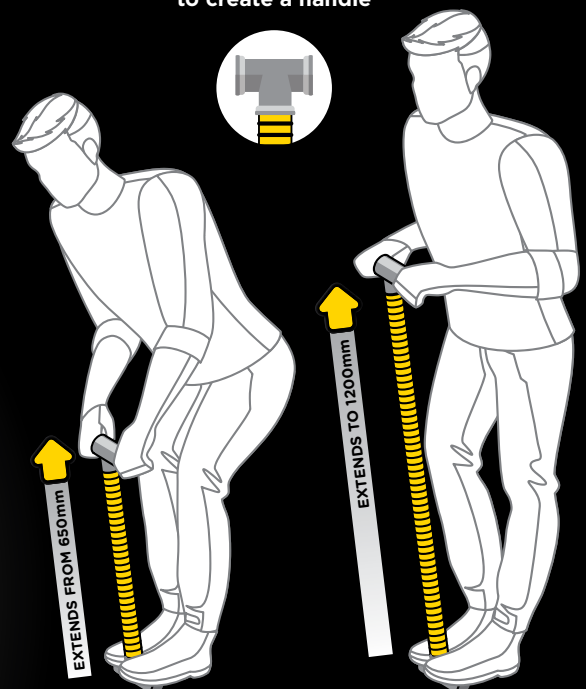


**BROMIC**  
PLUMBING & GAS

Extendable  
from **650mm**  
to **1200mm**

- ✓ Saves Space, **ONE Connector does it all!**
- ✓ 12mm internal bore for better gas flow
- ✓ Flame resistant stainless steel
- ✓ AGA Approved 8633G
- ✓ 1/2" M+F
- ✓ 1/2" F+F

**HANDY TIP:**  
Attach a brass tee to either end  
to create a handle



BOX  
10

**\$246.78**  
INC. GST

M+F Code: 6176  
F+F Code: 6178

## Meter Tapping Kit 20mm Flared Comp



- Working temperature -20°C to 120°C
- Maximum pressure rating 2500 Kpa
- DR Brass



### KIT INCLUDES

- 20mm Flare Right Angle Lockable
- Meter Stop
- 20mm MI Flare Elbow
- 20mm F&F Dual Check Valve

**\$50<sup>38</sup>**

Code: 5357  
INC. GST

**NEW**

## Meter Tapping Kit 20mm Flared Comp M&F Dual Check



- Working temperature -20°C to 120°C
- Maximum pressure rating 2500 Kpa
- DR Brass



### KIT INCLUDES

- 20mm Flare Right Angle Lockable Meter Stop
- 20mm MI Flare Elbow
- 20mm M&F Dual Check Valve

**\$51<sup>48</sup>**

Code: 5358  
INC. GST

## Pressure Reduction Valve 20mm RA AVG Flared Preset 500kPa



**NEW**

- Preset 500kPa
- 2 year warranty
- Watermarked
- 20mm (3/4 inch) BSP female by flared compression
- Conforms AS1357-2 LIC No. 2639
- Stainless Steel Seat

**\$76<sup>38</sup>**

Code: 3609  
INC. GST

## Pressure Reduction Valve 20mm RA AVG Preset 500kPa



- Preset 500kPa
- 2 year warranty
- Watermarked
- 20mm (3/4 inch) BSP female by copper olive compression
- Conforms AS1357-2 LIC No. 2639
- Stainless Steel Seat

**\$76<sup>38</sup>**

Code: 3602  
INC. GST

# Jacko's Review



## Spindle Access Drill

Cuts tiles to allow access to tap body



**SPECIAL**

**\$128.33**  
INC. GST

Code: 1916

**SAVE \$65.12**

Really handy tool. Got us out of some trouble when we had to fix a handy man's rough in job where he also tiled over existing tiles!

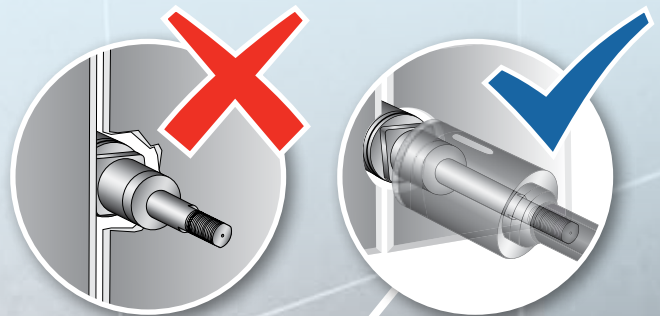
Declan from Declan Smith Plumbing

Quality tool, use it regularly. Great and easy to use.

John from Icon Plumbing & Gas Fitting

Great tool. Does exactly what it is supposed to do. Cuts tiles, tube spanner goes in to get spindles out. Easy!

Dave from Dave The Plumber



**plumtool™**

# STEEL STUDWORK?

plumbers choice

HAS THE ANSWERS!

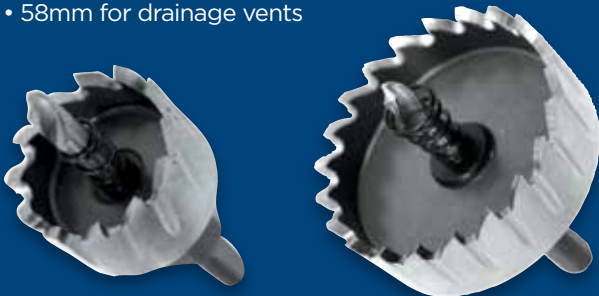


34MM  
AND  
58MM



## STEEL STUD DRILL

- Also great in roofing work for overflows, etc
- 34mm to suit yellow grommets
- 58mm for drainage vents



34mm

58mm

\$70<sup>55</sup>

INC. GST

Code: 2000

\$152<sup>09</sup>

INC. GST

Code: 2001



## STUD CLIPS

- WITH SD SCREW

- Works in any size hole

BAG  
100

16MM  
AND  
20MM



16mm

20mm

\$29<sup>08</sup>

INC. GST

Code: 5571

\$30<sup>89</sup>

INC. GST

Code: 5572



**\$599<sup>37</sup>**  
INC. GST  
Code: 1914

### STUD PUNCH

- For the plumber in a hurry!
- Designed for cutting holes in steel stud work
- Cuts holes super fast



BAG  
100

**\$427<sup>4</sup>**  
INC. GST  
Code: 9241



### MULTI-FIT GROMMET

Works in varying thicknesses of studwork (thickness 0.42mm to 2mm)  
Complies to Australian Standards AS3500.1 12 Clause 5.5 2.2 Part C



**ONE CLIP FITS 16MM - 20MM PEX PIPE**



BAG  
100



**\$331<sup>9</sup>**  
INC. GST  
Code: 5558

**DUALPEX CLIP SD SCREW**

BAG  
100



**\$355<sup>9</sup>**  
INC. GST  
Code: 5575

**DUALPEX CLIP SD SCREW WITH TAB**

BAG  
100



16mm  
Code: 4526 **\$33.17**  
20mm  
Code: 4527 **\$36.71**

**PEX SADDLES SD SCREW WITH TAB**

### PRELOADED

WITH HEX SD SCREWS  
Code: 1471



330mm - 600mm

### UNLOADED

Code: 1450



330mm - 600mm

### MINI PRELOADED

WITH BUGLE SCREWS  
Code: 1474



190mm - 330mm

### FASTANOG

- Faster than timber noggins
- Compulsory in termite areas
- Set back measurer



preloaded  
set back  
measurer

**SLIDE TO ADJUST LENGTH**



# RURAL



**POLY RURAL  
COUPLING**

CODE	SIZE	PRICE
7101	20mm	\$11.71
7102	25mm	\$15.37



**POLY RURAL  
ADAPTOR MALE**

CODE	SIZE	PRICE
7103	20mm - 3/4"	\$7.94
7104	25mm - 1"	\$10.17



**POLY RURAL  
ADAPTER FEMALE**

CODE	SIZE	PRICE
7105	25mm - 1"	\$11.31



**POLY RURAL  
TEE**

CODE	SIZE	PRICE
7106	25 - 25 - 25	\$25.93

# METRIC



**POLY METRIC  
TEE PE-CU**

CODE	SIZE	PRICE
7135	25mm - 1/2"	\$27.99
7136	25mm - 3/4"	\$30.56



**POLY METRIC  
ELBOW PE-CU**

CODE	SIZE	PRICE
7137	25mm - 1/2"	\$24.10
7138	25mm - 3/4"	\$24.33



**POLY METRIC  
CONNECTOR PE-CU**

CODE	SIZE	PRICE
7139	20mm - 3/4"	\$15.08
7140	25mm - 3/4"	\$15.42
7176	25mm - 1/2"	\$15.42



**POLY METRIC  
TEE FEMALE**

CODE	SIZE	PRICE
7141	25 - 1/2" - 25	\$16.56
7142	25 - 3/4" - 25	\$16.97
7143	25 - 1" - 25	\$17.36



**POLY METRIC  
ELBOW**

CODE	SIZE	PRICE
7158	25mm - 25mm	\$13.13
7159	32mm - 32mm	\$22.28



**POLY METRIC  
REDUCER**

CODE	SIZE	PRICE
7160	25mm - 20mm	\$11.99
7161	32mm - 25mm	\$16.85



**POLY METRIC  
END PLUG**

CODE	SIZE	PRICE
7162	25mm	\$8.22



**POLY METRIC  
ELBOW FEMALE**

CODE	SIZE	PRICE
7163	25mm - 3/4"	\$12.40
7164	25mm - 1"	\$11.31
7165	32mm - 1"	\$17.43
7166	32mm - 1 1/4"	\$17.71



# POLY COMPRESSION FITTINGS



**POLY RURAL  
ELBOW**

CODE	SIZE	PRICE
7107	25mm - 25mm	\$18.39



**POLY RURAL  
TEE FEMALE CENTRE**

CODE	SIZE	PRICE
7108	25 - 1" - 25	\$20.74



**POLY RURAL  
FEMALE ELBOW**

CODE	SIZE	PRICE
7109	20mm - 3/4"	\$11.37
7110	25mm - 3/4"	\$14.96
7111	25mm - 1"	\$15.37

- Captive O'Ring
- Largest Fitting Range
- Same Design for over 40 years
- AS4129



**POLY METRIC  
COUPLING**

CODE	SIZE	PRICE
7144	20mm	\$11.20
7145	25mm	\$11.36
7146	32mm	\$16.79



**POLY METRIC  
ADAPTOR MALE**

CODE	SIZE	PRICE
7147	20mm - 3/4"	\$6.69
7148	25mm - 3/4"	\$7.08
7149	25mm - 1"	\$7.94
7150	32mm - 1"	\$10.85
7151	32mm - 1 1/4"	\$11.99



**POLY METRIC  
ADAPTOR FEMALE**

CODE	SIZE	PRICE
7152	25mm - 3/4"	\$9.25
7153	25mm - 1"	\$10.11
7154	32mm - 1"	\$11.71
7155	32mm - 1 1/4"	\$15.88



**POLY METRIC  
TEE**

CODE	SIZE	PRICE
7156	25 - 25 - 25	\$16.57
7157	32 - 32 - 32	\$33.01



**POLY METRIC WALL PLATE  
LUGGED ELBOW FEMALE**

CODE	SIZE	PRICE
7167	25mm - 3/4"	\$20.40



**POLY METRIC  
ELBOW MALE**

CODE	SIZE	PRICE
7168	25mm - 3/4"	\$11.65
7169	25mm - 1"	\$14.00
7170	32mm - 1"	\$19.99
7171	32mm - 1 1/4"	\$20.33



**POLY METRIC  
SLIP REPAIR COUPLING**

CODE	SIZE	PRICE
7172	25mm	\$14.00
7173	32mm	\$19.60



**POLY UNIVERSAL  
SLIP REPAIR COUPLING**

CODE	SIZE	PRICE
7174	24mm - 28mm	\$74.54
7175	31mm - 35mm	\$92.99

# THERMOCOUPLE TESTING AND TOOL KIT

plumtool



This kit includes spanners to suit any thermocouple and also includes a testing device to determine if the existing thermocouple is still working.

Testing and replacement made easy

\$227<sup>69</sup> INC. GST  
Code: 5301

**SPECIAL**

Code: 8005

**10 FREE THERMOCOUPLES WITH EVERY PURCHASE**



1  
Unscrew the existing thermocouple from the control unit of the appliance.



2  
Fit the end of the thermocouple into the tester. (If you need to use the universal bush provided, you may need to gently flatten a section of the thermocouple tube to slip the bush on)



3  
Light the pilot using the normal method for the appliance.



4  
Whilst continuing to hold down the button on the appliance for 20 seconds, depress the spring on the testing device at the same time.



5  
Release pressure on the thermocouple testing device spring only.



If the spring on the testing device remains closed then the thermocouple is working and power is being supplied to the electro-magnet in the testing device. If the spring releases while the pilot light is on, then the thermocouple is faulty and should be replaced.

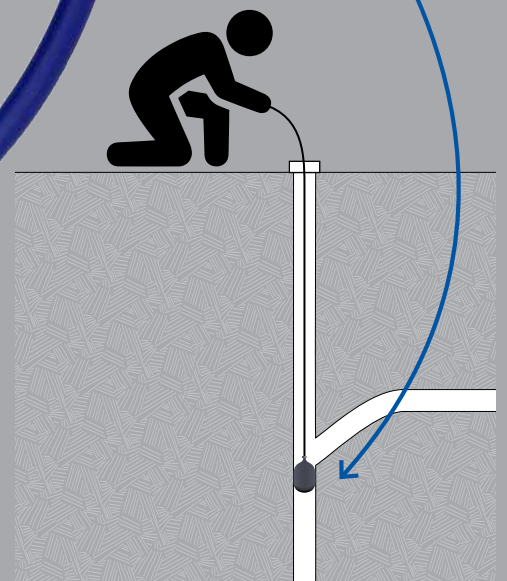
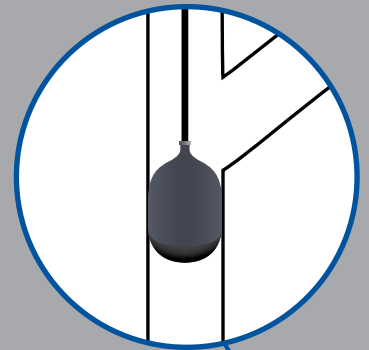
## INFLATABLE TEST PLUG 100MM

- Equipped with 2.5m hose
- To suit 100mm PVC
- Inflate with car pump
- Can be used down an inspection shaft

Code: 2009

\$105.67

Equipped with  
2.5m hose



## TEST PLUG ALUMINIUM 100MM

- A breeze to install
- 2 convenient tie-off points
- Size 100mm

Code: 2149

\$52.84



## TEST PLUG RIGHT ANGLED WITH HANDLES 100mm

- Keeps hands out of the drain
- A breeze to install
- Cannot be lost down drain
- The only plug to use when testing at a right angled junction
- Cast Aluminium
- Patented

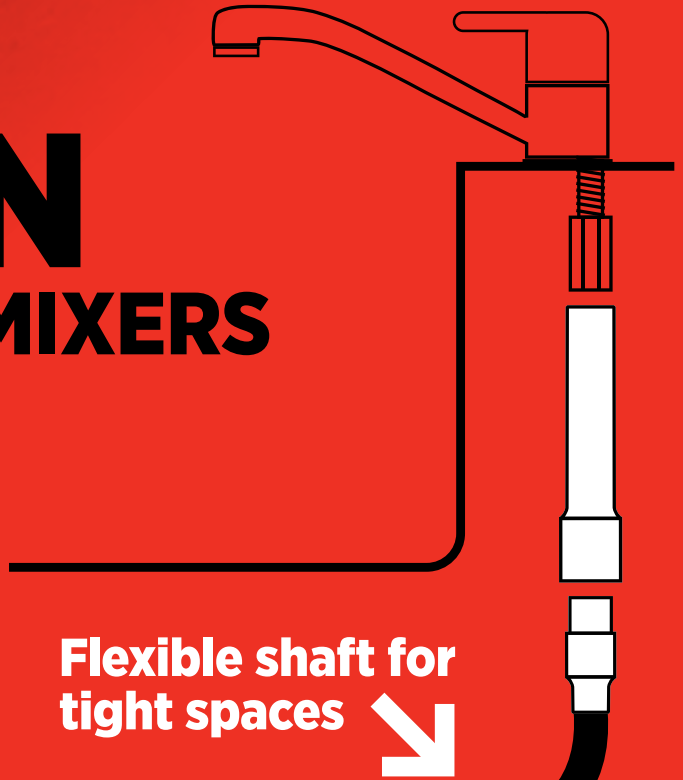
Code: 2004

\$153.16

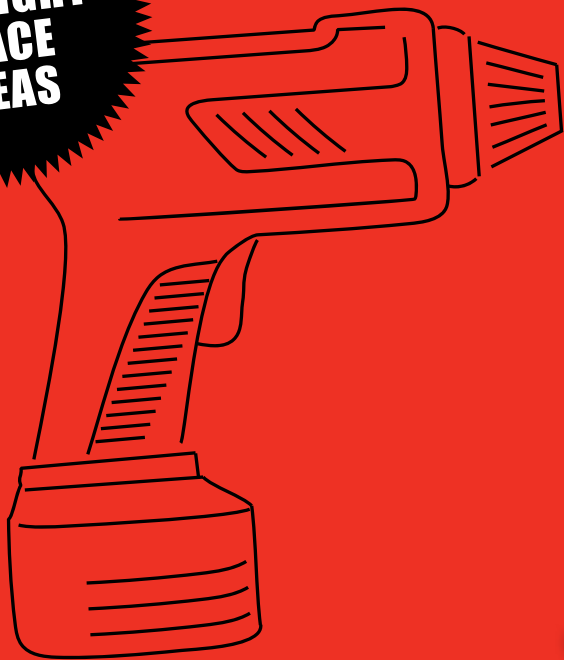


plumtool™

# TIGHTEN BASIN & SINK MIXERS FAST



**IDEAL  
FOR TIGHT  
SPACE  
AREAS**



**Extra long  
sockets (120mm)**

## FLEXIBLE MIXER TAP DRIVER KIT

**Kit Contains:**

- 3/8 Flexible Drive (200mm long)
- 3/8 Hex Adaptor (40mm long)
- 3/8 Drive Socket Set;  
9mm x 120mm, 10mm x 120mm,  
11mm x 120mm, 12mm x 120mm,  
13mm x 120mm



**\$108.08** INC. GST

Code: 9828