

# plumbers choice **TRADE ONLY**

plumbers  
choice **TRADE  
ONLY**

## BRINGING

# INNOVATIVE

## PRODUCTS TO MARKET



489 Mountain Highway, Bayswater, VIC 3153

Email: [info@plumberschoice.com.au](mailto:info@plumberschoice.com.au) • Ph: (03) 9720 8274

[www.plumberschoice.com.au](http://www.plumberschoice.com.au)





# Luke's Editorial

## INNOVATIVE PRODUCTS

### All part of the Trade Only advantage

At Plumbers Choice our focus is on making the working lives of plumbers easier. Because of our Trade Only passion, we are always on the look out for new products that make plumbers' work easier or more efficient.

We believe that we have developed a reputation for bringing innovative products to market across the whole country. We have also been effective in passing on information to our suppliers to assist them in developing improved and new offerings. In this edition of the newsletter we are highlighting some of the innovative products that we have been instrumental in bringing to the market.

This month we are asking plumbers for their ideas on products they would like to see available. Some plumbers may even have products they have begun to develop themselves and would like assistance to get their ideas to market. We are keen to get involved or at the very least point you in the right direction.

I look forward to hearing from you.

**LUKE BOLTON - DIRECTOR, PLUMBERS CHOICE**



## HOW TO ORDER



**Online - 24 hours**  
[www.plumberschoice.com.au](http://www.plumberschoice.com.au)



**Email - 24 hours**  
[sales@plumberschoice.com.au](mailto:sales@plumberschoice.com.au)



**Phone - Business Hours**  
(03) 9720 8274  
Our knowledgeable staff will take your order.



**At our Trade Outlets**  
Monday - Friday  
489 Mountain Highway, Bayswater, VIC 3153  
4/200 Woodpark Road, Smithfield, NSW 2164



**Personal Sales Rep**  
Your personal Sales Representative is able to tailor our service to suit your needs.



**Shop Trade Only from the palm of your hand!**

plumbers  
choice **TRADE ONLY**

**BRINGING**

# **INNOVATIVE PRODUCTS TO MARKET**

**NEW!**

## **BAL RATED DRAINAGE VENT & FLASHING KIT**

### **Kit includes:**

- Steel vent and cowl
- BAL rated flashing to suit steel roof
- Steel to PVC insulated adaptor

**BAL12.5**  
Black Flashing Kit

Code: **8876**



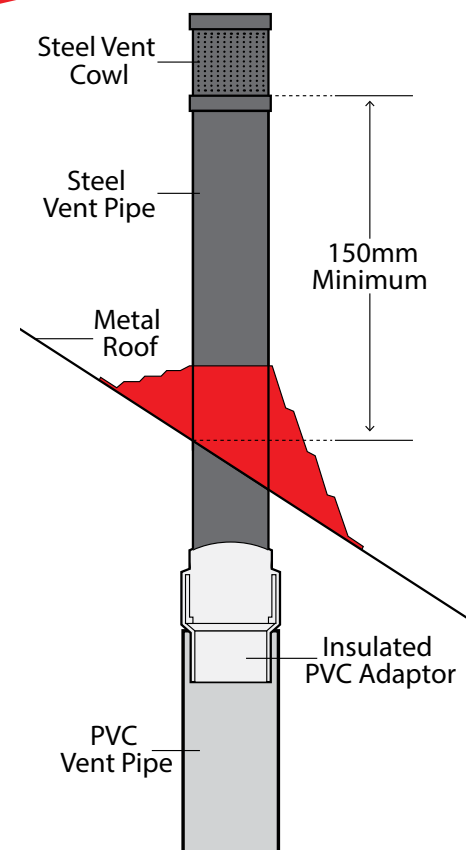
**BAL29**  
Red Silicone Kit

Code: **8877**



**PATENTED**

**AQUARIUS**  
DISTRIBUTION



plumbers  
choice **TRADE ONLY**

# BRINGING INNOVAT



### RED BACK TAP LUBRICANT

- Working range of between -10°C and 150°C
- Approved for potable water
- 70 gram

Code: 9996

\$18.08  
INC. GST



### PLUMTOOL BREECH STRAIGHTENER

- For straightening tap breeches prior to fit off
- Reverse tool to straighten 1/2 B.S.P. lugged elbows
- Patented

Code: 2395

\$63.07  
INC. GST



### PLUMTOOL TAP FLANGE REMOVER

- Use with your hand to increase grip x 3
- Grips any shaped flange
- Use very carefully with round jaw multi-grips to remove stubborn flanges
- Be sure to grab the rubber on the flap area

Code: 8539

\$18.39  
INC. GST



### PLUMTOOL LONG NOSE PLIERS

- 270mm long, twice the reach of standard pliers
- Will remove tap washers from even the deepest breeches
- Thin profile to fit into tap bodies

Code: 1667

\$45.04  
INC. GST

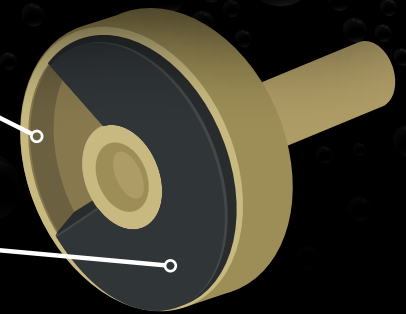
# LIVE PRODUCTS TO MARKET

# WOMBAT

Australian Designed  
 Brass Shroud prevents spreading and splitting  
 Tough NP3 compound which is heat resistant and hardwearing  
 Passes 100,000 cycle test  
 Complies with AS3718

Protective Brass Shroud

Unique NP3 Compound



**10 Pack**  
Code: 8810

**100 Pack**  
Code: 8811



**PLUMTOOL SPINDLE ACCESS DRILL**

- Cuts tiles to allow access to tap body
- Diamond core drill will cut even the hardest of porcelain tiles
- Nylon bush prevents damage to the spindle
- Patented

Code: 1916 **\$193.44** INC.GST



**STRONGEST ON MARKET**

**PLUMTOOL TUBE SPANNER KIT**

- Will not round out under stress
- Kit Contains:  
 Hex 20mm x 21mm,  
 Hex 22mm x 23mm,  
 Hex 29mm x Square 24mm,  
 Hex 25mm & Hex 28mm,  
 Turning Bar 230mm
- Made in Germany

Code: 2513 **\$191.44** INC.GST



**PLUMTOOL TAP HANDLE PULLER**

- Unique shroud stops slipping
- Holes in arms allow for removal of ezy clean handles
- A must for maintenance plumbers

Code: 1758 **\$72.44** INC.GST

plumbers  
choice **TRADE ONLY**

BRINGING **INNOVATION**

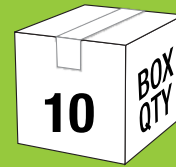
**COMPLETE**  
COVER PLATES

# DISHWASHER COVER PLATES



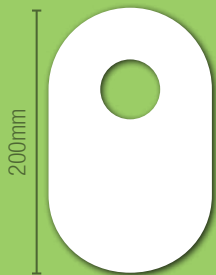
- Leave a neat finish in the cupboard
- Keeps pests out
- Fits over the solenoid valve

Code: 1792 \$14.58 INC. GST



## ADHESIVE COVER PLATES

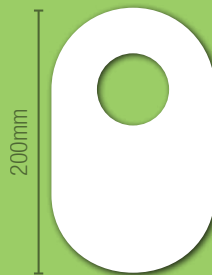
**STRONG  
ABS  
PLASTIC**



**40mm  
PVC Pipe  
Adhesive  
Oval**

Pack Qty 10

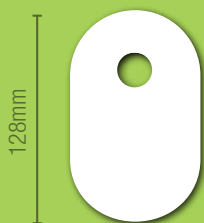
**\$34.99** INC. GST  
Code: 1196



**50mm  
PVC Pipe  
Adhesive  
Oval**

Pack Qty 10

**\$34.99** INC. GST  
Code: 1195



**1/2" BSP  
Adhesive  
Oval**

Pack Qty 10

**\$24.93** INC. GST  
Code: 1181

**NEW**

## METAL COVER PLATES

**STAINLESS STEEL**

**NEW**



**34mm Rise  
1/2" BSP**

Pack Qty 1

Code 1649

**\$11.26** INC. GST



**BRASS**

**Rough Brass  
1/2" BSP**

Pack Qty 1

Code 4016

**\$14.58** INC. GST



**Rough Brass  
3/4" BSP**

Pack Qty 1

Code 4017

**\$14.58** INC. GST

# LIVE PRODUCTS TO MARKET



"For the professional plumber"

STEP 1



STEP 2



STEP 3



STEP 4



BEFORE

AFTER

## FLEXYFLANGES CUPBOARD PLATES

Flexy Flange cupboard plate fits tight to pipe which makes it ant-proof and provides a professional finish.

170mm

115mm

**Rectangle**  
Suits 40-60mm pipe  
Pack Qty 5  
\$22.27 INC. GST  
Code: 2202

80mm

**Small**  
Suits 9-22mm pipe  
Pack Qty 10  
\$22.64 INC. GST  
Code: 8250

90mm

**Medium**  
Suits 22-44mm pipe  
Pack Qty 5  
\$15.04 INC. GST  
Code: 8252

105mm

**Large**  
Suits 40-60mm pipe  
Pack Qty 5  
\$16.75 INC. GST  
Code: 9968

Finally a luggie that can be pressed when screwed in place

Matt - MWP & E

I hate cutting noggins, what's not to like?

Tim - Jonesy's Plumbing

SAME PRICE AS A TRADITIONAL LUGGIE!



**Traditional Fix**  
Plumbers Noggin



**Stud Fix**  
Fix to side of studs



**Existing Noggin**  
Fix to carpenters noggin

## PRESS BALL VALVES

**25**  
YEAR  
WARRANTY

\$22.34  
INC. GST

Code: 8590

**PRESS BALL VALVE WATER  
15MM SOCKET X SOCKET**

- Stainless steel handle and nut
- 25 year warranty\*
- Permanent V-Profile press join, Flame free
- Complies with Australian Standards AS3688



\$28.21  
INC. GST

Code: 8591

**PRESS BALL VALVE WATER  
20MM SOCKET X SOCKET**

- Stainless steel handle and nut
- 25 year warranty\*
- Permanent V-Profile press join, Flame free
- Complies with Australian Standards AS3688



\$22.34  
INC. GST

Code: 8592

**PRESS BALL VALVE WATER  
15MM FI X SOCKET**

- Stainless steel handle and nut
- 25 year warranty\*
- Permanent V-Profile press join, Flame free
- Complies with Australian Standards AS3688



\$28.21  
INC. GST

Code: 8593

**PRESS BALL VALVE WATER  
20MM FI X SOCKET**

- Stainless steel handle and nut
- 25 year warranty\*
- Permanent V-Profile press join, Flame free
- Complies with Australian Standards AS3688





# LIVE PRODUCTS TO MARKET

**BLOCK  
HEAD**

## BLOCKHEAD LUGGED ELBOW

- Reduce the number of noggins required
- Can press it while in place
- Fix it from any direction
- Lead-free brass
- 25 year warranty

Code: 1792



Blockhead Press  
Water Elbow Lugged  
15mm x 15MI (90mm)

Code: 8699

Blockhead Press  
Gas Elbow Lugged  
15mm x 15MI (90mm)

Code: 8698



**PATENTED**

**KIT**



### PRESS UNION BALL VALVE KIT 20MM GAS X 15MM WATER

- Lead-free
- Loose nut union connection for fast and easy installation and servicing
- Full flow ball with robust handle
- Flared and Press complete range available
- Teflon flat seal washer
- AS/NZS 4020 Compliant Kits include Ball valves for both gas and water and outlet fitting

\$79.96  
INC. GST

Code: 8551

**KIT**



### PRESS UNION BALL VALVE KIT 20MM

- Lead-free
- Loose nut union connection for fast and easy installation and servicing
- Full flow ball with robust handle
- Flared and Press complete range available
- Teflon flat seal washer
- AS/NZS 4020 Compliant Kits include Ball valves for both gas and water and outlet fitting

\$79.96  
INC. GST

Code: 8552



PLUMBING SUPPLIES SPECIALIST

## PRESS GAS FITTINGS



**PRESS GAS COUPLING**

CODE	SIZE	PRICE
8639	15mm	\$6.26
8640	20mm	\$8.04
8641	25mm	\$13.75



**PRESS GAS SLIP REPAIR COUPLING**

CODE	SIZE	PRICE
8642	15mm	\$6.00
8643	20mm	\$7.54
8644	25mm	\$11.69



**PRESS GAS ELBOW F/F 90°**

CODE	SIZE	PRICE
8645	15mm x 90	\$7.44
8646	20mm x 90	\$9.72
8647	25mm x 90	\$17.86



**PRESS GAS ELBOW F/F 45°**

CODE	SIZE	PRICE
8648	20mm x 45	\$11.60
8649	25mm x 45	\$15.46



**PRESS GAS REDUCING COUPLING F/F**

CODE	SIZE	PRICE
8650	20mm x 15mm	\$11.11
8651	25mm x 20mm	\$13.70



**PRESS GAS REDUCER M/F**

CODE	SIZE	PRICE
8652	20mm x 15mm	\$9.71
8653	25mm x 20mm	\$13.12



**PRESS GAS TEE**

CODE	SIZE	PRICE
8654	15mm	\$8.59
8655	20mm	\$14.81
8656	25mm	\$23.15



**PRESS GAS TEE REDUCING**

CODE	SIZE	PRICE
8657	20 x 20 x 15	\$15.29
8658	25 x 25 x 15	\$23.52
8659	25 x 25 x 20	\$26.00



**PRESS GAS END CAP**

CODE	SIZE	PRICE
8660	15mm	\$8.10
8661	20mm	\$9.13
8662	25mm	\$16.08



**PRESS GAS ELBOW LUGGED**

CODE	SIZE	PRICE
8663	15mm x 15FI	\$18.40
8664	20mm x 20FI	\$20.12



**BLOCKHEAD PRESS GAS ELBOW LUGGED (90MM)**

CODE	SIZE	PRICE
8698	15mm x 15MI	\$19.04



**PRESS GAS ADAPTOR MI**

CODE	SIZE	PRICE
8666	15mm x 15MI	\$5.51
8667	20mm x 20MI	\$13.59
8668	25mm x 25MI	\$21.39



**PRESS GAS ADAPTOR FI**

CODE	SIZE	PRICE
8669	15mm x 15FI	\$7.44
8670	20mm x 20FI	\$11.32
8671	25mm x 25FI	\$15.43

## 25 YEAR WARRANTY\*

Brasshards is proud to offer a 25 year warranty against defects and manufacturing faults in CuPress fittings (when installed in accordance with national, state and local plumbing codes by a licensed plumber). Issues arising from incorrect installation, misuse or environmental elements are not covered by this warranty. Please contact Brasshards for a copy of our full warranty document.

# PRESS WATER FITTINGS



**PRESS WATER COUPLING**

CODE	SIZE	PRICE
8601	15mm	\$4.13
8602	20mm	\$6.13
8603	25mm	\$8.70



**PRESS WATER SLIP REPAIR COUPLING**

CODE	SIZE	PRICE
8604	15mm	\$4.68
8605	20mm	\$7.19
8606	25mm	\$10.52



**PRESS WATER ELBOW F/F 90°**

CODE	SIZE	PRICE
8607	15mm x 90	\$4.68
8608	20mm x 90	\$7.19
8609	25mm x 90	\$13.24



**PRESS WATER ELBOW F/F 45°**

CODE	SIZE	PRICE
8610	15mm x 45	\$5.86
8611	20mm x 45	\$8.08
8612	25mm x 45	\$14.87



**PRESS WATER ELBOW M/F 90°**

CODE	SIZE	PRICE
8681	15mm	\$5.41
8682	20mm	\$7.11



**PRESS WATER REDUCING COUPLING F/F**

CODE	SIZE	PRICE
8613	20mm x 15mm	\$9.38
8614	25mm x 20mm	\$15.99



**PRESS WATER REDUCER M/F**

CODE	SIZE	PRICE
8615	20mm x 15mm	\$8.41
8616	25mm x 20mm	\$11.94



**PRESS WATER END CAP**

CODE	SIZE	PRICE
8623	15mm	\$7.43
8624	20mm	\$9.00
8625	25mm	\$17.63



**PRESS WATER TEE**

CODE	SIZE	PRICE
8617	15mm	\$7.23
8618	20mm	\$10.89
8619	25mm	\$20.21



**PRESS WATER TEE REDUCING**

CODE	SIZE	PRICE
8620	20 x 20 x 15	\$13.51
8621	25 x 25 x 15	\$19.12
8622	25 x 25 x 20	\$22.96
8683	20 x 15 x 15	\$17.84
8684	20 x 15 x 20	\$18.77



**PRESS WATER ELBOW LUGGED**

CODE	SIZE	PRICE
8626	15mm x 15FI	\$13.36
8627	20mm x 20FI	\$19.05



**BLOCKHEAD PRESS WATER ELBOW LUGGED (90MM)**

CODE	SIZE	PRICE
8699	15mm x 15MI	\$16.35



**PRESS WATER ELBOW FI**

CODE	SIZE	PRICE
8629	15mm x 15FI	\$14.77
8630	20mm x 20FI	\$17.88



**PRESS WATER ELBOW MI**

CODE	SIZE	PRICE
8631	15mm x 15MI	\$14.23
8632	20mm x 20MI	\$17.89



**PRESS WATER ELBOW UNION**

CODE	SIZE	PRICE
8687	15mm x 1/2"	\$9.03
8688	20mm x 3/4"	\$13.64



**PRESS WATER ADAPTOR**

CODE	SIZE	PRICE
8633	15mm x 15MI	\$6.95
8680	15mm x 20MI	\$10.60
8634	20mm x 20MI	\$11.47
8635	25mm x 25MI	\$20.52



**PRESS WATER ADAPTOR**

CODE	SIZE	PRICE
8636	15mm x 15FI	\$6.59
8637	20mm x 20FI	\$8.41
8638	25mm x 25FI	\$14.99



**PRESS UNION**

CODE	SIZE	PRICE
8685	15mm Loose Nut x 15mm Press (Flat Seat)	\$11.61
8679	20mm Loose Nut x 20mm Press (Flat Seat)	\$11.75

- Flame-free
- Permanent V-Profile press join
- All fittings comply with Australian Standards AS3688



# Pex Clips

NYLON ANCHOR MASONRY NAIL

## DUALPEX NYLON ANCHOR MASONRY NAIL

For 16-20mm  
Pex Pipe

\$35<sup>59</sup>  
INC. GST

Code: 7896

BAG  
100

*With Nylon Anchor*



## DUALPEX SADDLE FOR PEX WITH NYLON ANCHOR MASONRY NAIL

25mm

\$21<sup>42</sup>  
INC. GST

Code: 7897

BAG  
50



NEW

ALL IN  
ONE CLIP  
& PLUG

BAG  
QTY 100



### Pex Saddles MASONRY NAIL

25mm Code: 9056 \$38.40



### Pex Saddles SD SCREW

25mm Code: 4523 \$41.13



*With Tab*

### DUALPEX MASONRY NAIL

16mm to 20mm  
Code: 5551 \$34.47



### DUALPEX MASONRY NAIL

16mm to 20mm  
Code: 5559 \$30.76



### DUALPEX TWISTED NAIL

16mm to 20mm  
Code: 7895 \$34.50



### DUALPEX TIMBER SCREW

16mm to 20mm  
Code: 5568 \$34.26

PRICES INC. GST

# SPECIFICALLY DESIGNED FOR CUTTING PVC



**30% MORE  
EFFICIENT THAN  
STANDARD BLADES**

**CUTS STRAIGHT  
EVERYTIME**

**BATTERIES  
LAST LONGER**

**CUT IS FREE  
OF BURRS**



## **SAMURAI RECIPROCATING SAW BLADE PVC**

• 210mm • 16TPI • Made in Japan

**\$19<sup>51</sup>**  
INC. GST  
Code: 9632

## **COPPER ROUNDING TOOL**

**NEW**

**3/4"** \$55.64  
INC. GST

Code: 9898

Suitable for 3/4" copper tube

**1/2"** \$52.88  
INC. GST

Code: 9988

Suitable for 1/2" copper tube



**ROUNDS  
OUT  
COPPER IN  
SECONDS!**



- Saves time
- Nuts slide on easily
- Great frustration saver
- Lightweight and compact

**plumtool™**

*Innovative tools for* **PLUMBERS**

# SPECIAL

## POLY COMPRESSION FITTINGS

POLY METRIC  
COUPLING

**\$7.70**  
INC. GST  
25mm Code: 7145



POLY METRIC  
ELBOW

**\$8.80**  
INC. GST  
25mm - 25mm Code: 7158



POLY METRIC TEE

**\$10.45**  
INC. GST  
25mm Code: 7156



POLY METRIC  
ADAPTOR MALE

**\$5.50**  
INC. GST  
25mm - 1" Code: 7149



POLY METRIC  
CONNECTOR PE-CU

**\$9.90**  
INC. GST  
25mm - 3/4" Code: 7140



POLY METRIC  
ADAPTOR FEMALE

**\$5.50**  
INC. GST  
25mm - 1" Code: 7153



Valid until April 30th 2021



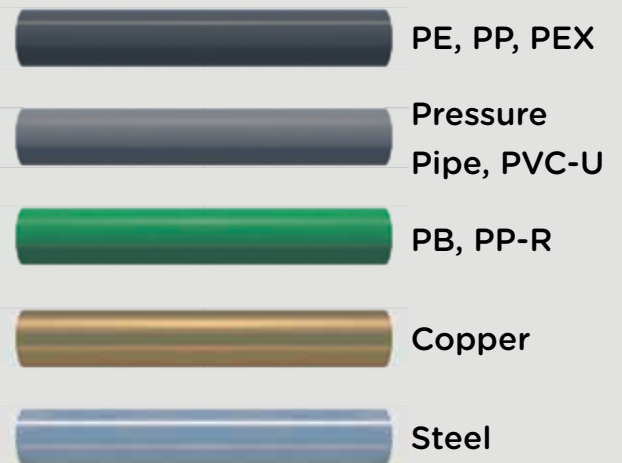
**FIX ANY LEAK YOU FIND IN ANY PIPE**



**WITH THE  
POLY UNIVERSAL SLIP REPAIR COUPLING**

**FITS AUSPEX, COUTA,  
SHARKBITE, REHAU AND  
MANY MORE**

- Each fitting designed to fit a wide range of diameters
- Can slide freely back and forth
- Suitable for all cold water applications



**A MUST FOR EVERY MAINTENANCE PLUMBER**



**AVAILABLE IN**

24mm - 28mm **Code: 7174**  
31mm - 35mm **Code: 7175**



**1** Mark insertion depth



**2** Insert the pipe



**3** Tighten the nut

# RURAL



**POLY RURAL  
COUPLING**

CODE	SIZE	PRICE
7101	20mm	\$11.71
7102	25mm	\$15.37



**POLY RURAL  
ADAPTOR MALE**

CODE	SIZE	PRICE
7103	20mm - 3/4"	\$7.94
7104	25mm - 1"	\$10.17



**POLY RURAL  
ADAPTER FEMALE**

CODE	SIZE	PRICE
7105	25mm - 1"	\$11.31



**POLY RURAL  
TEE**

CODE	SIZE	PRICE
7106	25 - 25 - 25	\$25.93

# METRIC



**POLY METRIC  
TEE PE-CU**

CODE	SIZE	PRICE
7135	25mm - 1/2"	\$27.99
7136	25mm - 3/4"	\$30.56



**POLY METRIC  
ELBOW PE-CU**

CODE	SIZE	PRICE
7137	25mm - 1/2"	\$24.10
7138	25mm - 3/4"	\$24.33



**POLY METRIC  
CONNECTOR PE-CU**

CODE	SIZE	PRICE
7139	20mm - 3/4"	\$15.08
7140	25mm - 3/4"	\$9.90 <small>SPECIAL</small>



**POLY METRIC  
TEE FEMALE**

CODE	SIZE	PRICE
7141	25 - 1/2" - 25	\$16.56
7142	25 - 3/4" - 25	\$16.97
7143	25 - 1" - 25	\$17.36



**POLY METRIC  
ELBOW**

CODE	SIZE	PRICE
7158	25mm - 25mm	\$8.80 <small>SPECIAL</small>
7159	32mm - 32mm	\$22.28



**POLY METRIC  
REDUCER**

CODE	SIZE	PRICE
7160	25mm - 20mm	\$11.99
7161	32mm - 25mm	\$16.85



**POLY METRIC  
END PLUG**

CODE	SIZE	PRICE
7162	25mm	\$8.22



**POLY METRIC  
ELBOW FEMALE**

CODE	SIZE	PRICE
7163	25mm - 3/4"	\$12.40
7164	25mm - 1"	\$11.31
7165	32mm - 1"	\$17.43
7166	32mm - 1 1/4"	\$17.71



# POLY COMPRESSION FITTINGS



**POLY RURAL  
ELBOW**

CODE	SIZE	PRICE
7107	25mm - 25mm	\$18.39



**POLY RURAL  
TEE FEMALE CENTRE**

CODE	SIZE	PRICE
7108	25 - 1" - 25	\$20.74



**POLY RURAL  
FEMALE ELBOW**

CODE	SIZE	PRICE
7109	20mm - 3/4"	\$11.37
7110	25mm - 3/4"	\$14.96
7111	25mm - 1"	\$15.37

- Captive O'Ring
- Largest Fitting Range
- Same Design for over 40 years
- AS4129



**POLY METRIC  
COUPLING**

CODE	SIZE	PRICE
7144	20mm	\$11.20
7145	25mm	\$7.70 <small>SPECIAL</small>
7146	32mm	\$16.79



**POLY METRIC  
ADAPTOR MALE**

CODE	SIZE	PRICE
7147	20mm - 3/4"	\$6.69
7148	25mm - 3/4"	\$7.08
7149	25mm - 1"	\$5.50 <small>SPECIAL</small>
7150	32mm - 1"	\$10.85
7151	32mm - 1 1/4"	\$11.99



**POLY METRIC  
ADAPTOR FEMALE**

CODE	SIZE	PRICE
7152	25mm - 3/4"	\$9.25
7153	25mm - 1"	\$5.50 <small>SPECIAL</small>
7154	32mm - 1"	\$11.71
7155	32mm - 1 1/4"	\$15.88



**POLY METRIC  
TEE**

CODE	SIZE	PRICE
7156	25 - 25 - 25	\$10.45 <small>SPECIAL</small>
7157	32 - 32 - 32	\$33.01



**POLY METRIC WALL PLATE  
LUGGED ELBOW FEMALE**

CODE	SIZE	PRICE
7167	25mm - 3/4"	\$20.40



**POLY METRIC  
ELBOW MALE**

CODE	SIZE	PRICE
7168	25mm - 3/4"	\$11.65
7169	25mm - 1"	\$14.00
7170	32mm - 1"	\$19.99
7171	32mm - 1 1/4"	\$20.33



**POLY METRIC  
SLIP REPAIR COUPLING**

CODE	SIZE	PRICE
7172	25mm	\$14.00
7173	32mm	\$19.60



**POLY UNIVERSAL  
SLIP REPAIR COUPLING**

CODE	SIZE	PRICE
7174	24mm - 28mm	\$74.54
7175	31mm - 35mm	\$92.99

# SUPER HEAVY DUTY GATIC LIFTER

Strength and durability

*Built to last a lifetime*



**plumtool**

## HEAVY DUTY LONG HANDLE GATIC LIFTER

- The Plumtool Lifter comes with two high tensile lifting bolts to help crack the seal on the lids.
- The bottom plate is made from 20mm steel and will not bend.

**\$360<sup>21</sup>**  
INC. GST  
Code: 4501

## Ever had trouble lifting a Gatic lid?

Lifting a Gatic cover that has been in place for years can be a real problem. Armed with the right tools and some "know how" the job can be made easier.



First remove any built up dirt from the key hole. Some lids have plastic plugs, simply pull them out.



Drive the new Plumtool Gatic Wedge between outer frame and the cover. This will crack the rust seal. For best results use 4 wedges and leave the wedges in place until the cover is lifted.



Spray the newly formed crack liberally with a lube spray. This will penetrate the rust and aid with the lifting process.



With the seal cracked, you can fit the gatic lifter into place. It's as simple as fitting the key into the lid.



Lower the yoke over the handle of the lifter and then tighten the lock nut down.



Put a wedge under the bolt to make allowance for any uneven surface around the lid. This also stops the bolts from screwing into the concrete and increases the lifting pressure on the lid.



Now tighten the bolts with a shifter.



When you apply some pressure to the gatic lifter handle, you'll see the lid break free. **Job done.**



**GATIC WEDGE**  
**\$63<sup>47</sup>**  
INC. GST  
Code: 7385



**HEAVY DUTY D HANDLE GATIC LIFTER**  
**\$111<sup>85</sup>**  
INC. GST  
Code: 9870



**D HANDLE GATIC LIFTER ONLY**  
**\$70<sup>58</sup>**  
INC. GST  
Code: 9859

# COMBO DEAL

## SOLVENT MATE & GLUTOTE

BOTH FOR  
**ONLY**  
**\$82.50**

Valid until April 30th 2021

**6X**  
FASTER THAN  
ROLLERS &  
BRUSHES



## SOLVENT MATES

A better alternative for  
applying Priming Fluids  
and Solvent Cements

- Hinged design opens wide for fast application
- The perfect height turn up every time
- 125mm head



CODE: 5609

Individual price \$66.68  
INC. GST



## GLUTOTE

Knocking over your glue  
pot can be very expensive

- Also stores Solvent Mate Applicator pair
- Great for hooking onto ladders!
- Solvent Mate Applicators not included

- Spike can be  
pushed into ground  
to prevent spillage  
on uneven surfaces



CODE: 1695

Individual price \$52.89  
INC. GST

**plumtool**™

*Innovative tools for* **PLUMBERS**

# EXTENDO

GAS CONNECTOR

**F + F NOW AVAILABLE**

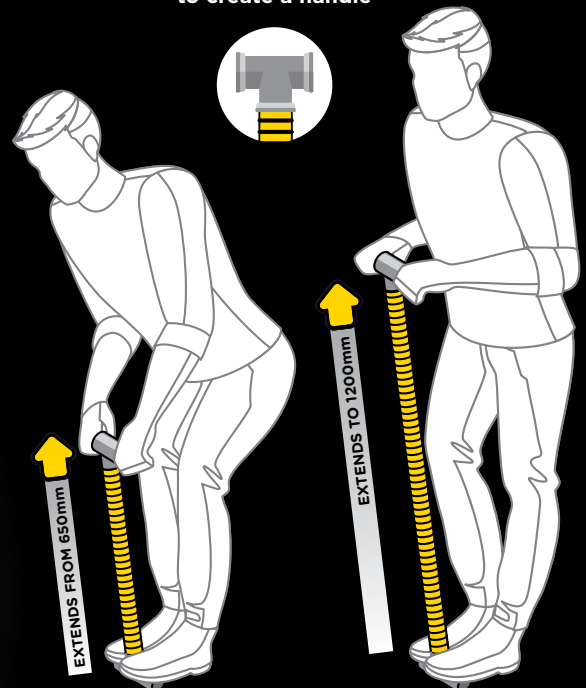


**BROMIC**  
PLUMBING & GAS

Extendable  
from **650mm**  
to **1200mm**

- ✓ Saves Space, **ONE Connector does it all!**
- ✓ 12mm internal bore for better gas flow
- ✓ Flame resistant stainless steel
- ✓ AGA Approved 8633G
- ✓ 1/2" M+F
- ✓ 1/2" F+F

**HANDY TIP:**  
Attach a brass tee to either end  
to create a handle



BOX  
10

**\$246.78** INC. GST

M+F Code: 6176  
F+F Code: 6178



# LEVEL GRADIENT ADJUSTABLE

ADJUSTABLE  
600mm

- Great drainers' tool
- Set dial to gradient required
- As used by plumbing inspectors
- Can also be used as a standard level
- Adjustable 600mm

Code: 2493



ONLY  
**\$205<sup>62</sup>**  
INC GST

**plumtool**<sup>TM</sup>

*Innovative tools for* **PLUMBERS**

# Jacko's Review

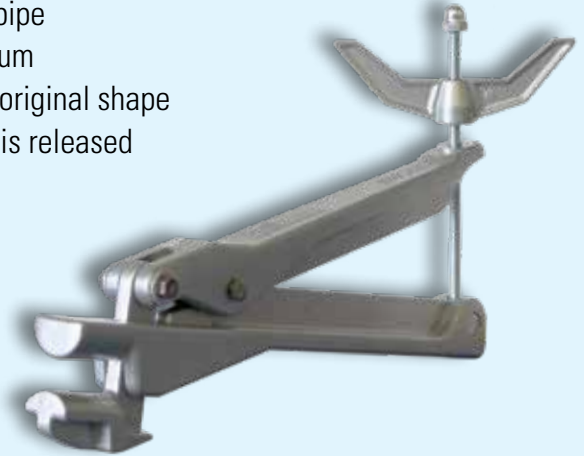


plumtool™

## PEX SHUT OFF TOOL

Shuts 16mm & 20mm PEX with ease

- No damage to pipe
- Quality aluminium
- Pipe returns to original shape when pressure is released



**SPECIAL**

**ONLY \$176.00**

INC. GST

Code: 9355

SAVE \$63<sup>36</sup>

### What a handy tool!

I bought a PEX shut off tool because we occasionally damage water pipes while excavating. This tool shuts off water and gas pipes without having to locate the isolating valve. I have now used it successfully several times and it has got me out of trouble.

I would recommend plumbers and drainers keep one of these in the truck.

Gary Thorn  
Plumber, Bayswater Victoria

G



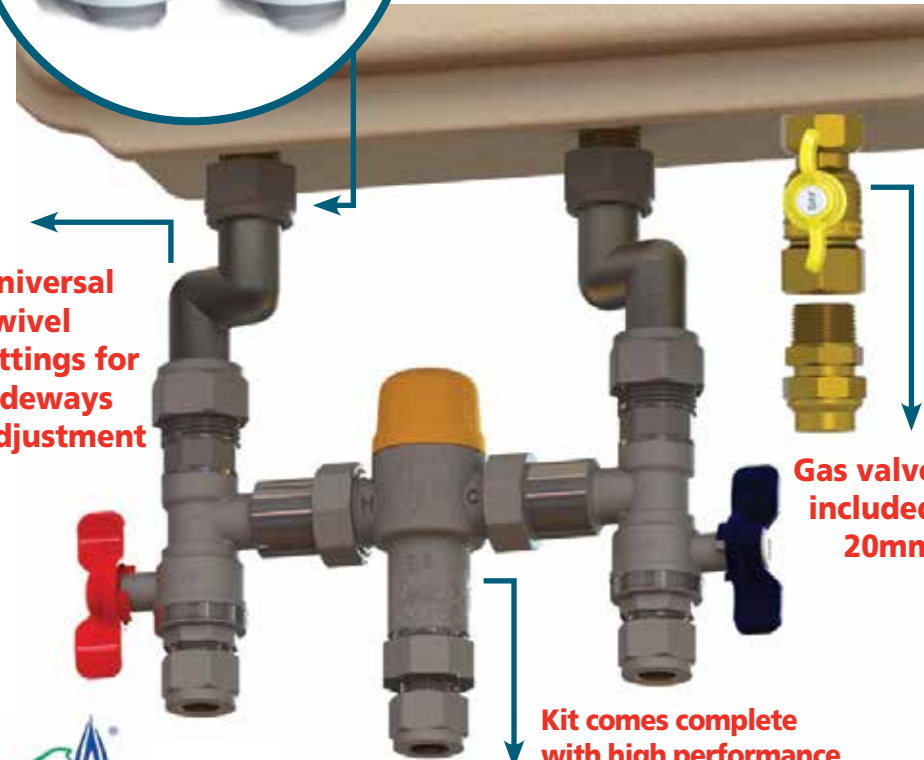
Valid until April 30th 2021

# Quickie Kit



Connections to unit allow for height adjustment

Universal swivel fittings for sideways adjustment



Gas valve included 20mm

Kit comes complete with high performance tempering valve



24 Month warranty



Insulation & cable ties provided to comply with AS3500

**Fit-off a hot water service in minutes!**  
Suits all instantaneous hot water services.

15mm outlet & tempering valve Code: 8300 | 20mm outlet & tempering valve Code: 8301

**Andrew from AMT Plumbing in Bayswater said:**

I recently tried the Quickie Kit on an install. I reckon it saved me at least 30-45 minutes. The insulation and cable ties included in the kit made for a nice neat finish. Everything I needed was there.

## Loose Nut Ball Valve Kit with Union

- Gas 20mm loose nut x 20mm female
- Water 20mm loose nut x 20mm female
- Outlet fitting 20Fi x 20C

Code: 8306



**Instantaneous Continuous Flow Kit**



# SHOWER MIXER FIXER



**CHROME  
PLATED**



- Replace shower mixers with ease
- Fits all mixers
- Chrome plated brass

Pack Qty 1

**OVAL**

Code 2987 \$90.51

**RECTANGLE**

Code 2983 \$92.94





# BULK SPECIAL

## TEFLON BOXES



**PINK**

• 100 rolls  
Code: 9011  
**\$110.00 inc GST**



**YELLOW**

• 100 rolls  
Code: 9010  
**\$137.50 inc GST**



**WHITE**

**RED BACK**  
• 200 rolls  
Code: 9012  
**\$137.50 inc GST**



**GREY**

**RED BACK**  
• 100 rolls  
Code: 1546  
**\$165.00 inc GST**



Valid until April 30th 2021

# STEEL STUDWORK?

plumbers choice

HAS THE ANSWERS!

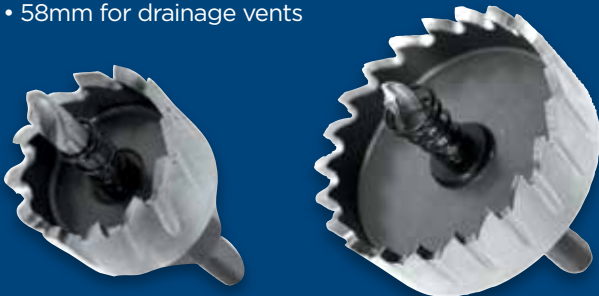


34MM  
AND  
58MM



## STEEL STUD DRILL

- Also great in roofing work for overflows, etc
- 34mm to suit yellow grommets
- 58mm for drainage vents



34mm

58mm

\$70<sup>56</sup>

INC. GST

Code: 2000

\$152<sup>08</sup>

INC. GST

Code: 2001



## STUD CLIPS

- WITH SD SCREW

- Works in any size hole

BAG  
100

16MM  
AND  
20MM



16mm

20mm

\$29<sup>09</sup>

INC. GST

Code: 5571

\$30<sup>88</sup>

INC. GST

Code: 5572



**\$599<sup>37</sup>**  
INC. GST  
Code: 1914

**STUD PUNCH**

- For the plumber in a hurry!
- Designed for cutting holes in steel stud work
- Cuts holes super fast



BAG  
100

**\$3885**  
INC. GST  
Code: 9241



**MULTI-FIT GROMMET**

Works in varying thicknesses of studwork (thickness 0.42mm to 2mm)  
Complies to Australian Standards AS3500.1 12 Clause 5.5 2.2 Part C



**ONE CLIP FITS 16MM - 20MM PEX PIPE**



BAG  
100



**\$3319**  
INC. GST  
Code: 5558

**DUALPEX CLIP SD SCREW**

BAG  
100



**\$3559**  
INC. GST  
Code: 5575

**DUALPEX CLIP SD SCREW WITH TAB**

BAG  
100



16mm  
Code: 4526 **\$33.16**  
20mm  
Code: 4527 **\$36.70**

**PEX SADDLES SD SCREW WITH TAB**

**PRELOADED**

WITH HEX SD SCREWS  
Code: 1471



330mm - 600mm

**UNLOADED**

Code: 1450



330mm - 600mm

**MINI PRELOADED**

WITH BUGLE SCREWS  
Code: 1474



190mm - 330mm

**FASTANOG**

- Faster than timber noggins
- Compulsory in termite areas
- Set back measurer



preloaded  
set back  
measurer

**SLIDE TO ADJUST LENGTH**



# PLUG & WASTE

**AVAILABLE NOW**



## PLUG & WASTE QUATTRO POP UP

**4 in 1**

- Suitable for use on basins with or without overflow
- Suitable for 32 & 40mm outlets

32/40mm \$22.21 INC GST Code: 9005



## PLUG & WASTE PLASTIC WITH S/S TRIM

40mm \$5.85 INC GST Code: 9024



**WITH OVERFLOW**

**CHROME**

## PLUG & WASTE CHROME WITH OVERFLOW

32mm \$21.36 INC GST Code: 9022  
40mm \$21.36 INC GST Code: 9020



**CHROME**

## PLUG & WASTE CHROME

32mm \$21.36 INC GST Code: 9023  
40mm \$21.36 INC GST Code: 9021

# Plumbers' Bedding Compound

*For a professional finish*

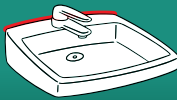
**MADE IN GERMANY**

- Easier clean up than silicone
- Remains flexible
- Temperature range: -10°C to +100°C
- Made in Germany

**\$22.28**  
INC. GST  
Code: 1846



## Applications: Plug Sink Toilet



1. Roll out and place around plug and washer



2. Tighten plug and washer into place



3. Remove excess compound



4. Job completed

**RED BACK**

# TRADIES' SUNBLOCK

**WILL NOT  
DAMAGE  
COLORBOND  
ROOF SHEETS**



## PROTECTING OUR TRADE

- Will not damage coloured roof materials
- Tough protection SPF 30+
- Fragrance Free
- 4 Hours water resistant

Code: 8205

**CLIP IT, HANG IT,  
HOOK IT**

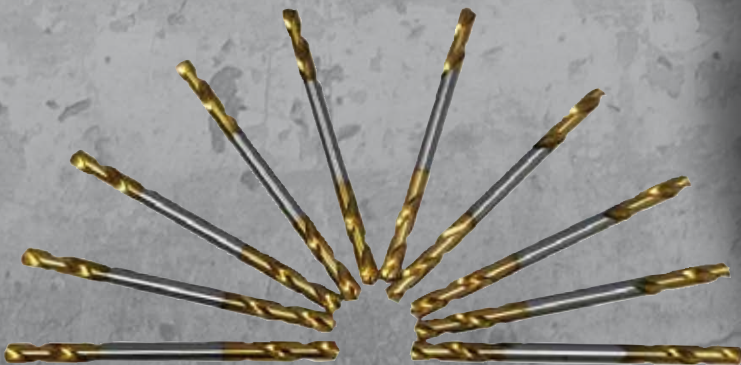
**AQUARIUS**  
DISTRIBUTION



**DRILLS  
FASTER  
LASTS  
LONGER**

**10  
PACK**

Code: 9687



## DOUBLE ENDED DRILL BITS

Drill won't ever slip or run off again

- Number 30 Double Ended Panel Drill Bits
- Comes with FREE Click Adaptor
- To Suit 1/8" rivets
- Drills faster
- Lasts longer

**FREE BONUS**



**CLICK ADAPTOR**

**plumtool™**

*Innovative tools for* **PLUMBERS**

# YOU SPOKE, WE LISTENED!

To continue to make things easier for you to support Trade Only, we've made a few additions to [www.plumberschoice.com.au](http://www.plumberschoice.com.au)



ORDER TEMPLATES

## Save Order Templates

You can now save custom Order Templates.

With just one click, add all the items from your Order Template to your shopping cart. Perfect for fit off packs, hottie kits or end of month stock top ups.



FAVOURITES

## Favourite Items

Access to your favourite and most used items on the one page.

No more scrolling through to add the same items you buy every order. Now add them all from the convenience of one page.



QUOTES

## Request a Quote

Want some gear quoted?

Haven't had some items priced up by your Sales Rep yet? Well, from the cart page you can now order or request a quote of the gear in your shopping cart.

## Don't have an online account yet?

Head to [www.plumberschoice.com.au/register/](http://www.plumberschoice.com.au/register/) and sign up today. Order any time from the convenience of your phone or laptop.



TIP OF  
THE  
MONTH

We'll tip  
**YOU**  
when you tip  
**US!**



Every featured story receives a  
**\$200 Store Credit**

Tip for both installing and removing mixer taps with the black plastic knurled fixing nuts when the access is limited.

1. Grab a piece of 50mm PVC pipe that is longer than the depth of the sink.
2. Heat the PVC pipe with a heat gun for about 30mm from the end so it becomes soft.
3. Mould the softened end around the knurled nut until the PVC is cool.
4. You now have a mixer tap tube spanner!

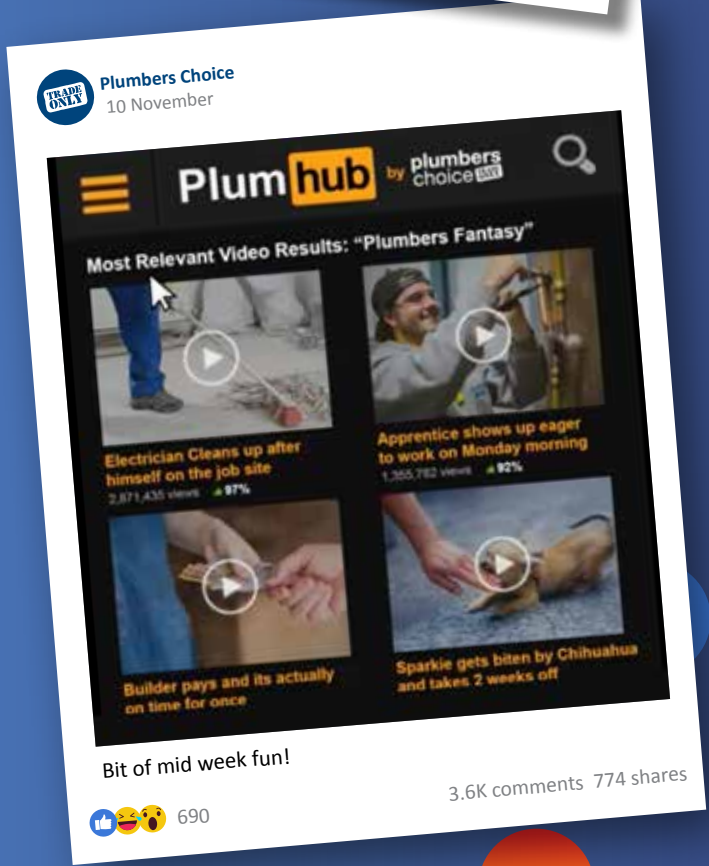


Thanks to John from John Simpson Plumbing, \$200 store credit is coming your way.

To get involved send us an email [info@plumberschoice.com.au](mailto:info@plumberschoice.com.au)

**59K**  
FOLLOWERS

# Join the **TRADE ONLY** Conversation on **facebook**



# ADHESIVE COVER PLATES

**STRONG  
ABS  
PLASTIC**



73mm

**16mm  
PEX Adhesive  
Round**

Pack Qty 10  
Code: 4908



73mm

**1/2" BSP  
Adhesive  
Round**

Pack Qty 10  
Code: 4909



100mm

**40mm PVC  
Pipe Adhesive  
Round**

Pack Qty 10  
Code: 1198



100mm

**50mm PVC  
Pipe Adhesive  
Round**

Pack Qty 10  
Code: 1197



128mm

**1/2" BSP  
Adhesive  
Oval**

Pack Qty 10  
Code: 1181

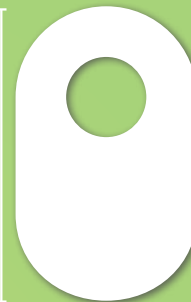
**NEW**



200mm

**40mm  
PVC Pipe  
Adhesive  
Oval**

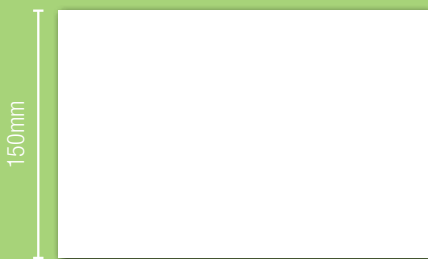
Pack Qty 10  
Code: 1196



200mm

**50mm  
PVC Pipe  
Adhesive  
Oval**

Pack Qty 10  
Code: 1195



150mm

240mm

**Adhesive Patch**

Pack Qty 1  
Code: 1199



**Adhesive back  
for quick & easy installation**

- White to match inside of cupboard
- Great for covering drilling errors



# STAINLESS STEEL

67mm



**Flat  
1/2" BSP**

Pack Qty 50  
Code 9154

67mm



**10mm Rise  
1/2" BSP**

Pack Qty 50  
Code 9153

72mm



**16mm Rise  
1/2" BSP**

Pack Qty 10  
Code 1652

72mm



**22mm Rise  
1/2" BSP**

Pack Qty 10  
Code 1653

65mm



**34mm Rise  
1/2" BSP**

Pack Qty 1  
Code 1649

**NEW**

67mm



**10mm Rise  
3/4" BSP**

Pack Qty 10  
Code 1276

67mm



**Flat  
1/2" Copper**

Pack Qty 50  
Code 9539

67mm



**10mm Rise  
1/2" Copper**

Pack Qty 50  
Code 1238

70mm



**Flat  
3/4" Copper**

Pack Qty 1  
Code 9045

70mm



**10mm Rise  
3/4" Copper**

Pack Qty 1  
Code 1226

70mm



**Flat  
1" Copper**

Pack Qty 1  
Code 9046

97mm



**Flat  
1-1/4" Copper**

Pack Qty 1  
Code 9047

97mm



**Flat  
1-1/2" Copper**

Pack Qty 1  
Code 9048

97mm



**Flat  
2" Copper**

Pack Qty 1  
Code 9049

70mm



**Flat Square  
1/2" BSP**

Pack Qty 10 Code 4011

**STAINLESS  
STEEL**

70mm



**10mm Rise Square  
1/2" BSP  
Chrome Plated**

Pack Qty 2 Code 4010

**CHROME  
PLATED  
ABS PLASTIC**



## HIGH PERFORMANCE FLEXIBLE MS SEALANT AND ADHESIVE

**GREY** Code: 8225 • **WHITE** Code: 9845 • **BLACK** Code: 8226



- UV resistant, absorbs acoustic and mechanical vibrations
- Highly flexible with up to 400% elongation
- Sticks and seals all common building materials, even in the wet
- Contains zero solvents and non-bubbling
- +/-25% cyclic expansion and low VOC
- Interior and exterior use

## ROOF & GUTTER SILICONE



### TRANSLUCENT 300g

- Bostik Quality
- Ideal for sealing sheet metal, roofing & guttering
- Potable water approved AS4020-1999
- Neutral Cure
- Non-Corrosive

Code: 9926

**BOX  
20**

### GREY 300g

- Bostik Quality
- Ideal for sealing sheet metal, roofing & guttering
- Potable water approved AS4020-1999
- Neutral Cure
- Non-Corrosive

Code: 9953

**BOX  
20**

### BLACK 300g

- Bostik Quality
- Ideal for sealing sheet metal, roofing & guttering
- Potable water approved AS4020-1999
- Neutral Cure
- Non-Corrosive

Code: 9812

**BOX  
20**



# APPROVED DRAIN LAGGING

- Approved drain lagging where pipes pass through concrete
- Australian Draining Standards 3500 Part 2.2 Clause 3.8.2b states - "Drains laid through footings shall be installed with an annular space of not less than 25mm filled with a liner of flexible material"

40mm x 600mm	\$8.42	<b>Code: 9900</b>
50mm x 600mm	\$8.42	<b>Code: 9901</b>
65mm x 600mm	\$8.42	<b>Code: 8922</b>
100mm x 600mm	\$8.60	<b>Code: 9244</b>
150mm x 600mm	\$10.11	<b>Code: 1902</b>

[ All prices are per half ] \*All prices include GST



**DOES  
YOUR  
JOB  
COMPLY?**

*Fast  
and Simple  
Solution!*



**1.** Take 2 pieces of Styrolag and place around pipe



**2.** Fit two halves together, secure first end with duct tape



**3.** Secure other end with duct tape. Job completed.



# DOES YOUR JOB COMPLY?

**10 metres x 100mm x 5mm**

- Compression resistant
- Closed Cell Polyethylene
- Prevents water penetration under the slab
- Complies with the following Australian Standard...

**AS2870-2011 5.6.4 (a)**

"Closed-cell polyethylene lagging shall be used around all stormwater and sanitary plumbing drain pipe penetrations through footings. The lagging shall be a minimum of 20mm thick on Class H1/H1-D sites and 40mm on Class H2/H2-D and Class E/E-D sites."



**TOUGH  
AND  
DURABLE**

**\$16<sup>47</sup>**  
INC. GST  
Code: 9720



# INTRODUCING THE **NEW** FLUIDMASTER PRO CISTERN

**Most Powerful Flush System**  
Adjustable up to 9/4.5L PRO Cistern  
with Link and Seat

**INSTALL WITH CONFIDENCE**

Code: 2089

Includes  
Low Level  
Flush Pipe



4.5/3L Dual Flush Technology  
Simple Flush Volume Conversion  
to 6/3L or 9/4.5L  
UV Resistant - Certified  
Plastic Cistern with Bottom Inlet  
Saves Water

**EQUIPPED WITH FLUIDMASTER TECHNOLOGY**



Fluidmaster Pro  
Series Cistern  
Inlet Valve



Fluidmaster  
Universal Dual  
Flush Outlet Valve



[www.Fluidmaster.com.au](http://www.Fluidmaster.com.au)

