

plumbers choice **TRADE ONLY**

A

FOLD PAGE OVER LEFT

B

FOLD BACK SO THAT 'A' MEETS 'B'

**'TRYING TO IMPROVE
OUR INDUSTRY OVER THE NEXT DECADE
ONLY' REQUIRES PLUMBERS TO
SUPPORT ONE THING PASSIONATELY**



A

B

489 Mountain Highway, Bayswater, VIC 3153
Email: info@plumberschoice.com.au • Ph: (03) 9720 8274

www.plumberschoice.com.au





Luke's Editorial

"Who remembers **MAD** Magazine?"

Check our front page for a Mad Magazine style fold in.

Mad Magazine was known to be innovative and rebellious. When every magazine in the world was doing fold outs Mad Magazine came up with a fold in.

At Plumbers Choice we like to think we are also innovative and rebellious, when every merchant was freely selling plumbing products to anyone who wanted them, Plumbers Choice introduced a Trade Only policy.

Our Trade Only policy bucked the trend of DIY plumbing. Today there are a number of Trade Only suppliers. Sales in the Trade Only sector continue to grow rapidly.

Our Goal is to change the way plumbing supplies are sold in Australia to a Trade Only industry.

If you care about your trade and your business make it your New Year's resolution to give us a go, you won't be disappointed.

LUKE BOLTON - DIRECTOR, PLUMBERS CHOICE



HOW TO ORDER



Online - 24 hours

www.plumberschoice.com.au



Email - 24 hours

sales@plumberschoice.com.au



Phone - Business Hours

(03) 9720 8274

Our knowledgeable staff will take your order.



At our Trade Outlets

Monday - Friday

489 Mountain Highway, Bayswater, VIC 3153

4/200 Woodpark Road, Smithfield, NSW 2164



Personal Sales Rep

Your personal Sales Representative is able to tailor our service to suit your needs.



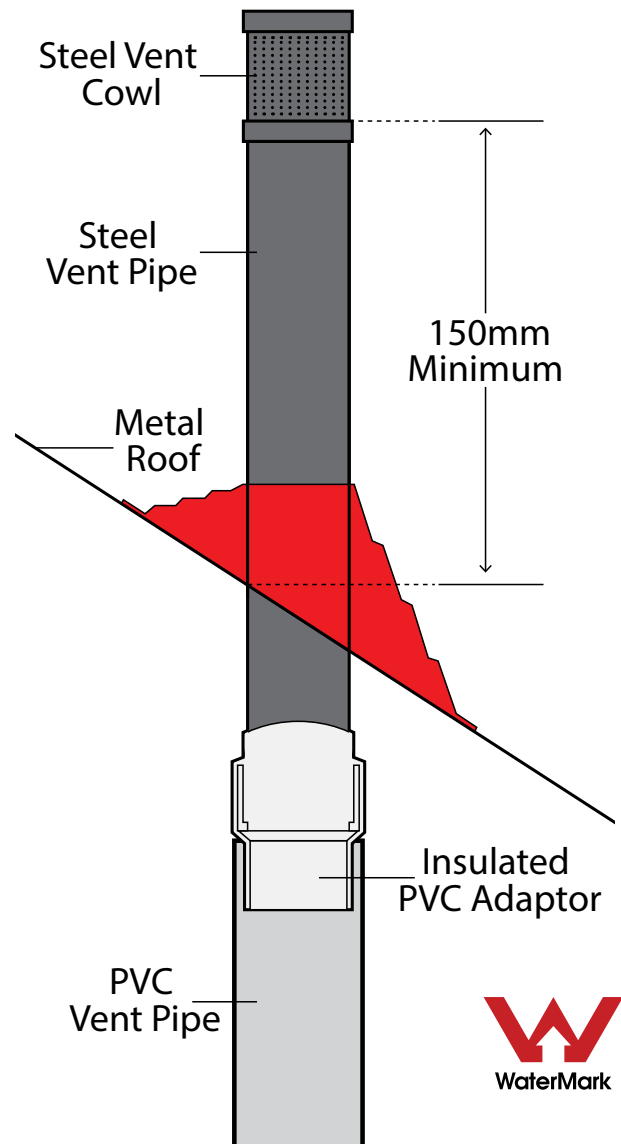
NEW!

BAL RATED DRAINAGE VENT & FLASHING KIT

Kit includes:

- Steel vent and cowl
- BAL rated flashing to suit steel roof
- Steel to PVC insulated adaptor

PATENTED



BAL12.5
Black Flashing Kit

Code: **8876**



BAL29
Red Silicone Kit

Code: **8877**





BROMIC
PLUMBING & GAS

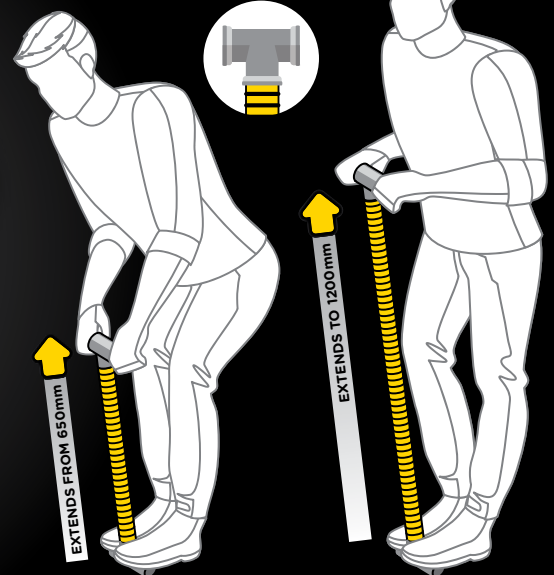
Extendable from 650mm to 1200mm

- ✓ Saves Space, **ONE Connector** does it all!
- ✓ 12mm internal bore for better gas flow
- ✓ Flame resistant stainless steel
- ✓ AGA Approved 8633G
- ✓ 1/2" M+F & 1/2" F+F



SPECIAL
\$198.00 INC GST
BOX 10
 M+F Code: 6176 F+F Code: 6178

HANDY TIP:
Attach a brass tee to either end to create a handle



Become an **AGA Listed Gas Fitter**



- AGA Logo Licence**
- AGA Membership**
- Monthly Digest**
- AGA Directory Listing**
- Promoted to Consumers**



The Australian Gas Association

Go to aga.asn.au/gas-fitters
and join AGA now!

E: office@aga.asn.au

Tel: (03) 9580 4500

SPECIFICALLY DESIGNED FOR CUTTING PVC



**30% MORE
EFFICIENT THAN
STANDARD BLADES**

**CUTS STRAIGHT
EVERYTIME**

**BATTERIES
LAST LONGER**

**CUT IS FREE
OF BURRS**



SAMURAI RECIPROCATING SAW BLADE PVC

• 210mm • 16TPI • Made in Japan

\$18.79
INC. GST

Code: 9632

COPPER ROUNDING TOOL

NEW

3/4" \$53.58
INC. GST

Code: 9898

Suitable for 3/4" copper tube

1/2" \$50.92
INC. GST

Code: 9988

Suitable for 1/2" copper tube

- Saves time
- Avoids frustration
- Nuts slide on easily
- Lightweight and compact

**ROUNDS
OUT
COPPER IN
SECONDS!**



plumtool™

Innovative tools for **PLUMBERS**

BULK SPECIAL

EZY FIT CONNECTORS PEX LINED BURST PROOF



\$88.00
INC. GST

**BURST
PROOF
10 YEAR
WARRANTY**

EZY FIT WATER CONNECTOR

- Burst Proof Inner Core
- 1/2" Female x 1/2" Female Connection
- Premium 8mm Straight Water Hose

225mm QTY 25 Code: 5100
300mm QTY 25 Code: 5101
450mm QTY 25 Code: 5102



225mm
\$99.00
INC. GST

150mm
\$88.00
INC. GST

EZY FIT WATER CONNECTOR M & F EXTENSIONS

- Burst Proof Inner Core
- 1/2" Male x 1/2" Female Connection
- Ideal for extending mixer tails that are too short

150mm QTY 20 Code: 5009 \$88.00
225mm QTY 20 Code: 9155 \$99.00



10 Pairs

Valid until February 28th 2021





DISHWASHER COVER PLATES

"For the professional plumber"



NEW

- Leave a neat finish in the cupboard
- Keeps pests out
- Fits over the solenoid valve



Code: 1792



BEFORE



AFTER

ADHESIVE COVER PLATES

**STRONG
ABS
PLASTIC**



73mm

**16mm
PEX Adhesive
Round**

Pack Qty 10
Code: 4908



73mm

**1/2" BSP
Adhesive
Round**

Pack Qty 10
Code: 4909



100mm

**40mm PVC
Pipe Adhesive
Round**

Pack Qty 10
Code: 1198



100mm

**50mm PVC
Pipe Adhesive
Round**

Pack Qty 10
Code: 1197



128mm

**1/2" BSP
Adhesive
Oval**

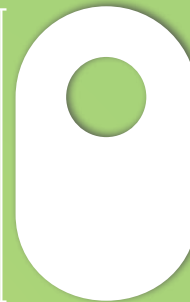
Pack Qty 10
Code: 1181



200mm

**40mm
PVC Pipe
Adhesive
Oval**

Pack Qty 10
Code: 1196

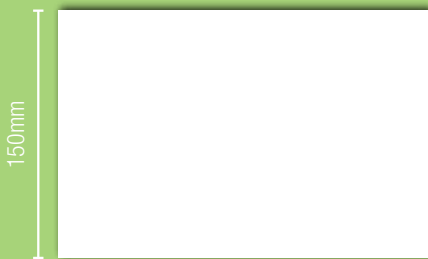


200mm

**50mm
PVC Pipe
Adhesive
Oval**

Pack Qty 10
Code: 1195

NEW



150mm

240mm

Adhesive Patch

Pack Qty 1
Code: 1199



**Adhesive back
for quick & easy installation**

- White to match inside of cupboard
- Great for covering drilling errors

STAINLESS STEEL

67mm



**Flat
1/2" BSP**

Pack Qty 50
Code 9154

67mm



**10mm Rise
1/2" BSP**

Pack Qty 50
Code 9153

72mm



**16mm Rise
1/2" BSP**

Pack Qty 10
Code 1652

72mm



**22mm Rise
1/2" BSP**

Pack Qty 10
Code 1653

65mm



**34mm Rise
1/2" BSP**

Pack Qty 1
Code 1649

NEW

67mm



**10mm Rise
3/4" BSP**

Pack Qty 10
Code 1276

67mm



**Flat
1/2" Copper**

Pack Qty 50
Code 9539

67mm



**10mm Rise
1/2" Copper**

Pack Qty 50
Code 1238

70mm



**Flat
3/4" Copper**

Pack Qty 1
Code 9045

70mm



**10mm Rise
3/4" Copper**

Pack Qty 1
Code 1226

70mm



**Flat
1" Copper**

Pack Qty 1
Code 9046

97mm



**Flat
1-1/4" Copper**

Pack Qty 1
Code 9047

97mm



**Flat
1-1/2" Copper**

Pack Qty 1
Code 9048

97mm



**Flat
2" Copper**

Pack Qty 1
Code 9049

70mm



**Flat Square
1/2" BSP**

Pack Qty 10 Code 4011

**STAINLESS
STEEL**

70mm



**10mm Rise Square
1/2" BSP
Chrome Plated**


Pack Qty 2 Code 4010

**CHROME
PLATED
ABS PLASTIC**

- For a professional finish inside the cupboard.
- Flexy Flange cupboard plate fits tight to pipe which makes it ant-proof.

1 Flexy Flange Fits 4 Sizes!

80mm



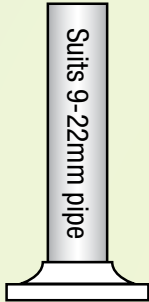
Suits 9-22mm pipe

Small


Pack Qty 10

\$21.80 INC. GST

Code: 8250




90mm



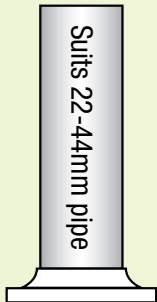
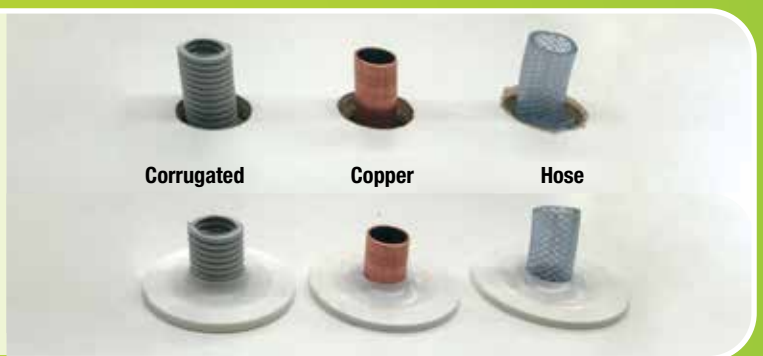
Suits 22-44mm pipe

Medium


Pack Qty 5

\$14.48 INC. GST

Code: 8252

105mm



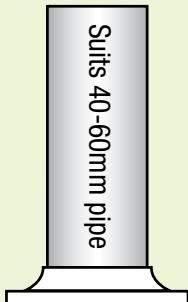
Suits 40-60mm pipe

Large

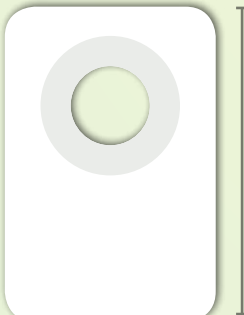
Pack Qty 5

\$16.13 INC. GST

Code: 9968




115mm



170mm

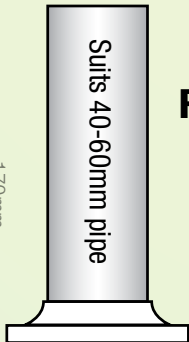
Suits 40-60mm pipe

Rectangle

Pack Qty 5

\$21.44 INC. GST

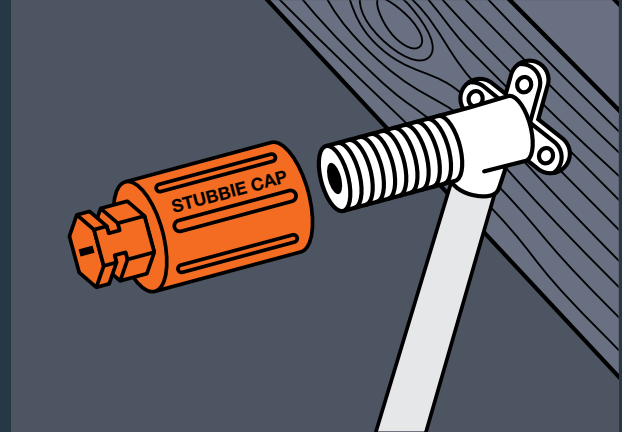
Code: 2202




STUBBIE

TEST CAP

Sometimes shorter is better!



- Easier to install cabinets
- Can be removed with screwdriver or shifter
- Safer high visibility
- Available in a bag of 100

\$1.22 each
INC. GST
Code: 4803

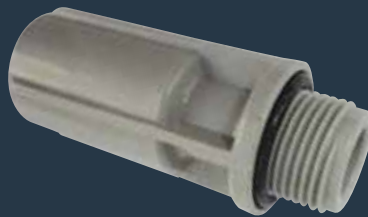


BRASS STUBBIE TEST CAP

- Shorter, makes it easier to install cabinets.
- Never leaks or fails
- Use over & over again

NOW ONLY

\$1.98 each
INC. GST
Code: 4804



TEST PLUG DUO GREY

- Duo plug and cap combination
- For testing hot and cold water installations
- One product does both plug and test cap

\$2.41 each
INC. GST
Code: 5052



TEST CAP DRAINABLE

- Small removable plug for easy drainage of water line
- Eliminates spilling inside wall cavity

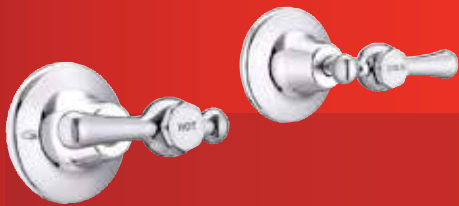
\$2.51 each
INC. GST
Code: 5053

TAPWARE

CHROME PLATED FINISH



1/4 TURN CERAMIC LEVER HANDLE



**WALL TOP ASSEMBLY
LEVER HANDLE
EZ CLEAN ANTI-VANDAL**

Code: 3714 \$97.32 (INC. GST)



**BASIN TOP ASSEMBLY
LEVER HANDLE
EZ CLEAN ANTI-VANDAL**

Code: 3720 \$97.32 (INC. GST)



**BASIN SET
LEVER HANDLE
EZ CLEAN ANTI-VANDAL**

Code: 3737 \$152.76 (INC. GST)



WALL TOP ASSEMBLIES

Code: 3704 \$36.16 (INC. GST)



BASIN TOP ASSEMBLIES

Code: 3707 \$36.16 (INC. GST)



BASIN SET

Code: 3700 \$81.77 (INC. GST)



**BATH SPOUT
W/AERATOR C/P 136mm**

Code: 7097 \$24.92 (INC. GST)



**PILLAR TOP ASSEMBLY
EZ CLEAN ANTI-VANDAL**

Code: 3730 \$45.26 (INC. GST)



SHOWER SET

Code: 3702 \$56.46 (INC. GST)

PLUG & WASTE

AVAILABLE NOW



PLUG & WASTE QUATTRO POP UP **4 in 1**

- Suitable for use on basins with or without overflow
- Suitable for 32 & 40mm outlets

32/40mm \$21.39 INC GST Code: 9005



PLUG & WASTE PLASTIC WITH S/S TRIM

40mm \$5.63 INC GST Code: 9024



WITH OVERFLOW

CHROME

PLUG & WASTE CHROME WITH OVERFLOW

32mm \$20.57 INC GST Code: 9022
40mm \$20.57 INC GST Code: 9020



CHROME

PLUG & WASTE CHROME

32mm \$20.57 INC GST Code: 9023
40mm \$20.57 INC GST Code: 9021

Plumbers' Bedding Compound

For a professional finish

MADE IN GERMANY

- Easier clean up than silicone
- Remains flexible
- Temperature range: -10°C to +100°C
- Made in Germany

\$21.45
INC. GST
Code: 1846



Applications:



Plug Sink Toilet



1. Roll out and place around plug and washer



2. Tighten plug and washer into place



3. Remove excess compound



4. Job completed

RURAL



**POLY RURAL
COUPLING**

CODE	SIZE	PRICE
7101	20mm	\$11.28
7102	25mm	\$14.80



**POLY RURAL
ADAPTOR MALE**

CODE	SIZE	PRICE
7103	20mm - 3/4"	\$7.65
7104	25mm - 1"	\$9.79



**POLY RURAL
ADAPTER FEMALE**

CODE	SIZE	PRICE
7105	25mm - 1"	\$10.89



**POLY RURAL
TEE**

CODE	SIZE	PRICE
7106	25 - 25 - 25	\$24.97

METRIC



**POLY METRIC
TEE PE-CU**

CODE	SIZE	PRICE
7135	25mm - 1/2"	\$26.95
7136	25mm - 3/4"	\$29.43



**POLY METRIC
ELBOW PE-CU**

CODE	SIZE	PRICE
7137	25mm - 1/2"	\$23.21
7138	25mm - 3/4"	\$23.43



**POLY METRIC
CONNECTOR PE-CU**

CODE	SIZE	PRICE
7139	20mm - 3/4"	\$14.52
7140	25mm - 3/4"	\$14.85



**POLY METRIC
TEE FEMALE**

CODE	SIZE	PRICE
7141	25 - 1/2" - 25	\$15.95
7142	25 - 3/4" - 25	\$16.34
7143	25 - 1" - 25	\$16.72



**POLY METRIC
ELBOW**

CODE	SIZE	PRICE
7158	25mm - 25mm	\$12.65
7159	32mm - 32mm	\$21.45



**POLY METRIC
REDUCER**

CODE	SIZE	PRICE
7160	25mm - 20mm	\$11.55
7161	32mm - 25mm	\$16.23



**POLY METRIC
END PLUG**

CODE	SIZE	PRICE
7162	25mm	\$7.92



**POLY METRIC
ELBOW FEMALE**

CODE	SIZE	PRICE
7163	25mm - 3/4"	\$11.94
7164	25mm - 1"	\$10.89
7165	32mm - 1"	\$16.78
7166	32mm - 1 1/4"	\$17.05

POLY COMPRESSION FITTINGS



**POLY RURAL
ELBOW**

CODE	SIZE	PRICE
7107	25mm - 25mm	\$17.71



**POLY RURAL
TEE FEMALE CENTRE**

CODE	SIZE	PRICE
7108	25 - 1" - 25	\$19.97



**POLY RURAL
FEMALE ELBOW**

CODE	SIZE	PRICE
7109	20mm - 3/4"	\$10.95
7110	25mm - 3/4"	\$14.41
7111	25mm - 1"	\$14.80

- Captive O'Ring
- Largest Fitting Range
- Same Design for over 40 years
- AS4129



**POLY METRIC
COUPLING**

CODE	SIZE	PRICE
7144	20mm	\$10.78
7145	25mm	\$10.95
7146	32mm	\$16.17



**POLY METRIC
ADAPTOR MALE**

CODE	SIZE	PRICE
7147	20mm - 3/4"	\$6.44
7148	25mm - 3/4"	\$6.82
7149	25mm - 1"	\$7.65
7150	32mm - 1"	\$10.45
7151	32mm - 1 1/4"	\$11.55



**POLY METRIC
ADAPTOR FEMALE**

CODE	SIZE	PRICE
7152	25mm - 3/4"	\$8.91
7153	25mm - 1"	\$9.74
7154	32mm - 1"	\$11.28
7155	32mm - 1 1/4"	\$15.29



**POLY METRIC
TEE**

CODE	SIZE	PRICE
7156	25 - 25 - 25	\$15.95
7157	32 - 32 - 32	\$31.79



**POLY METRIC WALL PLATE
LUGGED ELBOW FEMALE**

CODE	SIZE	PRICE
7167	25mm - 3/4"	\$19.64



**POLY METRIC
ELBOW MALE**

CODE	SIZE	PRICE
7168	25mm - 3/4"	\$11.22
7169	25mm - 1"	\$13.48
7170	32mm - 1"	\$19.25
7171	32mm - 1 1/4"	\$19.58



**POLY METRIC
SLIP REPAIR COUPLING**

CODE	SIZE	PRICE
7172	25mm	\$13.48
7173	32mm	\$18.87



**POLY UNIVERSAL
SLIP REPAIR COUPLING**

CODE	SIZE	PRICE
7174	24mm - 28mm	\$71.78
7175	31mm - 35mm	\$89.54



PRESS GAS FITTINGS



PRESS GAS COUPLING

CODE	SIZE	PRICE
8639	15mm	\$6.03
8640	20mm	\$7.74
8641	25mm	\$13.24



PRESS GAS SLIP REPAIR COUPLING

CODE	SIZE	PRICE
8642	15mm	\$5.78
8643	20mm	\$7.26
8644	25mm	\$11.26



PRESS GAS ELBOW F/F 90°

CODE	SIZE	PRICE
8645	15mm x 90	\$7.16
8646	20mm x 90	\$9.36
8647	25mm x 90	\$17.20



PRESS GAS ELBOW F/F 45°

CODE	SIZE	PRICE
8648	20mm x 45	\$11.17
8649	25mm x 45	\$14.89



PRESS GAS REDUCING COUPLING F/F

CODE	SIZE	PRICE
8650	20mm x 15mm	\$10.70
8651	25mm x 20mm	\$13.19



PRESS GAS REDUCER M/F

CODE	SIZE	PRICE
8652	20mm x 15mm	\$9.35
8653	25mm x 20mm	\$12.63



PRESS GAS TEE

CODE	SIZE	PRICE
8654	15mm	\$8.27
8655	20mm	\$14.26
8656	25mm	\$22.29



PRESS GAS TEE REDUCING

CODE	SIZE	PRICE
8657	20 x 20 x 15	\$14.72
8658	25 x 25 x 15	\$22.65
8659	25 x 25 x 20	\$25.04



PRESS GAS END CAP

CODE	SIZE	PRICE
8660	15mm	\$7.80
8661	20mm	\$8.79
8662	25mm	\$15.48



PRESS GAS ELBOW LUGGED

CODE	SIZE	PRICE
8663	15mm x 15FI	\$17.72
8664	20mm x 20FI	\$19.37



BLOCKHEAD PRESS GAS ELBOW LUGGED (90MM)

CODE	SIZE	PRICE
8698	15mm x 15MI	\$18.33



PRESS GAS ADAPTOR MI

CODE	SIZE	PRICE
8666	15mm x 15MI	\$5.31
8667	20mm x 20MI	\$13.09
8668	25mm x 25MI	\$20.60



PRESS GAS ADAPTOR FI

CODE	SIZE	PRICE
8669	15mm x 15FI	\$7.16
8670	20mm x 20FI	\$10.90
8671	25mm x 25FI	\$14.86

25 YEAR WARRANTY*

Brasshards is proud to offer a 25 year warranty against defects and manufacturing faults in CuPress fittings (when installed in accordance with national, state and local plumbing codes by a licensed plumber). Issues arising from incorrect installation, misuse or environmental elements are not covered by this warranty. Please contact Brasshards for a copy of our full warranty document.

PRESS WATER FITTINGS



PRESS WATER COUPLING

CODE	SIZE	PRICE
8601	15mm	\$3.98
8602	20mm	\$5.90
8603	25mm	\$8.38



PRESS WATER SLIP REPAIR COUPLING

CODE	SIZE	PRICE
8604	15mm	\$4.51
8605	20mm	\$6.92
8606	25mm	\$10.13



PRESS WATER ELBOW F/F 90°

CODE	SIZE	PRICE
8607	15mm x 90	\$4.51
8608	20mm x 90	\$6.92
8609	25mm x 90	\$12.75



PRESS WATER ELBOW F/F 45°

CODE	SIZE	PRICE
8610	15mm x 45	\$5.64
8611	20mm x 45	\$7.78
8612	25mm x 45	\$14.32



PRESS WATER ELBOW M/F 90°

CODE	SIZE	PRICE
8681	15mm	\$5.21
8682	20mm	\$6.85



PRESS WATER REDUCING COUPLING F/F

CODE	SIZE	PRICE
8613	20mm x 15mm	\$9.03
8614	25mm x 20mm	\$15.40



PRESS WATER REDUCER M/F

CODE	SIZE	PRICE
8615	20mm x 15mm	\$8.10
8616	25mm x 20mm	\$11.50



PRESS WATER END CAP

CODE	SIZE	PRICE
8623	15mm	\$7.15
8624	20mm	\$8.67
8625	25mm	\$16.98



PRESS WATER TEE

CODE	SIZE	PRICE
8617	15mm	\$6.96
8618	20mm	\$10.49
8619	25mm	\$19.46



PRESS WATER TEE REDUCING

CODE	SIZE	PRICE
8620	20 x 20 x 15	\$13.01
8621	25 x 25 x 15	\$18.41
8622	25 x 25 x 20	\$22.11
8683	20 x 15 x 15	\$17.18 NEW
8684	20 x 15 x 20	\$18.07 NEW



PRESS WATER ELBOW LUGGED

CODE	SIZE	PRICE
8626	15mm x 15FI	\$12.86
8627	20mm x 20FI	\$18.34



BLOCKHEAD PRESS WATER ELBOW LUGGED (90MM)

CODE	SIZE	PRICE
8699	15mm x 15MI	\$15.74



PRESS WATER ELBOW FI

CODE	SIZE	PRICE
8629	15mm x 15FI	\$14.22
8630	20mm x 20FI	\$17.22



PRESS WATER ELBOW MI

CODE	SIZE	PRICE
8631	15mm x 15MI	\$13.70
8632	20mm x 20MI	\$17.23



PRESS WATER ELBOW UNION

CODE	SIZE	PRICE
8687	15mm x 1/2"	\$8.70
8688	20mm x 3/4"	\$13.13



PRESS WATER ADAPTOR

CODE	SIZE	PRICE
8633	15mm x 15MI	\$6.69
8680	15mm x 20MI	\$10.21
8634	20mm x 20MI	\$11.04
8635	25mm x 25MI	\$19.76



PRESS WATER ADAPTOR

CODE	SIZE	PRICE
8636	15mm x 15FI	\$6.35
8637	20mm x 20FI	\$8.10
8638	25mm x 25FI	\$14.43



PRESS UNION

CODE	SIZE	PRICE
8685	15mm Loose Nut x 15mm Press (Flat Seat)	\$11.18 NEW
8679	20mm Loose Nut x 20mm Press (Flat Seat)	\$11.31

- Flame-free
- Permanent V-Profile press join
- All fittings comply with Australian Standards AS3688



MONACO™

Universal Cistern with Link and Seat

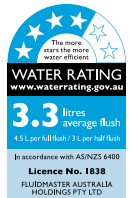
1000A-002

Bulk Pricing Available
Code: 2090



**Upgrade to the Brand
Trusted by Professionals
and Toilet Manufacturers
Worldwide**

- Extra Easy Install Features Built-in
- 4.5/3L Dual Flush Technology
- Simple Flush Volume Conversion to 6/3L or 9/4.5L
- UV Resistant - Certified
- Plastic Cistern with Bottom Inlet
- Saves Water



10
YEAR WARRANTY

MONACO™

Toilet Seat Standard

7118E-013

Code: 2091



1
YEAR WARRANTY

- Sleek Design
- UV-Resistant Certified (Polypropylene)
- 130 - 170mm Adjustable Hinge Range
- Heavy Duty Plastic Bottom Fixing Hinges
- Universal Fit
- Gloss Finish

\$43.89
INC. GST

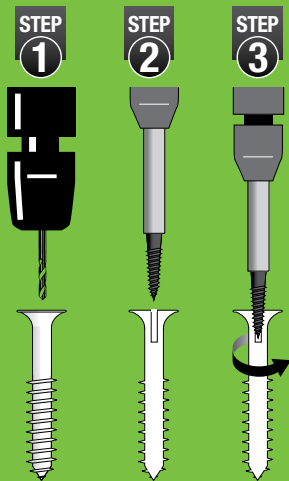
SCREWS

Fixings & Fastenings

PAN SCREW REMOVER KIT

Easily removes burred or corroded pan screws

Kit contains:
Drill bit, screw remover to suit brass pan screws, T-handle ratcheting wrench



\$93.70
INC. GST
Code: 2607

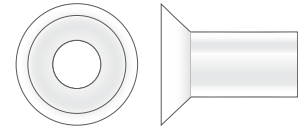


PAN SCREW CAP - PUSH IN

• Bag of 100

\$19.47
INC. GST

Code: 1406



BOX 100

PAN SAVERS NYLON

• Protect toilet pans from damage

\$20.24
INC. GST

Code: 1983

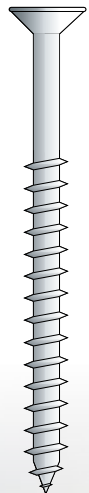
BOX 100

PAN SCREWS

• Stainless Steel
• Non-corrosive

CODE	LENGTH	GAUGE	PRICE
9622	25mm	12g	\$45.52
9186	50mm	12g	\$54.88
2505	65mm	12g	\$70.35
1400	75mm	12g	\$91.20

*All prices include GST



Stainless steel washer and screw. Will not rust

TOGGLE SPRING FOR CISTERNS

- 3/6 Inch x 75mm
- Stainless steel stem and washer - will not rust
- Use 12mm drill bit through plaster
- Zinc plated toggle designed to give maximum holding power in cavity walls

\$2.05 each
INC. GST
Code: 3157

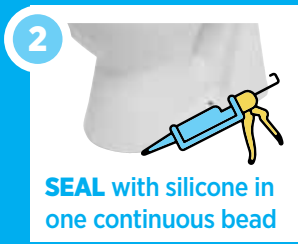


PAN WEDGE

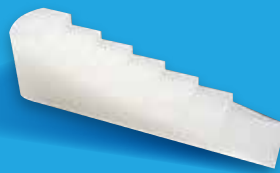
Get the perfect
silicone finish
to the pan



- Lifts and levels the pan before applying silicone
- The wedge is invisible once installed



LARGE



17mm Wide & steps up to 22mm High

\$3744
INC. GST
Code: 2022

10
QTY

MINI



6mm Wide & steps up to 5mm High

\$3744
INC. GST
Code: 2021

100
QTY

AQUARIUS
DISTRIBUTION

COMPLETE COVER PLATES CAMERA DRAIN CAPS

- Cap fits in a 35mm hole
- Can be used on flat or round downpipes
- Seals the hole when inserted
- Can be removed easily

\$3507
INC. GST
Code: 4807

QTY
50



AQUARIUS
DISTRIBUTION

UV STABILISED BLACK NYLON TAP-INS WILL NOT FAIL!



- Black Tap-Ins will not fail when exposed to the sun
- Decero coated nails will not rust (exceeds 1000 hour salt spray test)



BOX 500

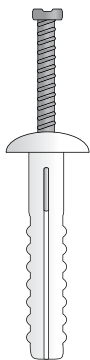


NYLON TAP-INS - UV BLACK

- For outdoor use
- Black Nylon UV stabilised will not perish

CODE	LENGTH	QTY	PRICE
9524	5mm x 25mm	500	\$77.70
1187	5mm x 40mm	500	\$110.17

BOX 100

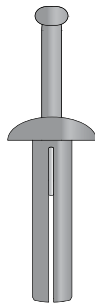


NYLON TAP-INS - MUSHROOM HEAD

- 100% nylon, not plastic

CODE	LENGTH	QTY	PRICE
9345	5mm x 25mm	100	\$14.53
9925	6.5mm x 50mm	100	\$20.13

BOX 100



METAL TAP-INS - MUSHROOM HEAD

- Strong cast alloy

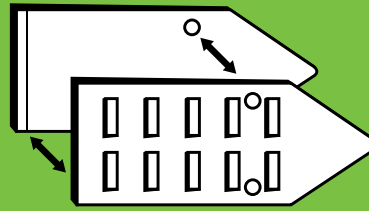
CODE	LENGTH	QTY	PRICE
9387	5mm x 25mm	100	\$33.20
1967	6.5mm x 25mm	100	\$42.18
1968	6.5mm x 32mm	100	\$44.99
1705	6.5mm x 40mm	100	\$47.68

NYLON TAP-INS - ROUND HEAD

- 100% nylon, not plastic

CODE	LENGTH	QTY	PRICE
9978	5mm x 25mm	100	\$14.24
9907	5mm x 25mm	500	\$62.82
9179	5mm x 40mm	100	\$20.35
9973	5mm x 40mm	500	\$87.16
9567	6.5mm x 25mm	100	\$14.77
2262	6.5mm x 40mm	100	\$21.25

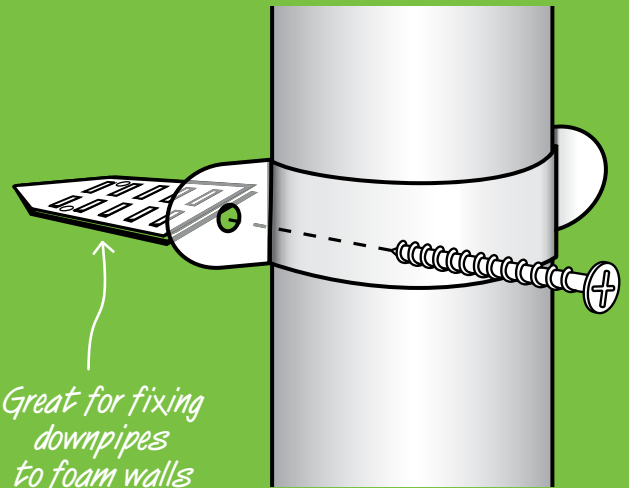
*All prices include GST



BAG QTY 50
\$56.25 INC. GST
 Code: 1222

STYROWEDGE

A wedge type fastening for polystyrene walls



Great for fixing downpipes to foam walls

NB. Ensure all penetrations are sealed.



Step 1 Using a sharp blade, cut a 30mm slot, 50mm deep into the wall.



Step 2 Take 2 Styrowedge halves and join the smooth sides together.



Step 3 Insert the Styrowedge into the slot in the wall.



Step 4 Ensure the Styrowedge is flush with the finish of the wall.



Step 5 Place the downpipe and clip in position on the wall. Insert an 8-12 gauge screw into the Styrowedge and tighten into place.



Step 6 Complete for remaining fastenings.



HIGH PERFORMANCE FLEXIBLE MS SEALANT AND ADHESIVE

GREY Code: 8225 • **WHITE** Code: 9845 • **BLACK** Code: 8226



- UV resistant, absorbs acoustic and mechanical vibrations
- Highly flexible with up to 400% elongation
- Sticks and seals all common building materials, even in the wet
- Contains zero solvents and non-bubbling
- +/-25% cyclic expansion and low VOC
- Interior and exterior use

 BOSTIKTRADE

 BOSTIKTRADE

 BOSTIKAUSTRALIA

bostik.com

ROOF & GUTTER SILICONE



TRANSLUCENT 300g



- Bostik Quality
- Ideal for sealing sheet metal, roofing & guttering
- Potable water approved AS4020-1999
- Neutral Cure
- Non Corrosive

Code: 9926

**BOX
20**

GREY 300g



- Bostik Quality
- Ideal for sealing sheet metal, roofing & guttering
- Potable water approved AS4020-1999
- Neutral Cure
- Non Corrosive

Code: 9953

**BOX
20**

BLACK 300g



- Bostik Quality
- Ideal for sealing sheet metal, roofing & guttering
- Potable water approved AS4020-1999
- Neutral Cure
- Non Corrosive

Code: 9812

**BOX
20**

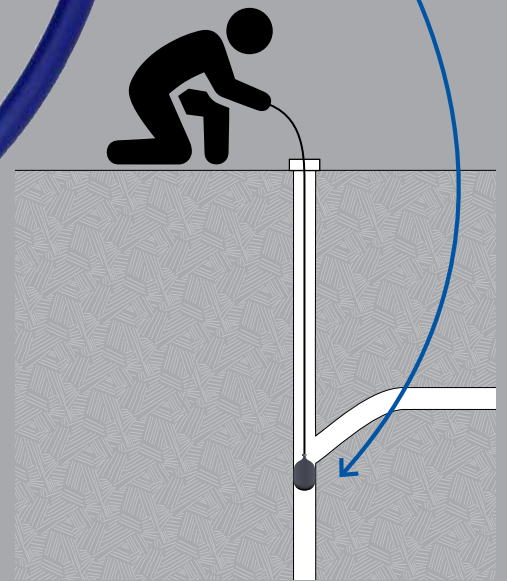
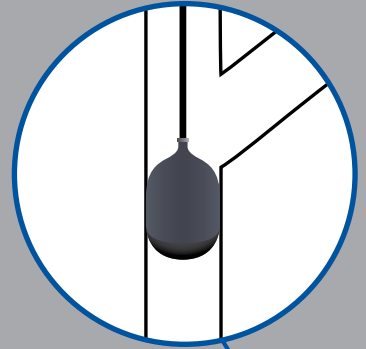
INFLATABLE TEST PLUG 100MM

- Equipped with 2.5m hose
- To suit 100mm PVC
- Inflate with car pump
- Can be used down an inspection shaft

Code: 2009

\$101.75

Equipped with 2.5m hose



TEST PLUG ALUMINIUM 100MM

- A breeze to install
- 2 convenient tie-off points
- Size 100mm

Code: 2149

\$50.89



TEST PLUG RIGHT ANGLED WITH HANDLES 100mm

- Keeps hands out of the drain
- A breeze to install
- Cannot be lost down drain
- The only plug to use when testing at a right angled junction
- Cast Aluminium
- Patented

Code: 2004

\$147.49



SPECIAL

PRESSURE REDUCTION VALVES

\$44
INC. GST

PRV RIGHT ANGLE AVG

- Preset 500kPa
- 20mm (3/4 inch) BSP female by copper olive compression
- Stainless Steel Seat

Code: 3602



\$44
INC. GST

PRV 20MM 250-605 KPA

- 250-605 kPa
- Preset 500kPa
- 20mm (3/4 inch) BSP F&F
- Stainless Steel Seat

Code: 3603



\$49⁵⁰
INC. GST

PRV BALL VALVE

- Combination 20mm PRV & isolation ball valve
- Quick and easy to install
- Stainless Steel Seat

Code: 3600



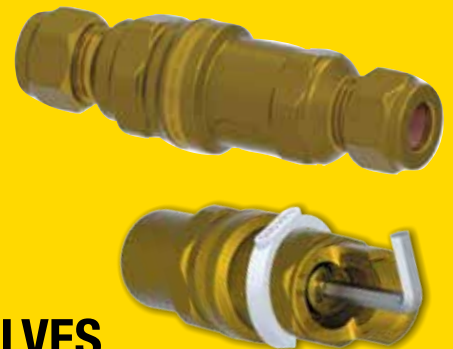
\$33
INC. GST

TRI-SET VALVES

- One valve with three pressure settings 350kPa, 500kPa & 600kPa

Compression 15mm Code: 3610

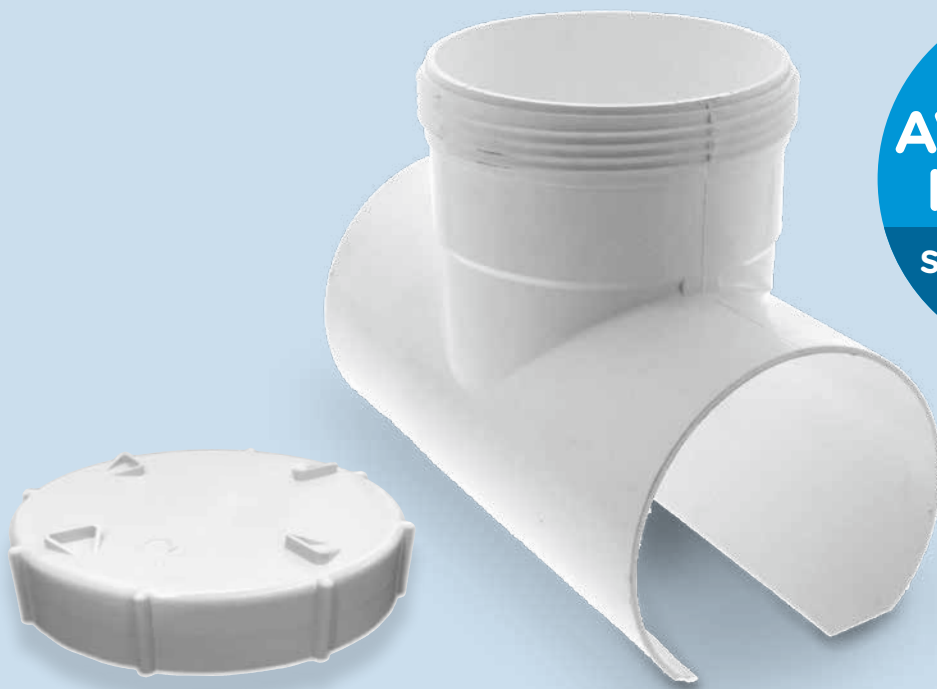
Female 15mm Code: 3611



Valid until February 28th 2021



Create your own access point



**NOW
AVAILABLE
IN 90mm**

Snap Tee with Cap
Code: 2636

SNAP TEE

100mm WITH CAP Code: 2635 | **90mm WITH CAP** Code: 2636

- Easy to fit with minimal digging
- No Fernco required
- Comes with screw cap
- A must for drain blockages



All PVC complies
with ASNZ1260



1. Apply Priming Fluid



2. Apply Glue



3. Drill Pipe



4. Access Pipe

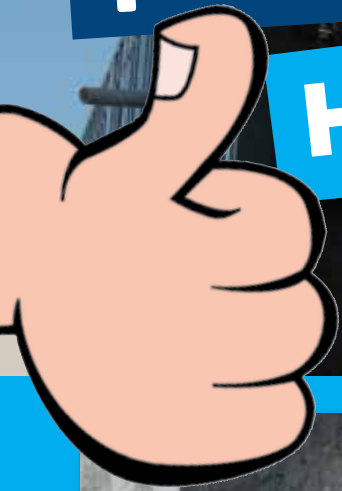


5. Screw on Cap... Job done!

STEEL STUDWORK?

plumbers choice

HAS THE ANSWERS!

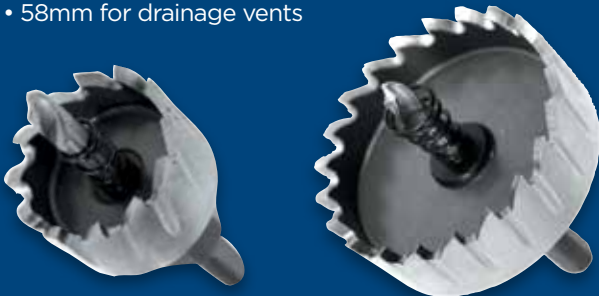


34MM
AND
58MM



STEEL STUD DRILL

- Also great in roofing work for overflows, etc
- 34mm to suit yellow grommets
- 58mm for drainage vents



34mm

58mm

\$6794
INC. GST
Code: 2000

\$14644
INC. GST
Code: 2001



STUD CLIPS - WITH SD SCREW

- Works in any size hole

BAG
100

16MM
AND
20MM



16mm

20mm

\$2801
INC. GST
Code: 5571

\$2974
INC. GST
Code: 5572



\$577¹⁵
INC. GST
Code: 1914

STUD PUNCH

- For the plumber in a hurry!
- Designed for cutting holes in steel stud work
- Cuts holes super fast



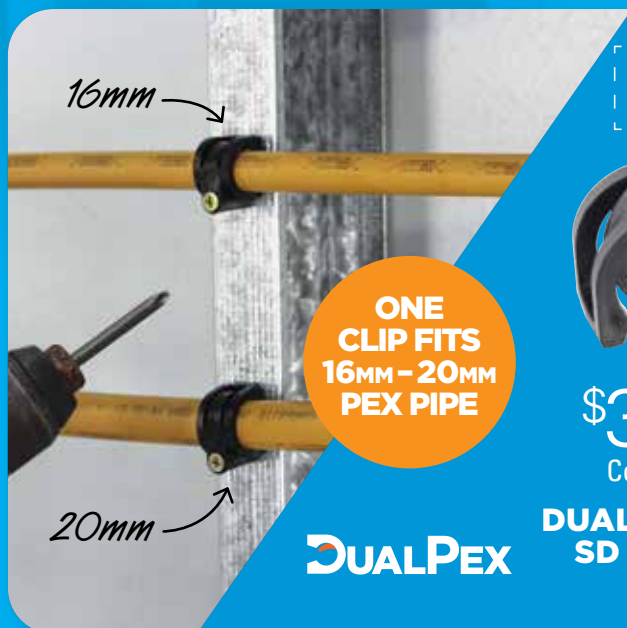
BAG
100

\$374¹
INC. GST
Code: 9241



MULTI-FIT GROMMET

Works in varying thicknesses of studwork (thickness 0.42mm to 2mm)
Complies to Australian Standards AS3500.1 12 Clause 5.5 2.2 Part C



ONE CLIP FITS 16MM - 20MM PEX PIPE



BAG
100



\$319⁶
INC. GST
Code: 5558

DUALPEX CLIP SD SCREW

BAG
100



\$342⁷
INC. GST
Code: 5575

DUALPEX CLIP SD SCREW WITH TAB

BAG
100



16mm
Code: 4526 **\$31.93**
20mm
Code: 4527 **\$35.34**

PEX SADDLES SD SCREW WITH TAB

PRELOADED

WITH HEX SD SCREWS
Code: 1471



330mm - 600mm

UNLOADED

Code: 1450



330mm - 600mm

MINI PRELOADED

WITH BUGLE SCREWS
Code: 1474



190mm - 330mm

FASTANOG

- Faster than timber noggins
- Compulsory in termite areas
- Set back measurer



preloaded
set back
measurer

SLIDE TO ADJUST LENGTH



Jacko's Review



Kinetic Water Ram Basic Kit

Only 10 available!

Jacko's mates say:

Great addition! Works a treat. Had mine for 6 years, still going strong.
Bob Johnson

Worth every cent!
Daniel Watson

- Unblock sinks, toilets & tubs
- Self contained pump and pressure gauge so you can hit the stoppage with just the right amount of force
- Lightweight tool

Code: 2011

ONLY
\$638.00
INC. GST

SAVE \$295.55



Valid until February 28th 2021

RED BACK

TRADIES' SUNBLOCK

**WILL NOT DAMAGE
COLORBOND
ROOF SHEETS**



PROTECTING OUR TRADE

- Will not damage coloured roof materials
- Tough protection SPF 30+
- Fragrance Free
- 4 Hours water resistant

Code: 8205

**CLIP IT, HANG IT,
HOOK IT**

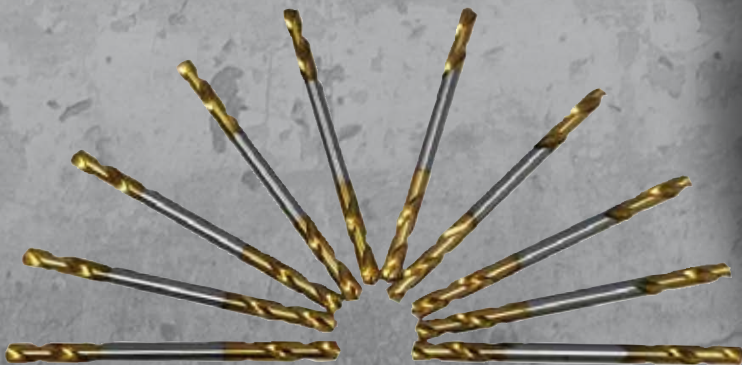
AQUARIUS
DISTRIBUTION



**DRILLS
FASTER
LASTS
LONGER**

**10
PACK**

Code: 9687



DOUBLE ENDED DRILL BITS

Drill won't ever slip or run off again

- Number 30 Double Ended Panel Drill Bits
- Comes with FREE Click Adaptor
- To Suit 1/8" rivets
- Drills faster
- Lasts longer

FREE BONUS



CLICK ADAPTOR

plumtool™

Innovative tools for **PLUMBERS**

Quickie Kit



Connections to unit allow for height adjustment

Universal swivel fittings for sideways adjustment

Gas valve included 20mm

Kit comes complete with high performance tempering valve



24 Month warranty



Insulation & cable ties provided to comply with AS3500

Fit-off a hot water service in minutes!
Suits all instantaneous hot water services.

15mm outlet & tempering valve Code: 8300 | 20mm outlet & tempering valve Code: 8301

Andrew from AMT Plumbing in Bayswater said:

I recently tried the Quickie Kit on an install. I reckon it saved me at least 30-45 minutes. The insulation and cable ties included in the kit made for a nice neat finish. Everything I needed was there.

Loose Nut Ball Valve Kit with Union

- Gas 20mm loose nut x 20mm female
- Water 20mm loose nut x 20mm female
- Outlet fitting 20Fi x 20C

Code: 8306



Instantaneous Continuous Flow Kit



Have you had this happen to you?



We have the Solution!



Hot water unit was here
\$\$



MARCO HOT WATER SECURITY TEMPLATE

- Rough in pipes to this template
- Foil the thieves
- Reusable on countless jobs

Pre-drilled template set up for:
Rinnai 26, Rheem 26 Metro, Thermann 26

New!



Protect your jobs in just 3 Simple steps!

\$71.50
INC. GST
Code: 8695



1. Install Template on the wall



2. Connect hot, cold & gas to the frame



3. Fit & commission the unit on hand-over day

METAL TAP INS

- Use where nylon is not suitable
- Not affected by sun

Tap Ins Metal
6.5mm x 40mm



BOX
100

\$47.67
INC. GST
Code: 1705

Tap Ins Metal
6.5mm x 32mm



BOX
100

\$44.99
INC. GST
Code: 1968

Tap Ins Metal
6.5mm x 25mm



BOX
100

\$42.19
INC. GST
Code: 1967

Tap Ins Metal
5mm x 22mm



BOX
100

\$33.19
INC. GST
Code: 9387

NEW

Same price as a traditional luggie!

BLOCK HEAD



BLOCKHEAD LUGGED ELBOW

- Reduce the number of noggins required
- Can press it while in place
- Fix it from any direction
- Lead free brass
- 25 year warranty



PATENTED

I hate cutting noggins, what's not to like?

Tim - Jonesy's Plumbing

Finally a luggie that can be pressed when screwed in place

Matt - MWP & E

Blockhead Press
Water Elbow Lugged
15mm x 15MI (90mm)
Code: 8699

Blockhead Press
Gas Elbow Lugged
15mm x 15MI (90mm)
Code: 8698



Traditional Fix

Plumbers Noggin



Stud Fix

Fix to side of studs



Existing Noggin

Fix to carpenters noggin



| PLUMBING SUPPLIES SPECIALIST |

Under licence no. 2001

BRASS COVER PLATES



**Rough Brass
1/2 Inch BSP
Code 4016**



**Rough Brass
3/4 Inch BSP
Code 4017**



BRASS HOSE BIBS



**HOSE BIB LEVER HANDLE
1/4 TURN FI**

CODE	SIZE	PRICE (INC GST)
3671	15mm	\$13.12
3672	20mm	\$16.13



**HOSE BIB LEVER HANDLE
1/4 TURN MI**

CODE	SIZE	PRICE (INC GST)
3664	15mm	\$11.73
3667	20mm	\$14.43



**HOSE BIB LEVER HANDLE
DOUBLE OUTLET MI**

CODE	SIZE	PRICE (INC GST)
3669	15mm	\$26.02
3670	20mm	\$29.86



HOSE BIB T/HEAD MI

CODE	SIZE	PRICE (INC GST)
3660	15mm	\$10.73
3661	20mm	\$11.84



HOSE BIB T/HEAD FI

CODE	SIZE	PRICE (INC GST)
3662	15mm	\$10.73
3659	20mm	\$14.22



**HOSE BIB T/HEAD
BACK PLATED MI**

CODE	SIZE	PRICE (INC GST)
3663	15mm	\$15.24



**HOSE BIB MI
WITH VACUUM BREAKER**

CODE	SIZE	PRICE (INC GST)
3668	15mm	\$21.36



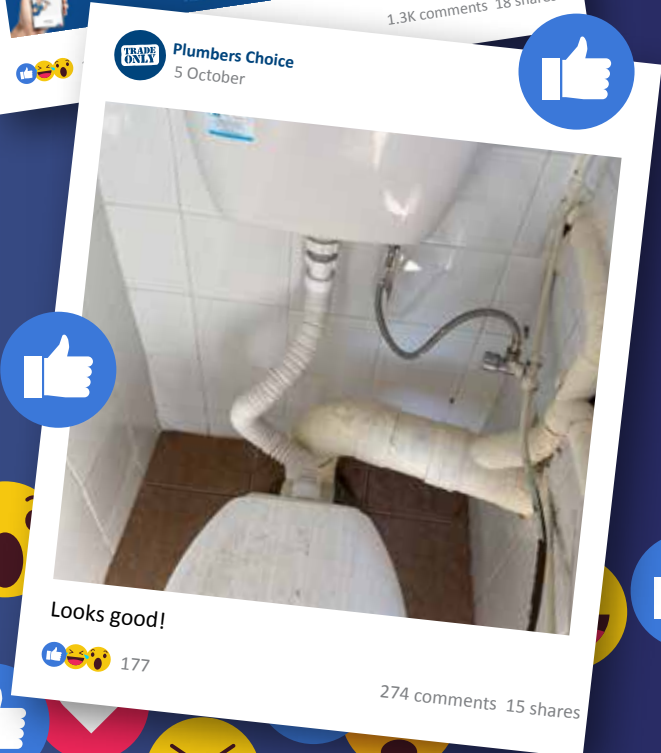
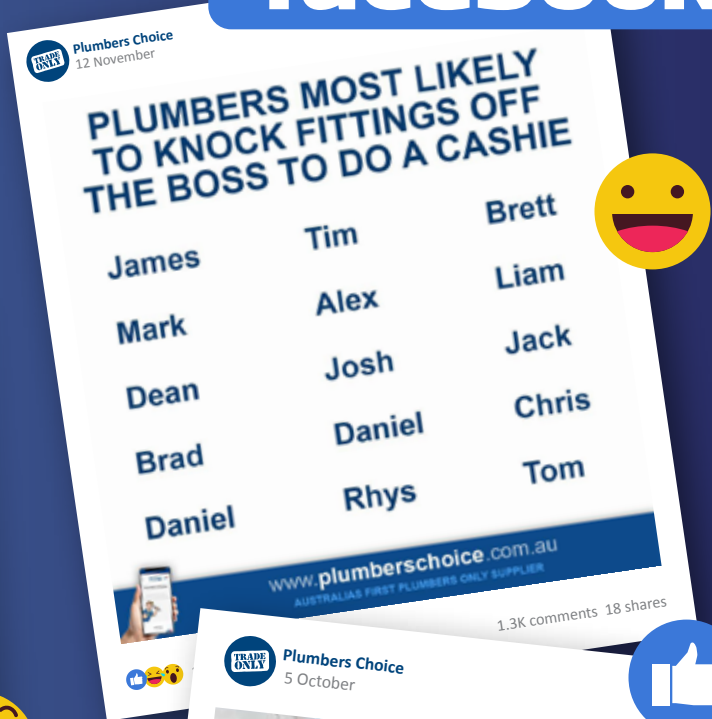
All Brassware complies with AS3688

PRICES INC. GST

Same day delivery for Sydney and Melbourne Metro

59K
FOLLOWERS

Join the ^{TRADE ONLY} Conversation on **facebook**



YOU SPOKE, WE LISTENED!

To continue to make things easier for you to support Trade Only, we've made a few additions to www.plumberschoice.com.au



ORDER TEMPLATES

Save Order Templates

You can now save custom Order Templates.

With just one click, add all the items from your Order Template to your shopping cart. Perfect for fit off packs, hottie kits or end of month stock top ups.



FAVOURITES

Favourite Items

Access to your favourite and most used items on the one page.

No more scrolling through to add the same items you buy every order. Now add them all from the convenience of one page.



QUOTES

Request a Quote

Want some gear quoted?

Haven't had some items priced up by your Sales Rep yet? Well, from the cart page you can now order or request a quote of the gear in your shopping cart.

Don't have an online account yet?

Head to www.plumberschoice.com.au/register/ and sign up today. Order any time from the convenience of your phone or laptop.



TIP OF THE MONTH

We'll tip **YOU** when you tip **US!**

Every featured story receives a **\$200 Store Credit**

Ever had to fit a lugged elbow from the other side of the wall? Try this with a Blockhead.



Thanks to Ben from Ben Goding Plumbing, \$200 store credit is coming your way.

To get involved send us an email info@plumberschoice.com.au

NEW!

WOMBAT



- Australian Designed
- Brass Shroud prevents spreading and splitting
- Tough NP3 compound which is heat resistant and hardwearing
- Passes 100,000 cycle test
- Complies with AS3718

10 Pack
Code: 8810

100 Pack
Code: 8811

