

# plumbers choice **TRADE ONLY**



*Times are tough.  
Get the trade only  
advantage!*

**CALL 03 9720 8274  
FOR A GOOD TIME/DEAL**

489 Mountain Highway, Bayswater, VIC 3153  
Email: [info@plumberschoice.com.au](mailto:info@plumberschoice.com.au) • Ph: Melbourne (03) 9720 8274 • Sydney (02) 8104 1314

[www.plumberschoice.com.au](http://www.plumberschoice.com.au)





# Luke's Editorial

Times are tough. Get the trade only advantage!

**Now might be the time to get the Trade Only advantage for your business.**  
The trading environment for plumbing businesses has probably never been tougher than it is at the moment. Your business deserves the Trade Only advantage.

- We will not sell to your customers. We are a genuine wholesaler, we will never sell to the general public.
- We do not give out prices to the general public, thus protecting the profit margins for your business.
- We only sell to plumbers. This means the quality of our product is higher to meet the needs of professional tradesmen.
- Our product range is always in stock.
- Competitive pricing.

**The future belongs to those who prepare for it today.**

**LUKE BOLTON - DIRECTOR, PLUMBERS CHOICE**

## HOW TO ORDER



**Online - 24 hours**  
www.plumberschoice.com.au



**Email - 24 hours**  
sales@plumberschoice.com.au



**Fax -** Please note Plumbers Choice is **no longer** accepting fax orders - Call or head to **plumberschoice.com.au** to order.



**Phone - Business Hours**  
Sydney (02) 8104 1314  
Melbourne (03) 9720 8274  
Our knowledgeable staff will take your order.



**At our Show Room**  
Mon - Fri 7:30am - 5pm  
489 Mountain Highway, Bayswater, Victoria 3153



**Personal Sales Rep**  
Your personal Sales Representative is able to tailor our service to suit your needs.

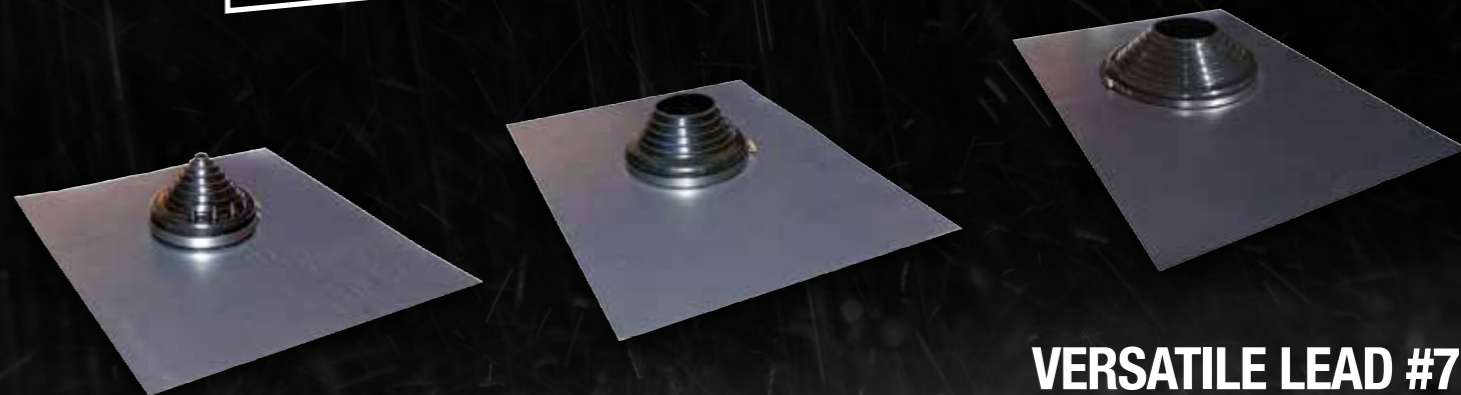


Have you checked out our **NEW** website?

**AQUARIUS**  
DISTRIBUTION



**BEAT THE PRICE RISE**



### VERSATILE LEAD #2

- 25 year guarantee
- BAL rated 12.5 - bush fire ready
- Tiled Roof
- EPDM will withstand constant temperatures of -40°C to 115°C.
- Lead based 490 x 410mm

CODE	COLOUR	PIPE SIZE
1348	Black	12mm - 125mm

### VERSATILE LEAD #3

- 25 year guarantee
- BAL rated 12.5 - bush fire ready
- Tiled Roof
- EPDM will withstand constant temperatures of -40°C to 115°C.
- Lead based 600 x 460mm

CODE	COLOUR	PIPE SIZE
1448	Black	100mm - 150mm

### VERSATILE LEAD #7

- 25 year guarantee
- BAL rated 12.5 - bush fire ready
- Tiled Roof
- EPDM will withstand constant temperatures of -40°C to 115°C.
- Lead based 850 x 600mm

CODE	COLOUR	PIPE SIZE
1449	Black	150mm - 300mm



**\$7.70**  
INC. GST

### AQUASEAL BLACK FLASHRITE #2 PRE-CUT

- Pull straight over 40mm to 50mm vent pipes

CODE	COLOUR	PIPE SIZE
1446	Black (EPDM)	40mm - 50mm

**20 YEAR WARRANTY**  
BAL CERTIFIED

**SPECIAL**



**\$4.95**  
INC. GST

### FLASHRITE MINI BLACK

- Pull straight over 3mm to 20mm penetrations

CODE	COLOUR	PIPE SIZE
1420	Black (EPDM)	3mm - 20mm

[www.aquariusrubber.com.au](http://www.aquariusrubber.com.au)

# SAFEST GAS CONNECTOR ON THE MARKET

**EXTENDO**  
GAS CONNECTOR

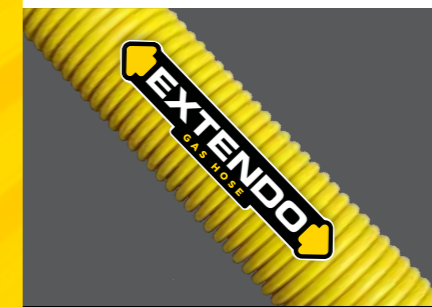
**F+F  
NOW  
AVAILABLE**



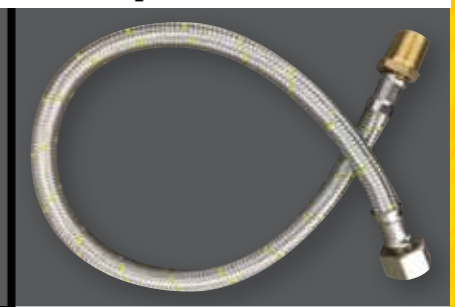
New Extendo

Traditional

## Extendability



Extendable

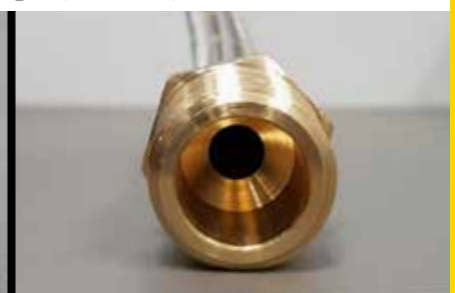


Fixed length

## Capacity (Flow)



3.5 times the capacity of traditional gas hoses



Reduced internal bore, restricting gas flow

## Flame Resistance



Superior flame & heat resistance



Rubber core is easily ignited

✓ Saves Space, **ONE** Connector does it all!

✓ Flame resistant stainless steel

✓ 12mm internal bore for better gas flow

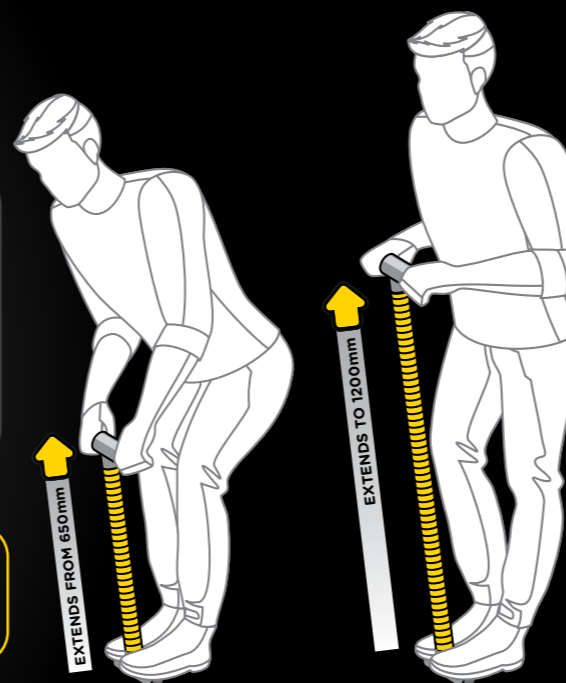
✓ AGA Approved 8633G

✓ 1/2" M+F

✓ 1/2" F+F



Extendable from **650mm** — TO — **1200mm**



\$237.63  
INC. GST

M+F Code: 6176  
F+F Code: 6178

**BOX  
10**



**HANDY TIP:**  
Attach brass tee to either end to create a handle



**BROMIC**  
PLUMBING & GAS



# SPECIAL

## VALVES



15mm



20mm

### GAS COCK 15mm

- AGA 6132 approved
- Flared copper compression
- 1/2 inch BSP

Code: 8100

ONLY  
**\$6.60**  
INC. GST

### GAS COCK 20mm

- AGA 6132 approved
- Flared copper compression

Code: 8101

ONLY  
**\$8.80**  
INC. GST

## BALL VALVES



- Dual approved for both water and gas

Ball Valve F x F 15mm **Code: 8200 \$6.05 INC. GST**

Ball Valve F x F 20mm **Code: 8201 \$8.25 INC. GST**

Valid until June 30th 2020



# Quickie Kit



Connections to unit allow for height adjustment

Universal swivel fittings for sideways adjustment

Gas valve included 20mm

Kit comes complete with high performance tempering valve



24 Month warranty



Insulation & cable ties provided to comply with AS3500

**Fit-off a hot water service in minutes!**  
Suits all instantaneous hot water services.

15mm outlet & tempering valve Code: 8300 | 20mm outlet & tempering valve Code: 8301

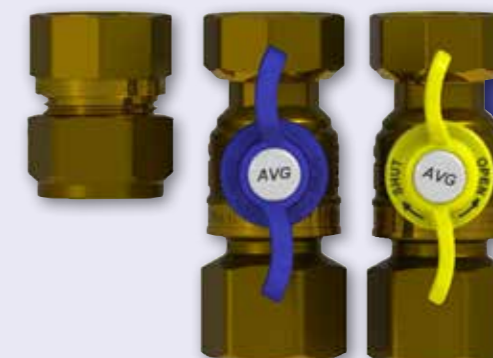
Andrew from AMT Plumbing in Bayswater said:

I recently tried the Quickie Kit on an install. I reckon it saved me at least 30-45 minutes. The insulation and cable ties included in the kit made for a nice neat finish. Everything I needed was there.

## Loose Nut Ball Valve Kit with Union

- Gas 20mm loose nut x 20mm female
- Water 20mm loose nut x 20mm female
- Outlet fitting 20Fi x 20C
- Hot water outlet fitting

Code: 8306



**Instantaneous Continuous Flow Kit**



# PRESS FITTINGS COPPER & BRASS

all prices include GST

## PRESS GAS FITTINGS



**PRESS GAS COUPLING**

CODE	SIZE	PRICE
8639	15mm	\$6.03
8640	20mm	\$7.74
8641	25mm	\$13.24



**PRESS GAS SLIP REPAIR COUPLING**

CODE	SIZE	PRICE
8642	15mm	\$5.78
8643	20mm	\$7.26
8644	25mm	\$11.26



**PRESS GAS ELBOW F/F 90°**

CODE	SIZE	PRICE
8645	15mm x 90	\$7.16
8646	20mm x 90	\$9.36
8647	25mm x 90	\$17.20



**PRESS GAS ELBOW F/F 45°**

CODE	SIZE	PRICE
8648	20mm x 45	\$11.17
8649	25mm x 45	\$14.89



**PRESS GAS REDUCING COUPLING F/F**

CODE	SIZE	PRICE
8650	20mm x 15mm	\$10.70
8651	25mm x 20mm	\$13.19



**PRESS GAS REDUCER M/F**

CODE	SIZE	PRICE
8652	20mm x 15mm	\$9.35
8653	25mm x 20mm	\$12.63



**PRESS GAS TEE**

CODE	SIZE	PRICE
8654	15mm	\$8.27
8655	20mm	\$14.26
8656	25mm	\$22.29



**PRESS GAS TEE REDUCING**

CODE	SIZE	PRICE
8657	20 x 20 x 15	\$14.72
8658	25 x 25 x 15	\$22.65
8659	25 x 25 x 20	\$25.04



**PRESS GAS END CAP**

CODE	SIZE	PRICE
8660	15mm	\$7.80
8661	20mm	\$8.79
8662	25mm	\$15.48



**PRESS GAS ELBOW LUGGED**

CODE	SIZE	PRICE
8663	15mm x 15FI	\$17.72
8664	20mm x 20FI	\$19.37



**PRESS GAS ELBOW LUGGED (90MM)**

CODE	SIZE	PRICE
8665	15mm x 15FM	\$18.33



**PRESS GAS ADAPTOR MI**

CODE	SIZE	PRICE
8666	15mm x 15MI	\$5.31
8667	20mm x 20MI	\$13.09
8668	25mm x 25MI	\$20.60



**PRESS GAS ADAPTOR FI**

CODE	SIZE	PRICE
8669	15mm x 15FI	\$7.16
8670	20mm x 20FI	\$10.90
8671	25mm x 25FI	\$14.86

## 25 YEAR WARRANTY\*

\* AusPress Copper press fittings are guaranteed for twenty five (25) years when;  
- installed with WaterMark approved copper tube compliant with AS1432 and, - the installer observes our recommended installation procedures as detailed in our product and technical information (available on our website) and, - the product is fit-for-purpose in conjunction with the intended application.

## PRESS WATER FITTINGS



**PRESS WATER COUPLING**

CODE	SIZE	PRICE
8601	15mm	\$2.26
8602	20mm	\$3.62
8603	25mm	\$8.38



**PRESS WATER SLIP REPAIR COUPLING**

CODE	SIZE	PRICE
8604	15mm	\$4.52
8605	20mm	\$6.70
8606	25mm	\$10.13



**PRESS WATER ELBOW F/F 90°**

CODE	SIZE	PRICE
8607	15mm x 90	\$2.60
8608	20mm x 90	\$4.41
8609	25mm x 90	\$12.75



**PRESS WATER ELBOW F/F 45°**

CODE	SIZE	PRICE
8610	15mm x 45	\$5.64
8611	20mm x 45	\$7.78
8612	25mm x 45	\$14.32



**PRESS WATER ELBOW M/F 90°**

CODE	SIZE	PRICE
8681	15mm	\$5.21
8682	20mm	\$6.85



**PRESS WATER REDUCING COUPLING F/F**

CODE	SIZE	PRICE
8613	20mm x 15mm	\$9.03
8614	25mm x 20mm	\$15.40



**PRESS WATER REDUCER M/F**

CODE	SIZE	PRICE
8615	20mm x 15mm	\$8.10
8616	25mm x 20mm	\$11.50



**PRESS WATER TEE**

CODE	SIZE	PRICE
8617	15mm	\$4.07
8618	20mm	\$7.58
8619	25mm	\$19.46



**PRESS WATER TEE REDUCING**

CODE	SIZE	PRICE
8620	20 x 20 x 15	\$13.01
8621	25 x 25 x 15	\$18.41
8622	25 x 25 x 20	\$22.11



**PRESS WATER END CAP**

CODE	SIZE	PRICE
8623	15mm	\$7.15
8624	20mm	\$8.67
8625	25mm	\$16.98



**PRESS WATER ELBOW LUGGED**

CODE	SIZE	PRICE
8626	15mm x 15FI	\$12.86
8627	20mm x 20FI	\$18.34



**PRESS WATER ELBOW LUGGED (90MM)**

CODE	SIZE	PRICE
8628	15mm x 15MI	\$11.32



**PRESS WATER ELBOW FI**

CODE	SIZE	PRICE
8629	15mm x 15FI	\$14.22
8630	20mm x 20FI	\$17.22



**PRESS WATER ELBOW MI**

CODE	SIZE	PRICE
8631	15mm x 15MI	\$13.70
8632	20mm x 20MI	\$17.23



**PRESS WATER ADAPTOR**

CODE	SIZE	PRICE
8633	15mm x 15MI	\$3.96
8634	20mm x 20MI	\$7.47
8635	25mm x 25MI	\$19.76



**PRESS WATER ADAPTOR**

CODE	SIZE	PRICE
8636	15mm x 15FI	\$6.35
8637	20mm x 20FI	\$8.10
8638	25mm x 25FI	\$14.43



**PRESS UNION**

CODE	SIZE	PRICE
8679	20mm Loose Nut x 20mm Press	\$11.31

- Flame-free
- Permanent V-Profile press join
- All fittings comply with Australian Standards AS3688



# PRESS BALL VALVES

all prices include GST



\$21.50  
INC. GST  
Code: 8590

## PRESS BALL VALVE WATER 15MM SOCKET X SOCKET

- Stainless steel handle and nut
- 25 year warranty\*
- Permanent V-Profile press joint, Flame free
- Complies with Australian Standards AS3688



\$27.16  
INC. GST  
Code: 8591

## PRESS BALL VALVE WATER 20MM SOCKET X SOCKET

- Stainless steel handle and nut
- 25 year warranty\*
- Permanent V-Profile press joint, Flame free
- Complies with Australian Standards AS3688



\$21.50  
INC. GST  
Code: 8592

## PRESS BALL VALVE WATER 15MM FI X SOCKET

- Stainless steel handle and nut
- 25 year warranty\*
- Permanent V-Profile press joint, Flame free
- Complies with Australian Standards AS3688



\$27.16  
INC. GST  
Code: 8593

## PRESS BALL VALVE WATER 20MM FI X SOCKET

- Stainless steel handle and nut
- 25 year warranty\*
- Permanent V-Profile press joint, Flame free
- Complies with Australian Standards AS3688



WATER

\$22.07  
INC. GST  
Code: 8594

## PRESS BALL VALVE GAS 15MM SOCKET X SOCKET

- Stainless steel handle and nut
- 25 year warranty\*
- Permanent V-Profile press joint, Flame free
- Complies with Australian Standards AS3688
- AGA 6132 approved



\$28.01  
INC. GST  
Code: 8595

## PRESS BALL VALVE GAS 20MM SOCKET X SOCKET

- Stainless steel handle and nut
- 25 year warranty\*
- Permanent V-Profile press joint, Flame free
- Complies with Australian Standards AS3688
- AGA 6132 approved



\$22.07  
INC. GST  
Code: 8596

## PRESS BALL VALVE GAS 15MM FI X SOCKET

- Stainless steel handle and nut
- 25 year warranty\*
- Permanent V-Profile press joint, Flame free
- Complies with Australian Standards AS3688
- AGA 6132 approved



\$28.01  
INC. GST  
Code: 8597

## PRESS BALL VALVE GAS 20MM FI X SOCKET

- Stainless steel handle and nut
- 25 year warranty\*
- Permanent V-Profile press joint, Flame free
- Complies with Australian Standards AS3688
- AGA 6132 approved



GAS

# BRASS COVER PLATES



Rough Brass  
1/2 Inch BSP  
Code 4001



Rough Brass  
3/4 Inch BSP  
Code 4002



# BRASS HOSE BIBS



HOSE BIB LEVER HANDLE  
1/4 TURN FI

CODE	SIZE	PRICE (INC GST)
3671	15mm	\$13.12
3672	20mm	\$16.13



HOSE BIB LEVER HANDLE  
1/4 TURN MI

CODE	SIZE	PRICE (INC GST)
3664	15mm	\$11.73
3667	20mm	\$14.43



HOSE BIB LEVER HANDLE  
DOUBLE OUTLET MI

CODE	SIZE	PRICE (INC GST)
3669	15mm	\$26.02
3670	20mm	\$29.86



HOSE BIB T/HEAD MI

CODE	SIZE	PRICE (INC GST)
3660	15mm	\$10.73
3661	20mm	\$11.84



HOSE BIB T/HEAD FI

CODE	SIZE	PRICE (INC GST)
3662	15mm	\$10.73
3659	20mm	\$14.22



HOSE BIB T/HEAD  
BACK PLATED MI

CODE	SIZE	PRICE (INC GST)
3663	15mm	\$15.24



HOSE BIB MI  
WITH VACUUM BREAKER

CODE	SIZE	PRICE (INC GST)
3668	15mm	\$21.36



All Brassware complies with AS3688

PRICES INC. GST



## HIGH PERFORMANCE FLEXIBLE MS SEALANT AND ADHESIVE

GREY Code: 8225 • WHITE Code: 9845 • BLACK Code: 8226



- UV resistant, absorbs acoustic and mechanical vibrations
- Highly flexible with up to 400% elongation
- Sticks and seals all common building materials, even in the wet
- Contains zero solvents and non-bubbling
- +/-25% cyclic expansion and low VOC
- Interior and exterior use

# Pex Clips

BAG  
QTY 100



**Pex Saddles  
MASONRY NAIL**

25mm Code: 9056 \$36.98



**Pex Saddles  
SD SCREW**

25mm Code: 4523 \$39.62



**DUALPEX  
SD SCREW**

16mm to 20mm  
Code: 5558 \$31.95



**DUALPEX  
MASONRY NAIL**

16mm to 20mm  
Code: 5559 \$29.63



**DUALPEX  
TWISTED NAIL**

16mm to 20mm  
Code: 7895 \$32.99



**DUALPEX  
TIMBER SCREW**

16mm to 20mm  
Code: 5568 \$32.99

PRICES INC. GST

## Saddle for **COPPER** MASONRY NAIL



**Saddle for Copper  
MASONRY NAIL 1/2 inch**

To Suit 1/2 Inch Copper Pipe  
Code: 9030 \$27.90

**Saddle for Copper  
MASONRY NAIL 3/4 inch**

To Suit 3/4 Inch Copper Pipe  
Code: 9031 \$33.78

**Saddle for Copper  
MASONRY NAIL 1 inch**

To Suit 1 Inch Copper Pipe  
Code: 9032 \$39.04

BAG  
QTY  
100

SADDLE FOR COPPER MASONRY NAIL

**BACK BY  
POPULAR DEMAND!**

**BULK SPECIAL**

**FREE SAW**  
WITH ANY  
**BOX OF PEX CLIPS**



**SAW  
VALUED AT  
\$67.73**

Valid until June 30th 2020

**FASTANOG  
BLOCK** **4x  
FASTER**

- Pre-loaded with bugle screws
- Set back measurer
- Fits small spaces
- Strong and versatile

**\$2.38**<sup>EACH</sup>  
INC. GST  
CODE: 1475

**BOX OF  
10**



**FASTANOG**

**PRELOADED  
WITH HEX SD SCREW**  
Extends 330mm – 600mm



Drill



Hex SD Screw



COMES  
WITH  
DRIVER  
BIT

CODE: 1471



**PRELOADED  
WITH BUGLE SCREW**  
Extends 330mm – 600mm



Drill



Bugle Screw

CODE: 1464



**MINI PRELOADED  
WITH BUGLE SCREW**  
Extends 190mm – 330mm



Drill



Bugle Screw

CODE: 1474



**SAY GOODBYE TO TIMBER NOGGINS**

PATENTED



# HOLE SAW KIT

- Excellent quality
- Bi-metal
- M2 high speed steel
- 8% Cobalt

## KIT CONTAINS

- 44mm to suit 40mm DWV
- 57mm to suit 50mm DWV
- 73mm to suit 65mm DWV
- 92mm to suit 90mm DWV
- 114mm to suit 100mm DWV
- 7/16 Arbor



\$176<sup>00</sup>  
INC. GST  
Code: 9429



SUITS  
STANDARD  
PVC SIZES

# TUNGSTEN HOLE SAW KIT

- Pilot drill has tungsten tip suitable for cement sheet or timber
- Sizes to suit DWV pipe
- Drill tips made from certified YB8C Tungsten

## KIT CONTAINS

- Tungsten tip arbor
- 44mm, 59mm, 73mm, 93mm & 114mm hole saws



\$198<sup>00</sup>  
INC. GST  
Code: 9430



GREAT  
FOR  
TIMBER  
FRAMES

# RAPID BORE KIT

- Long lasting and fast drilling
- The ultimate wood drilling tool
- Resharpenable

## KIT CONTAINS

- Allen Key for replacing Spirals
- Heavy duty steel carry case
- 2 x Spare Spirals
- File for sharpening
- 25mm, 32mm, 45mm & 57mm Rapid Bores



\$198<sup>00</sup>  
INC. GST  
Code: 9936



4X  
FASTER THAN  
TRADITIONAL  
HOLESAWS

# BLACK COVER PLATES

Powder coated black metal. Professional architectural finish.



## Flat

1/2 Inch BSP Flat  
Pack Qty 1 | Code 4018 | \$12.76ea



## Flat 40mm

40mm PVC Flat  
Pack Qty 1 | Code 4019 | \$20.67ea



## Square Flat

1/2 Inch BSP Flat  
Pack Qty 1 | Code 4025 | \$19.44ea



## 10mm Rise

1/2 Inch BSP 10mm Rise  
Pack Qty 1 | Code 4015 | \$13.46ea



## Flat 50mm

50mm PVC Flat  
Pack Qty 1 | Code 4020 | \$20.67ea



## Square Rise

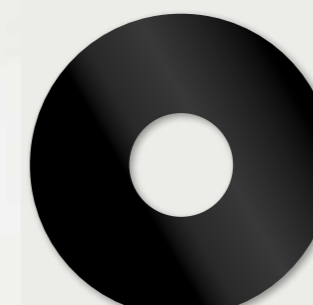
1/2 Inch BSP 10mm Rise  
Pack Qty 1 | Code 4026 | \$19.44ea



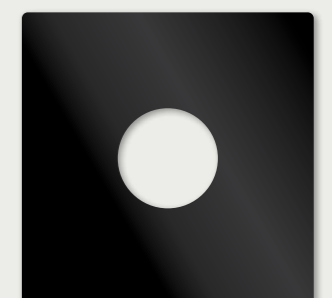
**COMPLETE**  
COVER PLATES



Black  
TILER'S  
BOO BOO



90mm Round  
Pack Qty 1 | Code 6173



90mm Square  
Pack Qty 1 | Code 6172



NEW



plumtool™

Innovative tools for PLUMBERS

# ADHESIVE COVER PLATES

**STRONG  
ABS  
PLASTIC**



100mm

**40mm  
PVC Pipe  
Adhesive  
Round**

Pack Qty 10  
Code 1198  
\$20.80 INC. GST

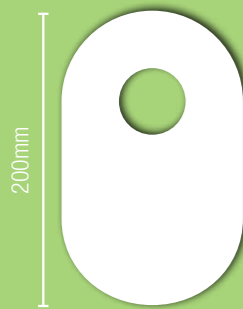
**NOW  
available in  
ROUND**



100mm

**50mm  
PVC Pipe  
Adhesive  
Round**

Pack Qty 10  
Code 1197  
\$20.80 INC. GST

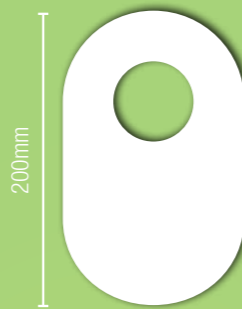


200mm

100mm

**40mm  
PVC Pipe  
Adhesive  
Oval**

Pack Qty 10  
Code 1196 | \$33.70 INC. GST

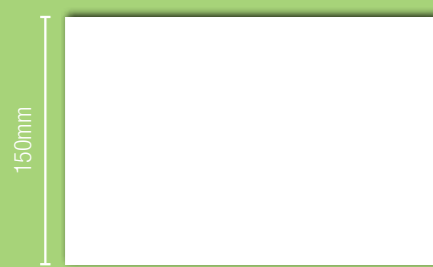


200mm

100mm

**50mm  
PVC Pipe  
Adhesive  
Oval**

Pack Qty 10  
Code 1195 | \$33.70 INC. GST



150mm

240mm

**Adhesive Patch**

Pack Qty 1  
Code 1199 | \$6.00 INC. GST



**Adhesive back  
for quick & easy installation**

- White to match inside of cupboard
- Great for covering drilling errors

**COMPLETE**  
COVER PLATES

**Fluidmaster**

## MONACO™ Universal Cistern with Link and Seat

1000A-002

**Bulk Pricing Available**  
Code: 2090



**10**

YEAR WARRANTY

**Upgrade to the Brand  
Trusted by Professionals and  
Toilet Manufacturers Worldwide**

- Extra Easy Install Features Built-in
- 4.5/3L Dual Flush Technology
- Simple Flush Volume Conversion to 6/3L or 9/4.5L
- UV Resistant - Certified
- Plastic Cistern with Bottom Inlet
- Saves Water

**WaterMark**  
WM-02914  
AS 1172.2

**WATER RATING**  
www.waterrating.gov.au  
**3.3** litres  
average flush  
4.5 litres max flush  
3 litres min flush  
In accordance with AS/NZS 4409  
Licence No. 1838  
FLUIDMASTER AUSTRALIA  
HOLDINGS PTY LTD

**EQUIPPED WITH FLUIDMASTER TECHNOLOGY**



**Inlet Valve  
400UK063**



**Outlet Valve  
560AU02**



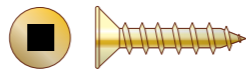
- Independently Tested & Proven - Best Flush System
- Simple Flush Volume Conversion to 6/3L or 9/4.5L
- No Height or Water Level Adjustments Needed

**Fluidmaster**  
www.Fluidmaster.com.au

09/19 FM91683

# SCREWS

## Fixings & Fastenings



BOX 1000

### CHIPBOARD SQUARE DRIVE SCREWS

- Positively stay on driver bit
- Zinc yellow

**FREE Driver Bit with every box**

CODE	LENGTH	GAUGE	PRICE
1587	25mm	8g	\$29.38
1807	32mm	8g	\$38.63
1808	35mm	8g	\$49.03
1810	40mm	8g	\$52.88
1811	50mm	8g	\$57.83



BOX 1000

### CHIPBOARD SQUARE DRIVE SCREWS

- Positively stay on driver bit
- Galvanised Grey Class 4

**FREE Driver Bit with every box**

CODE	LENGTH	GAUGE	PRICE
9542	25mm	8g	\$53.84
9545	32mm	8g	\$62.52
9546	35mm	8g	\$68.78
9549	40mm	8g	\$76.42
9556	50mm	8g	\$90.28

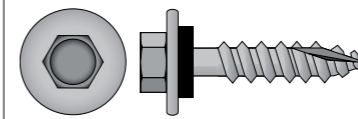


BOX 1000

### CHIPBOARD SCREWS

- Zinc Yellow

CODE	LENGTH	GAUGE	PRICE
9391	20mm	8g	\$25.55
9350	25mm	8g	\$26.48
9778	28mm	8g	\$33.74
9351	30mm	8g	\$34.62
1231	35mm	8g	\$44.05
9384	40mm	8g	\$48.55
9158	50mm	8g	\$54.73

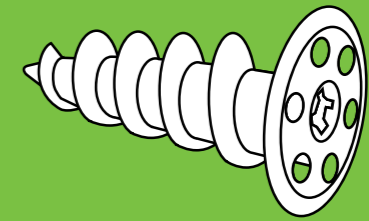


BOX 1000

### TYPE 17 SCREWS - WITH NEO

- Galvanised Grey Class 4

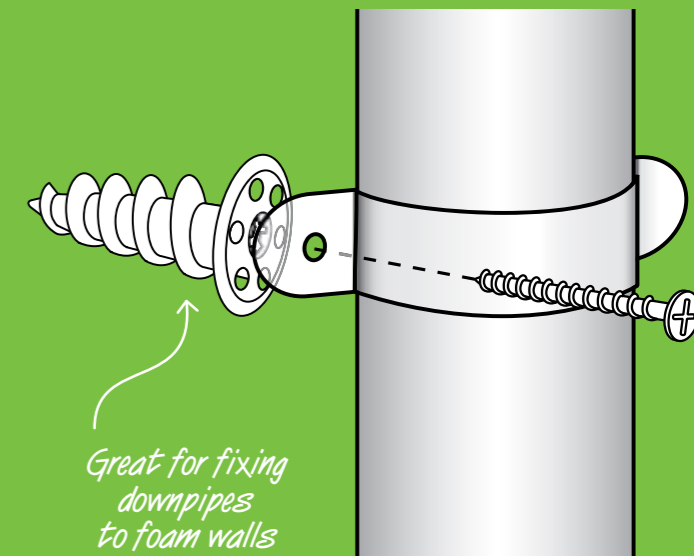
CODE	LENGTH	GAUGE	PRICE
9504	25mm	12g	\$110.67
9230	50mm	12g	\$115.91



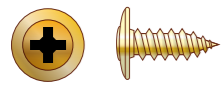
BAG QTY 50  
\$67.68  
INC. GST  
Code: 1223

## STYROSCREW

### A screw type fastening for polystyrene walls



Great for fixing downpipes to foam walls



BOX 1000

### BUTTON HEAD NEEDLE POINT SCREWS

- Zinc yellow
- Also known as stitching screw

CODE	LENGTH	GAUGE	PRICE
9553	12mm	8g	\$33.42
9554	16mm	8g	\$52.99
9201	20mm	8g	\$56.97
8961	25mm	8g	\$62.42
9422	30mm	8g	\$67.42



BOX 1000

### BUTTON HEAD NEEDLE POINT SCREWS

- Galvanised Grey Class 4
- Also known as stitching screw

CODE	LENGTH	GAUGE	PRICE
9142	12mm	8g	\$56.88
8957	16mm	8g	\$75.63
1336	20mm	8g	\$79.05
1337	25mm	8g	\$95.68



BOX 1000

### BUTTON HEAD SELF-DRILL SCREWS

- Fast Drilling
- Zinc yellow

CODE	LENGTH	GAUGE	PRICE
9122	12mm	8g	\$37.03
9366	16mm	8g	\$64.06
9552	20mm	8g	\$69.60
9581	25mm	8g	\$73.34
9180	30mm	8g	\$76.54



BOX 1000

### BUTTON HEAD SELF-DRILL SCREWS

- Fast Drilling
- Galvanised Grey Class 4

CODE	LENGTH	GAUGE	PRICE
9491	12mm	8g	\$60.68
1732	16mm	8g	\$82.05
1101	20mm	8g	\$87.15



BOX 1000

### FULL RANGE OF COLORBOND RIVETS

### RIVETS AS4-3 COLOURED

- Coloured rivets
- Aluminum head, steel stem
- Perfect colour match

\$30.52  
INC. GST



BOX 1000

### RIVETS AS4-3

- Roofers' Aluminium Steel
- Most common roofing rivets
- Aluminium head, steel stem

\$26.59  
INC. GST  
Code: 9933



BOX 1000

### BUGLE SCREWS

- Zinc yellow
- Fine thread

CODE	LENGTH	GAUGE	PRICE
9374	25mm	6g	\$20.26
1220	32mm	6g	\$23.57
9473	45mm	6g	\$52.46
9202	50mm	7g	\$54.90

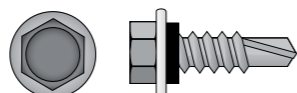


BOX 1000

### BUGLE SCREWS

- Zinc yellow
- Coarse thread

CODE	LENGTH	GAUGE	PRICE
9731	25mm	7g	\$27.68
8964	32mm	7g	\$37.13



BOX 1000

### HEX HEAD SELF-DRILL SCREWS - WITH NEO

- Fast Drilling
- Galvanised Grey Class 4

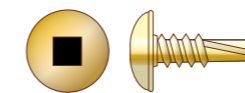
CODE	LENGTH	GAUGE	PRICE
1354	16mm	10g	\$110.89
9532	25mm	10g	\$164.98



### SQUARE DRIVER BITS

- For all our Square Drive screws

CODE	LENGTH	QTY	PRICE
9282	50mm	1	\$3.23
9477	75mm	1	\$4.62
9497	100mm	1	\$5.72
1774	150mm	1	\$7.87



BOX 1000

### BUTTON HEAD SQUARE DRIVE SELF-DRILL SCREWS

- Fast Drilling
- Zinc yellow

**FREE Driver Bit with every box**

CODE	LENGTH	GAUGE	PRICE
9451	12mm	8g	\$47.17
9272	16mm	8g	\$70.70
9309	25mm	8g	\$83.55



BOX 1000

### BUTTON HEAD SQUARE DRIVE SELF-DRILL SCREWS

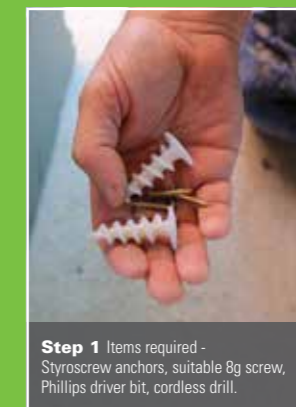
- Fast Drilling
- Galvanised Grey Class 4

**FREE Driver Bit with every box**

CODE	LENGTH	GAUGE	PRICE
9498	12mm	8g	\$67.11
9514	16mm	8g	\$80.91
9899	30mm	8g	\$101.28

\*All prices include GST

\*All prices include GST



Step 1 Items required - Styrocrew anchors, suitable 8g screw, Phillips driver bit, cordless drill.



Step 2 Using a Phillips driver bit, screw the Styrocrew into the polystyrene wall until the flange is flush.



Step 3 Place the clip or bracket over the Styrocrew anchor and secure with the metal screw you have selected.

# SCREWS

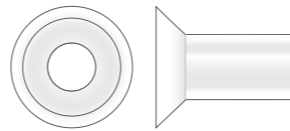
## Fixings & Fastenings



### PAN SCREW CAP - PUSH IN

• Bag of 100

**\$19.47**  
INC. GST  
Code: 1406



**BOX 100**

### PAN SAVERS NYLON

• Protect toilet pans from damage

**\$20.24**  
INC. GST  
Code: 1983

## PAN SCREWS WITH A PHILLIPS DRIVE ARE QUICKER AND EASIER TO USE.

One thing that many people don't realise is that the Phillips drive in the head of the pan screw is a size No 3. Using the correct size Phillips drive gives better control of the screw and reduces the chances of slipping and chattering. No 3 Phillips drivers are available in 100mm (Code 9609).

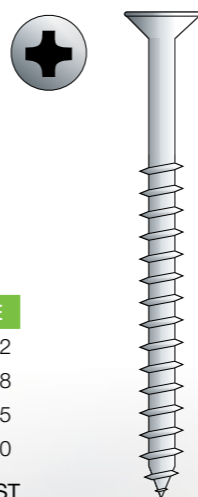
**BOX 100**

### PAN SCREWS

• Stainless Steel  
• Non-corrosive

CODE	LENGTH	GAUGE	PRICE
9622	25mm	12g	\$45.52
9186	50mm	12g	\$54.88
2505	65mm	12g	\$70.35
1400	75mm	12g	\$91.20

\*All prices include GST



*Stainless steel washer and screw. Will not rust*

## TOGGLE SPRING FOR CISTERNS

- 3/6 Inch x 75mm
- Stainless steel stem and washer - will not rust
- Use 12mm drill bit through plaster
- Zinc plated toggle designed to give maximum holding power in cavity walls

**\$2.05**  
each  
INC. GST  
Code: 3157



## UV STABILISED BLACK NYLON TAP-INS WILL NOT FAIL!



- Black Tap-Ins will not fail when exposed to the sun
- Decero coated nails will not rust (exceeds 1000 hour salt spray test)



**Weather affected Nylon Tap-Ins are a thing of the past!**



**BOX 500**

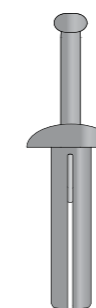


### NYLON TAP-INS - UV BLACK

- For outdoor use
- Black Nylon UV stabilised will not perish

CODE	LENGTH	QTY	PRICE
9524	5mm x 25mm	500	\$77.70
1187	5mm x 40mm	500	\$110.17

**BOX 100**



### METAL TAP-INS - MUSHROOM HEAD

- Strong cast alloy

CODE	LENGTH	QTY	PRICE
9387	5mm x 25mm	100	\$33.20
1967	6.5mm x 25mm	100	\$42.18
1968	6.5mm x 32mm	100	\$44.99
1705	6.5mm x 40mm	100	\$47.68

**BOX 100**



### NYLON TAP-INS - MUSHROOM HEAD

- 100% nylon, not plastic

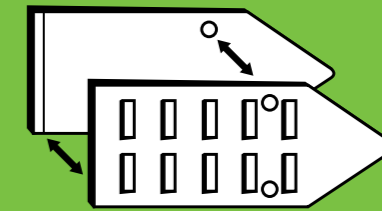
CODE	LENGTH	QTY	PRICE
9345	5mm x 25mm	100	\$14.53
9925	6.5mm x 50mm	100	\$20.13

### NYLON TAP-INS - ROUND HEAD

- 100% nylon, not plastic

CODE	LENGTH	QTY	PRICE
9978	5mm x 25mm	100	\$14.24
9907	5mm x 25mm	500	\$62.82
9179	5mm x 40mm	100	\$20.35
9973	5mm x 40mm	500	\$87.16
9567	6.5mm x 25mm	100	\$14.77
2262	6.5mm x 40mm	100	\$21.25

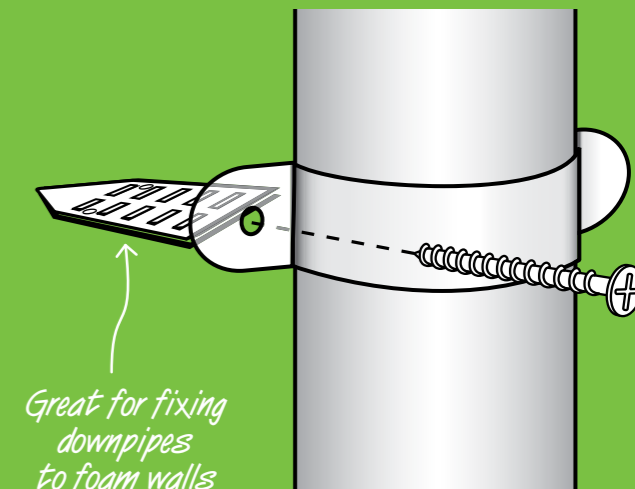
\*All prices include GST



**BAG QTY 50**  
**\$56.25**  
INC. GST  
Code: 1222

## STYROWEDGE

### A wedge type fastening for polystyrene walls



*Great for fixing downpipes to foam walls*

NB. Ensure all penetrations are sealed.



**Step 1** Using a sharp blade, cut a 30mm slot, 50mm deep into the wall.



**Step 2** Take 2 Styrowedge halves and join the smooth sides together.



**Step 3** Insert the Styrowedge into the slot in the wall.



**Step 4** Ensure the Styrowedge is flush with the finish of the wall.



**Step 5** Place the downpipe and clip in position on the wall. Insert an 8-12 gauge screw into the Styrowedge and tighten into place.



**Step 6** Complete for remaining fastenings.



# TAPWARE

## CHROME PLATED FINISH

# NEW



### WALL SINK SET

Code: 3703 \$87.27 (INC. GST)



### HOB SINK SET

Code: 3706 \$96.18 (INC. GST)



### BASIN SET

Code: 3700 \$81.77 (INC. GST)  
Code: 3699 Ceramic Disc \$124.47 (INC. GST)



### SHOWER SET

Code: 3702 \$56.47 (INC. GST)



### BOOSTER HANDLES & BUTTONS

Code: HD09 \$5.49 (INC. GST)



### BATH SET

Code: 3701 \$51.33 (INC. GST)



### BASIN TOP ASSEMBLIES

Code: 3707 \$36.16 (INC. GST)  
Code: 3712 Ceramic Disc \$68.18 (INC. GST)



### WALL TOP ASSEMBLIES

Code: 3704 \$36.16 (INC. GST)  
Code: 3710 Ceramic Disc \$68.18 (INC. GST)



### SHOWER ROSE UNIVERSAL ALL DIRECTIONAL

Code: SH02 \$19.54 (INC. GST)  
Code: SH02SW Loose Nut \$22.22 (INC. GST)



### TOP ASSEMBLIES RECESSED 15mm

Code: 7500 \$15.18 (INC. GST)



### BASIN SET LEVER HANDLE EZ CLEAN ANTI-VANDAL

Code: 3737 \$152.76 (INC. GST)



### SWIVEL SPOUT WALL TUBE C/P 180mm

Code: 7095 \$19.45 (INC. GST)



### SWIVEL SPOUT HOB TUBE C/P 180mm

Code: 7096 \$19.05 (INC. GST)



### LAUNDRY ARM SWIVEL C/P 150mm

Code: 3711 \$11.15 (INC. GST)



### WASHING MACHINE CONVERSION UNIT UNIVERSAL

Code: WMC \$168.12 (INC. GST)



### WASHING MACHINE SET

Code: 3705 \$43.86 (INC. GST)



### PILLAR TOP ASSEMBLY EZ CLEAN ANTI-VANDAL

Code: 3730 \$45.26 (INC. GST)



# Jacko's Review

**SPECIAL**

**\$825.00** INC. GST

Code: 2010

**SAVE \$680.31**

## GENERAL WIRE KINETIC WATER RAM

Light weight tool for quickly unblocking sinks, toilets and tubs. It handles rust, grease, sediment, and scale in lines up to 4 inches in diameter.

**DELUXE KIT**



Impressive bit of kit, these things really pack a punch or you can even dial it down if required. If you want to impress your customer turn up with one of these they will never question your bill.

Gerard from GXR Plumbing and Gas

G

### Deluxe Kit includes:

- Caulking hose, 4 inch tapered rubber cone and five tapered rubber cones and five tapered rubber plugs for sealing openings from 1 and 1/4 inch through 4 inch
- Carrying case
- 6" Rubber cone
- Four expansion plugs
- Check Valve
- Water supply hose
- Universal faucet adapter
- Toilet attachment
- 22" extension hose
- Threaded faucet adapter
- No Dangerous Chemicals

# BULK SPECIAL

## BUY ANY 10 MIXERS

SINK • BASIN • SHOWER

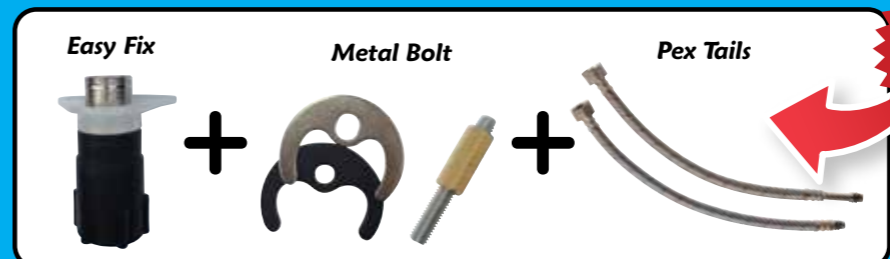


**BASIN MIXER FIXED**  
1500kPa  
120mm Code: 2866

**BASIN MIXER SWIVEL**  
1500kPa  
120mm Code: 2835

**SINK MIXER SWIVEL**  
1500kPa  
225mm Code: 2830

**SHOWER MIXER**  
1500kPa Code: 2865



**BASIN & SINK MIXERS COME WITH**

**ONLY \$693.00**  
INC. GST



**GET A FREE SLIMLINE WRENCH SET**  
WITH ANY 10 MIXER BULK PURCHASE  
VALUED AT \$180.46



plumtool™

Valid until 30th June 2020

# WINTER IS ~~COMING~~ HERE



## MANOMETERS



Includes  
Hand  
Bellows

### DRY MANOMETER 10kPa KIT

- Fast accurate way to test gas fitting lines
- The Dry Manometer fits directly onto the gas stand pipe
- No more leaky hoses or water loss to deal with
- No batteries required
- Can be calibrated by plumber
- Supplied in a sturdy steel case
- Kit comes with hand bellows
- Spare parts available

Code: 1905



### DIGITAL MANOMETER SINGLE PORT

- Simple to use
- Suitable for appliance and line testing to 15kPa
- Within 1% accuracy
- Complete with hose and case
- 3 year warranty

Code: 1608



### DIGITAL MANOMETER COMBO

- One kit does two jobs
- Operating Range 0 kPa to 10 kPa
- Accuracy 0.5% over operating range
- Operating Temperature -10°C to 95°C
- For testing gas lines and appliances

#### Kit contains:

- Digital Gauge with click on connection
- 700mm rubber hose with click on connection
- Testing Tee with click on connection
- Hand Bellows

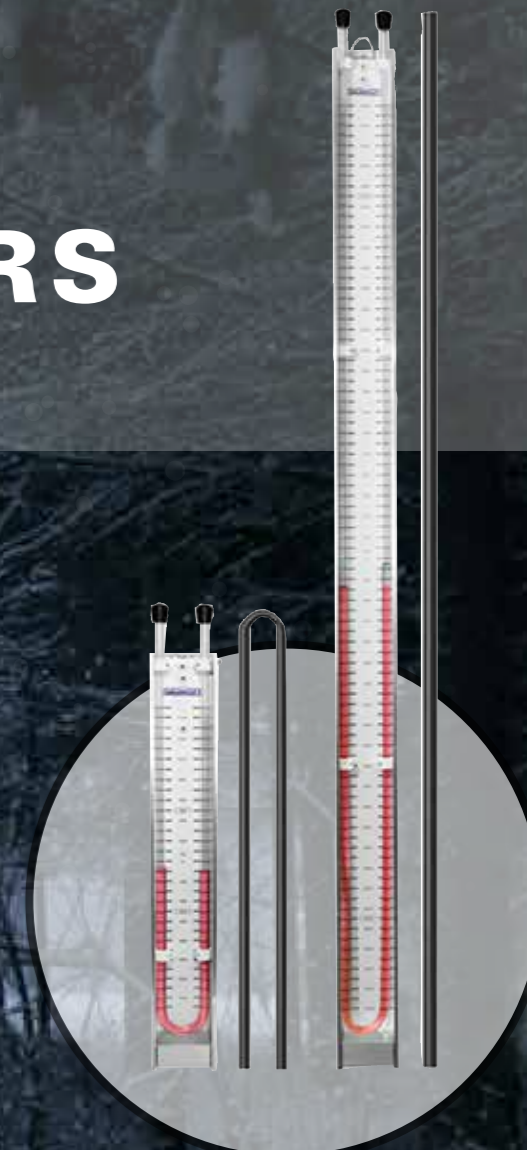
Code: 1826



### DIGITAL MANOMETER KIT

- Suitable for appliance & line testing 0-15kpa
- Within 1% accuracy
- 3 year warranty
- Comes with hose and hand bellows
- Comes with testing tee

Code: 4512



### MANOMETER

- Aluminium case
- Durable cover protects calibrations
- 300mm manometer for appliance testing
- 800mm manometer for line testing
- Magnet is riveted to the back of the 300mm Manometer case to allow the manometer to be attached to an appliance
- Comes complete with rubber connecting hose
- Designed to meet all the requirements of the professional plumber

**300mm**  
Code: 1870

**800mm**  
Code: 1743

# PLUMBERS CHOICE OFFERS A 100% CONTACT FREE SERVICE.

Head to our website or give us a call to have all your goods dropped at your door with **FREE delivery\***

\*For all orders over \$100

[WWW.PLUMBERSCHOICE.COM.AU](http://WWW.PLUMBERSCHOICE.COM.AU)

HELP STOP THE SPREAD AND STAY HEALTHY



TIP OF THE MONTH

We'll tip **YOU** when you tip **US!**



Every featured story receives a **\$200 Store Credit**

REPURPOSING WAX PAN SEAL



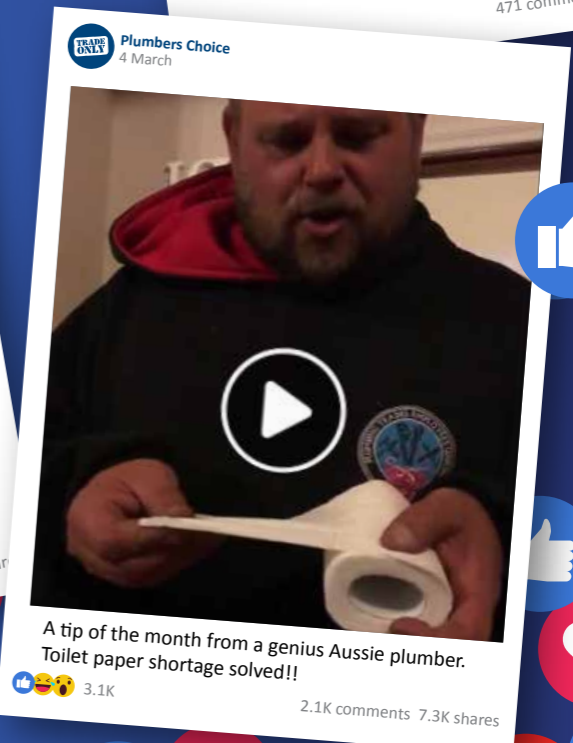
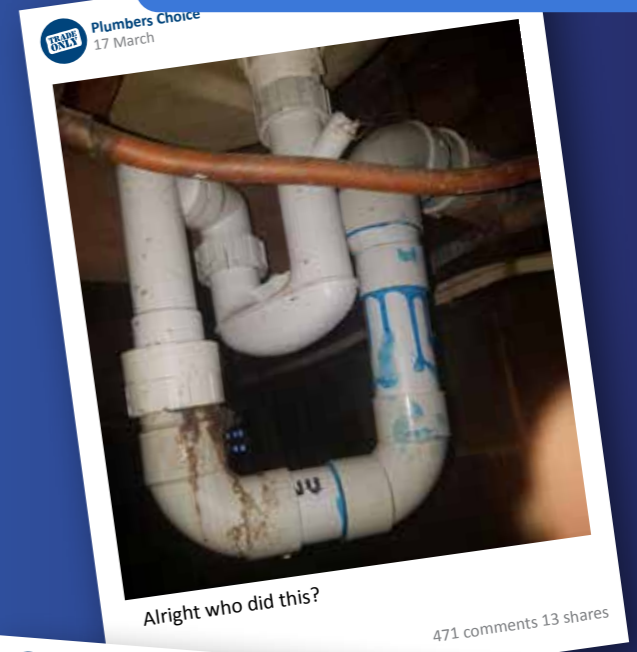
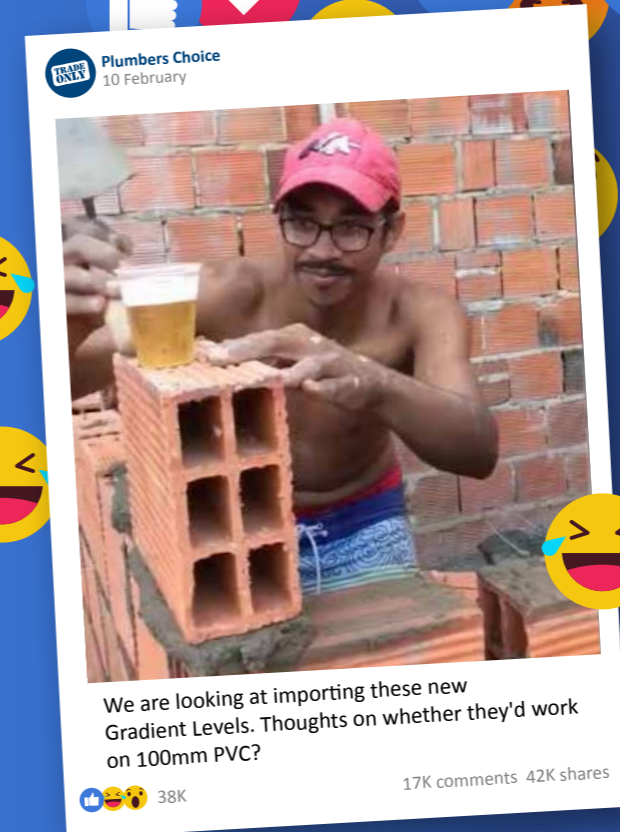
Use a Wax Pan Seal to create a new gasket on an old cast iron inspection opening. Simply cut and splice Wax Seal in half to form gasket around inspection opening or gate and re-fit.  
**Gerald Beer**

Thanks mate, we'll be sending you \$200 store credit

To get involved send us an email [info@plumberschoice.com.au](mailto:info@plumberschoice.com.au)

56K FOLLOWERS

Join the **TRADE ONLY** Conversation on **facebook**





# SPILL SAFE



**STOP THE SLOP**



1 Tip entire contents into pan



2 Allow to set

3 Remove pan

- Turn the pan water to GEL
- No more water spills to clean up

\$7.27  
INC. GST  
Code: 2509

**RED BACK**



# DRAIN DYE

**NON TOXIC TO THE ENVIRONMENT**

- Designed to trace waterflows in sewer & storm water drains
- 40g tub contains: 20g green & 20g red



1kg Red	1kg Green	40g tub
\$224.14	\$224.15	\$24.74
INC. GST	INC. GST	INC. GST
Code: 9902	Code: 2511	Code: 1947

**RED BACK**



# PLUG & WASTE

**AVAILABLE NOW**



**PLUG & WASTE QUATTRO POP UP**

**4 in 1**

- Suitable for use on basins with or without overflow
  - Suitable for 32 & 40mm outlets
- 40/32 \$21.39 INC GST Code: 9005



**PLUG & WASTE PLASTIC WITH S/S TRIM**

40mm \$5.63 INC GST Code: 9024



**PLUG & WASTE CHROME WITH OVERFLOW**

32mm \$20.57 INC GST Code: 9022  
40mm \$20.57 INC GST Code: 9020



**PLUG & WASTE CHROME**

32mm \$20.57 INC GST Code: 9023  
40mm \$20.57 INC GST Code: 9021

# Plumbers' Bedding Compound

*For a professional finish*

\$21.45  
INC. GST  
Code: 1846

- Easier clean up than silicone
- Remains flexible
- Temperature range: -10°C to +100°C
- Made in Germany

**MADE IN GERMANY**

**Applications: Plug Sink Toilet**



1. Roll out and place around plug and washer



2. Tighten plug and washer into place



3. Remove excess compound



4. Job completed



- For a professional finish inside the cupboard.
- Flexy Flange cupboard plate fits tight to pipe which makes it ant-proof.

# 1 Flexy Flange Fits 4 Sizes!

**Small**

80mm

Suits 9-22mm pipe

Pack Qty 10

**\$21.81** INC. GST  
Code: 8250

Copper 1/2"    Rehau 16mm    Sharkbite 20mm    1/2" BSP (22mm)

**Medium**

90mm

Suits 22-44mm pipe

Pack Qty 5

**\$14.47** INC. GST  
Code: 8252

Corrugated    Copper    Hose

**Large**

105mm

Suits 40-60mm pipe

Pack Qty 5

**\$16.13** INC. GST  
Code: 9968

40mm Pipe    40mm Socket    50mm Pipe    50mm Socket

**Rectangle**

115mm

170mm

Suits 40-60mm pipe

Pack Qty 5

**\$21.45** INC. GST  
Code: 2202

40mm Pipe    40mm Socket    50mm Pipe    50mm Socket

# CARBON MONOXIDE ANALYSER

Code: 8020

**NEW**

- Suitable for testing as per VBA Carbon Monoxide Safety Program
- Measures carbon monoxide in ambient applications as well as high heat flue situations.
- Measures 0 ~ 10,000 ppm CO
- Save and recall readings with time and date stamp
- Pump driven
- 1 PPM sensitivity
- Infrared port for use with optional A740 IR printer



**FREE SMOKE PEN WITH ANALYSER**  
Valid until 30th June 2020

## Smoke Pen



### SMOKE PEN

**\$83.06** INC. GST  
Code: 9837

**NEW**

- Specified for carbon monoxide testing
- Ideal for testing the slightest air movement & gas spillage
- HVAC air movement or leakage checks
- Comes with 6 smoke wicks
- Refill packs of wicks available
- Non-toxic

As seen on VBA Training video [www.vba.vic.gov.au/carbon-monoxide-safety-program](http://www.vba.vic.gov.au/carbon-monoxide-safety-program)

**CHS** CHRIS HUNTER SALES

# SPECIFICALLY DESIGNED FOR CUTTING PVC



**30% MORE  
EFFICIENT THAN  
STANDARD BLADES**

**CUTS STRAIGHT  
EVERYTIME**

**BATTERIES  
LAST LONGER**

**CUT IS FREE  
OF BURRS**



## **SAMURAI RECIPROCATING SAW BLADE PVC**

• 210mm • 16TPI • Made in Japan

CODE: 9632

**SPECIAL**

**\$18.78**

INC GST

## **ROUNDING PLIERS 1/2"CU**

- Suitable for 1/2 (15mm) copper
- Rounds out copper in seconds
- Lightweight and compact

**\$50.92**

INC. GST

Code: 9988



**ROUNDS  
OUT  
COPPER IN  
SECONDS!**



**plumtool™**

*Innovative tools for* **PLUMBERS**