

plumbers
choice **TRADE
ONLY**

WANTED

TRADE ONLY

PLUMBERS



REWARD

SAVING YOUR INDUSTRY

489 Mountain Highway, Bayswater, VIC 3153
Email: info@plumberschoice.com.au • Ph: Melbourne (03) 9720 8274 • Sydney (02) 8104 1314

www.plumberschoice.com.au





Luke's Editorial

WANTED

This month we are calling out to all plumbers who care about their industry.

We want you to join with us in changing our industry for the better.

The rewards are clear:

- More respect, work and profit for licensed plumbers.
- A higher standard of plumbing work in the community.

This means safer drinking water, safer disposal of waste, safer gas installations.

We want to hear from you.

LUKE BOLTON - DIRECTOR, PLUMBERS CHOICE



HOW TO ORDER



Online - 24 hours

www.plumberschoice.com.au



Email - 24 hours

sales@plumberschoice.com.au



Fax - Please note Plumbers Choice is **no longer** accepting fax orders - Call or head to plumberschoice.com.au to order.



Phone - Business Hours

Sydney (02) 8104 1314
Melbourne (03) 9720 8274
Our knowledgeable staff will take your order.



At our Show Room

Mon - Fri 7:30am - 5pm
489 Mountain Highway, Bayswater, Victoria 3153



Personal Sales Rep

Your personal Sales Representative is able to tailor our service to suit your needs.

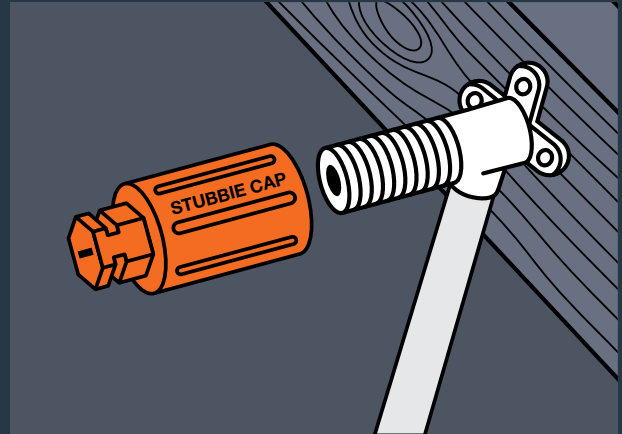


Have you checked out our **NEW** website?

STUBBIE

TEST CAP

Sometimes shorter is better!



- Easier to install cabinets
- Can be removed with screw driver or shifter
- Safer high visibility
- Available in a bag of 100

\$1.19 each
INC. GST

Code: 4803



BRASS STUBBIE TEST CAP

- Shorter, makes it easier to install cabinets.
- Never leaks or fails
- Use over & over again

NOW ONLY

\$4.00 each
INC. GST

Code: 4804



TEST PLUG DUO GREY

- Duo plug and cap combination
- For testing hot and cold water installations
- One product does both plug and test cap

\$2.34 each
INC. GST

Code: 5052



TEST CAP DRAINABLE

- Small removable plug for easy drainage of water line
- Eliminates spilling inside wall cavity

\$2.44 each
INC. GST

Code: 5053



SPECIFICALLY DESIGNED FOR CUTTING PVC

**30% MORE
EFFICIENT THAN
STANDARD BLADES**

**CUTS STRAIGHT
EVERYTIME**

**BATTERIES
LAST LONGER**

**CUT IS FREE
OF BURRS**

SPECIAL

\$18.26
INC GST

SAMURAI RECIPROCATING SAW BLADE PVC

• 210mm • 16TPI • Made in Japan

CODE: 9632



"Where were these blades 5 years ago – they are the **strongest and sharpest blades I've used**, all cuts are dead straight and it's very handy in tight spaces. I haven't bothered using a PVC saw since I bought these. **Highly recommended!**"

– Liam Hornet Plumbing

RECIP SAW BLADES

- A range of blades to cut Metal, Timber & PVC
- Fits all model saws
- Bi-metal blade super flexible & strong
- Made in USA



150mm x 24 TPI
Code 9467
Metal

\$9.41
INC. GST



150mm x 14 TPI
Code 9625
Multi-purpose

\$9.41
INC. GST



150mm x 10 TPI
Code 1759
Multi-purpose

\$9.41
INC. GST



150mm x 6 TPI
Code 1756
Wood

\$9.41
INC. GST



200mm x 18 TPI
Code 9652
Metal

\$12.64
INC. GST



200mm x 14 TPI
Code 9639
Wood, Metal, Plastic, Multi-purpose

\$12.64
INC. GST



229mm x 6 TPI
Code 9468
Wood

\$12.64
INC. GST



PUMP ACTION DRAIN CLEANER

Best of breed pump action drain plunger. Built for professionals. Comes with two rubber adaptors, one for sinks one for toilets,



\$154.00
INC. GST

CODE: 3999

plumtool™

Innovative tools for **PLUMBERS**

SPECIAL

VALVES



ONLY
\$44⁰⁰
INC GST



ONLY
\$33⁰⁰
INC GST

PTR VALVES

- 2 year warranty
- HT55
- Comes with insulation

1000 kPa **Code: 1626**

1400 kPa **Code: 1628**

COLD WATER EXPANSION VALVES

- 2 year warranty
- Comes with insulation

1200 kPa **Code: 3604**

850 kPa **Code: 3605**

Valid until April 30th 2020



STEEL STUDWORK?

plumbers choice

HAS THE ANSWERS!

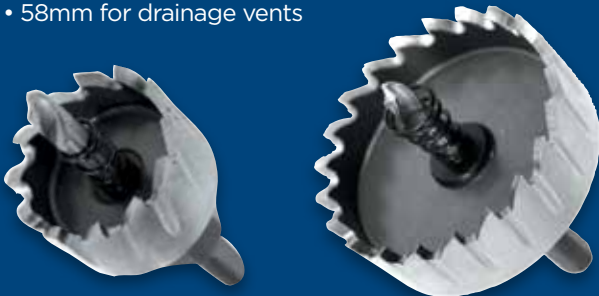


34MM
AND
58MM



STEEL STUD DRILL

- Also great in roofing work for overflows, etc
- 34mm to suit yellow grommets
- 58mm for drainage vents



34mm

58mm

\$66⁰⁴
INC. GST
Code: 2000

\$142³⁶
INC. GST
Code: 2001



STUD CLIPS - WITH SD SCREW

- Works in any size hole

BAG
100

16MM
AND
20MM



16mm

20mm

\$27²³
INC. GST
Code: 5571

\$28⁹²
INC. GST
Code: 5572



\$561⁰⁴
INC. GST
Code: 1914



STUD PUNCH

- For the plumber in a hurry!
- Designed for cutting holes in steel stud work
- Cuts holes super fast



MULTI-FIT GROMMET

Works in varying thicknesses of studwork (thickness 0.42mm to 2mm)
Complies to Australian Standards AS3500.12 Clause 5.5 2.2 Part C



BAG
100

\$363⁷
INC. GST
Code: 9241



ONE CLIP FITS 16MM-20MM PEX PIPE

BAG
100



\$310⁶
INC. GST
Code: 5558

DUALPEX CLIP SD SCREW

BAG
100



\$333¹
INC. GST
Code: 5575

DUALPEX CLIP SD SCREW WITH TAB

DUALPEX

- Strong self-drilling screw included
- Clips onto the pipe and stays in position until screw is driven in
- Saves time sorting out clips
- Uses half the space in your nail bag
- Save money by only stocking one clip
- Patented

PRELOADED

WITH HEX SD SCREWS
Code: 1471



UNLOADED

Code: 1450



MINI PRELOADED

WITH BUGLE SCREWS
Code: 1474



FASTANOG

- Adjustable length 330mm to 600mm
- Faster than timber noggins
- Compulsory in termite areas
- Set back measurer



preloaded
set back
measurer

SLIDE TO ADJUST LENGTH





APPROVED DRAIN LAGGING

- Approved drain lagging where pipes pass through concrete
- Australian Draining Standards 3500 Part 2.2 Clause 3.8.2b states - "Drains laid through footings shall be installed with an annular space of not less than 25mm filled with a liner of flexible material"

40mm x 600mm	\$7.88	Code: 9900
50mm x 600mm	\$7.88	Code: 9901
65mm x 600mm	\$7.88	Code: 8922
100mm x 600mm	\$8.05	Code: 9244
150mm x 600mm	\$9.46	Code: 1902

[All prices are per half] *All prices include GST



DOES YOUR JOB COMPLY?

Fast and Simple Solution!



1. Take 2 pieces of Styrolag and place around pipe



2. Fit two halves together, secure first end with duct tape



3. Secure other end with duct tape. Job completed.



DOES YOUR JOB COMPLY?

10 metres x 100mm x 5mm

- Compression resistant
- Closed Cell Polyethylene
- Prevents water penetration under the slab
- Complies with the following Australian Standard...

AS2870-2011 5.6.4 (a)

"Closed-cell polyethylene lagging shall be used around all stormwater and sanitary plumbing drain pipe penetrations through footings. The lagging shall be a minimum of 20mm thick on Class H1/H1-D sites and 40mm on Class H2/H2-D and Class E/E-D sites."



TOUGH AND DURABLE



\$15⁴² INC. GST
Code: 9720

The mark of a genuine Fernco PlumbQwik®
It's not a PlumbQwik® unless it says Fernco®



100mm Earthenware to PVC

\$6.60
INC. GST

Code: 5018



100mm PVC to PVC

\$6.60
INC. GST

Code: 5019



90mm PVC to PVC

\$6.60
INC. GST

Code: 5020



50mm PVC

\$6.60
INC. GST

Code: 5023



40mm PVC

\$6.60
INC. GST

Code: 5022



**6X
FASTER THAN
ROLLERS &
BRUSHES**

plumtool

Solvent Mates

A better alternative for
applying Priming Fluids
& Solvent Cements

- For use in joining PVC pipes & fittings
- Reduces contact with harsh chemicals
- Avoids mess

\$62⁴¹
INC. GST
Code: 5609



Glutote

Knocking over your
glue pot can be very
expensive

**STORES
500ml GLUE
& PRIMER**

\$49⁵¹
INC. GST
Code: 1695

- Also stores Solvent Mate Applicator pair
- Great for hooking onto ladders!
- Spike can be pushed into ground to prevent spillage on uneven surfaces
- Solvent Mate Applicators not included

plumtool

Spike can be pushed into
ground to prevent spillage
on uneven surface.



PATENTED

Stick with quality glue YOU CAN TRUST



Priming Fluid PVC Clear 500ml Roller	Code: 9630	\$7.37
Priming Fluid PVC Red 500ml Roller	Code: 9920	\$6.66
Priming Fluid PVC Clear 4 Litre	Code: 1841	\$36.48
Priming Fluid PVC Red 4 Litre	Code: 9104	\$28.68
Solvent Cement 500ml Clear Type N Brush	Code: 9628	\$7.98
Solvent Cement 500ml Clear Type N Roller	Code: 9596	\$7.98
Solvent Cement 500ml Blue Type N Brush	Code: 9918	\$6.94
Solvent Cement 500ml Blue Type N Roller	Code: 9595	\$6.94
Solvent Cement 500ml Pressure Clear Roller	Code: 1512	\$17.51
Solvent Cement 500ml Pressure Green Roller	Code: 1514	\$17.34
Solvent Cement 4 Litre Clear Type N	Code: 9212	\$38.89
Solvent Cement 4 Litre Blue Type N	Code: 9919	\$34.38

All pricing Includes GST



BOX PRICING AVAILABLE

Plumbers' Bedding Compound

For a professional finish



\$20⁸⁵ INC. GST
Code: 1846

- Easier clean up than silicone
- Temperature range: -10°C to +100°C
- Remains flexible



Made in Germany

Applications: Plug Sink Toilet



Wax Pan Seal

Repair leaky toilets without removing the pan

- Moulded to shape and ready to use
- Remains flexible
- Suitable for "S" or "P" trap pans

\$23⁰³ INC. GST
Code: 1882

CHS CHRIS HUNTER SALES

SPILL SAFE



STOP THE SLOP



1

Tip entire contents into pan



2

Allow to set

3 Remove pan

- Turn the pan water to GEL
- No more water spills to clean up

\$7⁰⁷ INC. GST
Code: 2509



RED BACK





RED BACK SILICONE CLEAN UP

Wipes silicone clean away!



- Specially designed for removing uncured silicone from laminates, porcelain, steel roofing & gutters

• \$22.53
INC. GST
Code: 9997

500ml



TRUSTED PRODUCT
FOR OVER 20 YEARS

AQUARIUS
DISTRIBUTION

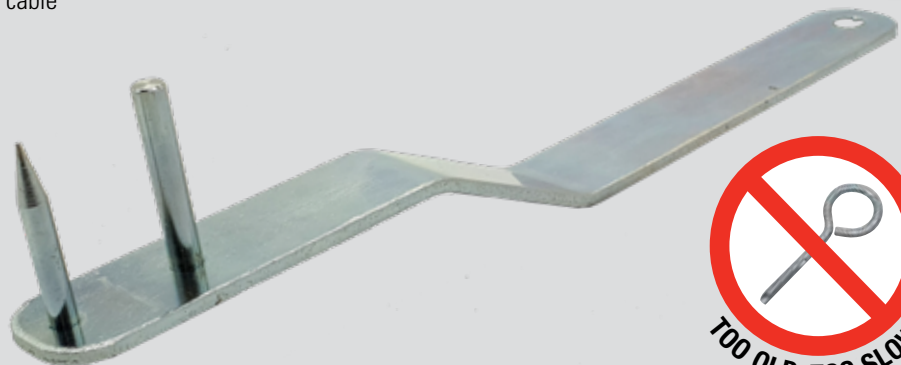
SEWER CABLE KEY

NEW

- Easily remove stubborn cables and cutting heads
- Suits Ridgid and Rothenburger 32mm cable
- Not easily lost

CODE: 3010

\$36.21
INC. GST



Compress button



Kick cable sideways

RIDGID SEWER MACHINE

MACHINE ONLY
K1500B

- Easy to handle

CODE: 1646

\$3300.00
INC. GST

LIMITED NUMBER
DON'T MISS OUT!



TEST PLUGS

Available at
Plumbers Choice

WE
STOCK THE
LARGEST
RANGE



CODE	NYLON - DESCRIPTION	PRICE
7263	Test Plug Nylon 40mm	\$20.21
7262	Test Plug Nylon 50mm	\$24.11
7271	Test Plug Nylon 65mm	\$31.24
7270	Test Plug Nylon 75mm	\$32.34
7260	Test Plug Nylon 100mm	\$25.04
7265	Test Plug Nylon 150mm	\$42.44

CODE	DESCRIPTION	PRICE
9003	Inflatable Test Plug 100mm - 150mm	\$176.00

CODE	ALUMINIUM - DESCRIPTION	PRICE
1524	Testing Plug Aluminium 40mm	\$39.35
1356	Testing Plug Aluminium 50mm	\$36.64
2289	Testing Plug Aluminium 65mm	\$42.47
9193	Testing Plug Aluminium 75mm	\$56.63
2283	Testing Plug Aluminium 150mm	\$69.93
8765	Plumtest Test Plug Aluminium 90mm	\$60.54
2149	Plumtest Test Plug Aluminium 100mm	\$49.47
7268	Test Plug Aluminium 200mm	\$105.26
7269	Test Plug Aluminium 255mm	\$144.42
7267	Test Plug Aluminium 300mm	\$194.45
7274	Test Plug Aluminium 450mm	\$639.91
7273	Test Plug Aluminium 600mm	\$1,216.68
2004	Plumtest Testing Plug Right Angled With Handles 100mm	\$143.37

Pex Clips

NYLON ANCHOR MASONRY NAIL

For 16-20mm Pex Pipe

\$33.31
INC. GST
Code: 7896

BAG
100



With Nylon Anchor

ALL IN
ONE CLIP
& PLUG



BAG
QTY 100



DUALPEX
TWISTED NAIL

16mm to 20mm
Code: 7895 **\$32.30**



DUALPEX
MASONRY NAIL

16mm to 20mm
Code: 5559 **\$28.80**



Pex Saddles
TWISTED NAIL

16mm Code: 4530 **\$25.87**



Pex Saddles
MASONRY NAIL

16mm Code: 9054 **\$24.49**



Pex Saddles
TWISTED NAIL

20mm Code: 4531 **\$27.83**



Pex Saddles
MASONRY NAIL

20mm Code: 9055 **\$26.02**

PRICES INC. GST

MAXISTOP

MAXIMUM POSSIBILITIES

Pressure Limiting & Isolation Valves

STOP TAP
1/2 Turn 15mm

\$66⁰⁰
INC. GST
Code: 6580



STOP TAP
DISHWASHER
1/2 Turn 20mm

\$71⁵⁰
INC. GST
Code: 6581

FEATURES

- 1/4 turn ON/OFF operation
- Firm all positional 360° swivel outlet
- PLV set at 350 kPa
- No need for thread seal tape/sealant
- Quick & easy installation with a soft seal inlet connection



NOW AVAILABLE AT:
plumbers
choice TRADE ONLY

STOP TAP LOOSE NUT TRI VALVE

NEW

- Loose nut for ease of installation
- Ceramic Disc
- Unique rubber cone makes installation quick and simple
- Connect tap and dishwasher with single fitting
- Ideal for confined spaces
- Confirms AS3718

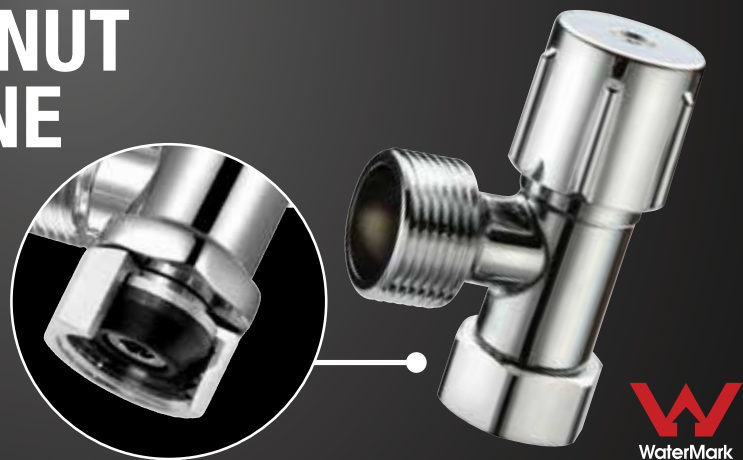
CODE: 6251



STOP TAP LOOSE NUT WASHING MACHINE

- Loose nut for ease of installation
- Ceramic Disc
- Unique rubber cone makes installation quick and simple
- Ideal for confined spaces
- Confirms AS3718

CODE: 6590



STOP TAP LOOSE NUT

- Loose nut for ease of installation
- Ceramic Disc
- Unique rubber cone makes installation quick and simple
- Ideal for confined spaces
- Confirms AS3718

CODE: 6587



SPECIAL

PRESS FITTINGS

PRESS WATER COUPLING



\$2.20
INC. GST

15mm Code: 8601

\$3.52
INC. GST

20mm Code: 8602

PRESS WATER ELBOW F/F 90°



\$2.53
INC. GST

15mm Code: 8607

\$4.29
INC. GST

20mm Code: 8608

PRESS WATER TEE



\$3.96
INC. GST

15mm Code: 8617

\$7.37
INC. GST

20mm Code: 8618

PRESS WATER ADAPTOR



15MI

\$3.85
INC. GST

15mm Code: 8633

20MI

\$7.26
INC. GST

20mm Code: 8634

ONLY

\$11.00
INC. GST EACH

PRESS WATER ELBOW LUGGED

90mm
15mm x 15MI
Code: 8628



Valid until April 30th 2020

PRESS FITTINGS COPPER & BRASS

all prices include GST

PRESS GAS FITTINGS



PRESS GAS COUPLING

CODE	SIZE	PRICE
8639	15mm	\$5.86
8640	20mm	\$7.52
8641	25mm	\$12.87



PRESS GAS SLIP REPAIR COUPLING

CODE	SIZE	PRICE
8642	15mm	\$5.62
8643	20mm	\$7.06
8644	25mm	\$10.95



PRESS GAS ELBOW F/F 90°

CODE	SIZE	PRICE
8645	15mm x 90	\$6.96
8646	20mm x 90	\$9.10
8647	25mm x 90	\$16.72



PRESS GAS ELBOW F/F 45°

CODE	SIZE	PRICE
8648	20mm x 45	\$10.86
8649	25mm x 45	\$14.47



PRESS GAS REDUCING COUPLING F/F

CODE	SIZE	PRICE
8650	20mm x 15mm	\$10.40
8651	25mm x 20mm	\$12.82



PRESS GAS REDUCER M/F

CODE	SIZE	PRICE
8652	20mm x 15mm	\$9.09
8653	25mm x 20mm	\$12.28



PRESS GAS TEE

CODE	SIZE	PRICE
8654	15mm	\$8.04
8655	20mm	\$13.86
8656	25mm	\$21.67



PRESS GAS TEE REDUCING

CODE	SIZE	PRICE
8657	20 x 20 x 15	\$14.31
8658	25 x 25 x 15	\$22.02
8659	25 x 25 x 20	\$24.34



PRESS GAS END CAP

CODE	SIZE	PRICE
8660	15mm	\$7.58
8661	20mm	\$8.54
8662	25mm	\$15.05



PRESS GAS ELBOW LUGGED

CODE	SIZE	PRICE
8663	15mm x 15FI	\$17.23
8664	20mm x 20FI	\$18.83



PRESS GAS ELBOW LUGGED (90MM)

CODE	SIZE	PRICE
8665	15mm x 15FM	\$17.82



PRESS GAS ADAPTOR MI

CODE	SIZE	PRICE
8666	15mm x 15MI	\$5.16
8667	20mm x 20MI	\$12.72
8668	25mm x 25MI	\$20.03



PRESS GAS ADAPTOR FI

CODE	SIZE	PRICE
8669	15mm x 15FI	\$6.96
8670	20mm x 20FI	\$10.60
8671	25mm x 25FI	\$14.45

25 YEAR WARRANTY*

* AusPress Copper press fittings are guaranteed for twenty five (25) years when;
- installed with WaterMark approved copper tube compliant with AS1432 and, - the installer observes our recommended installation procedures as detailed in our product and technical information (available on our website) and, - the product is fit-for-purpose in conjunction with the intended application.

PRESS WATER FITTINGS



SPECIAL

PRESS WATER COUPLING

CODE	SIZE	PRICE
8601	15mm	\$2.20
8602	20mm	\$3.52
8603	25mm	\$8.15



PRESS WATER SLIP REPAIR COUPLING

CODE	SIZE	PRICE
8604	15mm	\$4.39
8605	20mm	\$6.51
8606	25mm	\$9.85



SPECIAL

PRESS WATER ELBOW F/F 90°

CODE	SIZE	PRICE
8607	15mm x 90	\$2.53
8608	20mm x 90	\$4.29
8609	25mm x 90	\$12.39



PRESS WATER ELBOW F/F 45°

CODE	SIZE	PRICE
8610	15mm x 45	\$5.48
8611	20mm x 45	\$7.56
8612	25mm x 45	\$13.92



PRESS WATER ELBOW M/F 90°

CODE	SIZE	PRICE
8681	15mm	\$5.06
8682	20mm	\$6.66



PRESS WATER REDUCING COUPLING F/F

CODE	SIZE	PRICE
8613	20mm x 15mm	\$8.78
8614	25mm x 20mm	\$14.97



PRESS WATER REDUCER M/F

CODE	SIZE	PRICE
8615	20mm x 15mm	\$7.87
8616	25mm x 20mm	\$11.18



SPECIAL

PRESS WATER TEE

CODE	SIZE	PRICE
8617	15mm	\$3.96
8618	20mm	\$7.37
8619	25mm	\$18.92



PRESS WATER TEE REDUCING

CODE	SIZE	PRICE
8620	20 x 20 x 15	\$12.65
8621	25 x 25 x 15	\$17.90
8622	25 x 25 x 20	\$21.49



PRESS WATER END CAP

CODE	SIZE	PRICE
8623	15mm	\$6.95
8624	20mm	\$8.43
8625	25mm	\$16.51



PRESS WATER ELBOW LUGGED

CODE	SIZE	PRICE
8626	15mm x 15FI	\$12.50
8627	20mm x 20FI	\$17.83



PRESS WATER ELBOW LUGGED (90MM)

CODE	SIZE	PRICE
8628	15mm x 15MI	\$11.00

SPECIAL



PRESS WATER ELBOW FI

CODE	SIZE	PRICE
8629	15mm x 15FI	\$13.82
8630	20mm x 20FI	\$16.74



PRESS WATER ELBOW MI

CODE	SIZE	PRICE
8631	15mm x 15MI	\$13.32
8632	20mm x 20MI	\$16.75



SPECIAL

PRESS WATER ADAPTOR

CODE	SIZE	PRICE
8633	15mm x 15MI	\$3.85
8634	20mm x 20MI	\$7.26
8635	25mm x 25MI	\$19.21



PRESS WATER ADAPTOR

CODE	SIZE	PRICE
8636	15mm x 15FI	\$6.17
8637	20mm x 20FI	\$7.87
8638	25mm x 25FI	\$14.03



PRESS UNION

CODE	SIZE	PRICE
8679	20mm Loose Nut x 20mm Press	\$10.99

- Flame-free
- Permanent V-Profile press join
- All fittings comply with Australian Standards AS3688



PRESS BALL VALVES

25
YEAR
WARRANTY

all prices include GST

WATER

\$20.90
INC. GST

Code: 8590

PRESS BALL VALVE WATER 15MM SOCKET X SOCKET

- Stainless steel handle and nut
- 25 year warranty*
- Permanent V-Profile press join, Flame free
- Complies with Australian Standards AS3688



\$26.40
INC. GST

Code: 8591

PRESS BALL VALVE WATER 20MM SOCKET X SOCKET

- Stainless steel handle and nut
- 25 year warranty*
- Permanent V-Profile press join, Flame free
- Complies with Australian Standards AS3688



\$20.90
INC. GST

Code: 8592

PRESS BALL VALVE WATER 15MM FI X SOCKET

- Stainless steel handle and nut
- 25 year warranty*
- Permanent V-Profile press join, Flame free
- Complies with Australian Standards AS3688



\$26.40
INC. GST

Code: 8593

PRESS BALL VALVE WATER 20MM FI X SOCKET

- Stainless steel handle and nut
- 25 year warranty*
- Permanent V-Profile press join, Flame free
- Complies with Australian Standards AS3688



\$21.45
INC. GST

Code: 8594

PRESS BALL VALVE GAS 15MM SOCKET X SOCKET

- Stainless steel handle and nut
- 25 year warranty*
- Permanent V-Profile press join, Flame free
- Complies with Australian Standards AS3688
- AGA 6132 approved



\$27.23
INC. GST

Code: 8595

PRESS BALL VALVE GAS 20MM SOCKET X SOCKET

- Stainless steel handle and nut
- 25 year warranty*
- Permanent V-Profile press join, Flame free
- Complies with Australian Standards AS3688
- AGA 6132 approved



\$21.45
INC. GST

Code: 8596

PRESS BALL VALVE GAS 15MM FI X SOCKET

- Stainless steel handle and nut
- 25 year warranty*
- Permanent V-Profile press join, Flame free
- Complies with Australian Standards AS3688
- AGA 6132 approved



\$27.23
INC. GST

Code: 8597

PRESS BALL VALVE GAS 20MM FI X SOCKET

- Stainless steel handle and nut
- 25 year warranty*
- Permanent V-Profile press join, Flame free
- Complies with Australian Standards AS3688
- AGA 6132 approved



GAS

White
Stand Off
brackets
**NOW
AVAILABLE**

WHITE

For a neat professional finish to blend in with pipework. Ensure you're using all white.

CLIP HEAD PVC

- Size 90mm
- Code 1362

\$1.65 INC. GST

- Size 100mm
- Code 1363

\$1.52 INC. GST



STAND OFF BRACKET

- Code 1568

\$2.15 INC. GST



SADDLE TO SUIT DWV PIPE FLUSH

- Size 90mm
- Code 1407

\$1.56 INC. GST

- Size 100mm
- Code 1408

\$2.26 INC. GST



STAND OFF BRACKET ADJUSTABLE

- Code 1823

\$3.14 INC. GST



DESIGNED
FOR THE
GREAT
OUTDOORS

STAINLESS STEEL

Made from **304 Grade Stainless Steel**. They are tough enough for any external application.

CLIP HEAD PVC

- Size 90mm
- Code 7253

\$5.60 INC. GST

- Size 100mm
- Code 7252

\$6.12 INC. GST



STAND OFF BRACKET

- Code 7250

\$6.19 INC. GST



SADDLE TO SUIT DWV PIPE FLUSH

- Size 90mm
- Code 7254

\$5.28 INC. GST

- Size 100mm
- Code 7255

\$5.78 INC. GST



STAND OFF BRACKET ADJUSTABLE

- Code 7251

\$9.91 INC. GST



ADHESIVE COVER PLATES

**STRONG
ABS
PLASTIC**



100mm

**40mm
PVC Pipe
Adhesive
Round**

Pack Qty 10
Code 1198
\$20.22 INC. GST

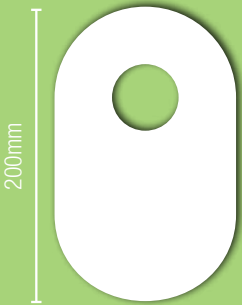
**NOW
available in
ROUND**



100mm

**50mm
PVC Pipe
Adhesive
Round**

Pack Qty 10
Code 1197
\$20.22 INC. GST

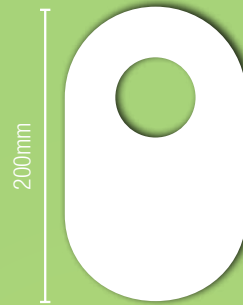


200mm

100mm

**40mm
PVC Pipe
Adhesive
Oval**

Pack Qty 10
Code 1196 | \$32.76 INC. GST

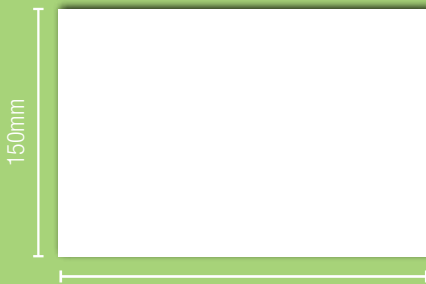


200mm

100mm

**50mm
PVC Pipe
Adhesive
Oval**

Pack Qty 10
Code 1195 | \$32.76 INC. GST



150mm

240mm

Adhesive Patch

Pack Qty 1
Code 1199 | \$5.83 INC. GST



**Adhesive back
for quick & easy installation**

- White to match inside of cupboard
- Great for covering drilling errors

COMPLETE
COVER PLATES

BLACK COVER PLATES

Powder coated black metal. Professional architectural finish.



Flat

1/2 Inch BSP Flat

Pack Qty 1 | Code 4018 | \$12.40ea



Flat 40mm

40mm PVC Flat

Pack Qty 1 | Code 4019 | \$20.09ea



Square Flat

1/2 Inch BSP Flat

Pack Qty 1 | Code 4025 | \$18.90ea



10mm Rise

1/2 Inch BSP 10mm Rise

Pack Qty 1 | Code 4015 | \$13.08ea



Flat 50mm

50mm PVC Flat

Pack Qty 1 | Code 4020 | \$20.09ea



Square Rise

1/2 Inch BSP 10mm Rise

Pack Qty 1 | Code 4026 | \$18.90ea

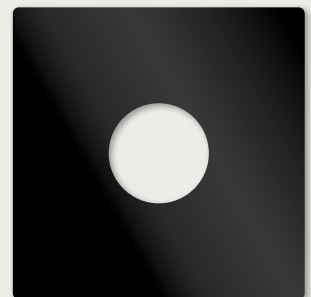


Black
**TILER'S
BOO BOO**



90mm Round

Pack Qty 1 | Code 6173



90mm Square

Pack Qty 1 | Code 6172




NEW

- For a professional finish inside the cupboard.
- Flexy Flange cupboard plate fits tight to pipe which makes it ant-proof.

1 Flexy Flange Fits 4 Sizes!

80mm



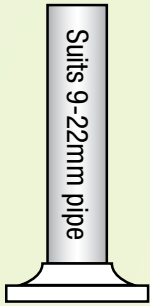
Suits 9-22mm pipe

Small


Pack Qty 10

\$21.20 INC. GST

Code: 8250




90mm



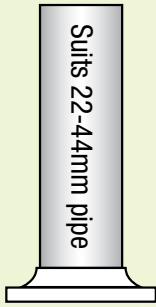
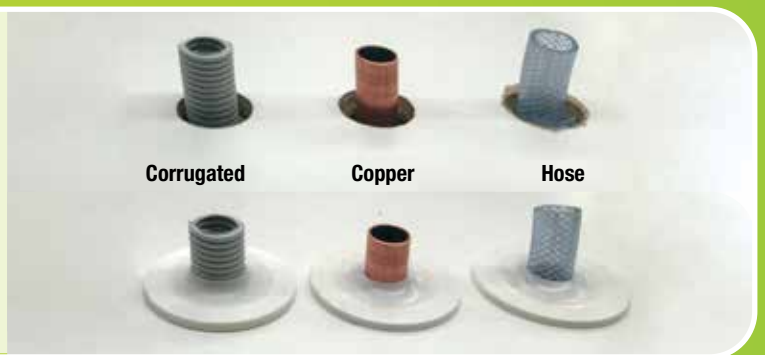
Suits 22-44mm pipe

Medium


Pack Qty 5

\$14.07 INC. GST

Code: 8252

105mm



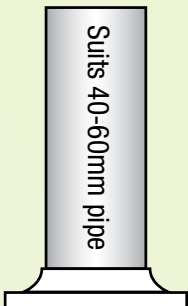
Suits 40-60mm pipe

Large

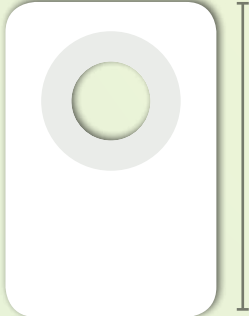
Pack Qty 5

\$15.68 INC. GST

Code: 9968




115mm



170mm

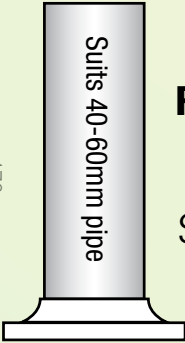
Suits 40-60mm pipe

Rectangle

Pack Qty 5

\$20.85 INC. GST

Code: 2202




CARBON MONOXIDE ANALYSER

Code: 8020



- Suitable for testing as per VBA Carbon Monoxide Safety Program
- Measures carbon monoxide in ambient applications as well as high heat flue situations.
- Measures 0 ~ 10,000 ppm CO
- Save and recall readings with time and date stamp
- Pump driven
- 1 PPM sensitivity
- Infrared port for use with optional A740 IR printer

FREE SMOKE PEN WITH ANALYSER
Valid until 30th April 2020

Smoke Pen



SMOKE PEN

\$78⁴⁷ INC. GST
Code: 9837



- Specified for carbon monoxide testing
- Ideal for testing the slightest air movement & gas spillage
- HVAC air movement or leakage checks
- Comes with 6 smoke wicks
- Refill packs of wicks available
- Non-toxic

As seen on VBA Training video www.vba.vic.gov.au/carbon-monoxide-safety-program





TAP



WALL SINK SET

Code: 3703 \$84.84 (INC. GST)



HOB SINK SET

Code: 3706 \$93.50 (INC. GST)



BASIN SET

Code: 3700 \$79.49 (INC. GST)
Code: 3699 Ceramic Disc \$121.00 (INC. GST)



BATH SET

Code: 3701 \$49.90 (INC. GST)



BASIN TOP ASSEMBLIES

Code: 3707 \$35.15 (INC. GST)
Code: 3712 Ceramic Disc \$66.28 (INC. GST)



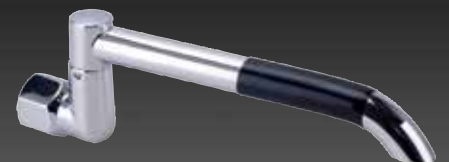
SWIVEL SPOUT WALL TUBE C/P 180mm

Code: 7095 \$18.91 (INC. GST)



SWIVEL SPOUT HOB TUBE C/P 180mm

Code: 7096 \$18.52 (INC. GST)



LAUNDRY ARM SWIVEL C/P 150mm

Code: 3711 \$10.84 (INC. GST)

WARE

CHROME PLATED FINISH



TOP ASSEMBLIES RECESSED 15mm

Code: 7500 \$14.76 (INC. GST)



BOOSTER HANDLES & BUTTONS

Code: HD09 \$5.34 (INC. GST)



WALL TOP ASSEMBLIES

Code: 3704 \$35.15 (INC. GST)

Code: 3710 Ceramic Disc \$66.28 (INC. GST)



WASHING MACHINE SET

Code: 3705 \$42.64 (INC. GST)



WASHING MACHINE CONVERSION UNIT UNIVERSAL

Code: WMC \$163.43 (INC. GST)



SHOWER SET

Code: 3702 \$54.89 (INC. GST)



SHOWER ROSE UNIVERSAL ALL DIRECTIONAL

Code: SH02 \$18.89 (INC. GST)

Code: SH02SW Loose Nut \$21.60 (INC. GST)

Join Now!

Buy.Swap.Sell



- For the plumbers
- Find subbies and employees
- Sell your apprentice for cash!
- Get on and grab a bargain
- Get rid of your unwanted plumbing stuff
- Find work
- Closed group
- Trade Only



NOW ON
Instagram

@plumberschoicetradeonly

TIP OF THE MONTH



We'll tip
YOU
when you tip
US!



Every featured story receives a
\$200 Store Credit

REMOVING CORRODED FLANGES



Ever had trouble removing a bath outlet?
Nick Dolan has the answer. Screw in 4 self drilling button head screws. This allows your multi grips something to grab onto. Genius!

Nick Dolan -

Thanks mate, we'll be sending you \$200 store credit

To get involved send us an email info@plumberschoice.com.au

50K
FOLLOWERS

Join the **TRADE ONLY** Conversation on **facebook**

Plumbers Choice
5 September

HOW TO ENGAGE THE SERVICES OF A PLUMBER

Call the plumber after lunch on Friday or before a public holiday weekend. Hassle him to fit you in.

Estimate the time and ease of job. (They like that) explain that it is a five minute job that you could do yourself if "only you had the time."

Negotiate the smallest most inconvenient window of booking opportunity. (I have to go to the gym or some other more important engagement than your blocked shitter, will smooth this over.

Ask for a fixed price. (Even of its a burst pipe or blocked drain) When the plumber refuses to be nailed down, some jovial comment like "I should have been a plumber" will keep the negotiation nice and light.

Tell him that you will run it by your wife and call back in five.

Call ten other plumbers and then phone back. If he answers the phone again and arrives be sure to be in the shower or on the way home.

Show him the job which does not vaguely resemble what you described.

Ask him to move his truck. Someone needs to get their car out and it clearly cant wait the "five minutes".

Show him where the problem is. Explain how you cant find the key to the side gate and he will have to lug his equipment around.

Now is probably a good time to point out that the problem appeared on Monday. Embark on a long winded story involving names of people he could not give a toss about, and every completely unrelated event leading to this moment in time.

Share your half cocked theory on what is going on. ("Air in the pipes" perhaps?)

Apologise for the 20 years of piss-cheese build up on around your toilet where he will be working. Explain how it is someone else's fault. It will make it more palatable.

Tell them one of your close relatives was a plumber. (He will be extremely interested and it will create a sense of kinship between you)

Explain that you would be quite capable of doing the job and that you have done heaps of plumbing in the past. (He will love to hear that his knowledge, skills and necessary equipment amount to being a glorified handyman.

Credit to Irishpwr46

859 comments 68 shares

Plumbers Choice
7 January

KNOWLEDGE THAT MUST BE MEMORIZED TO BE A MASTER



PLUMBER SPARKY

332 comments 189 shares

Plumbers Choice
9 January

HOW TRADES USE THE URINAL



PLUMBERS

CHIPPIES

SPARKIES

www.plumberschoice.com.au
AUSTRALIA'S FIRST PLUMBERS ONLY SUPPLIER

611 1.5K comments 321 shares

Plumbers Choice
16 January



Does he work hard?

Yes



www.plumberschoice.com.au
AUSTRALIA'S FIRST PLUMBERS ONLY SUPPLIER

347 937 comments 172 shares



Jacko's Review

Spindle Access Drill

Cuts tiles to allow access to tap body



SPECIAL
\$128.33 INC. GST
Code: 1916
SAVE \$70

Really handy tool. Got us out of some trouble when we had to fix a handy man's rough in job where he also tiled over existing tiles!

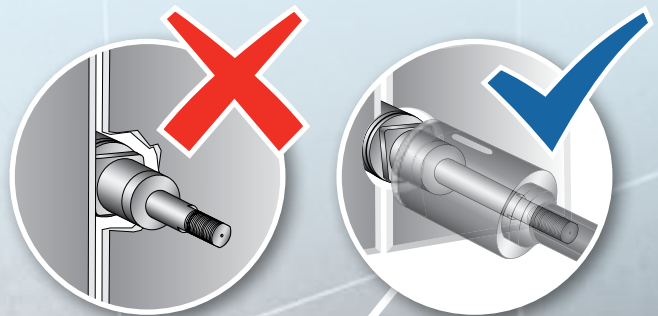
Declan from Declan Smith Plumbing

Quality tool, use it regularly. Great and easy to use.

John from Icon Plumbing & Gas Fitting

Great tool. Does exactly what it is supposed to do. Cuts tiles, tube spanner goes in to get spindles out. Easy!

Dave from Dave The Plumber



plumtool™

EXTENDO

GAS CONNECTOR

F + F NOW AVAILABLE



BROMIC
PLUMBING & GAS

Extendable
from **650mm**
to **1200mm**

- ✓ Saves Space, **ONE Connector does it all!**
- ✓ 12mm internal bore for better gas flow
- ✓ Flame resistant stainless steel
- ✓ AGA Approved 8633G
- ✓ 1/2" M+F
- ✓ 1/2" F+F

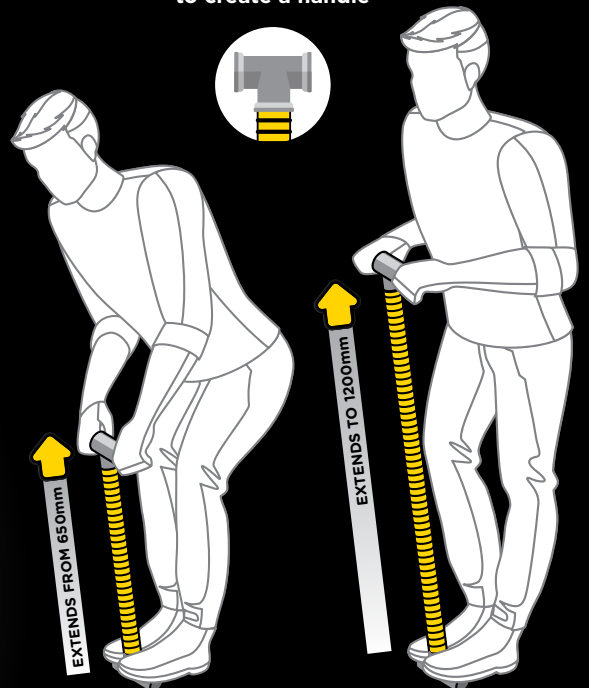


BOX
10

\$231.00
INC. GST

M+F Code: 6176
F+F Code: 6178

HANDY TIP:
Attach a brass tee to either end
to create a handle



MONACO™

Universal Cistern with Link and Seat

1000A-002

Bulk Pricing Available

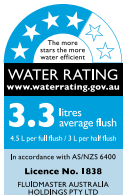
Code: 2090

DESIGNED BY
**Australian
Plumbers**



Upgrade to the Brand Trusted by Professionals and Toilet Manufacturers Worldwide

- Extra Easy Install Features Built-in
- 4.5/3L Dual Flush Technology
- Simple Flush Volume Conversion to 6/3L or 9/4.5L
- UV Resistant - Certified
- Plastic Cistern with Bottom Inlet
- Saves Water



10
YEAR WARRANTY

EQUIPPED WITH FLUIDMASTER TECHNOLOGY



**Inlet Valve
400UK063**



**Outlet Valve
560AU02**



- Independently Tested & Proven - Best Flush System
- Simple Flush Volume Conversion to 6/3L or 9/4.5L
- No Height or Water Level Adjustments Needed