

plumbers choice **TRADE ONLY**

One Giant Leap for Trade Only



489 Mountain Highway, Bayswater, VIC 3153

Email: info@plumberschoice.com.au Ph: (03) 9720 8274 Fax: (03) 9720 0146

www.plumberschoice.com.au





Luke's Editorial

You always remember your first

Who was the first the first man to set foot on the moon?

An easy question to answer.

Who was the second?

Maybe some people know.

No one remembers who the third person was to set foot on the moon. Clearly it is more memorable to be the first.

At Plumbers Choice we are incredibly proud to be the first Trade Only plumbing supplier in Australia. We thank Australian plumbers for the support we continue to receive. It is this support that will change our industry for the better.

LUKE BOLTON - DIRECTOR, PLUMBERS CHOICE



2nd Buzz Aldrin & 3rd Pete Conrad

HOW TO ORDER



Online - 24 hours
www.plumberschoice.com.au



Email - 24 hours
sales@plumberschoice.com.au



Fax - 24 hours
(03) 9720 0146
Use our handy Order Form.



Phone - Business Hours
(03) 9720 8274
Our knowledgeable staff will take your order.



At our Show Room
Mon - Fri 7:30am - 5pm
489 Mountain Highway, Bayswater, Victoria 3153



Personal Sales Rep
Your personal Sales Representative is able to tailor our service to suit your needs.



Have you checked out our **NEW** website?

SPECIAL

PRESS LUGGED ELBOWS

ONLY
\$11.00 EACH
INC GST

**PRESS ELBOW
LUGGED
(90MM)**
15mm x 15FM



CODE: 8628

ONLY
\$8.80 EACH
INC GST

**PRESS ELBOW
LUGGED**
15mm x 15FI



CODE: 8626

ONLY
\$11.00 EACH
INC GST

**PRESS ELBOW
LUGGED**
20mm x 20FI



CODE: 8627

**W
A
T
E
R**

**G
A
S**



CODE: 8665



CODE: 8663



CODE: 8664

Valid until October 31st 2019



GROUND MARKING

spray

BUY A
BOX OF
12
& SAVE

\$77.00
INC. GST

BOX OF 12



Valid until 31/10/2019

Yellow Code: 3005

Black Code: 3007

Orange Code: 3006

Fluoro Pink Code: 3002

Blue Code: 3001

Red Code: 3003

White Code: 3004

ALL 350g

NOW STOCKING!

**BOND
COVER**
TOUCH UP PAINT

Features & Benefits:

- Durable formulation for exterior use
- Matches Colorbond® satin finish
- Maintenance & repair of fences, gutters, fascia & more
- Available in an extensive range of 22 colours
- Quick dry





Jacko's Review

EVER HAD TROUBLE LIFTING A GATIC LID?

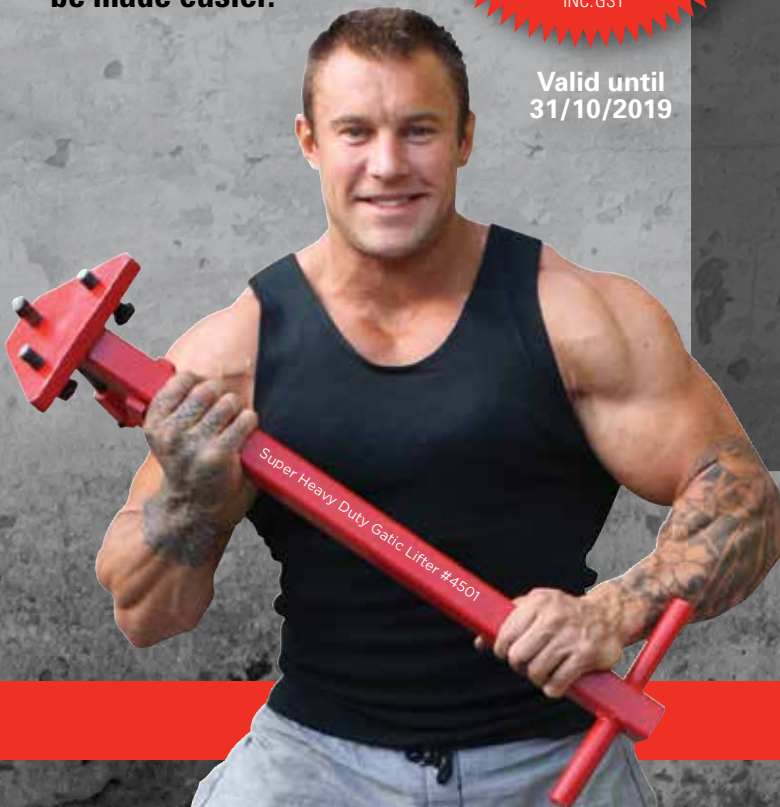
Lifting a Gatic cover that has been in place for years can be a real problem. Armed with the right tools and some "know how" the job can be made easier.

BUILT TO LAST A LIFETIME

3 PACK ONLY \$275

INC. GST

Valid until 31/10/2019



GATIC WEDGE

- Designed with a slim taper to be driven into the gaps around the edge of the lid

CODE: 7385



HEAVY DUTY D HANDLE GATIC LIFTER

- Comes with two high tensile lifting bolts
- The bottom plate is made from 20mm steel

CODE: 9870



SUPER HEAVY DUTY GATIC LIFTER

- Comes with two high tensile lifting bolts to help crack the seal on gatic lids

CODE: 4501



plumtool™

Mixers

Sink, Basin & Shower Mixer Taps

All mixers comply with Australian standards



BRASSHARDS
QUALITY PLUMBING PRODUCTS



\$8300
INC. GST

▲ BASIN MIXER FIXED

- Rated to 1500kPa
- Supplied with Pex Tails and Metal Bolt

120mm Code: 2866



\$8300
INC. GST

▲ BASIN MIXER SWIVEL

- Rated to 1500kPa
- Supplied with Pex Tails, Easy Fix and Metal Bolt

120mm Code: 2835



\$8300
INC. GST

▲ SINK MIXER SWIVEL

- Rated to 1500kPa
- Supplied with Pex Tails, Easy Fix and Metal Bolt

225mm Code: 2830



BOX
10

**BOX PRICING
AVAILABLE**



▶ Loose Nut Extensions

\$660
INC. GST

- Washer seal – no need for thread tape
- No adjustment required – line up the product in the required position and then tighten nut
- Multi purpose M/F extensions suitable for many applications

Code: 6582

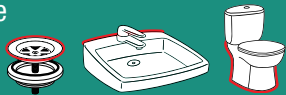
Plumbers' Bedding Compound

For a professional finish



\$20⁸⁵ INC. GST
Code: 1846

- Easier clean up than silicone
- Temperature range: -10°C to +100°C
- Remains flexible



Applications: Plug Sink Toilet

Made in Germany



Wax Pan Seal

Repair leaky toilets without removing the pan

- Moulded to shape and ready to use
- Remains flexible
- Suitable for "S" or "P" trap pans

\$23⁰³ INC. GST
Code: 1882

CHS CHRIS HUNTER SALES

SPILL SAFE

STOP THE SLOP



1

Tip entire contents into pan



2

Allow to set

3 Remove pan

- Turn the pan water to GEL
- No more water spills to clean up

\$7⁰⁷ INC. GST
Code: 2509



RED BACK



**6X
FASTER THAN
ROLLERS &
BRUSHES**

plumtool

Solvent Mates

A better alternative for
applying Priming Fluids
& Solvent Cements

- For use in joining PVC pipes & fittings
- Reduces contact with harsh chemicals
- Avoids mess

\$62⁴¹
INC. GST
Code: 5609



Glutote

Knocking over your
glue pot can be very
expensive

**STORES
500ml GLUE
& PRIMER**

\$49⁵¹
INC. GST
Code: 1695

- Also stores Solvent Mate Applicator pair
- Great for hooking onto ladders!
- Spike can be pushed into ground to prevent spillage on uneven surfaces
- Solvent Mate Applicators not included

plumtool

Spike can be pushed into
ground to prevent spillage
on uneven surface.



PATENTED



Stick with quality glue you can trust

Priming Fluid PVC Clear 500ml Roller	Code: 9630	\$7.37
Priming Fluid PVC Red 500ml Roller	Code: 9920	\$6.66
Priming Fluid PVC Clear 4 Litre	Code: 1841	\$36.48
Priming Fluid PVC Red 4 Litre	Code: 9104	\$28.68
Solvent Cement 500ml Clear Type N Brush	Code: 9628	\$7.98
Solvent Cement 500ml Clear Type N Roller	Code: 9596	\$7.98
Solvent Cement 500ml Blue Type N Brush	Code: 9918	\$6.94
Solvent Cement 500ml Blue Type N Roller	Code: 9595	\$6.94
Solvent Cement 500ml Pressure Clear Roller	Code: 1512	\$17.51
Solvent Cement 500ml Pressure Green Roller	Code: 1514	\$17.34
Solvent Cement 4 Litre Clear Type N	Code: 9212	\$38.89
Solvent Cement 4 Litre Blue Type N	Code: 9919	\$34.38



BOX PRICING AVAILABLE

PEX FLEXIS

PEX LINED 100% BURST PROOF

PEX:
Extremely
High Density
Polyethylene
Inner Core



EZY FIT WATER CONNECTOR

- Burst Proof Inner Core
- 1/2"Female x 1/2"Female Connection
- Premium 8mm Straight Water Hose

225mm QTY 25 Code: 5100 **\$114.25**

300mm QTY 25 Code: 5101 **\$118.11**

450mm QTY 25 Code: 5102 **\$124.51**



EZY FIT WATER CONNECTOR M & F EXTENSIONS

- Burst Proof Inner Core
- 1/2"Male x 1/2"Female Connection
- Ideal for extending mixer tails that are too short

150mm QTY 20 Code: 5009 **\$123.93**

225mm QTY 20 Code: 9155 **\$149.81**



EZY FIT WATER CONNECTOR RIGHT ANGLE

- Burst Proof Inner Core
- 1/2" Female x 1/2" Female
- 90° Elbow

225mm QTY 25 Code: 5015 **\$197.45**

300mm QTY 25 Code: 5016 **\$200.19**

450mm QTY 25 Code: 5017 **\$211.70**



BROMIC
PLUMBING & GAS



BURST PROOF
10 YEAR WARRANTY

EXTENDO

GAS CONNECTOR

Extendable
from **650mm**
to **1200mm**



BROMIC
PLUMBING & GAS



- ✓ 1 Connector does it all!
- ✓ Stock just 1 connector to save space in van
- ✓ 12mm internal bore for better gas flow
- ✓ Flame resistant stainless steel
- ✓ AGA Approved 8633G
- ✓ 1/2" M+F

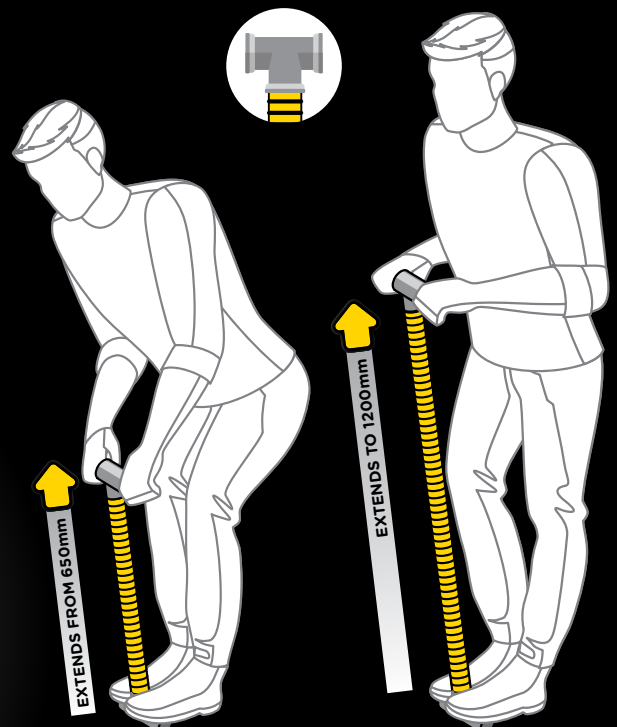
Code: 6175



\$231.00
INC. GST
Code: 6176

**BOX
10**

HANDY TIP:
Attach a brass tee to either end
to create a handle



STEEL STUDWORK? Plum



FASTANOG

- Adjustable length 330mm to 600mm
- Faster than timber noggins
- Compulsory in termite areas
- Set back measurer

PRELOADED WITH HEX SD SCREW

Code: 1471



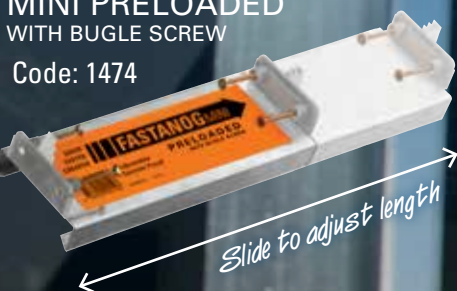
UNLOADED

Code: 1450



MINI PRELOADED WITH BUGLE SCREW

Code: 1474



DUALPEX CLIP SD SCREW

ONE CLIP FITS 16mm-20mm PEX PIPE

- Strong self-drilling screw included
- Clips onto the pipe and stays in position until screw is driven in
- Saves time sorting out clips
- Uses half the space in your nail bag
- Save money by only stocking one clip

Patented

\$31⁰⁶ INC. GST

Code: 5558

DUALPEX

DUALPEX CLIP SD SCREW WITH TAB

ONE CLIP FITS 16mm-20mm PEX PIPE

- Strong self-drilling screw included
- Clips onto the pipe and stays in position until screw is driven in
- Saves time sorting out clips
- Uses half the space in your nail bag
- Save money by only stocking one clip

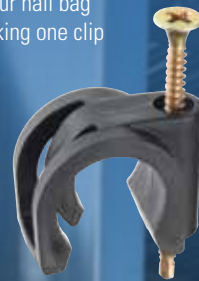
Patented

\$33³¹ INC. GST

Code: 5575

DUALPEX

BAG 100



BAG 100



STUD CLIP 100 WITH SD SCREW

- Works in any size hole
- Bag of 100

\$27²³ INC. GST

Code: 5571

STUD CLIP 200 WITH SD SCREW

- Works in any size hole
- Bag of 100

\$28⁹² INC. GST

Code: 5572

Plumbers Choice has the answers



3mm
W

BAG
100



3mm
W

BAG
100



STUD PUNCH

- For the plumber in a hurry!
- Designed for cutting holes in steel stud work
- Cuts holes super fast

\$561⁰⁴
INC. GST

Code: 1914



plumtool™

MULTI-FIT GROMMET

- Works in varying thicknesses of studwork (thickness 0.42mm to 2mm)
- Complies to Australian Standards AS3500.1 12 Clause 5.5 2.2 Part C

\$363⁷
INC. GST

Code: 9241



STEEL STUD DRILL 34MM & 58MM

- Also great in roofing work for overflows, etc
- 34mm to suit yellow grommets
- 58mm great for drainage vents

34mm

58mm

\$66⁰⁴
INC. GST

Code: 2000

\$142³⁶
INC. GST

Code: 2001



plumtool™



Fluidmaster®

TRADE ONLY INLET VALVES



PRO45
Code: 2099



PRO45B
Code: 2040

**HEAVY DUTY
BRASS
SHANK WILL
NOT CROSS
THREAD**

- Ultra-quiet
- Fast refill
- Reduces water hammer



www.fluidmaster.com.au

100 PIECE CISTERN WASHER KIT



\$135.⁹¹
INC. GST



**FAR MORE
COST EFFECTIVE
THAN CARDED
WASHERS**

CISTERN WASHER KIT

- Contains 12 types of the most common washers
- Never run out of cistern washers again
- Great value

Code: 6687

135 PIECE SINK REPAIR KIT



\$147.³¹
INC. GST



**RE-STOCK YOUR
KIT AND NEVER
RUN OUT OF SINK
WASHERS AGAIN!**

SINK REPAIR KIT

Code: 1795

DRAIN CUTTING TOOLS

ROOT WRECKER

- To suit 32mm Ridgid Cables
- Heavy spring screws into root mass while front hook tears into stoppage

Code: 8899

\$159.20
INC. GST



RIDGID

SHARKTOOTH BLADE

- To suit 32mm cable
- Blade only
- Genuine Ridgid product

75mm

Code: 9541

\$60.08
INC. GST

100mm

Code: 9428

\$60.73
INC. GST



RIDGID

STRAIGHT AUGER T1

- To suit 32mm cable
- Used for breaking up blockages or taking sample to surface
- Genuine Ridgid product

Code: 1050

\$98.74
INC. GST



RIDGID

T22 SPIRAL CUTTER

- To suit 32mm cable
- Used for clearing blockages
- Genuine Ridgid product

100mm

Code: 1054

\$132.53
INC. GST



DRAIN GRENADE

- To suit 32mm Ridgid Cables
- Excellent "first head" down the drain
- Compact and designed not to snag
- Self-sharpening

Code: 8892

\$159.50
INC. GST



RIDGID

SHARKTOOTH CUTTER

- To suit 32mm cable
- Used to clear pipe walls
- Genuine Ridgid product

75mm

Code: 1961

\$121.09
INC. GST

100mm

Code: 9464

\$126.45
INC. GST



RIDGID

GREASE CUTTER T8

- To suit 32mm cable
- Great for stormwater silt and roots
- Genuine Ridgid product

65mm

Code: 9404

\$100.75
INC. GST



RIDGID

SAWTOOTH HOLESAW

- To suit 32mm cable
- Design allows cutter to be removed from damaged pipe without locking
- Genuine Ridgid product

65mm

Code: 8924

\$176.46
INC. GST



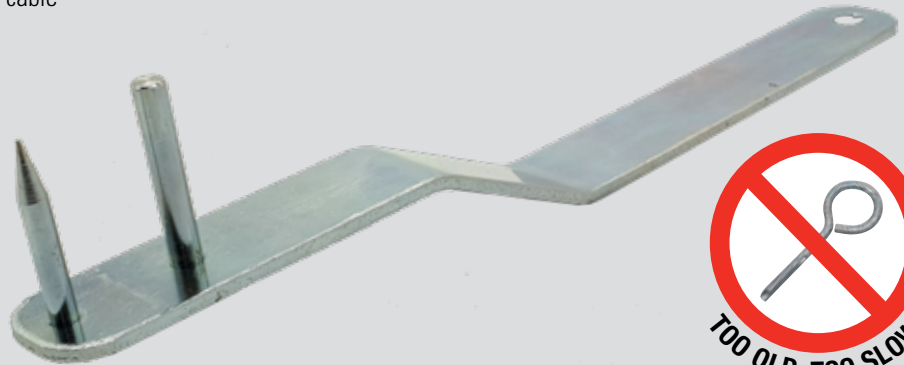
SEWER CABLE KEY

NEW

- Easily remove stubborn cables and cutting heads
- Suits Ridgid and Rothenburger 32mm cable
- Not easily lost

CODE: 3010

\$36.21
INC. GST



Compress button



Kick cable sideways

RIDGID SEWER MACHINE

MACHINE ONLY
K1500B

- Easy to handle

CODE: 1646

\$3085.67
INC. GST

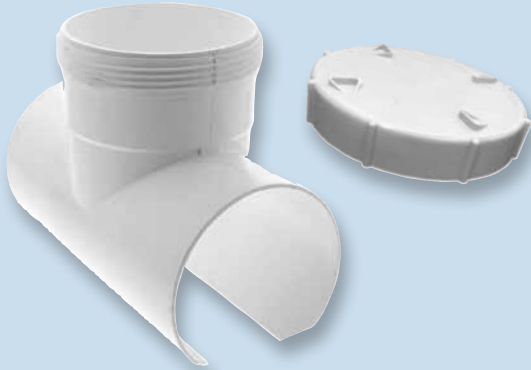
LIMITED NUMBER
DON'T MISS OUT!





PLASTEC
 INNOVATIVE PLUMBING SOLUTIONS
 Trusted Australian brand for over 25 years

Create your own
 access point



SNAP TEE

100mm WITH CAP | Code: 2635

- Easy to fit with minimal digging
- No Fernco required
- Comes with screw cap
- A must for drain blockages



1. Apply Priming Fluid



2. Apply Glue



3. Drill Pipe



4. Access Pipe



5. Screw on Cap... Job done!

Trusted Australian
 brand for over
 25 years



All PVC complies with
 AS/NZS1260



SAVE TIME & MONEY



Quick Cappz

WHITE

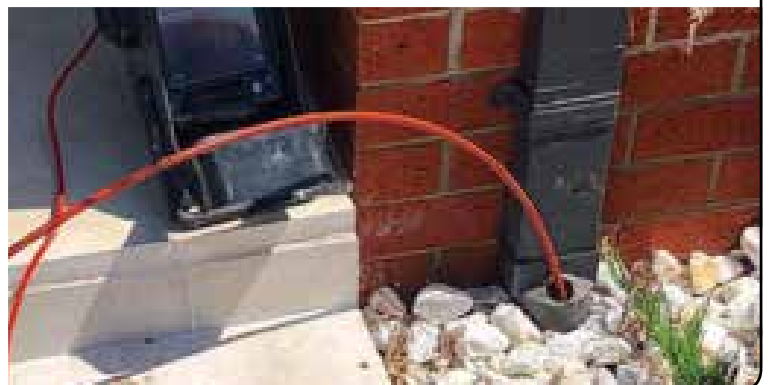
\$34.09 INC GST

Code: 4807

Per 50

CCTV drain entry for Plumbers.
 Makes inspecting below
 ground drainage systems via
 downpipes easy.

- Suits 35mm hole
- Ribbed outer to prevent leaks
- Flexible PVC to ensure a flush fit on any surface
- Can be used for round PVC downpipes
- UV stabilised
- Easily removed for re inspection when required

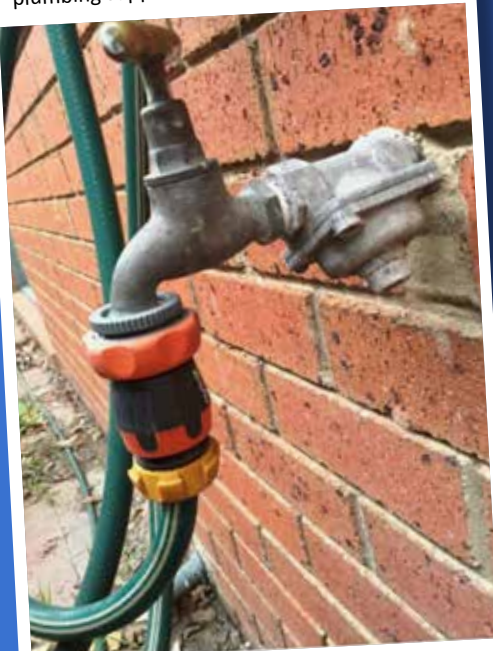


49K
FOLLOWERS

Join the ^{TRADE ONLY} Conversation on **facebook**

Plumbers Choice

A fine example of why we are a Trade Only plumbing supplier.



471 541 comments 46 shares

Plumbers Choice

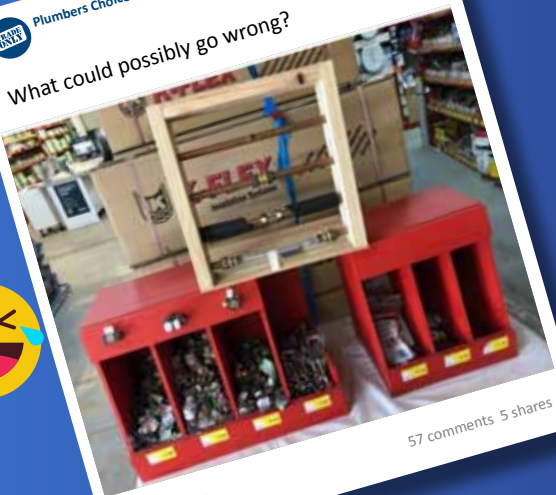
Should we stock these? Excellent when you only need to tighten your nuts hand tight. Courtesy Craig Lincoln.



101 54 comments 23 shares

Plumbers Choice

What could possibly go wrong?



104 57 comments 5 shares

Plumbers Choice
24 March

HOW TO CATCH AN APPRENTICE



Introducing our **NEW** website!
www.plumberschoice.com.au

837 1.1K comments 78 shares

Leadax[®]

**NO
LEAD**



- Leadax is quick and easy to install
- Leadax moulds to tiles just like lead
- Price competitive against lead

300mm x 6m Black
Code: 8014

400mm x 6m Black
Code: 8015

Available at Plumbers Choice



BULK SPECIAL

FREE SAW WITH ANY BOX OF PEX CLIPS



Valid until October 31st 2019



DOUBLE BOWL CONNECTOR

CODE	SIZE	PRICE
2804	50mm x 350mm	\$7.84
2839	50mm x 600mm	\$15.44



P-TRAP

CODE	SIZE	PRICE
2799	40mm	\$6.40
2798	50mm	\$6.60



COMBO S&P TRAP

CODE	SIZE	PRICE
2802	40mm	\$6.23
2803	50mm	\$7.36



P-TRAP SHORT LEG

CODE	SIZE	PRICE
2796	40mm	\$8.97
2797	50mm	\$8.97



COUPLING PVC THREADED MI

CODE	SIZE	PRICE
2823	40mm	\$1.34
2825	50mm	\$1.34



COUPLING PVC THREADED FI

CODE	SIZE	PRICE
2822	40mm	\$1.34
2824	50mm	\$1.34



SPIGOT ADAPTOR MI

CODE	SIZE	PRICE
2631	40mm	\$2.83
2629	50mm	\$3.17



SPIGOT ADAPTER FI

CODE	SIZE	PRICE
2632	40mm	\$2.83
2630	50mm	\$3.17



SLAB REPAIR COUPLING

CODE	SIZE	PRICE
2623	40mm	\$4.75
2624	50mm	\$4.30



M/F IN PIPE BENDS 88°

CODE	SIZE	PRICE
2626	40mm x 88 Degree	\$3.17
2625	50mm x 88 Degree	\$3.40



BENDS 88° PLAIN F/F DWV

CODE	SIZE	PRICE
2808	40mm x 88 Degree	\$1.21
2809	50mm x 88 Degree	\$1.40



BENDS 88° M/F DWV

CODE	SIZE	PRICE
2816	40mm x 88 Degree	\$3.11
2818	50mm x 88 Degree	\$3.11



BEND 45° PLAIN F/F DWV

CODE	SIZE	PRICE
2806	40mm x 45 Degree	\$1.21
2807	50mm x 45 Degree	\$1.40



M/F BENDS 45° DWV

CODE	SIZE	PRICE
2815	40mm x 45 Degree	\$1.98
2817	50mm x 45 Degree	\$2.32



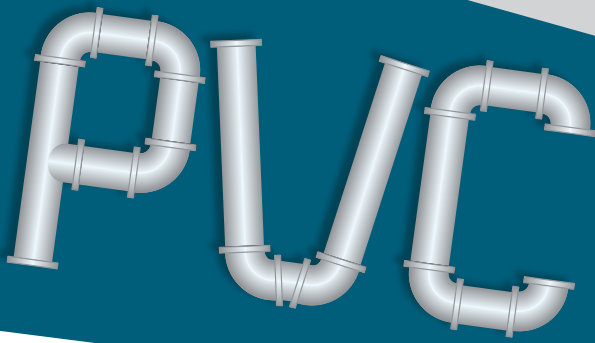
JUNCTION PLAIN 88°

CODE	SIZE	PRICE
2837	40mm x 88 Degree	\$4.97
2836	50mm x 88 Degree	\$4.97



JUNCTION PLAIN 45°

CODE	SIZE	PRICE
2628	40mm	\$4.97
2627	50mm	\$4.97



ALL PVC
COMPLIES
WITH
ASNZ1260

WE HAVE A GREAT
RANGE OF DWV
FITTINGS TO COVER ALL
YOUR FIT OFF NEEDS

*ALL PRICES INCLUDE GST

FITTINGS



VENT COWL

CODE	SIZE	PRICE
2829	50mm	\$1.97



WEATHERING APRON

CODE	SIZE	PRICE
2633	50mm	\$1.53



AIR ADMITTANCE VALVE

CODE	SIZE	PRICE
2465	32mm, 40mm, 50mm	\$32.44



LEVEL INLET TAPER

CODE	SIZE	PRICE
2622	40mm x 50mm	\$3.40



SOCKET REDUCER

CODE	SIZE	PRICE
2620	40mm x 50mm	\$2.83



PIPE REDUCER

CODE	SIZE	PRICE
2621	40mm x 50mm	\$3.96



TRAP ADAPTOR

CODE	SIZE	PRICE
2795	32-40mm	\$1.44



TRAP EXTENSION WITH OVERFLOW

CODE	SIZE	PRICE
2784	50mm x 60mm	\$8.21



TRAP EXTENSION

CODE	SIZE	PRICE
2780	40mm x 25mm	\$5.49
2781	50mm x 25mm	\$5.49



TRAP EXTENSION SOLVENT WELD

CODE	SIZE	PRICE
2782	40mm x 200mm	\$15.68
2783	50mm x 200mm	\$15.68



PAN COLLAR 100MM

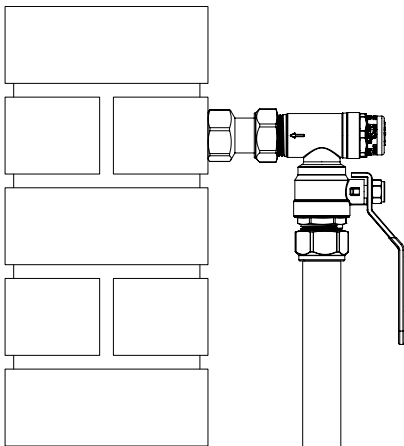
CODE	SIZE	PRICE
2800	Standard	\$6.39
2801	20mm Offset	\$6.39



FLEXI FIN PAN COLLAR

CODE	SIZE	PRICE
2821	100mm	\$11.08
2820	20mm Offset	\$11.52
2634	40mm Offset	\$15.28

Pressure Reduction Valve Ball Valve PRVB-BV



- Includes Patented PRV design
- Convenient wall location
- Quick and easy to install
- Reduced number of fittings required to install
- Less potential leak points
- Innovative universal loose nut adaptor
- Superior flow capacity, 170 litres/min as per AS1357.2

Code: 3600

STOP TAP LOOSE NUT TRI VALVE

NEW

- Loose nut for ease of installation
- Ceramic Disc
- Unique rubber cone makes installation quick and simple
- Connect tap and dishwasher with single fitting
- Ideal for confined spaces
- Confirms AS3718

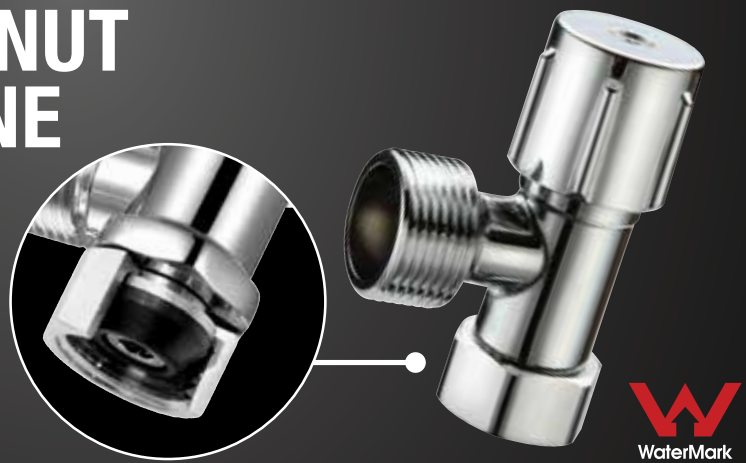
CODE: 6251



STOP TAP LOOSE NUT WASHING MACHINE

- Loose nut for ease of installation
- Ceramic Disc
- Unique rubber cone makes installation quick and simple
- Ideal for confined spaces
- Confirms AS3718

CODE: 6590



STOP TAP LOOSE NUT

- Loose nut for ease of installation
- Ceramic Disc
- Unique rubber cone makes installation quick and simple
- Ideal for confined spaces
- Confirms AS3718

CODE: 6587





GAS TESTING EQUIPMENT



CHS CHRIS HUNTER SALES



BONDING STRAP

\$108³⁶
INC. GST
Code: 1527



MANOMETER TESTING TEE

\$86³⁵
INC. GST
Code: 1744

MANOMETER

- Strong aluminum case
- Complete with rubber connecting hose

800mm

- Tests up to 8kPa
- Ideal manometer for testing fitting lines

\$150²⁷
INC. GST
Code: 1743

300mm

- Tests up to 3kPa
- Ideal manometer for testing appliances

\$120⁵⁸
INC. GST
Code: 1870



SHOWER MIXER FIXER



CHROME PLATED



- Replace shower mixers with ease
- Fits all mixers
- Chrome plated brass

Pack Qty 1

OVAL

Code 2987 \$82.28

RECTANGLE

Code 2983 \$84.48



PRESS FITTINGS COPPER & BRASS

all prices include GST

PRESS GAS FITTINGS



PRESS GAS COUPLING

CODE	SIZE	PRICE
8639	15mm	\$5.86
8640	20mm	\$7.52
8641	25mm	\$12.87



PRESS GAS SLIP REPAIR COUPLING

CODE	SIZE	PRICE
8642	15mm	\$5.62
8643	20mm	\$7.06
8644	25mm	\$10.95



PRESS GAS ELBOW F/F 90°

CODE	SIZE	PRICE
8645	15mm x 90	\$6.96
8646	20mm x 90	\$9.10
8647	25mm x 90	\$16.72



PRESS GAS ELBOW F/F 45°

CODE	SIZE	PRICE
8648	20mm x 45	\$10.86
8649	25mm x 45	\$14.47



PRESS GAS REDUCING COUPLING F/F

CODE	SIZE	PRICE
8650	20mm x 15mm	\$10.40
8651	25mm x 20mm	\$12.82



PRESS GAS REDUCER M/F

CODE	SIZE	PRICE
8652	20mm x 15mm	\$9.09
8653	25mm x 20mm	\$12.28



PRESS GAS TEE

CODE	SIZE	PRICE
8654	15mm	\$8.04
8655	20mm	\$13.86
8656	25mm	\$21.67



PRESS GAS TEE REDUCING

CODE	SIZE	PRICE
8657	20 x 20 x 15	\$14.31
8658	25 x 25 x 15	\$22.02
8659	25 x 25 x 20	\$24.34



PRESS GAS END CAP

CODE	SIZE	PRICE
8660	15mm	\$7.58
8661	20mm	\$8.54
8662	25mm	\$15.05



SPECIAL

PRESS GAS ELBOW LUGGED

CODE	SIZE	PRICE
8663	15mm x 15FI	\$8.80
8664	20mm x 20FI	\$11.00



SPECIAL

PRESS GAS ELBOW LUGGED (90MM)

CODE	SIZE	PRICE
8665	15mm x 15FM	\$11.00



PRESS GAS ADAPTOR MI

CODE	SIZE	PRICE
8666	15mm x 15MI	\$5.16
8667	20mm x 20MI	\$12.72
8668	25mm x 25MI	\$20.03



PRESS GAS ADAPTOR FI

CODE	SIZE	PRICE
8669	15mm x 15FI	\$6.96
8670	20mm x 20FI	\$10.60
8671	25mm x 25FI	\$14.45

25 YEAR WARRANTY*

* AusPress Copper press fittings are guaranteed for twenty five (25) years when;
 - installed with WaterMark approved copper tube compliant with AS1432 and, - the installer observes our recommended installation procedures as detailed in our product and technical information (available on our website) and, - the product is fit-for-purpose in conjunction with the intended application.

PRESS WATER FITTINGS



PRESS WATER COUPLING

CODE	SIZE	PRICE
8601	15mm	\$3.87
8602	20mm	\$5.73
8603	25mm	\$8.15



PRESS WATER SLIP REPAIR COUPLING

CODE	SIZE	PRICE
8604	15mm	\$4.39
8605	20mm	\$6.51
8606	25mm	\$9.85



PRESS WATER ELBOW F/F 90°

CODE	SIZE	PRICE
8607	15mm x 90	\$4.39
8608	20mm x 90	\$6.72
8609	25mm x 90	\$12.39



PRESS WATER ELBOW F/F 45°

CODE	SIZE	PRICE
8610	15mm x 45	\$5.48
8611	20mm x 45	\$7.56
8612	25mm x 45	\$13.92



PRESS WATER ELBOW M/F 90°

CODE	SIZE	PRICE
8681	15mm	\$5.06
8682	20mm	\$6.66



PRESS WATER REDUCING COUPLING F/F

CODE	SIZE	PRICE
8613	20mm x 15mm	\$8.78
8614	25mm x 20mm	\$14.97



PRESS WATER REDUCER M/F

CODE	SIZE	PRICE
8615	20mm x 15mm	\$7.87
8616	25mm x 20mm	\$11.18



PRESS WATER TEE

CODE	SIZE	PRICE
8617	15mm	\$6.77
8618	20mm	\$10.20
8619	25mm	\$18.92



PRESS WATER TEE REDUCING

CODE	SIZE	PRICE
8620	20 x 20 x 15	\$12.65
8621	25 x 25 x 15	\$17.90
8622	25 x 25 x 20	\$21.49



PRESS WATER END CAP

CODE	SIZE	PRICE
8623	15mm	\$6.95
8624	20mm	\$8.43
8625	25mm	\$16.51



PRESS WATER ELBOW LUGGED

CODE	SIZE	PRICE
8626	15mm x 15FI	\$8.80
8627	20mm x 20FI	\$11.00



PRESS WATER ELBOW LUGGED (90MM)

CODE	SIZE	PRICE
8628	15mm x 15MI	\$11.00



PRESS WATER ELBOW FI

CODE	SIZE	PRICE
8629	15mm x 15FI	\$13.82
8630	20mm x 20FI	\$16.74



PRESS WATER ELBOW MI

CODE	SIZE	PRICE
8631	15mm x 15MI	\$13.32
8632	20mm x 20MI	\$16.75



PRESS WATER ADAPTOR

CODE	SIZE	PRICE
8633	15mm x 15MI	\$6.50
8634	20mm x 20MI	\$10.74
8635	25mm x 25MI	\$19.21



PRESS WATER ADAPTOR REDUCING

CODE	SIZE	PRICE
8636	15mm x 15FI	\$6.17
8637	20mm x 20FI	\$7.87
8638	25mm x 25FI	\$14.03



PRESS UNION

CODE	SIZE	PRICE
8679	20mm Loose Nut x 20mm Press	\$10.99

- Flame-free
- Permanent V-Profile press join profile
- All fittings comply with Australian Standards AS3688



TUBE CUTTER TOOLS

RIDGID

TUBE CUTTER NO. 150
6mm-28mm

- To suit copper tube 6mm to 28mm
- Quality U.S.A manufacture
- Genuine Ridgid product

Code: 1146



RIDGID

TUBE CUTTER NO. 205
RATCHETING

- To suit copper tube 6mm to 60mm
- Genuine Ridgid product

Code: 9998



RIDGID

TUBE CUTTER NO. 104
5mm-24mm

- To suit copper tube 5mm to 24mm
- Quality U.S.A manufacture
- Genuine Ridgid product

Code: 1857



RIDGID

TUBE CUTTER NO. 101
6mm-28mm

- To suit copper tube 6mm to 28mm
- Quality U.S.A manufacture
- Genuine Ridgid product

Code: 9932



MONUMENT TOOLS

TUBE CUTTER AUTOCUT 1"

Code: 2282

\$73.12
INC. GST

- Ideal for use in confined spaces
- No adjustment required
- Quality UK manufacture

KIT DEAL

TUBE CUTTER AUTOCUT KIT

\$165.00
INC. GST

Kit includes:

- 1" Tube Cutter **NEW**
- 3/4" Tube Cutter
- 1/2" Tube Cutter
- 3 x Replacement Wheels



Code: 2331

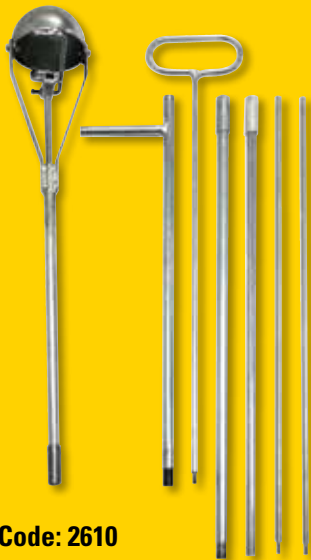
MADE IN BRITAIN



\$260^{.46}
INC. GST



**EXTENDABLE
UP TO 2 METRES**



Code: 2610

DON'T TAKE THE RISK

The Gully Grabber is designed to remove hazards and blockages safely. Extends up to 2 metres. Stores in a handy 600mm tube. Genuine Plumtool. **Patented**



WILL NOT RUST!

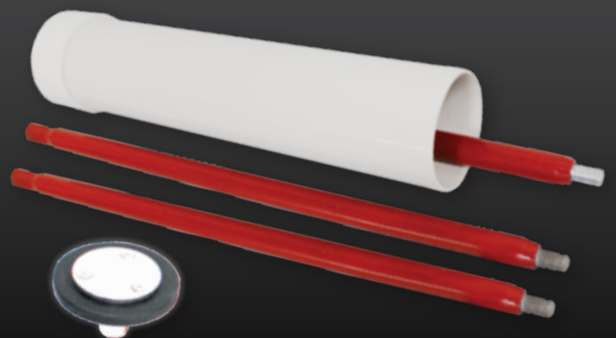
\$196^{.71}
INC. GST

THE ULTIMATE PLUNGER

Extends to 1650mm

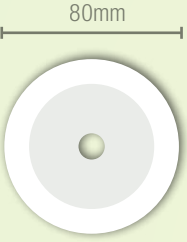
- Kit Contains: 3 x 550mm handles, extends to 1650mm in length
- All stainless steel head will not rust
- Moulded rubber with rounded edges
- Comes in heavy duty storage container (Extra handles available)
- Also contains 150mm plunger rubber

Code: 1954



- For a professional finish inside the cupboard.
- Flexy Flange cupboard plate fits tight to pipe which makes it ant-proof.

1 Flexy Flange Fits 4 Sizes!



80mm


Suits 9-22mm pipe

Small

Pack Qty 10

\$21²⁰ INC. GST

Code: 8250

90mm

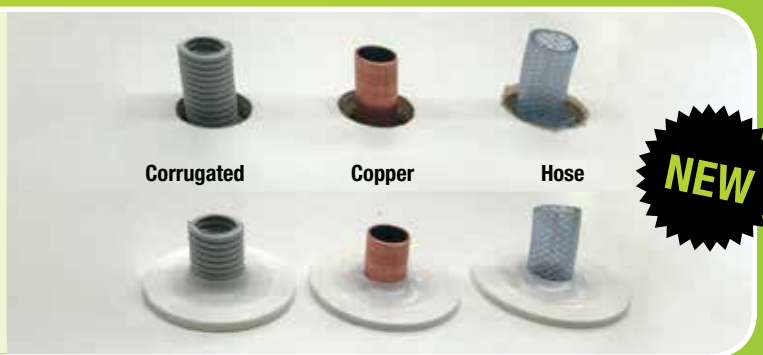
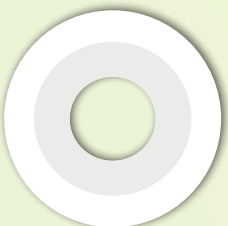
Suits 22-44mm pipe

Medium

Pack Qty 5

\$14⁰⁷ INC. GST

Code: 8252

105mm

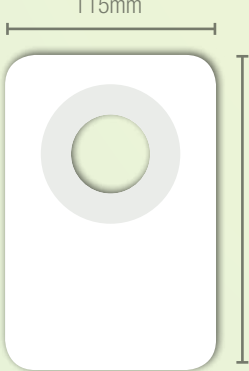
Suits 40-60mm pipe

Large

Pack Qty 5

\$15⁶⁸ INC. GST

Code: 9968

115mm

170mm

Suits 40-60mm pipe

Rectangle

Pack Qty 5

\$20⁸⁵ INC. GST

Code: 2202



BLACK COVER PLATES

Powder coated black metal. Professional architectural finish.



Flat

1/2 Inch BSP Flat

Pack Qty 1 | Code 4018 | \$12.40ea



Flat 40mm

40mm PVC Flat

Pack Qty 1 | Code 4019 | \$20.09ea



Square Flat

1/2 Inch BSP Flat

Pack Qty 1 | Code 4025 | \$18.90ea



10mm Rise

1/2 Inch BSP 10mm Rise

Pack Qty 1 | Code 4015 | \$13.08ea



Flat 50mm

50mm PVC Flat

Pack Qty 1 | Code 4020 | \$20.09ea



Square Rise

1/2 Inch BSP 10mm Rise

Pack Qty 1 | Code 4026 | \$18.90ea



Stop Tap Matte Black

Pack Qty 1 | Code 6591 | \$66.00ea



Black is Beautiful



HOLE SAW KIT

- Excellent quality
- Bi-metal
- M2 high speed steel
- 8% Cobalt

KIT CONTAINS

- 44mm to suit 40mm DWV
- 57mm to suit 50mm DWV
- 73mm to suit 65mm DWV
- 92mm to suit 90mm DWV
- 114mm to suit 100mm DWV
- 7/16 Arbor



\$176⁰⁰
INC. GST

Code: 9429



**SUITS
STANDARD
PVC SIZES**

TUNGSTEN HOLE SAW KIT

- Pilot drill has tungsten tip suitable for cement sheet or timber
- Sizes to suit DWV pipe
- Drill tips made from certified YB8C Tungsten

KIT CONTAINS

- Tungsten tip arbor
- 44mm, 59mm, 73mm, 93mm & 114mm hole saws



\$198⁰⁰
INC. GST

Code: 9430



**GREAT
FOR
TIMBER
FRAMES**

RAPID BORE KIT

- Long lasting and fast drilling
- The ultimate wood drilling tool
- Resharpenable

KIT CONTAINS

- Allen Key for replacing Spirals
- Heavy duty steel carry case
- 2 x Spare Spirals
- File for sharpening
- 25mm, 32mm, 45mm & 57mm Rapid Bores



\$198⁰⁰
INC. GST

Code: 9936



**4x
FASTER THAN
TRADITIONAL
HOLESAWS**

plumtool™

Innovative tools for PLUMBERS

Pex Clips

Saddle For Pex Yellow

MASONRY NAIL



- Suits most gas pex pipe on the Australian market
- Keeps pipework off the substrate
- UV Stabilised
- Masonry nail

32mm
Code: 9043
Bag of 25 **\$23.77**

**BAG
QTY 25**

**BAG
QTY 100**



**Pex Saddles
MASONRY NAIL**

25mm Code: 9056 **\$35.95**



**Pex Saddles
SD SCREW**

25mm Code: 4523 **\$38.51**



**DUALPEX
SD SCREW**

16mm to 20mm
Code: 5558 **\$31.06**



**DUALPEX
MASONRY NAIL**

16mm to 20mm
Code: 5559 **\$28.80**



**DUALPEX
TWISTED NAIL**

16mm to 20mm
Code: 7895 **\$32.07**



**DUALPEX
TIMBER SCREW**

16mm to 20mm
Code: 5568 **\$32.07**

PRICES INC. GST



REDBACK
TRADE CONSUMABLES

The **ONLY** Fit Off™ tape with an **AGA Approval**



Fit Off™ Teflon Tape

Blends in with
chrome tapware

- Approved thread tape for water, air & gas
- AGA Certified for Gas
- The original & the best, beware of imitations



Code: 1546 Qty: Box of 100 rolls