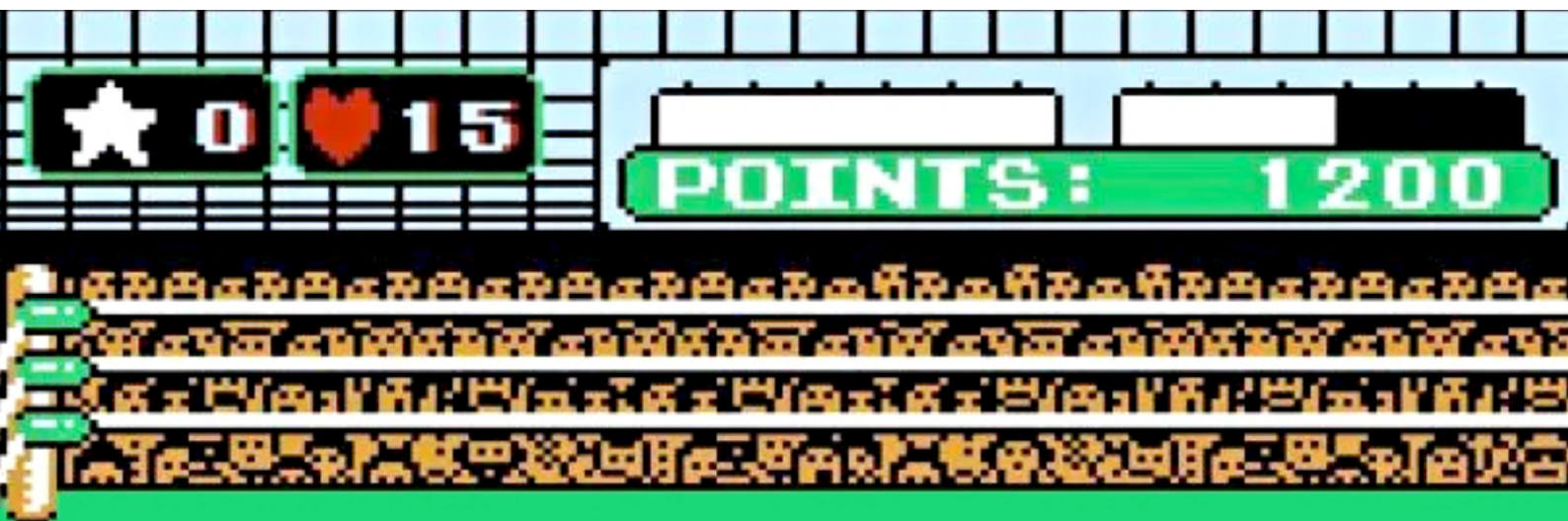


plumbers choice

**TRADE
ONLY**



**TRADE ONLY
IS PUNCHING
ABOVE ITS
WEIGHT!**



489 Mountain Highway, Bayswater, VIC 3153
Email: info@plumberschoice.com.au Ph: (03) 9720 8274 Fax: (03) 9720 0146

www.plumberschoice.com.au





Luke's Editorial

TRADE ONLY IS PUNCHING ABOVE ITS WEIGHT!

The Trade Only concept has made quite a splash in the plumbing industry in recent times. Thanks to the support of plumbers, this concept has allowed us to grow faster than any of our competitors. Traditional plumbing suppliers have reached a deadlock, all offering similar service, all competing in the same way. All happily selling to DIY (your customers).

It is time for a change and Plumbers Choice, with our Trade Only policy is delivering that change.

We will continue to punch above our weight and deliver the innovation and change that our industry deserves.

LUKE BOLTON - DIRECTOR, PLUMBERS CHOICE



HOW TO ORDER



Online - 24 hours
www.plumberschoice.com.au



Email - 24 hours
sales@plumberschoice.com.au



Fax - 24 hours
(03) 9720 0146
Use our handy Order Form.



Phone - Business Hours
(03) 9720 8274
Our knowledgeable staff will take your order.



At our Show Room
Mon - Fri 7:30am - 5pm
489 Mountain Highway, Bayswater, Victoria 3153



Personal Sales Rep
Your personal Sales Representative is able to tailor our service to suit your needs.



SPECIAL

VALVES

ONLY
\$33.00
INC GST



TRI-SET VALVES

- One valve with three pressure settings
350kPa, 500kPa & 600kPa

Compression 15mm **Code: 3610**

Female 15mm **Code: 3611**

ONLY
\$33.00
INC GST



COLD WATER EXPANSION VALVES

- 2 year warranty
- Comes with insulation

1200 kPa **Code: 3604**

850 kPa **Code: 3605**

Valid until August 31st 2019

W
WaterMark

CARBON MONOXIDE ANALYSER

Code: 8020

NEW

- Suitable for testing as per VBA Carbon Monoxide Safety Program
- Measures carbon monoxide in ambient applications as well as high heat flue situations.
- Measures 0 ~ 10,000 ppm CO
- Save and recall readings with time and date stamp
- Pump driven
- 1 PPM sensitivity
- Infrared port for use with optional A740 IR printer



FREE
SMOKE PEN
WITH ANALYSER

Valid until 31st
August 2019

Smoke Pen



SMOKE PEN

\$78⁴⁷
INC. GST
Code: 9837



NEW

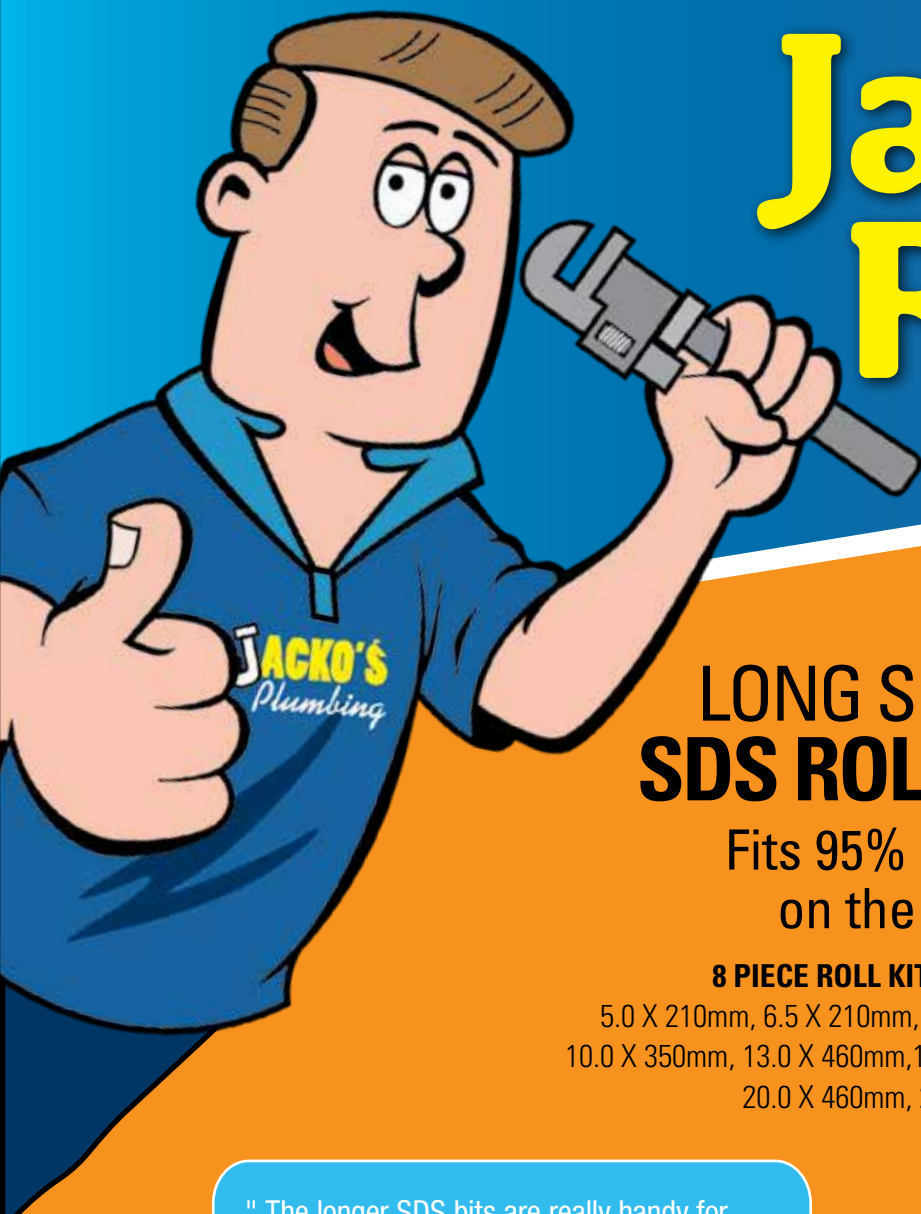


- Specified for carbon monoxide testing
- Ideal for testing the slightest air movement & gas spillage
- HVAC air movement or leakage checks

- Comes with 6 smoke wicks
- Refill packs of wicks available
- Non-toxic

As seen on VBA Training video www.vba.vic.gov.au/carbon-monoxide-safety-program

CHS CHRIS HUNTER
SALES



Jacko's Review

LONG SERIES SDS ROLL KIT

Fits 95% of drills
on the market

8 PIECE ROLL KIT CONTAINS:

5.0 X 210mm, 6.5 X 210mm, 8.0 X 350mm,
10.0 X 350mm, 13.0 X 460mm, 16.0 X 460mm,
20.0 X 460mm, 25.0 X 460mm

GET IN QUICK!

\$99.00
INC. GST

SAVE \$66.00

plumtool

Code: 1563

" The longer SDS bits are really handy for going through double brick, the larger sizes let you run copper through brick and the way the bits are rolled up makes them easy to store "

Greg @ Globle AMORS Plumbing

" The roll-up pouch makes the drill bits easy to store. Having the drill bits in a pouch has been great because I'm not loosing any of them in the bottom of my toolbox. I've used the drill bits for a while now and their quality is great "

Liam @ HORNET Plumbing



Valid until 31st August 2019

EXTENDO

GAS CONNECTOR

Extendable
from **650mm**
to **1200mm**

BROMIC
PLUMBING & GAS



- ✓ 1 Connector does it all!
- ✓ Stock just 1 connector to save space in van
- ✓ 12mm internal bore for better gas flow
- ✓ Flame resistant stainless steel
- ✓ AGA Approved 8633G
- ✓ 1/2" M+F

Code: 6175

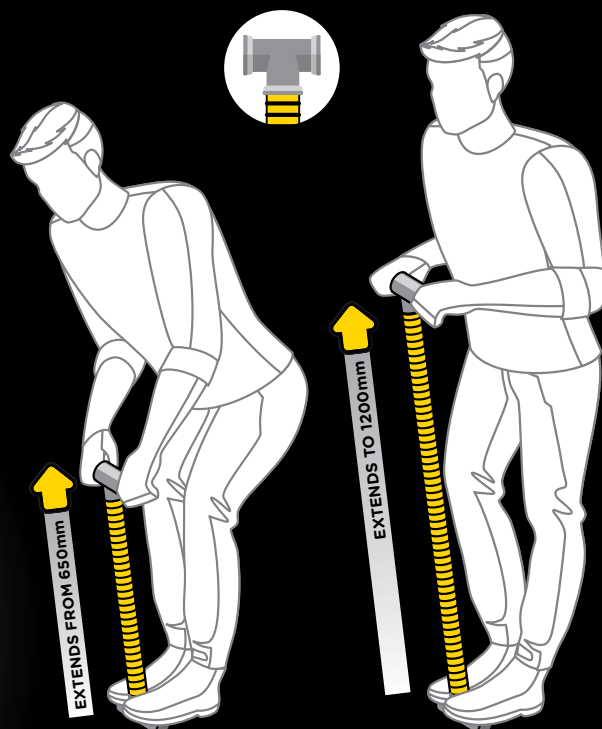


\$231⁰⁰
INC. GST
Code: 6176

**BOX
10**

HANDY TIP:

Attach a brass tee to either end
to create a handle



BRASS COVER PLATES



NEW



Rough Brass
1/2 Inch BSP
10mm rise
Code 4001



Rough Brass
3/4 Inch BSP
10mm rise
Code 4002



ENGRAVED COVER PLATES

*leave a lasting
IMPRESSION*

**VALID UNTIL
31ST AUGUST 2019**

- Excellent marketing tool
- Etch your company name to leave a lasting impression
- Better than a fridge magnet



Rough Brass
1/2 Inch BSP
10mm rise
Code 4003
Qty 30 \$247.50 INC. GST



Stainless Steel
1/2 Inch BSP
10mm rise
Code 4004
Qty 100 \$220.00 INC. GST

ONLY
\$60⁶⁷
INC GST
Code: 5609

SOLVENT MATES

A better alternative for
applying Priming Fluids
& Solvent Cements

- **6x Faster than rollers & brushes**
- For use in joining PVC pipes & fittings
- Avoids mess
- Reduces contact with harsh chemicals



plumtoolTM

Innovative tools for **PLUMBERS**



GRADIENT LEVEL ADJUSTABLE

- Great drainers' tool
- Set dial to gradient required
- As used by plumbing inspectors
- Can also be used as a standard level
- 600mm

Code: 2493



ONLY
\$198⁰⁰
INC GST

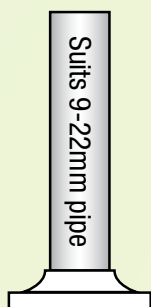
plumtoolTM

Innovative tools for **PLUMBERS**

- For a professional finish inside the cupboard.
- Flexy Flange cupboard plate fits tight to pipe which makes it ant-proof.

1 Flexy Flange Fits 4 Sizes!

80mm



Small

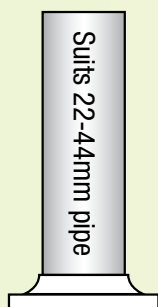
Pack Qty 10

\$21²⁰ INC. GST

Code: 8250



90mm

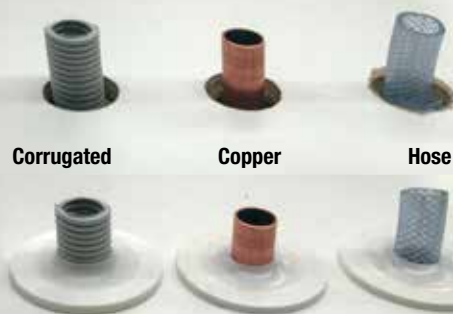


Medium

Pack Qty 5

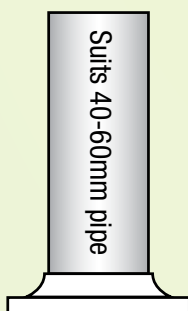
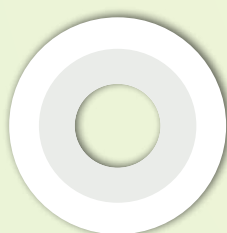
\$14⁰⁷ INC. GST

Code: 8252



NEW

105mm



Large

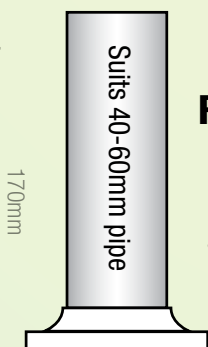
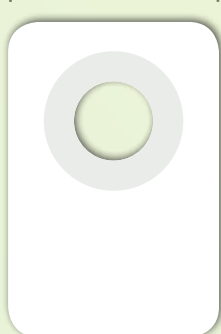
Pack Qty 5

\$15⁶⁸ INC. GST

Code: 9968



115mm



Rectangle

Pack Qty 5

\$20⁸⁵ INC. GST

Code: 2202

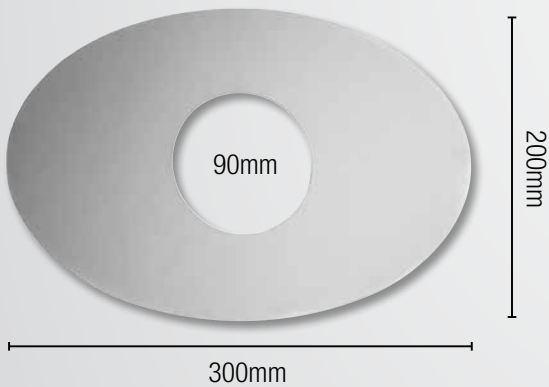


COMPLETE

COVER PLATES

Shower Mixer Fixer

CHROME
PLATED



- Replace shower mixers with ease
- Fits all mixers
- Chrome plated brass
- Qty 1

\$82²⁸ INC. GST
Code: 2987

Tiler's Boo Boo

- For use behind tap flanges that do not cover the hole in tiles
- Chrome plated brass

CHROME
PLATED



Square
Pack Qty 1
\$15⁷¹ INC. GST
Code: 6170



Round
Pack Qty 1
\$14²⁵ INC. GST
Code: 4012





TAP



WALL SINK SET

Code: 3703 \$84.84 (INC. GST)



HOB SINK SET

Code: 3706 \$93.50 (INC. GST)



BASIN SET

Code: 3700 \$79.49 (INC. GST)



BATH SET

Code: 3701 \$49.90 (INC. GST)



BASIN TOP ASSEMBLIES

Code: 3707 \$35.15 (INC. GST)



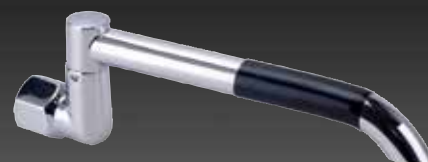
SWIVEL SPOUT WALL TUBE C/P 180mm

Code: 7095 \$18.91 (INC. GST)



SWIVEL SPOUT HOB TUBE C/P 180mm

Code: 7096 \$18.52 (INC. GST)

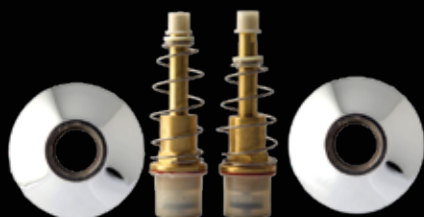


LAUNDRY ARM SWIVEL C/P 150mm

Code: 3711 \$10.84 (INC. GST)

WARE

CHROME PLATED FINISH



TOP ASSEMBLIES RECESSED 15mm

Code: 7500 \$14.76 (INC. GST)



BOOSTER HANDLES & BUTTONS

Code: HD09 \$5.34 (INC. GST)



WALL TOP ASSEMBLIES

Code: 3704 \$35.15 (INC. GST)

Code: 3710 Ceramic Disc \$66.28 (INC. GST)



WASHING MACHINE SET

Code: 3705 \$42.64 (INC. GST)



WASHING MACHINE CONVERSION UNIT UNIVERSAL

Code: WMC \$163.43 (INC. GST)



SHOWER SET

Code: 3702 \$54.89 (INC. GST)



SHOWER ROSE UNIVERSAL ALL DIRECTIONAL

Code: SH02 \$18.89 (INC. GST)

Code: SH02SW Loose Nut \$21.60 (INC. GST)

Leadax[®]

**NO
LEAD**

- Leadax is quick and easy to install
- Leadax moulds to tiles just like lead
- Price competitive against lead

300mm x 6m Black
Code: 8014

400mm x 6m Black
Code: 8015

Available at Plumbers Choice


**LEAD IS
DEAD**

Pex Clips

NYLON ANCHOR MASONRY NAIL

For 16-20mm Pex Pipe

\$33³¹
INC. GST
Code: 7896

BAG
100



With Nylon Anchor

**ALL IN
ONE CLIP
& PLUG**



BAG
QTY 100



Pex Saddles
MASONRY NAIL

25mm Code: 9056 **\$35.95**



Pex Saddles
SD SCREW

25mm Code: 4523 **\$38.51**



DUALPEX
SD SCREW

16mm to 20mm
Code: 5558 **\$31.06**



DUALPEX
MASONRY NAIL

16mm to 20mm
Code: 5559 **\$28.80**



DUALPEX
TWISTED NAIL

16mm to 20mm
Code: 7895 **\$32.30**



DUALPEX
TIMBER SCREW

16mm to 20mm
Code: 5568 **\$32.07**

PRICES INC. GST

SPILL SAFE



STOP THE SLOP



1 Tip entire contents into pan



2 Allow to set

3 Remove pan

- Turn the pan water to GEL
- No more water spills to clean up

\$7⁰⁷
INC. GST
Code: 2509



RED BACK



DRAIN DYE

**NON
TOXIC
TO THE
ENVIRONMENT**

- Designed to trace waterflows in sewer & storm water drains
- 40g tub contains: 20g green & 20g red



1kg Red
\$217⁸⁹
INC. GST
Code: 9902

1kg Green
\$217⁸⁹
INC. GST
Code: 2511

40g tub
\$24⁰⁵
INC. GST
Code: 1947



RED BACK



PLUG & WASTE

**AVAILABLE
NOW**



PLUG & WASTE QUATTRO POP UP

4 in 1

- Suitable for use on basins with or without overflow
- Suitable for 32 & 40mm outlets

40/32 \$20.79 INC GST Code: 9005



PLUG & WASTE PLASTIC WITH S/S TRIM

40mm \$5.47 INC GST Code: 9024



**WITH
OVERFLOW**

CHROME

PLUG & WASTE CHROME WITH OVERFLOW

32mm \$20.00 INC GST Code: 9022

40mm \$20.00 INC GST Code: 9020



CHROME

PLUG & WASTE CHROME

32mm \$20.00 INC GST Code: 9023

40mm \$20.00 INC GST Code: 9021

Plumbers' Bedding Compound

For a professional finish

- Easier clean up than silicone
- Remains flexible
- Temperature range: -10°C to +100°C
- Made in Germany

\$20⁸⁵
INC. GST
Code: 1846

**MADE IN
GERMANY**



Applications: Plug Sink Toilet



1. Roll out and place around plug and washer



2. Tighten plug and washer into place



3. Remove excess bedding compound



4. Job completed

**TIP OF
THE
MONTH**



We'll tip
YOU
when you tip
US!



Every featured story receives a
\$200 Store Credit

**Give your
glove some
LOVE!**



Regularly apply some cutting lubricant to your Ridgid glove. This will make the cable run more smoothly and prolong the life of the glove. Best applied when the glove is dry.

Andrew Chaplin - Paric Plumbing

Thanks mate we'll be sending you \$200 Store credit

**Drilling
PVC Pipe**



When drilling a hole saw through plastic, always run your drill in reverse. This will ensure you don't shatter the plastic. It will also prevent you breaking your wrist, when the drill kicks.

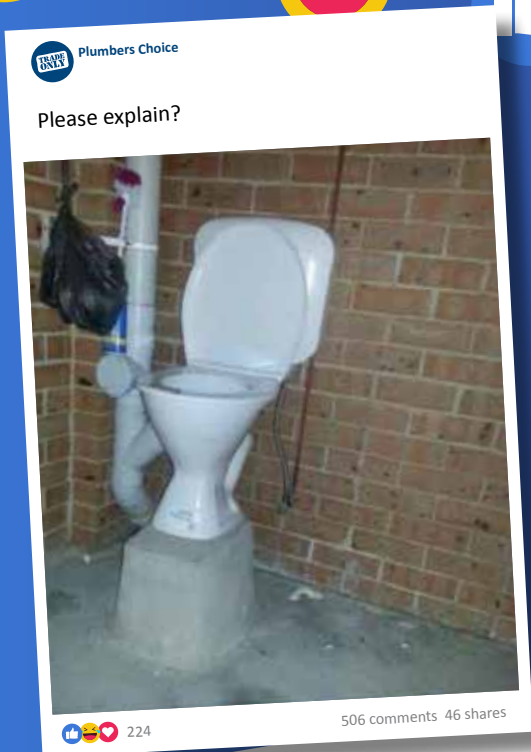
Luke Bolton - Plumber Choice

Thanks mate we wont be sending you \$200 Store credit :)

To get involved send us an email info@plumberschoice.com.au

46K
FOLLOWERS

Join the ^{TRADE ONLY} Conversation on **facebook**



STOP TAP LOOSE NUT TRI VALVE

NEW

- Loose nut for ease of installation
- Ceramic Disc
- Unique rubber cone makes installation quick and simple
- Connect tap and dishwasher with single fitting
- Ideal for confined spaces
- Conforms to AS3718

CODE: 6251



STOP TAP LOOSE NUT WASHING MACHINE

- Loose nut for ease of installation
- Ceramic Disc
- Unique rubber cone makes installation quick and simple
- Ideal for confined spaces
- Conforms to AS3718

CODE: 6590



STOP TAP LOOSE NUT

- Loose nut for ease of installation
- Ceramic Disc
- Unique rubber cone makes installation quick and simple
- Ideal for confined spaces
- Conforms to AS3718

CODE: 6587



BULK SPECIAL

EZY FIT CONNECTORS PEX LINED BURST PROOF



\$88.00
INC. GST

**BURST-
PROOF**
10 YEAR
WARRANTY

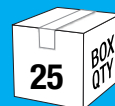
EZY FIT WATER CONNECTOR

- Burst Proof Inner Core
- 1/2"Female x 1/2"Female Connection
- Premium 8mm Straight Water Hose

225mm QTY 25 Code: 5100

300mm QTY 25 Code: 5101

450mm QTY 25 Code: 5102



225mm
\$99.00
INC. GST

150mm
\$88.00
INC. GST

EZY FIT WATER CONNECTOR M & F EXTENSIONS

- Burst Proof Inner Core
- 1/2"Male x 1/2"Female Connection
- Ideal for extending mixer tails that are too short

150mm QTY 20 Code: 5009 \$88.00

225mm QTY 20 Code: 9155 \$99.00



10 Pairs

Valid until August 31st 2019



NEW

Now Available NATIONALLY through **plumbers choice** TRADE ONLY



Fluidmaster®

UNIVERSAL TOILET CISTERN DUAL FLUSH CABLE VALVE



Suits most
toilet cisterns.

Top, Front or Side
Fitted Flush Button.



Code: 1997

FITTED TOP



FITTED FRONT



FITTED SIDE



- Fixes leaking toilets and saves water
- Easily adjusts to cisterns with 16-25mm, 38mm and 48mm button holes
- Quick and easy installation

www.fluidmaster.com.au

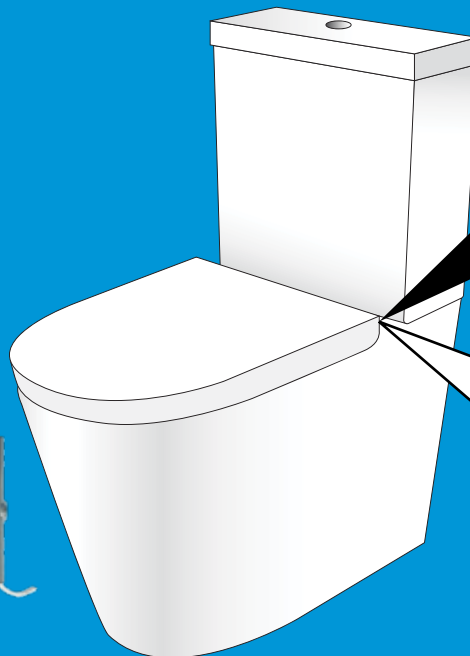
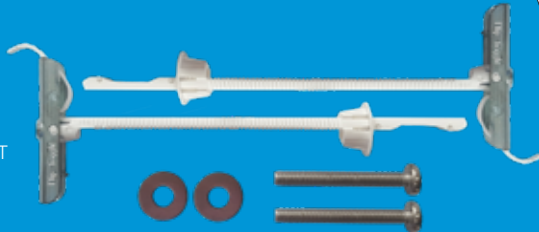


Toilet Seat Fixing

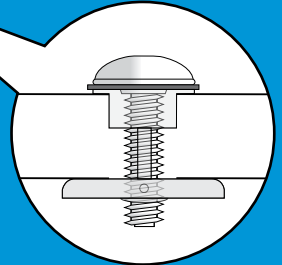
- Top/Blind fixing toilet seat anchor kit
- Easy to fit
- Includes stainless steel bolts and washers

NEW

\$29⁶⁰
INC. GST
Code: 6169



**FOR
BLIND
FIXINGS**



1

STEP 1

Align toggle with hole



2

STEP 2

Insert toggle into fixing hole in pan



3

STEP 3

Slide nylon bush down to hold toggle in position



4

STEP 4

Snap off the shaft leaving the flat of the bush exposed



5

STEP 5

Insert bolt & engage with toggle. Tighten



Wax Pan Seal

Repair leaky toilets
without removing the pan

- Moulded to shape and ready to use
- Remains flexible
- Suitable for "S" or "P" trap pans

\$23⁰³
INC. GST
Code: 1882



CHS CHRIS HUNTER
SALES



PLASTEC
INNOVATIVE PLUMBING SOLUTIONS

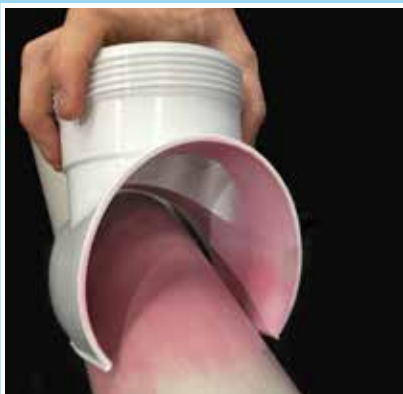
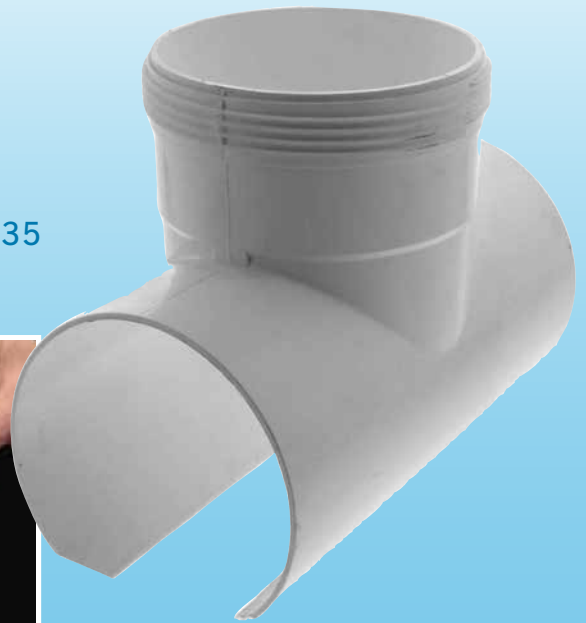
SNAP TEE

100MM WITH CAP

CREATE YOUR OWN ACCESS POINT

- Easy to fit with minimal digging
- No Fernco required
- Comes with screw cap
- A must for drain blockages

Code: 2635



1. Apply Priming Fluid



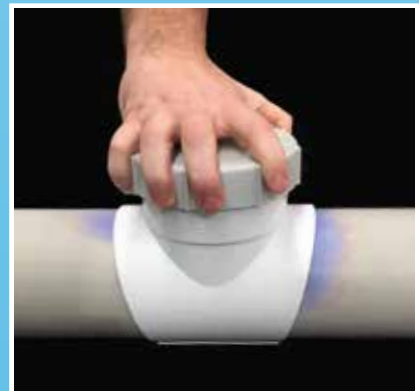
2. Apply Glue



3. Drill Pipe



4. Access Pipe



5. Screw on Cap... Job done!

Trusted Australian brand for over 25 years

All PVC complies with ASNZ1260



CHS CHRIS HUNTER
SALES

RIGHT ANGLED TEST PLUG

- The only plug to use when testing at a right-angled junction
- No need to put your hand down the drain
- 100mm
- Improved design
- Cast aluminium

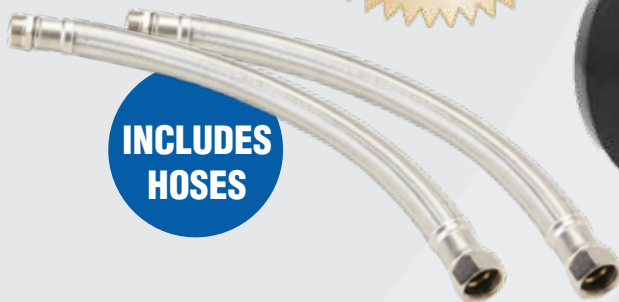
Patented

\$143³⁷ INC. GST
Code: 2004



HHR SERIES RAIN / MAINS CHANGEOVER PUMP

- Electronic controller with run dry protection
- No in-tank float switch
- Quick & easy to install
- AS/NZS 4020 compliant for drinking water contact
- Suitable for single & double storey homes
(UP TO 4 OUTLETS TOILETS & LAUNDRY ONLY)
- Automatically switches to mains in case of power failure
- Watermarked dual check valve for backflow prevention
- **2 year infield warranty**



**INCLUDES
HOSES**



\$605.00
INC. GST
Code: 2014

JET PUMP 60L

- Automatic pressure controller
(Start & stop on demand)
- Run dry protection
- Suitable for toilet & laundry supply



\$418.00
INC. GST
Code: 2013



SUBMERSIBLE PUMP

- Stainless steel motor and pump shaft
- Vortex impeller
- Mechanical seal
with back-up lip seal
- Handles soft solids
up to 30mm



\$159.50
INC. GST
Code: 2012



BRASS STUBBIE TEST CAP

Sometimes shorter is better!

1/2 Inch Brass

- Shorter, makes it easier to install cabinets.
- Never leaks or fails
- Use over & over again
- Indestructible

**BAG
10**

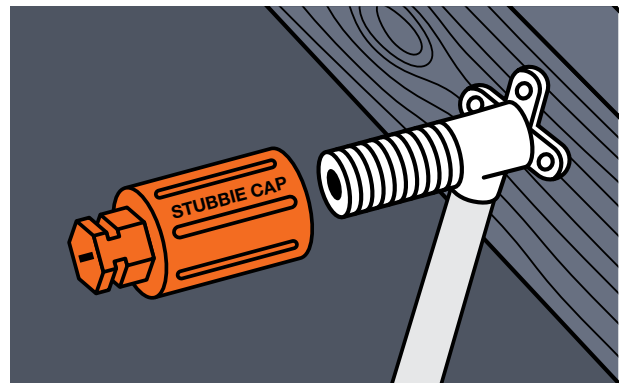
Code: 4804



Can be removed with a screw driver or shifter

STUBBIE TEST CAP

*Sometimes
shorter is
better!*



- Easier to install cabinets
- Can be removed with screw driver or shifter
- Safer high visibility

\$1.19 each
INC. GST
Code: 4803



Combo Digital Gas Manometer

**One kit does
two jobs**

- Operating Range 0 kPa to 10 kPa
- Accuracy 0.5% over Operating Range
- Operating Temperature -10°C to 95°C

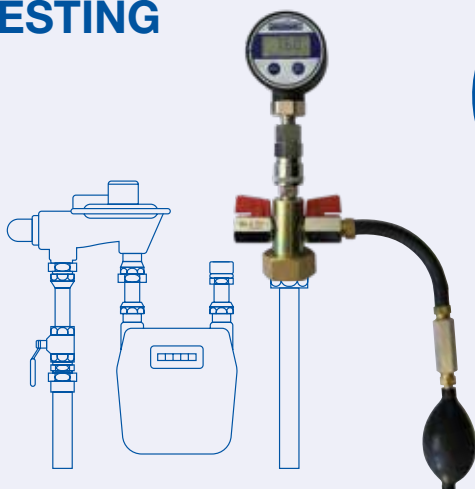
Kit contains:

- Digital Gauge with click on connection
- 700mm Rubber Hose with click on connection
- Testing Tee with click on connection
- Hand Bellows

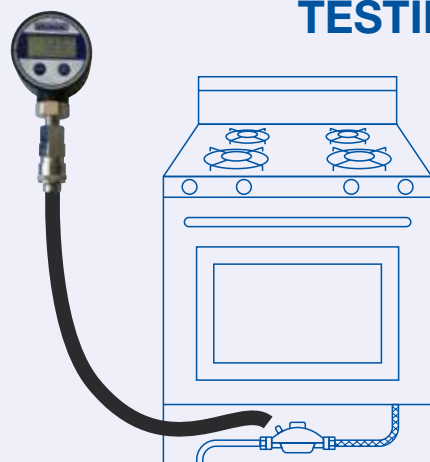
Code: 1826



GAS LINE TESTING



APPLIANCE TESTING





APPROVED DRAIN LAGGING

- Approved drain lagging where pipes pass through concrete
- Australian Draining Standards 3500 Part 2.2 Clause 3.8.2b states - "Drains laid through footings shall be installed with an annular space of not less than 25mm filled with a liner of flexible material"

40mm x 600mm	\$7.88	Code: 9900
50mm x 600mm	\$7.88	Code: 9901
65mm x 600mm	\$7.88	Code: 8922
100mm x 600mm	\$8.05	Code: 9244
150mm x 600mm	\$9.46	Code: 1902

[All prices are per half] *All prices include GST



**DOES
YOUR
JOB
COMPLY?**

*Fast
and Simple
Solution!*



1. Take 2 pieces of Styrolag and place around pipe



2. Fit two halves together, secure first end with duct tape



3. Secure other end with duct tape. Job completed.



DOES YOUR JOB COMPLY?

10 metres x 100mm x 5mm

- Compression resistant
- Closed Cell Polyethylene
- Prevents water penetration under the slab
- Complies with the following Australian Standard...

AS2870-2011 5.6.4 (a)

"Closed-cell polyethylene lagging shall be used around all stormwater and sanitary plumbing drain pipe penetrations through footings. The lagging shall be a minimum of 20mm thick on Class H1/H1-D sites and 40mm on Class H2/H2-D and Class E/E-D sites."



**TOUGH
AND
DURABLE**



\$15⁴²
INC. GST
Code: 9720

STEEL STUDWORK? Plum



FASTANOG

PRELOADED WITH HEX SD SCREW

- Adjustable length 330mm to 600mm
- Faster than timber noggins
- Compulsory in termite areas
- Set back measurer

Code: 1471



FASTANOG

UNLOADED

- Adjustable length 330mm to 600mm
- Faster than timber noggins
- Zinc plated steel
- Set back measurer

Code: 1450



DUALPEX CLIP SD SCREW

ONE CLIP FITS 16mm–20mm PEX PIPE

- Strong self-drilling screw included
- Clips onto the pipe and stays in position until screw is driven in
- Saves time sorting out clips
- Uses half the space in your nail bag
- Save money by only stocking one clip

Patented

\$31⁰⁶
INC. GST

Code: 5558

DUALPEX



DUALPEX CLIP SD SCREW WITH TAB

ONE CLIP FITS 16mm–20mm PEX PIPE

- Strong self-drilling screw included
- Clips onto the pipe and stays in position until screw is driven in
- Saves time sorting out clips
- Uses half the space in your nail bag
- Save money by only stocking one clip

Patented

\$33³¹
INC. GST

Code: 5575

DUALPEX



STUD CLIP 16mm

WITH SD SCREW

- Works in any size hole
- Bag of 100

\$27²³
INC. GST

Code: 5571

STUD CLIP 20mm

WITH SD SCREW

- Works in any size hole
- Bag of 100

\$28⁹²
INC. GST

Code: 5572

Plumbers Choice has the answers



6mm
W



0mm
W



STUD PUNCH

- For the plumber in a hurry!
- Designed for cutting holes in steel stud work
- Cuts holes super fast

\$561⁰⁴
INC. GST

Code: 1914



plumtool™

MULTI-FIT GROMMET

- Works in varying thicknesses of studwork (thickness 0.42mm to 2mm)
- Complies to Australian Standards AS3500.1 12 Clause 5.5 2.2 Part C
- Bag of 100

\$36³⁷

Code: 9241



STEEL STUD DRILL 34MM & 58MM

- Also great in roofing work for overflows, etc
- 34mm to suit yellow grommets
- 58mm great for drainage vents

34mm

58mm

\$66⁰⁴
INC. GST

Code: 2000

\$142³⁶
INC. GST

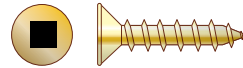
Code: 2001

plumtool™



SCREWS

Fixings & Fastenings



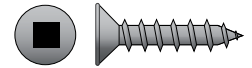
BOX
1000

CHIPBOARD SQUARE DRIVE SCREWS

- Positively stay on driver bit
- Zinc yellow

FREE Driver Bit with every box

CODE	LENGTH	GAUGE	PRICE
1587	25mm	8g	\$28.56
1807	32mm	8g	\$37.55
1808	35mm	8g	\$47.66
1810	40mm	8g	\$51.40
1811	50mm	8g	\$56.22



BOX
1000

CHIPBOARD SQUARE DRIVE SCREWS

- Positively stay on driver bit
- Galvanised Grey Class 4

FREE Driver Bit with every box

CODE	LENGTH	GAUGE	PRICE
9542	25mm	8g	\$52.34
9545	32mm	8g	\$60.76
9546	35mm	8g	\$66.86
9549	40mm	8g	\$74.29
9556	50mm	8g	\$87.76

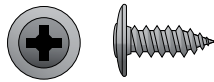


BOX
1000

BUTTON HEAD NEEDLE POINT SCREWS

- Zinc yellow
- Also known as stitching screw

CODE	LENGTH	GAUGE	PRICE
9553	12mm	8g	\$32.49
9554	16mm	8g	\$51.51
9201	20mm	8g	\$55.38
8961	25mm	8g	\$60.68
9422	30mm	8g	\$65.54



BOX
1000

BUTTON HEAD NEEDLE POINT SCREWS

- Galvanised Grey Class 4
- Also known as stitching screw

CODE	LENGTH	GAUGE	PRICE
9142	12mm	8g	\$55.29
8957	16mm	8g	\$73.52
1336	20mm	8g	\$76.84
1337	25mm	8g	\$93.01

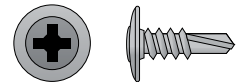


BOX
1000

BUTTON HEAD SELF-DRILL SCREWS

- Fast Drilling
- Zinc yellow

CODE	LENGTH	GAUGE	PRICE
9122	12mm	8g	\$36.00
9366	16mm	8g	\$62.27
9552	20mm	8g	\$67.66
9581	25mm	8g	\$71.29
9180	30mm	8g	\$74.40



BOX
1000

BUTTON HEAD SELF-DRILL SCREWS

- Fast Drilling
- Galvanised Grey Class 4

CODE	LENGTH	GAUGE	PRICE
9491	12mm	8g	\$58.99
1732	16mm	8g	\$79.76
1101	20mm	8g	\$84.72



BOX
1000

BUGLE SCREWS

- Zinc yellow
- Fine thread

CODE	LENGTH	GAUGE	PRICE
9374	25mm	6g	\$19.69
1220	32mm	6g	\$22.91
9473	45mm	6g	\$51.00
9202	50mm	7g	\$53.37

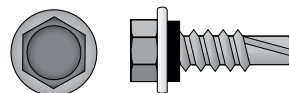


BOX
1000

BUGLE SCREWS

- Zinc yellow
- Coarse thread

CODE	LENGTH	GAUGE	PRICE
9731	25mm	7g	\$26.91
8964	32mm	7g	\$36.09

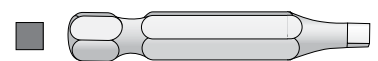


BOX
1000

HEX HEAD SELF-DRILL SCREWS - WITH NEO

- Fast Drilling
- Galvanised Grey Class 4

CODE	LENGTH	GAUGE	PRICE
1354	16mm	10g	\$107.80
9532	25mm	10g	\$160.38



SQUARE DRIVER BITS

- For all our Square Drive screws

CODE	LENGTH	QTY	PRICE
9282	50mm	1	\$3.14
9477	75mm	1	\$4.49
9497	100mm	1	\$5.56
1774	150mm	1	\$7.65

*All prices include GST



BOX
1000

CHIPBOARD SCREWS

- Zinc Yellow

CODE	LENGTH	GAUGE	PRICE
9391	20mm	8g	\$24.84
9350	25mm	8g	\$25.74
9778	28mm	8g	\$32.80
9351	30mm	8g	\$33.65
1231	35mm	8g	\$42.82
9384	40mm	8g	\$47.20
9158	50mm	8g	\$52.30



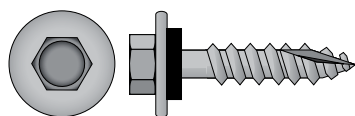
BOX
1000

**Full Range
of Colorbond
rivets**

RIVETS AS4-3 COLOURED

- Coloured rivets
- Aluminum head, steel stem
- Perfect colour match

\$29⁶⁷
INC. GST



BOX
1000

TYPE 17 SCREWS - WITH NEO

- Galvanised Grey Class 4

CODE	LENGTH	GAUGE	PRICE
9504	25mm	12g	\$107.58
9230	50mm	12g	\$112.68



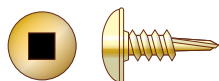
BOX
1000

RIVETS AS4-3

- Roofers' Aluminium Steel
- Most common roofing rivets
- Aluminium head, steel stem

\$25⁸⁵
INC. GST

Code: 9933



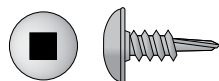
BOX
1000

BUTTON HEAD SQUARE DRIVE SELF-DRILL SCREWS

- Fast Drilling
- Zinc yellow

FREE Driver Bit with every box

CODE	LENGTH	GAUGE	PRICE
9451	12mm	8g	\$45.85
9272	16mm	8g	\$68.73
9309	25mm	8g	\$81.22



BOX
1000

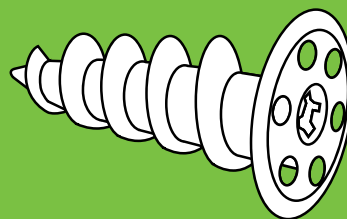
BUTTON HEAD SQUARE DRIVE SELF-DRILL SCREWS

- Fast Drilling
- Galvanised Grey Class 4

FREE Driver Bit with every box

CODE	LENGTH	GAUGE	PRICE
9498	12mm	8g	\$65.24
9514	16mm	8g	\$78.65
9899	30mm	8g	\$98.45

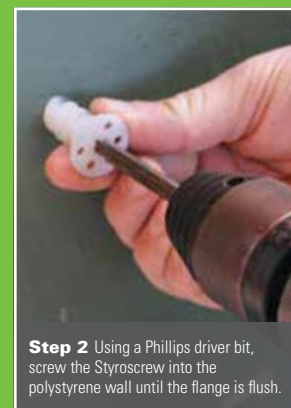
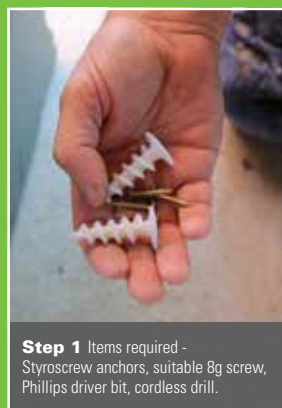
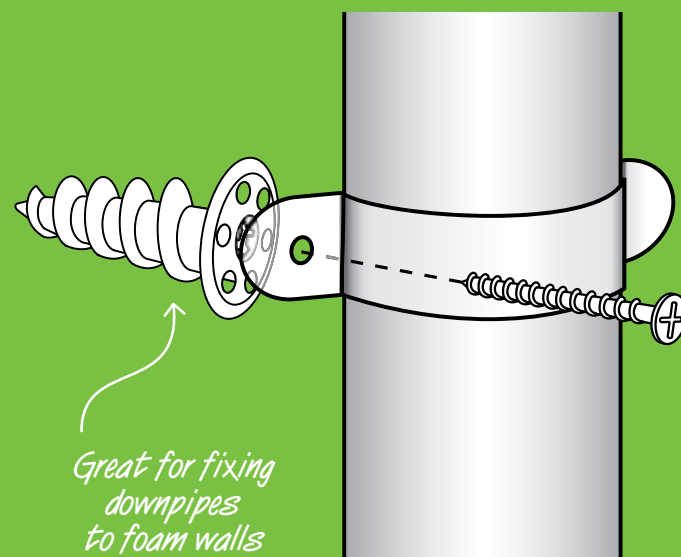
*All prices include GST



**BAG
QTY 50
\$65⁷⁹**
INC. GST
Code: 1223

STYROSCREW

A screw type fastening for polystyrene walls



SCREWS

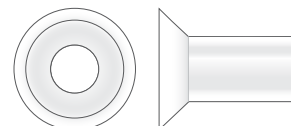
Fixings & Fastenings



PAN SCREW CAP - PUSH IN

- Bag of 100

\$18⁹³
INC. GST
Code:1406



**BOX
100**

PAN SAVERS NYLON

- Protect toilet pans from damage

\$19⁶⁸
INC. GST
Code: 1983

PAN SCREWS WITH A PHILLIPS DRIVE ARE QUICKER AND EASIER TO USE.

One thing that many people don't realise is that the Phillips drive in the head of the pan screw is a size No 3. Using the correct size Phillips drive gives better control of the screw and reduces the chances of slipping and chattering. No 3 Phillips drivers are available in 100mm (Code 9609).

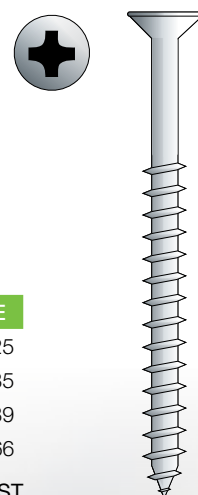
**BOX
100**

PAN SCREWS

- Stainless Steel
- Non-corrosive

CODE	LENGTH	GAUGE	PRICE
9622	25mm	12g	\$44.25
9186	50mm	12g	\$53.35
2505	65mm	12g	\$68.39
1400	75mm	12g	\$88.66

*All prices include GST



*Stainless steel
washer and screw.
Will not rust*

TOGGLE SPRING FOR CISTERNS

- 3/6 Inch x 75mm
- Stainless steel stem and washer - will not rust
- Use 12mm drill bit through plaster
- Zinc plated toggle designed to give maximum holding power in cavity walls

\$1.99each
INC. GST
Code: 3157



UV STABILISED BLACK NYLON TAP-INS WILL NOT FAIL!



- Black Tap-Ins will not fail when exposed to the sun
- Decero coated nails will not rust (exceeds 1000 hour salt spray test)



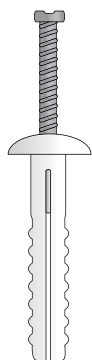
**BOX
500**



NYLON TAP-INS - UV BLACK

- For outdoor use
- Black Nylon UV stabilised will not perish

CODE	LENGTH	QTY	PRICE
9524	5mm x 25mm	500	\$76.53
1187	5mm x 40mm	500	\$107.10



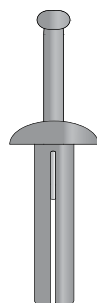
**BOX
100**

NYLON TAP-INS - MUSHROOM HEAD

- 100% nylon, not plastic

CODE	LENGTH	QTY	PRICE
9345	5mm x 25mm	100	\$14.12
9925	6.5mm x 50mm	100	\$19.57

**BOX
100**

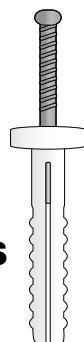


METAL TAP-INS

- MUSHROOM HEAD

- Strong cast alloy

CODE	LENGTH	QTY	PRICE
9387	5mm x 25mm	100	\$32.27
1967	6.5mm x 25mm	100	\$41.00
1968	6.5mm x 32mm	100	\$43.73
1705	6.5mm x 40mm	100	\$46.35

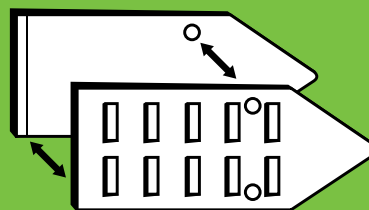


NYLON TAP-INS - ROUND HEAD

- 100% nylon, not plastic

CODE	LENGTH	QTY	PRICE
9978	5mm x 25mm	100	\$13.84
9907	5mm x 25mm	500	\$61.07
9179	5mm x 40mm	100	\$19.78
9973	5mm x 40mm	500	\$84.73
9567	6.5mm x 25mm	100	\$14.36
2262	6.5mm x 40mm	100	\$20.66

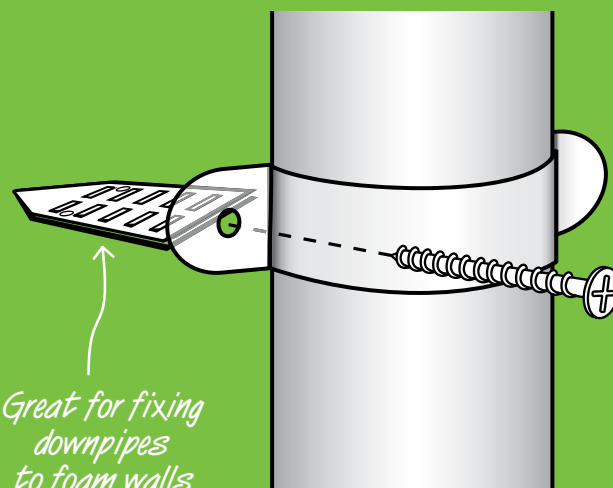
*All prices include GST



**BAG
QTY 50
\$54⁶⁸**
INC. GST
Code: 1222

STYROWEDGE

A wedge type fastening for polystyrene walls



NB. Ensure all penetrations are sealed.



Step 1 Using a sharp blade, cut a 30mm slot, 50mm deep into the wall.



Step 2 Take 2 Styrowedge halves and join the smooth sides together.



Step 3 Insert the Styrowedge into the slot in the wall.



Step 4 Ensure the Styrowedge is flush with the finish of the wall.



Step 5 Place the downpipe and clip in position on the wall. Insert an 8-12 gauge screw into the Styrowedge and tighten into place.



Step 6 Complete for remaining fastenings.

CRAZY CLEARANCE SALE

1/2
PRICE
SPECIAL



SAVE
\$0.79

CALL
US FOR
A BULK
PRICE

WAS \$1.57

NOW \$0.78
INC. GST

HANGNAIL

No nails required

- No more screwing around, just bang and hang!
- Perfect for soft or hard wood
- Can be screwed if needed

CODE: 9861

Patent No. 2005100663

